



**BOSCO**  
BROS., L.L.C. NORCO, LA

**VOLUME II**

**WELDING  
CATALOG**

# Table of Contents

Bonded Abrasives . . . . . 6	Hammers, Sledges, Mallets & Axes . . . 14	Levels. . . . . 24
Resin Bonded Abrasives	Hammers	Radius Markers. . . . . 25
Coated Abrasives . . . . . 6	Hand Tool Organizers & Belts . . . . 14	Squares . . . . . 26
Coated Disc Abrasives	Tool Pouches & Holders	Covering Products . . . . . 26
Coated Flap Disc Abrasives	Pliers & Cutters . . . . . 14	Tarps
Wire Brush Abrasives . . . . . 6	Locking Plier Parts & Accessories	Cutting Tools . . . . . 26
Cup Brushes	Specialty Pliers	Band Saws
End Brushes	Reaming & Deburring Tools . . . . . 16	Chop & Cut-Off Saws
Scratch Brushes	Reamers & Deburring Tools	Finishing Tools . . . . . 27
Wheel Brushes	Retrieving Tools . . . . . 16	Grinders
Tape Products . . . . . 8	Magnetic Retrievers	Clothing Protection . . . . . 27
Pipe Sealant Tapes	Scribers, Pin Vises & Pick Sets. . . . 16	Aprons
Cleaning Products . . . . . 9	Scribers	Coats & Jackets
Cleaners & Degreasers	Wrenches . . . . . 16	Coveralls & Overalls
Leak Detectors & Penetrants. . . . . 9	Adjustable Wrenches	Sleeves & Bibs
Penetrants	HVAC Regulators and Flowmeters . . . 16	Ear Protection . . . . . 30
Surface Irregularity Testing Product Accessories	Cleaning Products . . . . . 17	Earplug Parts & Accessories
Lubricants & Penetrants . . . . . 10	Floor & Carpet Cleaners	Earplugs
Corrosion Inhibitors	Wiping Products. . . . . 17	Eye Protection . . . . . 32
Fluids	Towels & Wipers	Safety Glass Parts & Accessories
Paint & Paint Supplies . . . . . 10	Crayons . . . . . 17	Safety Glasses
Paint Brushes	Marker Holders. . . . . 18	Safety Goggles
Batteries . . . . . 11	Markers . . . . . 18	Fire, Gas & Water Protection . . . . . 35
Extension & Power Cords. . . . . 11	Pencils . . . . . 19	Detectors
Flashlights & Lanterns. . . . . 11	Soapstone Holders. . . . . 20	Foot Protection . . . . . 35
Plugs & Receptacles . . . . . 11	Soapstones . . . . . 20	Footwear Covers
Clamping Products . . . . . 11	Temperature Indicators . . . . . 20	Hand Protection. . . . . 35
Hose Clamps	Carts & Trucks . . . . . 22	Gloves
Strapping Products . . . . . 12	Cylinder Cart Parts & Accessories	Hand Pads & Warmers
Cable Ties	Cylinder Carts & Trucks	Head/Face Protection . . . . . 39
Chisels, Punches & Pins. . . . . 12	Stands & Ramps . . . . . 22	Faceshields & Visors
Pins	Flange Pins & Aligners. . . . . 23	Hard Hat & Cap Parts & Accessories
Clamps & Vises . . . . . 12	Gauges/Gages . . . . . 23	Hard Hats & Caps
Clamps & Spreaders	Pressure Gauges	Welder Caps & Doo Rags
Vises	Specialty Gages	Welding Helmet Parts & Accessories
Crimping & Stripping Tools . . . . . 13	Inspection Mirrors & Magnifiers . . . 24	Welding Helmets
Crimpers & Strippers		Heat Stress Protection. . . . . 51
Files . . . . . 13		Activity Drinks
Half Round Files		Sweat Bands



Respiratory Protection . . . . .	52	Soldering & Brazing . . . . .	63
Cartridge Respirator Parts & Accessories		Soldering/Brazing Kits	
Cartridge Respirators		Soldering/Brazing Torches	
Disposable Respirator Parts & Accessories			
Disposable Respirators		Tig Welding . . . . .	64
Powered Air & Supplied Air System Parts & Accessories		Tig Torch Parts & Accessories	
		Tig Torches & Torch Bodies	
Arc Gouging . . . . .	54	Torch & Weed Burners . . . . .	66
Arc Gouging Electrodes			
Arc Gouging Torches & Cables		Welding & Cutting Accessories . . . . .	66
		Anti-Spatter & Chemicals	
Filler Metals . . . . .	55	Cable Connectors & Lugs	
MIG Welding Wires		Cable Covers	
TIG Welding Wires		Centering Heads	
Welding Stick Electrodes		Cutting & Burning Guides	
Welding/Brazing Alloys & Fluxes		Cylinder & Caps	
		Cylinder Pliers & Wrenches	
Gas Cutting & Welding . . . . .	57	Dry Rod Ovens	
Flash Arrestors		Ground Clamps	
Outfits		Rod Holders	
Quick Connects		Spark Lighter & Flints	
Regulator & Flowmeter Parts		Tip Cleaners	
Regulators & Flowmeters		Water Circulators & Coolants	
Tips & Nozzles		Welding Blankets, Curtains, & Rolls	
Torches & Handles		Welding Cable & Hose Reels	
		Welding Cables & Power Cables	
Manual Welding . . . . .	61	Welding Clamps, Spreaders & Holders	
Electrode Holders		Welding Hose & Compressed Gas Fittings	
		Welding Hoses	
Mig Welding . . . . .	61	Welding Umbrellas	
Mig Gun Parts & Accessories			
Mig Guns		Welding & Cutting Machines . . . . .	83
		Plasma Cutter Parts	
Plasma Cutting . . . . .	62		
Plasma Parts			

**Honeywell**





# GATORLYTE® RAPID REHYDRATION

Gatorlyte is the ideal choice for active lifestyles. Developed by Gatorade's sports scientists, it delivers rapid rehydration with a specialized blend of five electrolytes, lower sugar than the leading sports drinks, and no artificial sweeteners or flavors.

**SCIENTIFICALLY FORMULATED FOR RAPID REHYDRATION**



**SODIUM** 490 MG  
**POTASSIUM** 350 MG  
**CHLORIDE** 1,040 MG  
**MAGNESIUM** 105 MG  
**CALCIUM** 120 MG



**LOWER SUGAR**

50% lower sugar than leading sports drink, gatorlyte contains 12g total sugars per 20 fl oz serving. Not including 4g of naturally occurring sugar from electrolyte salts.

**NO ARTIFICIAL SWEETENERS OR FLAVORS**

- 05282 Gatorlyte Powder sticks 20oz Orange 12/ct
- 05284 Gatorlyte Powder sticks 20oz Watermelon 8/6ct
- 05281 Gatorlyte Powder sticks 20oz Cherry Lime 8/ct
- 04790 Gatorlyte 20oz ready to drink Orange 12/ct
- 04791 Gatorlyte 20oz ready to drink Strawberry Kiwi 12/ct
- 05062 Gatorlyte 20oz ready to drink Watermelon 12/ct
- 05286 Gatorlyte Zero 20oz ready to drink Lemon Lime 12/ct
- 05285 Gatorlyte Zero 20oz ready to drink Strawberry Kiwi 12/ct







# THE V-Gard C1™ HARD HAT

---

**A higher degree of heat stress protection.** The patent-pending ReflectIR™ Thermal Barrier works to block the energy of the sun, keeping the inside of the hard hat up to 20°F (11°C) cooler, reducing the risk of heat stress. Find where to buy at [www.msasafety.com/vgardc1](http://www.msasafety.com/vgardc1).

**MSA**  
The Safety Company

## BONDED ABRASIVES

### Resin Bonded Abrasives

**metabo**  
PROFESSIONAL POWER TOOL SOLUTIONS

### Original Slicer® Cutting Wheels

**Features:**

- Extremely fast rate of cut.
- Designed with two full layers of high strength fiberglass for safety.
- Consistent performance time after time.
- Burr-free, cool cutting.

**Thickness:** 0.040 in

**Arbor Size:** 7/8 in

**Grit:** 60

**Speed:** 10200 RPM



SKU	Tool Shape	Dia.
469-655339000	Type 1	6 in

## COATED ABRASIVES

### Coated Disc Abrasives

**3M**

### 3M™ Cubitron™ II Fibre Disc 982C

**Features:**

- Sturdy fibre discs employ precision ceramic grain and last up to twice as long.
- Discs run cool and wear evenly.
- Can be run wet or dry.

**Grit:** 36

**Body Material:** Fiber

**Abrasive Material:** Precision Shaped Ceramic



SKU	Dia.	Arbor Diam.	Speed	Mounting
405-051141-27425	4-1/2 in	5/8 in	13300 rpm	TN
405-051141-27400	4-1/2 in	7/8 in	13300 rpm	TN
405-051141-27401	5 in	7/8 in	12000 rpm	Center Hole
405-051141-27405	7 in	5/8 in	8600 rpm	TN
405-051141-27402	7 in	7/8 in	8600 rpm	Center Hole



### Resin Fiber Discs

**Features:**

- Ideal for blending, finishing and surface preparation.
- Rigid yet flexible backing for the most demanding applications.
- Electrostatically distributed grains for the most consistent grain application.

**Abrasive Material:** Aluminum Oxide

**Body Material:** Fiber

**Mounting:** Arbor Hole



SKU	Dia.	Arbor Diam.	Grit	Speed
102-7A24	7 in	7/8 in	24	8500 RPM
102-45A36	4-1/2 in	7/8 in	36	11000 RPM

## Coated Flap Disc Abrasives



### Tiger® Big Cat® High Density Flap Discs

**Features:**

- A thicker disc with larger flaps which conforms to curved and irregular surfaces while producing a consistent finish.
- 30 to 40 percent longer life than standard flap discs.
- Ideal for a working angle less than 15 degrees.

**Speed:** 12000 rpm

**Abrasive Material:** Zirconia Alumina

**Tool Shape:** Type 27



SKU	Dia.	Grit	Arbor Diameter
804-50803	4-1/2 in	40	7/8 in
804-50808	4-1/2 in	40	5/8 in - 11

## WIRE BRUSH ABRASIVES

### Cup Brushes



### Knot Cup Brushes

**Features:**

- Provides flexible brushing action and cost-effective performance in general purpose cleaning applications.
- Quickly completes rough surface-prep and debris-removal tasks.
- Features a threaded nut, making for smooth, efficient operation on angle grinders.

**Wire Material:** Carbon Steel



SKU	Dia.	Wire Size	Trim Length	Arbor Size
102-3KC14	2-3/4 in	0.014 in	7/8 in	5/8 in to 11
102-3KC58	3 in	0.02 in	1 in	5/8 in - 11
102-4KC58	4 in	0.02 in	1-1/4 in	5/8 in - 11
102-R3KC58	3 in	0.012 in	7/8 in	5/8 in - 11



## End Brushes



### Crimped Wire Solid End Brushes

**Features:**

- Light-duty cleaning in corners and hard to reach areas.
- Solid End Construction.
- Very flexible brushing action.

**Trim Length:** 1 in

**Speed:** 22,000 RPM

**Stem Diam:** 1/4 in



SKU	Brush Diam	Wire Size
804-10021	1 in	0.006 in

## Scratch Brushes



### Hand Scratch Brushes

**Features:**

- Heavy-duty industrial brushes.
- Wire fill and length is unsurpassed.
- Durable wood handle.

**Block Material:** Wood

SKU	Handle Type	Bristle Material	Bristle Rows
102-387	Shoe	Carbon Steel	4 X 16
102-387SS	Shoe	Stainless Steel	4 X 16
102-388	Curved	Carbon Steel	3 X 19
102-388SS	Curved	Stainless Steel	3 X 19



### Inspection Brushes

**Features:**

- Ideal for cleaning and prepping surfaces.
- Small handle.
- Great for small cleaning jobs.

**Bristle Material:** Stainless Steel

**Block Material:** Wood

**Block Width:** 1/2 in

**Brush Length:** 7-1/2 in

**Trim Length:** 1/2 in

**Overall Length:** 7-1/2 in

**Bristle Rows:** 3 X 7

SKU	Handle Type
102-BW-190	Bent



### Utility Brushes

**Features:**

- Abrasive metal brush removes corrosion, oxidation.
- Narrow bristle configuration is ideal for cleaning tight spaces.
- Rust-resistant.

**Bristle Material:** Stainless Steel

**Block Material:** Wood

**Block Width:** 1/2 in

**Bristle Rows:** 3 X 7

SKU	Handle Type
102-15SS	Curved
102-30SS	Curved



### Small Hand Scratch Brushes

**Features:**

- For general cleaning in the plating, metal finishing, aircraft and missile industries.
- Also used with inert arc aluminum welding.

**Bristle Material:** Stainless Steel

**Block Material:** Wood

**Block Width:** 1/2 in

**Trim Length:** 1/2 in

**Overall Length:** 7-1/2 in

**Bristle Rows:** 3 X 7

SKU	Handle Type
804-44167	Curved

## Wheel Brushes



### Knot Wheel Brushes

**Features:**

- Heavy-duty brushing action with some flexibility.
- Ideal for demanding cleaning applications on somewhat irregular surfaces.
- Use for general-purpose applications.

**Dia.:** 4 in

**Arbor Diam:** 5/8 in - 1 1/2 in

**No. of Knots:** 20

**Arbor Thread:** 5/8 in - 1 1/2 in

SKU	Bristle Material	Bristle Diam	Face Width
102-4K58	Carbon Steel	0.014 in	5/8 in
102-R4K58	Carbon Steel	0.014 in	4 in
102-4K58S	Stainless Steel	0.014 in	5/8 in



## Stringer Bead Wheel Brushes

### Features:

- Very narrow face design primarily for weld cleaning and to access hard-to-reach areas.

**Arbor Diam:** 5/8 in - 11

**Arbor Thread:** 5/8 in - 11



SKU	Bristle Material	Bristle Diam	Dia.	No. of Knots	Face Width
102-4S58	Carbon Steel	0.02 in	4 in	30	4 in
102-R4S58	Carbon Steel	0.02 in	4 in	30	4 in
102-6S58	Carbon Steel	0.02 in	6 in	48	6 in
102-7S58	Carbon Steel	0.02 in	7 in	56	3/6 in
102-4S58S	Stainless Steel	0.02 in	4 in	30	1/4 in
102-R4S58S	Stainless Steel	0.02 in	4 in	30	4 in
102-6S58S	Stainless Steel	0.02 in	6 in	48	6 in



## Roughneck® Max Stringer Bead Wheels

### Features:

- Delivers unmatched weld cleaning performance by maximizing life, efficiency, and consistency.
- Improved feel and comfort during use makes brush operation effortless.
- Stronger, sharper wire delivers consistency and performance you can count on.
- Recommended for cleaning root pass welds, surface prep, and other cleaning applications.

**Dia.:** 4 in

**No. of Knots:** 32

**Face Width:** 3/16 in



SKU	Bristle Material	Bristle Diam	Arbor Diam
804-13131	Steel	0.020 in	5/8 in-11 UNC
804-13138	Stainless Steel	0.020 in	5/8 in to 11 UNC

## Roughneck® Stringer Bead Wheels

### Features:

- Narrow face brush is suitable for cleaning root and hot passes.
- Effectively reaches into corners.
- Constructed from premium quality wire.

**Arbor Diam:** 5/8 in

**Face Width:** 3/16 in

**Arbor Thread:** 11 UNC



SKU	Bristle Material	Bristle Diam	Dia.	No. of Knots
804-08756	Steel	0.020 in	5 in	38
804-09000	Steel	0.020 in	7 in	56
804-09400	Steel	0.020 in	6 in	56

## TAPE PRODUCTS

### Pipe Sealant Tapes



## Gas Line PTFE Thread Sealant Tapes

### Features:

- Heavy-duty, full-density tape that permits quick, clean and economical sealing of threaded pipe connections.
- Full density makes it ideal for gas lines and other applications requiring the best possible seal.
- Made of 99.5% virgin PTFE with a pigment additive for coloring.

**Thickness:** 0.0035 in

**Color:** Yellow



SKU	Length	Width
102-3/4X520PTFE-YEL	520 in	3/4 in

## White PTFE Thread Sealant Tapes

### Features:

- Tapes can be used in a wide variety of applications, from general purpose service such as water and air, to difficult service such as acids and pure oxygen.
- Easy installation, several wraps around the male threads and you're done.
- Made of 100% PTFE; compatible with almost any process fluid (except molten alkalis and elemental fluorine).
- Unlimited shelf life, no age deterioration, non-hardening.

**Thickness:** 0.0035 in



SKU	Length	Width
102-1/2X520PTFE	520 in	1/2 in
102-3/4X520PTFE	520 in	3/4 in



## CLEANING PRODUCTS

### Cleaners & Degreasers



### Chlor-Free™ Degreasers

#### Features:

- Non-chlorinated degreasing solvent that removes oil, grease, and other contaminants.
- Perfect for applications requiring quick turnaround and where a low flashpoint solvent can be used.

**Chemical Compound:** Non-Chlorinated; Blend of Organic Solvents



SKU	Capacity Vol.
125-03185	20 oz

## LEAK DETECTORS & PENETRANTS

### Penetrants



### PB™ Penetrating Catalysts

#### Features:

- Great for loosening rusted or frozen screws and bolts.
- Effective rust inhibitor.
- Non-evaporating lubricant.
- Penetrates into hard-to-reach areas.
- Suitable for brake, exhaust and suspension system jobs.



SKU	Capacity Vol.
108-16-PB-DS	11 oz



### Spotcheck® SKC-S

#### Features:

- Non-chlorinated cleaner/remover.
- Used as a pre-cleaner, a post cleaner and a penetrant remover.
- Recommended general purpose.



SKU	Capacity Vol.
387-01-5750-78	16 oz



### Spotcheck® SKL-SP2 Solvent Removable Penetrant

#### Features:

- Choose a dependable penetrant, like this solvent removable red color contrast penetrant.
- Offers maximum reliability in locating surface-open flaws and discontinuities.
- Has been successfully used on non-porous ceramics and other similar materials.



SKU	Capacity Vol.
387-01-5155-78	16 oz

### Spotcheck® SKL-WP2 Water Washable Penetrants

#### Features:

- Speed your work process, with a convenient low odor, water washable penetrant that exhibits outstanding penetrating characteristics and discontinuity identification.
- Water wash removable.
- Red visible dye.
- Eliminates the need for solvent removers or emulsifiers in the elimination of excess surface penetrant.



SKU	Capacity Vol.
387-01-5190-78	16 oz

## Surface Irregularity Testing Product Accessories



### Spotcheck® SKD-S2 Solvent Developers

#### Features:

- Non-halogenated, ready-to-use solvent developer.
- Suspends white developing particles in a fast drying solvent.
- Produces opaque white coating that provides excellent contrasting background for penetrant indications.



SKU	Capacity Vol.
387-01-5352-78	11.6 oz

LUBRICANTS & PENETRANTS

Corrosion Inhibitors



Brite® Zinc® Galvanizing Compounds

Features:

- Repair damaged or welded galvanizing.
- Weld-thru, fast dry, meets ASTM A780.
- Brite silver, matches hot-dip.

Chemical Compound: Zinc Rich

Flash Point: -4° F



SKU	Capacity Vol.
388-B-100	16 oz



Bright Zinc Galvanizing Primers

Features:

- Reduced M.I.G.
- weld spattering.
- Prevents rust and corrosion.
- Protects welded surfaces.
- Repairs Hot Dip Galvanizing with brighter finish.
- Will not blister or burn away.



SKU	Capacity Vol.
905-RW109B-12	12.75 oz

Cold Zinc Galvanizing Primers

Features:

- Zinc rich rust preventative finish for industrial applications.
- For use on galvanized and non-galvanized surfaces.
- No topcoat needed.

Temp. Range: 50° F - 90° F



SKU	Capacity Vol.
905-SPRAY-GALV-14	14 oz

Fluids



Band-Ade® Semi-Synthetic Sawing Fluids

Features:

- Put a Band-Ade® on your machinery, with a semi-synthetic sawing fluid that reduces machine wear and improves band saw blade tool life.
- Water-soluble formulation helps to reduce frictional heat and improves cutting performance.
- Faster cutting and reduced machine wear increases efficiency.
- Products are safe for the operator to use with no harmful chemicals, such as chlorine and sulfur.
- Surfaces can be welded or painted over.

Container Size: 5 gal



SKU	Container Size
433-68003	5 gal



Tapmatic® Edge Lube Cutting Lubricants

Features:

- White solid waxy bar.
- Biodegradable.
- Excellent for belt, wheel, or disc grinding, and sawing applications.
- Eliminates heat build-up and belt loading.
- Does not contain any hazardous chemicals.
- Extends grinding wheel life.
- Low toxicity.



SKU	Container Size
428-43200	13 oz

PAINT & PAINT SUPPLIES

Paint Brushes



Acid Brushes

Features:

- Lightweight and disposable brush.
- Convenient for cleaning electrical contact points or debris in hard-to-reach spaces.
- Features tin shaft with horsehair bristles.

Trim Length: 3/4 in

Bristle Material: Black Horsehair

Handle Material: Tin Ferrule

SKU	Brush Width	Thickness
102-BW-180	3/8 in	1/4 in



## BATTERIES

**DURACELL®**

### Procell® Batteries



**Features:**

- AA, AAA, C and D batteries are guaranteed for 7 years in storage, 9V batteries are guaranteed for 5 years in storage.
- Recommended for scheduled battery replacement programs.
- Economically packaged in bulk and individually date-coded for effective inventory management.

**Voltage:** 1.5 V

**Quantity:** 24 per pack

SKU	Battery Type	Batt. Size
243-PC1500BKD	Non-Rechargeable Dry Cell Alkaline	AA
243-PC2400BKD	Non-Rechargeable Dry Cell Alkaline	AAA

## EXTENSION & POWER CORDS



### 8/3 STW Welder Extension Cords

**Features:**

- Features durable heavy-duty STW jacket.
- Lighted receptacle indicates when the power is on.
- Blue color for easy identification.

**No. of Outlets:** 1

**Conductor Size:** 8/3 AWG

**Amps:** 40 A

SKU	Length	Voltage
172-019178806	25 ft	250 V

## FLASHLIGHTS & LANTERNS



### Stylus Pro® LED Pen Lights



**Features:**

- Sleek design fits in your pocket.
- Use for close inspection and to illuminate tight spaces.
- IPX4 rated for water resistant operation, all openings o-ring sealed.
- One meter impact resistance tested.

**Batt. Type:** Alkaline

**Beam Concentration (MBCP):** 950 cd

**Lumens:** 100

**Modes:** On/Off

**Run Time:** Up to 8 h

**Lamp Life:** 30,000 h

**Includes:** Batteries; Nylon Holster; Removable Pocket Clip

SKU	No. of Batteries	Batt. Size
683-66118	2	AAA

## PLUGS & RECEPTACLES



Powering Business Worldwide



### Plugs and Receptacles

**Features:**

- Connecting and protecting electrical loads is crucial to reliable, efficient and safe power management with a facility.
- Choose from a variety of plugs and receptacles.

**No. of Contacts:** 3

SKU	NEMA/IEC Configuration	Amps	Length	Height	Width
309-1252	6-50R	50 A	2.25 in	9 in	5 in
309-S21-SP	14-30P; 14-50P	30 A to 50 A	2.63 in	8.5 in	6 in
309-S42-SP	6-30P; 6-50P	30 A to 50 A	1.38 in	3.37 in	2.87 in
309-S80-SP	10-30P; 10-50P	30 A to 50 A	2.5 in	10 in	6 in

## CLAMPING PRODUCTS

### Hose Clamps



### 2-Ear Zinc-Plated Hose Clamps



**Features:**

- Compact one-piece clamp for robust, secure connections.
- Fast and simple installation, visible deformation provides evidence of proper closure.
- Deburred edges reduce risk of damage to parts being clamped.
- Provides a degree of elasticity to accommodate changes in size of the parts being joined.

**Material:** Steel, Material No. 1.0338 / SAE 1008/1010; Zinc-Plated

SKU	Clamp Diam	Hose O.D.	Width	Thickness
320-10100019	0.591 in	- 9/16 in	0.295 in	0.0393 in
320-10100024	0.709 in	- 5/8 in	0.315 in	0.0472 in

## STRAPPING PRODUCTS

## Cable Ties



## General Purpose Cable Ties

## Features:

- Nylon 6/6 features light weight, high strength and a wide temperature range.
- Even at higher than recommended temperatures or exposure to flame, nylon does not give off toxic or irritating by-products.

**Thickness:** 0.054 in

**Tensile Strength:** 50 lb

**Bundle Diam:** 3 in

**Material:** Nylon 6/6

SKU	Length	Width
102-1150N	11.1 in	0.18 in

## UV Stabilized Cable Ties

## Features:

- General purpose use.
- Nylon 6/6 features light weight, high strength and a wide temperature range.
- Contains increased resistance to UV light (does not totally eliminate the destructive effects of the light).

**Material:** Nylon 6/6

SKU	Length	Width	Thickness	Tensile Strength	Bundle Diam
102-1150UVB	11.1 in	0.18 in	0.054 in	50 lb	3 in
102-1150UVB-B	11.1 in	0.18 in	0.054 in	50 lb	3 in
102-12120UVB	12 in	0.298 in	0.069 in	120 lb	3 in
102-1450UVB	14.6 in	0.18 in	0.054 in	50 lb	4 in
102-15120UVB	15 in	0.298 in	0.069 in	120 lb	4 in
102-750UVB	7.6 in	0.18 in	0.054 in	50 lb	2 in
102-750UVB-B	7.6 in	0.18 in	0.054 in	50 lb	2 in

## CHISELS, PUNCHES &amp; PINS

## Pins



## Broad-Head Bull Pins

## Features:

- Drop-forged, heat-treated.
- Head design also reduces chance of pin slipping from the hand when aligning holes.
- Angled head and smooth blending of radii increase strength and reduce the danger of chipping.

**Dia.:** 1-1/4 in

**Material:** Forged Steel

**Finish:** Black Oxide

SKU	Point Diam	Overall Length
409-3255	5/16 in	13 in

## CLAMPS &amp; VISES

## Clamps &amp; Spreaders



## Drop Forged C-Clamps

## Features:

- Extra throat depth.
- Non-slip clamping on all shapes.
- Steel spindles are copper plated for spatter protection.
- Swivel pads adjust freely to bear evenly on clamped part.
- Individually boxed for easy storage and protection.

**Spindle Dia:** 3/4 in

**Body Material:** Drop Forged Steel

**Handle Type:** Sliding Pin

**Handle Material:** Steel

SKU	Opening Size	Overall Length	Throat Depth	Pressure
102-406C	6-1/16 in	6 in	4-1/8 in	6,900 lb
102-408C	8-1/4 in	8 in	5 in	6,600 lb



## Locking C-Clamps with Swivel Pads

## Features:

- Wide-opening jaws provide greater versatility.
- Swivel pads hold tapered work, awkward fabricating jobs, and delicate projects.
- Turn screw to adjust pressure and fit.
- Constructed of high-grade heat-treated alloy steel.
- Guarded release trigger quickly unlocks and protects from accidental release.

SKU	Overall Length	Throat Depth
586-11SP	11 in	2-5/8 in
586-18SP	18 in	9-1/2 in
586-6SP	6 in	1-1/2 in

## The Original™ Locking C-Clamps with Regular Tips



## Features:

- Wide-opening jaws provide greater versatility in clamping a variety of shapes.
- Turn screw to adjust pressure and fit.
- Constructed of high-grade heat-treated alloy steel.
- Classic trigger release designed to provide maximum locking force.

**Pressure:** Adjustable Turn Screw

**Body Material:** Heat-Treated Alloy Steel

**Handle Type:** Vise-Grip Release

SKU	Opening Size	Overall Length	Throat Depth
586-11R	4 in	11 in	2-5/8 in
586-18R	8 in	18 in	9-1/2 in
586-6R	2-1/8 in	6 in	1-1/2 in





## Magnetic Ground Clamps

### Features:

- On/Off magnetic clamp enables welder to quickly set up, weld and move on to the next job.
- Instant ground on flat or pipe.
- Provides strong grip on flat or round surfaces.



SKU	Load Cap.	Height	Length	Width
474-8100746	90 lb	2-3/10 in	2.9 in	1.9 in
474-8100747	200 lb	2-3/5 in	4.2 in	3.1 in

## Vises



## TRISTAND® Portable Chain Vises

### Features:

- Optimized base for more working area.
- Benders are located at the rear of the base and three tool hangers are provided.
- Integrated ground lug provides a conductive surface to connect the weld ground.
- Leg chain retains legs even when subjected to rugged use during operation and transport.
- Rugged tool tray offers prolonged stability before requiring a leg adjustment.



SKU	Pipe Cap.	Material
632-36273	1/8 in - 6 in	Ductile Iron Work Surface; Hardened Steel Jaws and Tubular Legs

## CRIMPING & STRIPPING TOOLS

### Crimpers & Strippers



## Hand-Held Ferrule Crimp Tools

### Features:

- Crimp with hammer strike or vise pressure.
- Performs precision crimping tasks quickly and easily.
- Convenient multi-hole design.

**Length:** 1/2 in

**Handle Material:** Steel

**Handle Color:** Black

**Wt.:** 1.32 lb



SKU	Capacities
312-C-5	3/16 in; 1/4 in

## FILES

### Half Round Files



## Bastard Files

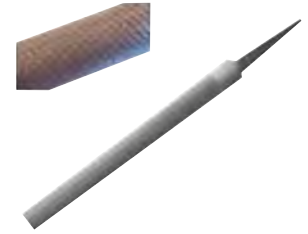
### Features:

- Manufactured from the finest materials and properly heat treated to produce outstanding quality.
- Versatile applications for concave, convex or flush surfaces.
- Double-cut flat side.
- Handy for filing down sharp edges.

**Tooth Pattern:** Flat - Double Cut

**Tool Shape:** Taper to Point

**Style:** American



SKU	Length
100-14HRBF	14 in



## Half-Round Files

### Features:

- Used on concave, convex and flat surfaces.
- Rounded on one side, flat on opposite.
- Backs of all half-round bastard files are double-cut.
- Backs of all 4 in and 6 in files are single-cut.
- Backs of all half-round second-cut files are longer than 6 in are double-cut.

**Tool Shape:** Straight

SKU	Cut Type	Length	Tooth Pattern	Style
183-05094N	Bastard Cut	12 in	Curved - Double Cut; Flat - Double Cut	American Pattern
183-05194N	Double-Cut on Flat Side; Bastard Cut	14 in	Curved - Double Cut; Flat - Double Cut	American Pattern
183-05190N	Double-Cut Bastard	14 in	Curved - Single Cut; Flat - Single Cut	Pipeliners File; American Pattern

HAMMERS, SLEDGES, MALLETS & AXES

Hammers



Chipping Hammers

Features:

- Hammer heads are hardened to precisely controlled temperatures for durability and strength.
- Wide-blade design removes slag faster and adds to the life of the tool.
- Drop forged, heat-treated, hardened head withstands more grinds.
- Well balanced handle grip for comfort and ease-of-use.

Handle Material: Steel

Head Material: Forged Steel



SKU	Overall Length	Handle Type	Head Length
900-CH-200	11 in	Spring	6 in
900-000H	280 mm	Spring	6.02 in



Welding Chipping Hammers

Features:

- Molded on Shock Reduction Grip™ reduces shock up to 50%.
- Forged in one piece.
- Ergonomically correct.
- Made in the USA.

Handle Material: Steel

Head Material: Steel

Head Length: 7-1/2 in



SKU	Overall Length	Handle Type
268-E3-WC	11 in	Straight



Hickory Wood Handle Chipping Hammers

Features:

- Hickory handles are unexcelled for toughness and resilience.
- Drop forged, heat-treated heads attached to handle with steel and wood wedges.

Handle Material: Hickory

Head Material: Steel



SKU	Overall Length	Handle Type
380-09100	11.5 in	Straight

HAND TOOL ORGANIZERS & BELTS

Tool Pouches & Holders



Leather Holsters

Features:

- Genuine leather holster, keeps pliers safe and handy.
- Protects pliers tips.
- Prevents wear and tear.



SKU	Width	Height
900-BW-50-HOLSTER	3-1/2 in	10-1/2 in

PLIERS & CUTTERS

Locking Plier Parts & Accessories



Replacement Parts

Features:

- Genuine VISE-GRIP® replacement parts include springs, adjusting screws, chains, and pads.
- Made to the highest standards.



SKU	For Model	Type
586-40EXT	20R® Locking Pliers	18 in/455 mm Extension Chain

Locking Chain Clamps

Features:

- Chain holds and locks around any shape or size.
- Turn screw to adjust pressure and fit.
- Constructed of high-grade heat-treated alloy steel.
- Guarded release trigger quickly unlocks and protects from accidental release.

Material: High-Grade Heat Treated Alloy Steel

Chain Length: 18 in



SKU	Jaw Opening	Overall Length
586-20R	18 in	9 in





## Locking Sheet Metal Clamps

### Features:

- Locks to work, eliminates hand gripping.
- Makes bending, forming and crimping jobs easier.

**Throat Depth:** 1-3/4 in

**Material:** Alloy Steel

SKU	Jaw Opening	Overall Length
586-23	3-1/8 in	8 in



## Locking Welding Clamps

### Features:

- U-shaped jaws provide enhanced visibility and more working space.
- Holds work in proper alignment.
- Turn screw to adjust pressure and fit.
- Constructed of high-grade heat-treated alloy steel.
- Guarded release trigger quickly unlocks and protects from accidental release.

**Throat Depth:** 1-5/8 in

**Material:** High-Grade Heat-Treated Alloy Steel

SKU	Jaw Opening	Overall Length
586-9R	2-3/4 in	9 in



## WISE-GRIP® Large Jaw Locking Pliers

### Features:

- Heavy-duty jaw grips around work of all shapes.
- Ideal for plumbers, mechanics, welders, and others working with large objects.
- Ideal for tightening, clamping, twisting and turning.
- Turn screw to adjust pressure and fit, stays adjusted for repetitive use.
- Constructed of high-grade heat-treated alloy steel for maximum toughness and durability.
- Guarded release trigger quickly unlocks and protects from accidental release.
- Hardened teeth are designed to grip from any angle.

**Throat Depth:** 1-7/8 in

**Material:** Alloy Steel

SKU	Jaw Opening	Overall Length
586-12LC-3	3-1/8 in	12 in



## WISE-GRIP® Straight Jaw Locking Pliers

### Features:

- Straight jaws provide maximum contact on flat, square, or hex work.
- Ideal for tightening, clamping, twisting and turning.

**Throat Depth:** 1-3/4 in

**Material:** Alloy Steel

SKU	Jaw Opening	Overall Length
586-10R-3	1-5/8 in	10 in



## WISE-GRIP® The Original™ Curved Jaw Locking Pliers with Wire Cutters

### Features:

- Curved jaw puts tremendous pressure on four points of any style nut or bolt head.
- Includes convenient wire cutter.
- Constructed of high-grade heat-treated alloy steel for maximum toughness and durability.
- Guarded release trigger quickly unlocks and protects from accidental release.
- Turn screw to adjust pressure and fit, stays adjusted for repetitive use.
- Hardened teeth are designed to grip from any angle.
- Hex key adjusting screw offers controlled release and draws materials tightly together.

**Throat Depth:** 2-5/8 in

**Material:** Alloy Steel

SKU	Jaw Opening	Overall Length
586-10WR-3	1-7/8 in	10 in

## Specialty Pliers



## MIG Welding Pliers

### Features:

- Strong, sharp welding pliers is a must tool for mig welding operations.
- Multipurpose tool with 8 functions resulting in more efficient time and production.
- Durable carbon steel construction paired with an easy to use spring operated handle.

**Jaw Shape:** Double-Edged

**Material:** Carbon Steel



SKU	Overall Length	Wire Diam
900-YS-50	21 cm	0.8 mm - 1.5 mm

**IRWIN**  
VISE GRIP®

## MIG Welding Pliers

### Features:

- Specially-designed nose for efficient removal of welding spatter.
- Induction-hardened cutting edge stays sharp longer.
- Multiple jaws for drawing out wire and removing or installing contact tips and nozzles.
- Spring-loaded for ease of use.
- Dipped grips for superior comfort.
- Hammer designed for light welding gun maintenance.

**Jaw Shape:** Welder's

**Material:** Metal; Blade Steel



SKU	Overall Length
586-1873303	8 in

## REAMING & DEBURRING TOOLS

### Reamers & Deburring Tools



## Swivel Head Deburring Tools

### Features:

- Swivel head provides easy deburring of round and uneven surfaces.
- Use tool to remove leftover burrs from cut pipe, tubing, conduit, and PVC tubing.
- Easily push down spring-loaded locking collar, pivot blade allows for easy and quick burr removal.



SKU	Overall Length
318-482	5-1/8 in

## RETRIEVING TOOLS

### Magnetic Retrievers

**ULLMAN**®

## Telescoping Magnetic Pick-Up Tools

### Features:

- Handy pocket clip for secure carry and convenient access.
- Magnetic end with POWERCAP® styles available.

**Dia.:** 1/2 in

**Width:** 1/2 in

**Height:** 1/2 in

**Material:** Neodymium-Iron-Boron High Flux Magnet; Stainless Steel Handle



SKU	Load Cap.	Length
758-HT-2	5 lb	7-1/4 in - 33-3/4 in
758-HT-3	10 lb	8-1/4 in - 30-1/4 in

## SCRIBERS, PIN VISES & PICK SETS

### Scribers

**ULLMAN**®



## Pocket Scribers

### Features:

- Magnetic end retrieves small metal objects in hard to reach areas..
- All-in-one "Push-Click" SAFETY COVER on Tungsten Carbide.
- Sharp tungsten carbide tip cuts into hard surfaces, leaves clear mark on metal, glass, plastics and tools.

**End Type:** Straight Point

**Tip Material:** Tungsten Carbide

SKU	Length
758-1830	5-7/16 in

## WRENCHES

### Adjustable Wrenches



## Adjustable Wrenches

### Features:

- Hardened and tempered.
- Precision machined jaws and knurled adjusting worm.
- Plated to resist rust.

**Head Angle:** 15°

**Head Width:** Varies

**Head Thickness:** Tapered

**Handle Type:** I-Beam

**Material:** Drop-Forged Alloy Steel

SKU	Opening Size	Overall Length
103-01-012	1-1/2 in	12 in

## HVAC REGULATORS AND FLOWMETERS



## VN Series HVAC Nitrogen-Purging Regulators/Flowmeters



### Features:

- Hybrid design—regulator and flowmeter all in one.
- Easy-to-read nitrogen cylinder content gauge with preset flow rates.
- Heavy-duty brass body designed for rugged field use.
- No adaptors needed.

**Connection Type:** CGA-580

**Outlet Size:** 1/4 in

**Outlet Type:** Male SAE Flare

SKU	Style	Operating Pressure
312-VN-650	Preset to Purge/Braze/Test Click Style	- 650 psi Test; 3000 psi
312-VN-500	Preset to Purge/Braze/Test Click Style	- 500 psi Test; 3000 psi



CLEANING PRODUCTS

Floor & Carpet Cleaners



Oil-Based Non-Sanded Floor Sweeping Compounds



Features:

- Non-abrasive sweeping compound safe to use on any floor.
- Perfect for collecting dirt and dust on all types of wood, tile, terrazzo, and finished concrete floors without scratching.

SKU	Capacity
103-FLOOR-SWEEP	50 lb

WIPING PRODUCTS

Towels & Wipers



Multi-Purpose Scrubbing Wipes



Features:

- Dual textured wipe, a textured side and a smooth side.
- Extra large, durable wipes, 10 inch x 12 inch.
- Multi-purpose to use on hands, tools, and surfaces.
- No water needed.
- Contains no harsh chemicals.
- Leaves hands feeling clean and refreshed.

Quantity: 72 Sheets Per Roll

Packing Type: Canister

SKU	W x L per sheet
103-360726	10 in x 12 in

CRAYONS



B-L Paintstik® Solid Paint Markers

Features:

- Marks bleed through solvent-based or oil-based primers or paints.
- Used for inspection, coding, layout, or assembly operations.
- Durable weather-resistant and UV-resistant marks.
- To prevent bleeding through the finished coat of paint, seal the marked areas with water-based epoxy paint.

Length: 4.25 in

Temp. Range: -50° F - 150° F

Flash Point: 250° F

SKU	Color	Dia.
434-80725	Blue	11/16 in



Paintstik® Original B® Solid Paint Markers

Features:

- Solid paint marker combines the durability of paint in the convenience of a crayon.
- Superior marking performance on oily, icy, wet, dry, or cold surfaces.
- Weather-resistant and UV-resistant for long-lasting marks.
- Works on rough, rusty, or dirty surfaces.

Length: 4-3/4 in

Temp. Range: -50° F - 150° F

Flash Point: 204° C

SKU	Color	Dia.
434-80220	White	11/16 in
434-80221	Yellow	11/16 in



Quik Stik® All Purpose Solid Paint Markers

Features:

- Fast-drying, permanent, vibrant paint marks dry in 5 to 7 minutes.
- Marks on virtually any surface-wet, smooth, rough, or hot.
- New Easy Grip Airtight Cap for convenient pocket storage, self-storing cap keeps the marker clean and fresh between uses.
- Weather-resistant and UV-resistant paint for long-lasting marks.
- Solid paint marker advances and retracts in plastic holder by turning twist-up knob.

Length: 6 in

Temp. Range: 0° F - 392° F

Flash Point: 67.8° C

SKU	Dia.
434-61051	11/16 in

## MARKER HOLDERS



### Starter Lead Pro Holders

**Features:**

- Mechanical holder for hard-to-reach areas.

**Includes:** Built in Sharpener

**Material:** Metal

**Length:** 6.125 in

**Width:** 0.5 in

**Height:** 1 in

SKU	Used With
434-96270	Markal Pro Refills

## MARKERS



### Prime-Action™ Paint Markers

**Features:**

- Permanent, durable, fast-curing, industrial-strength paint is a great choice when you need your work to last.
- Rugged Prime-Action™ tip.
- Lead- and xylene-free paint.
- Marks on all surfaces, whether they're clean, dirty or oily.
- Reversible tip - switch easily between a bullet and chisel nib, depending on your needs.

**Temp Range:** -50° F - 150° F

**Capacity Vol.:** 10 ml

SKU	Color	Tip Size	Tip Type
900-PAINTMKR-YEL	Yellow	3/16 in; 1/8 in	Poly;Chisel/Bullet
900-PAINTMKR-WHT	White	2 mm x 4 mm	Poly; Reversible; Chisel/Bullet



### BRITE-MARK® Medium Paint Markers

**Features:**

- Make permanent bright marks on metal, rubber, plastic, glass, concrete, leather, stone, wood, vinyl and more.
- Formula is not xylene-based.
- Valve actuated mechanism prevents paint in barrel from drying when cap is left off.
- Heavy duty aluminum body with large paint capacity.
- Ideal for color coding.
- Bullet tips are replaceable to ensure complete use of paint in each marker.
- Drying Time: 25 – 35 seconds.

**Tip Size:** Medium; Fiber #15

**Tip Type:** Bullet

**Temp Range:** 0° F - 350° F

SKU	Color
253-84003	White



### Paint-Riter® Valve Action® Paint Markers

**Features:**

- Variety of colors for improved mark identification, quality control, and parts inspection.
- Fast-drying, permanent paint for immediate handling reduces work downtime.
- Xylene-free paint reduces user health risks and makes for a safer marking tool.
- Dura-Nib medium bullet tip resists wear to provide long marking life.
- Durable metal barrel and clip-cap reduce breakage and store easily in pocket.

**Tip Size:** 1/8 in

**Tip Type:** Round Bullet

**Temp Range:** -50° F - 150° F

**Capacity Vol.:** 10 mL

SKU	Color
434-96820	White
434-96821	Yellow
434-96822	Red
434-96823	Black
434-96824	Orange
434-96825	Blue





## Quik Stik®+ Oily Surface Mini Solid Paint Markers

### Features:

- Industrial-strength paint dries quickly for long-lasting, permanent marks.
- Marks on virtually any surface-oily, wet, smooth, or rough.
- Solid paint marker easily advances for paint on demand.
- Airtight, self-storing cap keeps the marker clean and fresh between uses.
- Cured marks will withstand temperatures in excess of 500° F (250° C).
- Made in USA.

**Temp Range:** 40° F - 400° F

SKU	Color
434-28770	White

## Silver-Streak® Metal Marker Refills

### Features:

- Highly-visible marks illuminate when cutting or welding.
- Superior to soapstone in markability and durability-will not rub, burn, or blow off surface.
- Marks on oily, wet, or rusty metals, and will not scratch or abrade surfaces.

**Tip Size:** 1/16 in

**Temp Range:** 0 °F - 150 °F



SKU
434-96007



## Silver-Streak® Metal Markers with Mechanical Holder

### Features:

- Highly-visible marks illuminate when cutting or welding.
- Superior to soapstone in markability and durability-will not rub, burn, or blow off surface.
- Marks on oily, wet or rusty metals, and will not scratch or abrade surfaces.
- Durable, mechanical holder prevents stick breakage and features a convenient, built-in sharpener, and pocket clip for easy storage.

**Tip Size:** 1/8 in

**Tip Type:** Round

SKU
434-96006



## Trace Element Certified Markers

### Features:

- Contains trace element certified ink.
- Meets requirements for nuclear energy, aerospace, electronic, aeronautic and ship-building industries.
- Each marker is identified with the batch number of the ink.
- Writes on most surfaces.

**Tip Type:** Fine Point

SKU	Physical Form
652-13401	Trace Element Certified (T.E.C.) Ink

## PENCILS



## Red-Riter® Welder's Pencils

### Features:

- Economical, high-strength pencil is ideal for marking all types of metal surfaces – even oily, rusty or wet surfaces.
- Marks resistant to torch flames, will not rub off or burn off like soapstone.
- Highly visible marks illuminate when cutting or welding.
- Durable marks will not scratch or abrade metal surfaces.
- Hexagonal shape reduces barrel roll.
- Pre-sharpened pencils can be easily resharpened with any standard pencil sharpener.
- Highly visible red color for aluminum or other bright metals.

**Length:** 4-5/8 in

SKU
434-96100



## Silver-Streak® Welders Pencils

### Features:

- Economical, high-strength pencil is ideal for marking all types of metal surfaces – even oily, rusty or wet surfaces.
- Marks resistant to torch flames, will not rub off or burn off like soapstone.
- Highly visible marks illuminate when cutting or welding.
- Durable marks will not scratch or abrade metal surfaces.
- Hexagonal shape reduces barrel roll.
- Pre-sharpened pencils can be easily resharpened with any standard pencil sharpener.
- Highly visible silver color for darker surfaces.

**Length:** 7 in

SKU	Lead Grade
434-96101	#2

## PRISMACOLOR



### Verithin Art Pencils

**Features:**

- Artists' quality for every level of expertise.
- High quality pigments for rich color saturation.
- Hard, thin cores can be sharpened to a fine point.
- Ideal for outlining, detailing, lettering and cleaning up edges.

**Color:** Metallic Silver

SKU	Lead Grade
652-2460	Hard

## SOAPSTONE HOLDERS



### Standard Soapstone Holders

**Features:**

- Pocket clip.
- Positive lock adjustment.
- Spring tension friction guide for soapstone.

**Includes:** Pocket Clip; Soapstone

SKU	Shape	Length	Used With
900-RH-30	Round	5 in	Standard Round Soapstone
900-SH-10	Flat	5 in	Standard Flat Soapstone

## WYPO



### Flat Soapstone Holders

**Features:**

- Quality construction for durability and appearance.
- Spring steel pocket clip oversized to fit leather aprons.
- Non-corrosive channel with brass indexing trigger provides superior sliding action.
- Practical design allows for one handed operation and easy use.
- Brass trigger depresses and slides to proper alignment hole and snaps back to lock in position.

SKU	Shape	Length	Includes
326-400-1	Flat	5 in	Holder only
326-SP-400-1	Flat	5 in	Soapstone

## WYPO



### Round Soapstone Holders

**Features:**

- Locking cap allows accurate adjustments for closer marking control.
- Slim design provides better visibility in the marking area.
- Inner sleeve collet securely holds the soapstone and also adjusts to grip uneven and undersized soapstone.

SKU	Shape	Length	Used With	Includes
326-800-1	Round	5 in	Round Soapstone	Holder only
326-SP-800-1	Round	5 in	Round Soapstone	(4) Soapstones

## SOAPSTONES



### Soapstones

**Features:**

- All white texture for excellent marking quality.
- Grain cut to ensure good strength and long service life.
- Marks will not contaminate welds and are easily removed.
- Low water content for increased hardness and resistance to breakage.

**Length:** 5 in

SKU	Shape
900-RD-5	Round
900-FL-5	Flat
900-FL-5-THIN	Flat

## TEMPERATURE INDICATORS



### Tempilstik® Temperature Indicator Sticks

**Features:**

- Specially engineered for accurate temperature indication in pre-heating, interpass, and post-weld heat treating applications.
- Available from 100° F (38° C) to 2,000° F (1,093° C).
- Stick instantly melts at designated temperature for easy and immediate visual inspection.
- Calibration-free with 100% reliability.
- Accurate to within +/- 1% of Fahrenheit and +/- 3% Celsius rated.
- Imprinted part number, temperature, and lot code across entire stick for improved traceability.
- Made in USA.

**Accuracy:** ±1 %

SKU	Temp. Range	Length
434-28006	150° F	0.625
434-28012	200° F	0.625
434-28019	250° F	0.625
434-28026	300° F	0.625
434-28031	350° F	0.625
434-28035	400° F	0.625
434-28039	450° F	0.625



# TEMPERATURE INDICATING PRODUCTS

Whether used as part of a manufacturing process, welding, metal fabrication, or in quality control to help prevent damage caused by high temperatures, accurate temperature indication is a vital part of almost all industrial environments. For over 90 years, we have been a leading and trusted name in fast, reliable, and accurate temperature indication products for almost any job.



## Accurate Temperatures

Accurate to within +/-1% Fahrenheit and +/-3% Celsius rated temperatures

Imprinted part number, temperature and lot code across entire stick for improved traceability

## 100% Reliability

Calibration-free

## Melts Instantly

Melts at designated temperature for easy and immediate visual inspection



MADE IN USA ★



## CARTS & TRUCKS

### Cylinder Cart Parts & Accessories

#### 4B's Bracket Company

### Cylinder Holders

**Features:**

- Cylinder holders will hold your tanks safely in place.
- The rubber gasket on the inside of the holder eliminates all concern of friction and noise.
- Just a few turns with your fingers tightens or loosens the wing nut, which holds the tank firmly in place, or lets the bolt swing out of your way.
- The holder is hinged and swings back giving you access to the tank much quicker and easier than chains and makeshift methods.



SKU	Material	Dia
344-TH-108	Steel; Rubber Gasket	8 in - 8-3/4 in
344-TH-109	Steel; Rubber Gasket	9 in - 9-3/4 in



### Gas Cylinder Holder

**Features:**

- Heavy-duty steel brace keeps gas cylinder firmly in place.
- Rubber padding reduces friction and provides reliable, tight grip.



SKU	Dia	Width
900-CYH-106	6-1/2 in - 7-1/4 in	2 in
900-CYH-107	7-1/4 in - 8 in	2 in
900-CYH-108	8 in - 8-3/4 in	2 in
900-CYH-109	9 in - 9-3/4 in	2 in

### Cylinder Carts & Trucks



### Series 140 Trucks

**Features:**

- Welded on tool boxes are standard on all three sizes of trucks in this series.
- Hose hooks and welding rod holder tubes provide greater utility.
- Handles small, medium and large cylinders.
- Deluxe Models have refinements and features such as handle bars with hand grips for better control and stability when moving the loaded unit.



**Width:** 28 in

**Height:** 46 in

**Acetylene Cylinder:** 10-1/2 in

**Oxygen Cylinder:** 9-1/4 in

SKU	Load Cap.	No. of Cylinders
338-142-86	300 lb	2



### 550 Series Carts

**Features:**

- Perfect for larger construction and industrial sites where lifting cylinders is necessary.
- Accommodates variable wheel sizes.

**Cylinder Diam:** 12-1/2 in

**Depth:** 13 in

**Width:** 35 in

**Height:** 62 in

**Acetylene Cylinder:** 12-1/2 in

**Oxygen Cylinder:** 9-1/2 in



SKU	Load Cap.	No. of Cylinders
339-552-16FW	1000 lb	2

### 800 Series Carts

**Features:**

- Light duty cart designed to carry small oxygen and acetylene cylinders.
- Standard with a lower band for attaching smaller cylinders using a cylinder retaining clamp.

**Oxygen Cylinder:** 9-1/2 in

**Load Cap.:** 400 lb

**No. Of Cylinders:** 2



SKU	Cylinder Diam	Depth	Width	Height	Acetylene Cylinder
339-860-14	9-1/2 in	12 in	21 in	42 in	6-1/2 in
339-870-14	12-1/2 in	12-1/2 in	30 in	44 in	12-1/2 in

## STANDS & RAMPS



### Heavy Duty Pipe Stands

**Features:**

- Features sturdy knockdown frame.
- Effectively holds pipe and tubing in position during pipe welding applications.
- Adjustable height.

**Height:** 28 in - 49 in

**Material:** All Steel



SKU	Load Cap.	Pipe Diam.
900-PIPE-STAND-HDJ	2500 lb	1/2 in - 18 in



## Hi-Jack Style Pipe Stands

### Features:

- Features durable folding frame.
- Effectively holds pipe and tubing in position during pipe welding applications.
- Adjustable height.

**Height:** 28 in - 49 in

**Material:** All Steel



SKU	Load Cap.	Pipe Diam.
900-PIPE-STAND-HJ	2500 lb	1/2 in - 18 in



## Fold-A-Jack® Style Hi Jacks

### Features:

- Quick-action lock washer for fast height positioning.
- Fall Guard™ feature allows 1 in safety zone around lock washer.
- Set screw can lock jack head to stand for transportation.

**Height:** 28 in - 49 in

**Material:** Carbon Steel



SKU	Load Cap.	Pipe Diam.
432-781300	2500 lb	1/8 in - 24 in

## FLANGE PINS & ALIGNERS



## Two Hole Pins

### Features:

- Sturdy two hole pins are machined from hardened steel for added durability and longevity.
- Utilize fast double lead threads instead of ACME threads for a more reliable hold over time.
- Lightweight.



SKU	Material	Pin Type	Hole Diam
496-42050-TM	Alloy Steel	Threaded Mini	5/16 in - 63/64 in
496-42050-T	Alloy Steel	Threaded	1/2 in - 1-7/16 in
496-42050-TL	Alloy Steel	Large Threaded	1/2 in - 1 15/16 in

## GAUGES/GAGES

### Pressure Gauges



## Pressure Gauges

### Features:

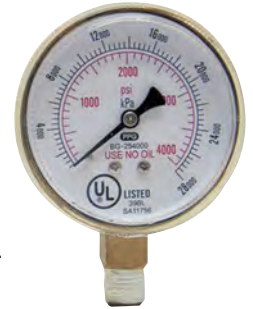
- One-piece threaded polycarbonate lens.
- Cupped aluminum dial with white background and red and/or black markings.

**Mounting:** Bottom

**Display Type:** Dial

**Lens Material:** Polycarbonate

**Body Material:** Brass



SKU	Connection Size	Accuracy	Operating Pressure	Dia.
900-B230RL	1/4 in NPT	3%-2%-3% per ANSI B40.1 grade B	30 psi	2 in
900-B2400	1/4 in NPT	3%-2%-3% per ANSI B40.1 grade B	400 psi	2 in
900-B24000	1/4 in NPT	+/- 3-2-3 %	4000 psi	2 in
900-B254000	1/4 in NPT	3%-2%-3% per ANSI B40.1 grade B	4000 psi	2-1/2 in

### Specialty Gages



## Weld Fillet Gauges

### Features:

- Gauge is rust-proof and bend proof.
- Die blanked to eliminate sharp edges and add to accuracy.
- Permanently etched for long life.

**Accuracy:** +/- 5.6 micron

**Finish:** Matt Polished



SKU	Measuring System	Range
100-NFG-7	Inch; Millimeter	1/8 in - 1 in



## Sheet Metal Gages

### Features:

- For gaging uncoated sheet metal, plate iron, and steel.
- Gage numbers are U.S. standard 0 to 36, based on weights in ounces per square inch.
- Decimal equivalents of each size are stamped on reverse side.

**Finish:** Chrome



SKU	Measuring System	Range
318-21	U.S. Standard	#0 - #36

## INSPECTION MIRRORS & MAGNIFIERS



### Telescoping Inspection Mirrors

**Features:**

- Mirror can be adjusted to nearly any angle for optimal viewing.
- Grips prevent drops and slipping in wet or oily hands.

**Material:** Stainless Steel



SKU	Shape	Mirror/Magnifier Size	Length	Handle Type
758-HTC-2	Round	2-1/4 in dia	6-1/2 in - 36-3/8 in	Standard Non-Slip Grip; Telescoping
758-HTE-2	Round	1-1/4 in dia	6-1/2 in - 35 in	Standard Non-Slip Grip; Telescoping
758-HTS-2	Round	3-1/4 in dia	10-1/2 in - 29-1/2 in	Standard Non-Slip Grip; Telescoping
758-K-2	Rectangular	2-1/8 in W x 3-1/2 in L	11-3/8 in - 15-1/4 in	Dipped Vinyl Grip; Telescoping

## LEVELS



### Replacement Dials & Levels

**Features:**

- Replacement dial set level for Centering Head No.
- Adjustable bubble protractor that covers 180 degrees through two 90 degree quadrants, reading in 2.5 degree increments.
- Used with Jackson Safety Curv-O-Mark® tools, including #4, #6, #7, #8, #20 and #33.
- Bubble cast in aluminum dial for added durability.

**Includes:** "Dial Set Level Bubble protractor; attachment tools"

**No. of Vials:** 1

**Vial Material:** Aluminum

**Structure:** Bubble Protractor

**Body Material:** Aluminum

**Wt.:** 0.05 lb



SKU
430-14797



### 500 Series Magnetic I-Beam Levels

**Features:**

- Impact resistant acrylic mono vials offer superior durability.
- All metal I-Beam frame offers superior durability and protects long-life accuracy.
- High contrast vial surrounds improve vial visibility.
- Ergonomic, grip zones enhance comfort and portability.
- Impact resistant endcaps protect frame and vials.
- Hang hole for ease of storage.
- Made in U.S.A.

**Accuracy:** 0.0005 in/in

**No. of Vials:** 3

**Body Material:** Aluminum

**Width:** 1 in

**Height:** 2.25 in

SKU	Length	Magnification	Vial Positions	Vial Material	Structure
272-500M.24	24 in	High-Strength	Horizontal/Vertical	Acrylic Mono	I Beam
272-500M.48	48 in	High-Strength	Horizontal/Vertical	Plastic	I Beam



### Torpedo Levels

**Features:**

- Advanced frame design.
- Magnetic-base level.
- Top-read window.
- Tri-vial versatility.

**Accuracy:** 0.001

**No. of Vials:** 3

**Vial Positions:** (1) 45°; (1) Level; (1) Plumb

**Vial Material:** Plastic

**Base Type:** Grooved; Magnetic

**Structure:** I-Beam

**Body Material:** Aluminum

**Width:** 1.6 in

**Height:** 0.6 in

**Wt.:** 0.31 lb

SKU	Length
272-581-9	9 in





## True Blue® Heavy-Duty Magnetic Torpedo Levels

### Features:

- High contrast e-BAND™ vials highlight the edge of the bubble.
- V-Groove working edge for accurate alignment on pipe or conduit.
- Aluminum frame with top read window.

**Accuracy:** 0.0005 in per in

**No. of Vials:** 3

**Vial Positions:** 45°; Level; Plumb

**Base Type:** Magnetic; V-Groove

**Body Material:** Aluminum

SKU	Length
272-em81.9	9 in



## Pocket Pro Levels

### Features:

- Magnetic.
- 2.5° Increments.
- With protractor degree dial.
- Extra strong magnets hold it firmly to any steel surface.
- There are two (2) stationery vials placed at 90° angles of each other and can be read from any surface of the level.

**Accuracy:** 0.5 degree

**No. of Vials:** 3

**Vial Positions:** (1) Level; (1) Plumb; (1) Rotating

**Vial Material:** Acrylic

**Base Type:** Flat; Magnetic

**Body Material:** Anodized Aluminum

**Width:** 5/8 in

**Height:** 1-1/2 in

**Wt.:** 0.74 lb

SKU	Length
496-PP-200	9 in

## RADIUS MARKERS



## Radius Markers

### Features:

- Precision tools made of rust proof aluminum and anodized for lasting protection.
- The arms are precisely aligned with spring tension joints to guarantee accuracy and rigidity.
- The holder accommodates flat or round soapstone and pencils.
- All are a folding type design, the three smaller models will fit conveniently into a shirt pocket.
- All have sturdy friction joints to maintain rigidity and accuracy.

**Material:** Aluminum

**Includes:** Soapstone Crayon



SKU	Size Group	Radius
430-14782	Standard	24 in



## Radius Markers

### Features:

- Precision tools made of rust proof aluminum and anodized for lasting protection.
- The arms are precisely aligned with spring tension joints to guarantee accuracy and rigidity.
- The holder accommodates flat or round soapstone and pencils.
- All are a folding type design, the three smaller models will fit conveniently into a shirt pocket.
- All have sturdy friction joints to maintain rigidity and accuracy.

**Material:** Aluminum

SKU	Size Group
496-72800	Small
496-72805	Standard

SQUARES



Framing Squares

Features:

- High-quality, standard blade-and-tongue design.
- Stamped graduations.
- Strong, epoxy-finished steel.
- Punched hang hole.
- Easy-to-read numbers.

Graduation(s): 1/8 in

No. of Scales: 1

Increment @ Scale: 1/8 in @ 1 in

Measuring System: Inch

SKU	Blade Length	Blade Width	Blade Thickness	Beam Length	Beam Width	Material
272-100	12 in	1/16 in	1/16 in	8 in	1/16 in	Steel
272-1110	24 in	2 in	1/16 in	16 in	1-1/2 in	Steel
272-1140	24 in	2 in	1/8 in	16 in	1-1/2 in	Aluminum

Rafter Squares



Features:

- Solid, one-piece aluminum extrusion outperforms brittle die casts.
- Will not rust, bend or break.
- Stamped conversion tables.
- Thick edge makes for a safer saw guide.

Graduation(s): 1/8 in

No. of Scales: 2

Increment @ Scale: 1/8 in @ 1 in

Material: Aluminum

Measuring System: Inch

SKU	Blade Length	Blade Width
272-2990	7 in	2 in
272-3990	12 in	2 in

True Blue® Combination Squares



Features:

- True Blue® vial for accuracy.
- Machined square head.
- Self-aligning drawbolt, hardened scribe.
- Etched blade with permanently marked graduations.

Finish: Matte

Material: Steel

Measuring System: Inch

SKU	Blade Length	Blade Width	Graduation(s)	No. of Scales	Increment @ Scale
272-e255	6 in	1 in	Inch	2	1/16 in @ 1 in; 1/32 @ 1 in
272-e250	12 in	1 in	16ths, 32nds	1	1/16 in @ 1 in
272-e280	16 in	1 in	1/16 in	2	1/16 in @ 1 in; 1/32 @ 1 in

COVERING PRODUCTS

Tarps



Multiple Use Tarps

Features:

- Sun and fade resistant.
- Rot and rust proof.
- Reinforced hem.
- Heat-sealed seams.
- Grommets every 3 ft.

Material: Polyethylene

Thickness: 5 mil

SKU	Length	Width
101-1016	16 ft	10 ft
101-2020-TARP	20 ft	20 ft

CUTTING TOOLS

Band Saws



Powerband Matrix II HSS Bi-Metal Portable Bandsaw Blades

Features:

- Cuts harder materials.
- Fits Black & Decker, Greenlee, Milwaukee, Rockwell, Ridgid, Porter-Cable, Skil, and Unitec machine models.
- For general purpose cutting on portable bandsaw machines.
- Ready-to-use.
- Welded length.

Width: 1/2 in

Thickness: 0.020 in

Teeth Per Inch: 18

Cutting Edge Material: HSS

Style: Wavy Tooth

SKU	Cutting Length
681-14602	44-7/8 in

## Chop & Cut-Off Saws



### Metal-Cutting Saw Blades

**Features:**

- Evolution saw blades are designed to deliver maximum performance by using the highest grade carbide, hardened blade bodies, and ultra high-grade brazing techniques.
- All offer premium quality.
- Designed to increase performance.

**Arbor Diam:** 1 in

**No. of Teeth:** 66

**Speed:** 1600 rpm

**Cutting Edge Material:** Carbide

**Wt.:** 3.35 lb



SKU	Blade Diam	Thickness
510-14BLADEST	14 in	0.079 in

## FINISHING TOOLS

### Grinders



### Hexagonal Hole Flanges

**Features:**

- Replacement part.
- Fits various DeWalt® models.



SKU	Material
115-N134467	Metal



### Medium Angle Grinders

**Features:**

- AC/DC capacity works off welding machines and generators for increased productivity and versatility.
- Rear handle design for greater comfort and control.
- External brush doors for easy servicing.
- Motor provides high speed for fast material removal.
- Sealed ball and roller bearings for extended motor life.
- High power-to-weight ratio for greater efficiency and reduced user fatigue.

**Watts:** 2250 W

**Speed:** 8500 RPM

**Control Type:** Trigger Switch

**Spindle Thread:** 5/8 in to 11 in

**Includes:** 7 in Wheel; 7 in Type 27 Guard; 2-position Side Handle; Hex Key; Inner and Outer Flange; DW840 Grinder



SKU	Wheel Dia	Amps
115-DW840	7 in	13 A



### Small Angle Grinders



**Features:**

- 11 Amp AC/DC 11,000 RPM motor designed for faster material removal and higher overload protection.
- Low profile gear case allows tool to fit into tight spaces.
- Quick-Change™ Wheel Release provides easier and quicker wheel removal without the need for a wrench.

**Watts:** 1400 W

**Speed:** 11000 RPM

**Spindle Thread:** 5/8 in - 11

SKU	Wheel Dia	Amps	Control Type	Includes
115-DWE402	4-1/2 in	11 A	Paddle Switch with Lock-Off	2-Position Side Handle; 4-1/2 in One-Touch™ Type 27 Guard
115-DWE402N	4-1/2 in	11 A	Paddle Switch with No Lock-On	One-Touch™ Guard; 2-Position Side Handle; Wrench



### 1-1/2 in Die Grinders

**Features:**

- Motor provides high power and speed for all 1-1/2 in grinding applications.
- AC/DC capacity works off welding machines and generators for increased productivity and versatility.
- Precision 1/4 in collet securely holds all proper accessories (1/8 in reducing sleeve as optional accessory).

**Watts:** 350 W

**Amps:** 4.2 A

**Speed:** 25,000 RPM

**Includes:** (2) Wrenches; Collet

SKU	Collet Size	Wheel Dia	Control Type
115-DWE4887	1/4 in	1-1/2 in	Paddle; Lock-On Button
115-DWE4887N	1/4 in	1-1/2 in	Paddle; No-Locking

## CLOTHING PROTECTION

### Aprons



### Blue Denim Aprons

**Features:**

- Sturdy apron is made from 100% cotton denim fabric.
- Made with serged seams and pre-shrunk for optimum launderability.
- Metal grommets hold neck strap and waist ties, adding durability and comfort.
- A convenient pocket makes it easy to tote around the necessities.

**Width:** 28 in

**Material:** 3 x 1 Weave; 10 oz; 100% Cotton/Denim



SKU	Length
902-200-011	36.5 in





## Chaps

### Features:

- Adjustable waist belt and a quick release buckle.
- Thigh, knee and leg straps are fitted with adjustable snap fasteners.

**Width:** 14 in

**Material:** Leather



SKU	Length
902-Q-13	40 in

## Flame-Retardant Cotton Sateen Bib Aprons

### Features:

- Made from durable 9 oz flame-retardant (FR) cotton sateen.
- Adjustable neck and waist straps.

**Width:** 24 in



SKU	Length
902-CA-400	36 in
902-CA-500	42 in

## Flame-Retardant Cotton Sateen Bib Aprons with Leather Protective Patch

### Features:

- Made from durable flame-retardant (FR) cotton sateen.
- Leather patch for added protection.
- Adjustable neck and waist straps.

**Width:** 24 in



SKU	Length
902-CA-700	42 in

## Premium Side Split Cowhide Leather Bib Aprons

### Features:

- Constructed with high-quality, durable, and pliable side split cowhide.
- Seams are double-lock stitched with 5-ply Kevlar® thread.
- Riveted seams at major stress points for maximum durability.
- Adjustable self-balancing shoulder straps.
- 40 in adjustable waist with quick-release strap.

**Width:** 24 in



SKU	Length
902-400	36 in
902-500	42 in



## Select Split Cowhide Leather Bib Aprons

### Features:

- Constructed with select split cowhide.
- Sewn with Kevlar® thread.
- Riveted seams at major stress points for maximum durability.
- Adjustable self-balancing shoulder straps.
- 40 in adjustable waist with quick-release strap.

**Width:** 24 in



SKU	Length
902-Q-5	36 in
902-Q-6	42 in
902-Q-7	48 in

## Coats & Jackets



## Flame-Retardant Cotton Sateen Jackets

### Features:

- Attractive cotton sateen jacket features a full jacket collar.
- Adjustable black snaps on cuffs provide additional flashback protection.
- Made from 100% flame retardant (FR) cotton sateen fabric.

**Closure Type:** Snaps

**Length:** 30 in



SKU	Size Group
902-CA-1200-M	Medium
902-CA-1200-L	Large
902-CA-1200-XL	X-Large
902-CA-1200-2XL	2X-Large
902-CA-1200-3XL	3X-Large
902-CA-1200-4XL	4X-Large

## Leather/Flame-Retardant Sateen Combo Jackets

### Features:

- Five insulated snaps with spatter guard front closure keep wearer safe and secure.
- Flame retardant sateen body for cool protection.
- Leather sleeves for heat, flame and abrasion resistance.

**Closure Type:** Dielectric Snaps



SKU	Size Group	Length
902-1201-L	Large	30 in
902-1201-XL	X-Large	32 in
902-1201-2XL	2X-Large	33 in



## Split Cowhide Leather Welding Jackets

### Features:

- Quality leather jacket constructed with select split cowhide.
- Heat- and abrasion-resistant to withstand general welding applications.
- Sewn with KEVLAR® thread with riveted seams at major stress points for maximum durability.

**Closure Type:** Snaps

**Length:** 30 in



SKU	Size Group
902-Q-1-L	Large
902-Q-1-XL	X-Large
902-Q-1-2XL	2X-Large

## Coveralls & Overalls



## ProShield® 6 Secondary Flame-Retardant Coveralls

### Features:

- Lightweight, disposable, secondary flame resistant over-garment designed to help protect and preserve primary flame-resistant garments.
- Provides a barrier against non-hazardous dirt, grease, grime and aerosols.
- Won't ignite and continue to burn when exposed to a flame source.

**Style:** Open Wrists and Ankles

**Material:** ProShield® 6 SFR



SKU	Size Group
251-TM120S-XL	X-Large
251-TM120S-2XL	2X-Large

## Sleeves & Bibs



## Flame-Retardant Cotton Sateen Cape Sleeves

### Features:

- 9-oz flame-retardant cape sleeves provide protection at minimal cost.
- Under-the-arm sport cut for increased mobility and hemmed collar to retain shape after many washings.
- Retains flame retardancy for up to 50 normal home washings and 25 commercial.

**Material:** 9 oz FR Cotton Sateen



SKU	Size Group	Closure Type
902-CA-650-M-SNAPS	Medium	Snaps
902-CA-650-L	Large	Hook-and-Loop
902-CA-650-L-SNAPS	Large	Snaps
902-CA-650-XL-SNAPS	X-Large	Snaps

## Flame-Retardant Cotton Sateen Sleeves

### Features:

- Reliable forearm protection.
- Elastic cuff for comfort.

**Closure Type:** Snaps



SKU	Size Group	Length
902-CA-350	One Size Fits Most	23 in

## Flame-Retardant Sateen Sleeves

### Features:

- Made with flame retardant (FR) cotton sateen.
- Elastic at both ends (bicep and wrist) for arm protection.

**Closure Type:** Elastic Bicep and Wrist



SKU	Size Group	Length
902-CA-340-18	One Size	18 in



## Leather Cape Sleeves

### Features:

- High quality leather cape sleeves.
- Provides effective resistance against cuts, sparks and slag.
- Adjustable cuffs with wrist snaps.

**Material:** Split Cowhide

**Closure Type:** Snaps



SKU	Size Group	Length	Width
902-Q-2-L	Large	14 in	44 in - 46 in
902-Q-2-XL	X-Large	14 in	48 in - 50 in
902-Q-2-2XL	2X-Large	14 in	52 in - 54 in
902-Q-2-3XL	3X-Large	14 in	56 in - 58 in

## Leather Sleeves

### Features:

- Protective leather sleeve is heat resistant, soft, pliable, and yet very durable.
- Adjustable black snaps at wrist.

**Material:** Leather

**Closure Type:** Snaps



SKU	Size Group	Length
902-350	One Size Fits Most	23 in
902-Q-12	One Size Fits Most	23 in

## EAR PROTECTION

### Earplug Parts & Accessories



## PlugStation® Earplug Dispensers

### Features:

- Compliance — High visibility to increase awareness for your hearing conservation program.
- Convenience — Hang a PlugStation® anywhere plugs are needed.
- Workers take one pair at a time so there are no wasteful grabbing of multiple pairs.
- When PlugStation® is empty, simply dispose of it and hang a new one.

**Includes:** Dispensers with Uncorded Earplugs; Mounting Brackets

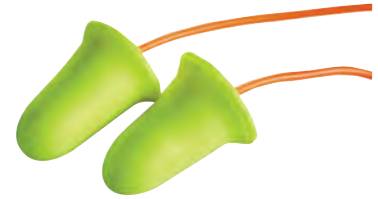


SKU	Used With
507-6645	SparkPlugs® Earplugs; Uncorded
507-6845	Pura-Fit® Earplugs; Uncorded

## Earplugs



## 3M™ E-A-Rsoft™ FX™ Earplugs 312-1260



### Features:

- Soft, slow-recovery foam.
- Earplugs effectively seal the ear canal and provide reliable hearing protection.
- Flared end helps make fitting and removal easier.

**Type:** Corded

SKU	Noise Reduction	Body Material
247-312-1260	33 dB	Polyurethane

## 3M™ E-A-R™ Classic™ Foam Earplugs



### Features:

- Flame-retardant.
- Moisture resistant.
- Shape prevents shifting and keeps effectiveness of noise seal constant.
- Slow recovery PVC foam provides comfort with low pressure.

SKU	Noise Reduction	Body Material	Type
247-310-1001	29 dB	Polymer Foam	Uncorded
247-311-1101	29 dB	Polymer Foam	Corded

## 3M™ E-A-R™ EXPRESS™ Pod Plugs™ Earplugs 311-1115



### Features:

- Design reduces the potential for hand-to-ear contamination.
- More hygienic than a disposable foam earplug.
- Unique pod design helps make an effective seal for most ear canals.
- First push-to-fit earplug, when a push to fit earplug is defined as having a slow recovery foam tip.
- A flexible stem makes inserting easy.

**Type:** Corded

SKU	Noise Reduction	Body Material
247-311-1115	25 dB	Polyurethane





## 3M™ E-A-R™ UltraFit™ Earplugs 340-4004

### Features:

- Conforms to oval shape of ear.
- No rolling or touching plug portion during insertion.
- Proprietary, premolded, triple-flange earplug design inserts easily and provides a comfortable fit for a reusable earplug.

Type: Corded

Packing Type: Poly Bag



SKU	Noise Reduction	Body Material
247-340-4004	25 dB	Elastomeric Polymer

## 3M™ Foam Earplugs 1100

### Features:

- Smooth, dirt resistant surface for hygiene.
- Tapered shape to fit the ear canal comfortably.
- Hypo-allergenic material.
- Comfortable for a wide range of ear sizes.

Type: Uncorded Tapered

Packing Type: Box



SKU	Noise Reduction	Body Material
142-1100	29 dB	Foam



AUTHORIZED DISTRIBUTOR

## Laser Lite® Disposable Earplugs

### Features:

- Vibrant colors make protection visible.
- Self-adjusting polyurethane foam expands to fit virtually every wearer.
- Contoured T-shape for easy insertion and wear.
- Smooth, soil-resistant closed cell-foam skin prevents dirt build-up.

Body Material: Polyurethane Foam



SKU	Noise Reduction	Type
154-LL-1	32 dB	Uncorded
154-LL-1-D	32 dB	Uncorded
154-LL-30	32 dB	Corded



AUTHORIZED DISTRIBUTOR

## Laser Trak® Detectable Earplugs

### Features:

- Non-ferrous metal grommet and bright colors – easily detected by visual and automated inspection.
- Self-adjusting polyurethane foam expands to fit virtually any wearer.
- Contoured T-shape for easy insertion and wear.

Body Material: Foam



SKU	Noise Reduction	Type
154-LT-30	32 dB	Corded

## MAXIMUM Disposable Earplugs

### Features:

- Contoured design easier to insert, resists tendency to back out of ear canal.
- Polyurethane foam enhances comfort, especially for long-term wear.
- Smooth, soil-resistant closed cell-foam skin prevents dirt build-up.
- Bell shape delivers maximum in-ear comfort.

Body Material: Polyurethane Foam



SKU	Noise Reduction	Type
154-MAX-1	33 dB	Uncorded
154-MAX-30	33 dB	Corded

## MAXIMUM LITE Disposable Earplugs

### Features:

- Low pressure polyurethane foam expands gently for comfortable long-term wear.
- Contoured T-shape for easy insertion and wear.
- Smooth, soil-resistant closed cell-foam skin prevents dirt build-up.

Body Material: Foam



SKU	Noise Reduction	Type
154-LPF-30	30 dB	Corded
154-LPF-1	30 dB	Uncorded
154-LPF-1-D	30 dB	Uncorded

**MOLDEX****Pura-Fit® Foam Earplugs****Features:**

- Long length for easy fitting and removal.
- Bright color for easy compliance checks.
- Tapered design to fit the ear canal.
- Non-irritating, smooth surface for added comfort.

**Body Material:** Foam

SKU	Noise Reduction	Type
507-6800	33 dB	Uncorded

**SparkPlugs® Foam Earplugs****Features:**

- Extra soft foam and tapered design fit snugly and comfortable in the ear.
- Bright, fun colors provide easy compliance checks.



SKU	Noise Reduction	Type
507-6604	33 dB	Uncorded

**EYE PROTECTION****Safety Glass Parts & Accessories****Lens Cleaning Towelette Dispensers****Features:**

- Pre-moistened with C-Clear Anti-Fog, Anti-Static formula for use on plastic, polycarbonate and glass lenses.
- Strategic placement of towelette dispensers throughout a facility will promote proper lens cleaning habits and extend the life of prescription and non-prescription eyewear.
- Contains no silicone.
- Safe and effective with all lens coatings including Anti-Reflective Coating.
- Also good for use on goggles, face shields, CRT screens and microscopes.

**Width:** 5 in

SKU	Includes	Length
101-70-AB	100 Packaged Towelettes	8 in

**RADIANS****Slip-On Sideshields****Features:**

- These flexible sideshields are engineered to fit all types of eyewear including prescription glasses.
- Dust and nuisance protection.
- Easy-on, easy-off.

SKU	Width
292-99705	2in

**Safety Glasses****Clear Frameless Safety Glasses****Features:**

- These clear frameless safety glasses are scratch resistant.
- Good for everyday use or a visitor spec.
- Lightweight glasses that are good for long term wear.

**Lens Material:** Polycarbonate

SKU	Frame Color
101-VSC110	Clear

**KLEENGUARD™****V10 Element™ Safety Glasses****Features:**

- Metal-free design with screw-less hinges.
- Polycarbonate lenses provide 99.9% UVA/ UVB/UVC protection.
- Element safety glasses feature a 10 base curve and are TAA compliant.

**Lens Tint:** Clear**Lens Material:** Polycarbonate**Resistance:** 99.9% UVA/UVB/UVC; Impact

SKU	Frame Color
412-25627	Clear



**KLEENGUARD™**

## V30 Nemesis™ Safety Glasses



### Features:

- Safety glasses feature a sporty, flexible, lightweight design.
- Wraparound frame has a base curve of 8 that extends the range of peripheral protection, as well as soft touch temples for comfort.
- Patented FLEX-DRY\* nose piece designed to be extremely flexible, to channel sweat away from the eyes, and to help prevent slippage down the nose for long-term comfort.
- Polycarbonate lenses provide 99.9% UVA/UVB/UVC protection.
- Includes neck cord for securing them, so that the glasses are ready to protect at a moment's notice.

**Lens Material:** Polycarbonate

SKU	Frame Color	Temple Color	Lens Tint	Lens Coating/Shade
<b>99.9% UVA/UVB/UVC</b>				
412-14481	Black	Black	Blue Mirror	Mirror
412-19639	Blue	Black	Light Blue	Uncoated
412-19644	Camouflage	Camouflage	Bronze	Uncoated
412-25659	Black	Black	Amber	Uncoated
412-25671	Black	Black	IRUV Shade 5	Uncoated; IRUV Shade 5
412-25676	Black	Black	Clear	Uncoated
412-25685	Black	Black	Indoor/Outdoor	Uncoated
412-25688	Black	Black	Smoke Mirror	Mirror
412-25692	Black	Black	IRUV Shade 3	Uncoated; IRUV Shade 3
<b>99.9% UVA/UVB/UVC; Fog</b>				
412-22475	Black	Black	Smoke	Anti-Fog
412-22609	Camouflage	Camouflage	Smoke	Anti-Fog
412-22611	Red	Red	Smoke	Anti-Fog
412-25679	Black	Black	Clear	Anti-Fog



## V40 Hellraiser™ Safety Glasses

### Features:

- Comfortable eye protection helps drive compliance, so these feature flex point temples for comfort and stability.
- Use them for men and women in a variety of work environments.
- Features single-lens wraparound protection that's designed for use at work or home.
- High-performance, durable polycarbonate lenses, which provide 99.9% UV protection (UVA/UVB/UVC).

**Lens Tint:** Smoke

**Lens Material:** Polycarbonate

**Lens Coating/Shade:** Uncoated

SKU	Frame Color	Temple Color
412-25714	Black	Black



**KLEENGUARD™**

## V50 OTG Safety Glasses



### Features:

- Made with a nylon frame for strength, durability, and comfort and fits over most prescription glasses.
- See-through side shields provide side impact protection without blocking peripheral vision.
- Provides 99.9% UV protection (UVA/UVB/UVC).

**Lens Material:** Polycarbonate

SKU	Frame Color	Temple Color	Lens Tint	Lens Coating/Shade
412-20746	Black	Black	Clear	Anti-Fog
412-21917	Black	Black	IRUV Shade 5.0	Uncoated

## V60 Nemesis™ Rx Readers Prescription Safety Glasses



### Features:

- Features a sporty, flexible, lightweight design.
- Wraparound frame has a base curve of 8 that extends the range of peripheral protection, as well as soft touch temples for comfort.
- Corrective lenses are hard coated for scratch resistance and longer life.
- Patented FLEX-DRY\* nose piece designed to be extremely flexible, to channel sweat away from the eyes, and to help prevent slippage down the nose for long-term comfort.
- Polycarbonate lenses provide 99.9% UVA/UVB/UVC protection.
- Includes neck cord for securing them, so that the glasses are ready to protect at a moment's notice.

**Lens Material:** Polycarbonate

**Lens Coating/Shade:** Hard Coated

SKU	Frame Color	Temple Color	Lens Tint	Diopter Strength
412-22516	Black	Black	Smoke	+1.5
412-22518	Black	Black	Smoke	+2.0
412-28621	Black	Black	Clear	+1.5
412-28624	Black	Black	Clear	+2.0
412-28627	Black	Black	Clear	+2.5





## BearKat® BK1 Series Safety Glasses



### Features:

- The BearKat® BK1's super well thought-out construction combines the best in safety, comfort, and affordability.
- Your vision is unobstructed by the one-piece wraparound lens, which by its tight fit allows you maximum safety.
- Comfort is enhanced by the flexible temples and the non-slip temple sleeves are notched for a clip-on breakaway cord.

**Lens Material:** Polycarbonate

**Lens Coating/Shade:** Duramass® Scratch-Resistant

SKU	Frame Color	Temple Color	Lens Tint
135-BK110	Clear	Clear	Clear
135-BK112	Gray	Gray	Gray

## Checklite® CL1 Frameless Safety Glasses



### Features:

- Rugged polycarbonate lens.
- Filters 99.9% of harmful UV rays.
- Smaller frame sized to fit smaller faces.
- Good for everyday use or a new visitor spec.

**Lens Tint:** Clear

**Lens Material:** Polycarbonate Lens with Nose Piece

**Lens Coating/Shade:** Duramass® Hard Coat

SKU	Temple Color
135-CL110	Clear Polycarbonate

## Safety Goggles



## Cup Goggles

### Features:

- Baffled side-shields allow maximum ventilation while preventing entry of light.
- Adjustable elastic headband and nose piece for comfort.
- Lightweight and durable.
- Complete with shade 5 lens.

**Lens Coating/Shade:** IR/UV 5.0

**Lens Material:** Polycarbonate

**Frame Material:** Hard Plastic

**Ventilation:** Indirect

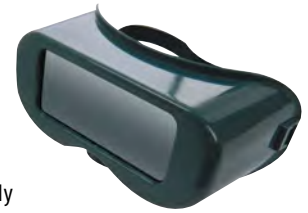
**Strap Material:** Elastic



SKU	Frame Color	Lens Tint
901-WG-50C	Green	Green



## Soft-Sided Goggle



### Features:

- Soft frame fits snugly and comfortably over face and Rx glasses.
- Hooded vents offer maximum fog-free protection.
- Accommodates magnifier plate.
- Complete with shade 5 lens.

**Lens Coating/Shade:** IR/UV 5.0

**Lens Material:** Hardened Glass

**Frame Material:** Vinyl

**Ventilation:** Hooded Vent

**Strap Material:** Elastic

SKU	Frame Color	Lens Tint	Type
901-WG-2414SFF	Green	Green	Fixed Front
901-WG-2414SLF	Green	Green	Lift Front



**KLENGUARD™**

## V80 Wildcat™ Goggles



### Features:

- Extreme heat resistance, will not melt, drip, ignite at 350°.
- Adjustable side vents help increase airflow.
- Fits naturally to the contour of your face.
- Lightweight and comfortable with a pivot headband for optimal placement.
- Metal-free design to minimize electrical transference risk.

**Lens Coating/Shade:** Anti-Fog

**Lens Material:** Polycarbonate

**Frame Material:** Styrene-Butadiene Rubber (SBR) Foam; Thermoplastic Elastomer (TPE)

**Ventilation:** Adjustable Side Vents

**Strap Material:** Nylon Button; Polyester and Natural Rubber

SKU	Frame Color	Lens Tint
412-20529	Black	IRUV Shade 5.0

## FIRE, GAS & WATER PROTECTION

### Detectors



### BW Clip Single-Gas Detectors



**Features:**

- One button operation.
- Operates up to two years use without calibration, sensor replacement, or battery recharging/replacement.
- Wide angle flash which alerts simultaneously with audible and vibrating alarm.
- Automatic logging of the 35 most recent gas events.
- Compatible with IntelliDoX, Fleet Manager II Software.

**Gas Type:** Hydrogen Sulfide

**Temp. Range:** -40° F - 122° F

**Sound Level:** 95 dBA

**Display Type:** LCD

**Power Source:** Lithium Battery

**Run Time:** 2 Years

**Alarm Setting:** Low 10 ppm; High 15 ppm

SKU	Includes	Sensor Type
126-BWC2-H	Specified Sensor; Stainless Steel Alligator Clip; Concussion-Proof Housing; Test Cap; Instructions	Surecell™

## FOOT PROTECTION

### Footwear Covers



### Spats

**Features:**

- Elastic top with 2 buckles on back of leg.
- Metal reinforced boot.
- Sold per pair.
- Velcro fasteners that ensure a secure fit for various shoe sizes.
- Protects footwear.

**Fastening Method:** Buckles; Velcro



SKU	Size Group	Material
902-Q-15	Universal	Leather

## HAND PROTECTION

### Gloves



### Standard Weight Jersey Gloves



**Features:**

- Regular weight.
- Soft, comfortable jersey for general duty and light abrasion applications.

**Cuff Style:** Knit-Wrist

**Lining:** Unlined

SKU	Size Group	Material
101-1200	Large	Cotton; Polyester

### Cowhide Leather Palm Gloves



**Features:**

- Durable split cowhide leather palm, index finger, fingertips and knuckle strap.
- Safety cuff provides extra protection where you need it most.

**Style:** Gunn Pattern; Wing Thumb

**Cuff Style:** Rubberized Safety

**Cuff Length:** 2-1/2 in

**Lining:** Unlined

SKU	Size Group	Material
101-2100	Large	Canvas Back; Select Shoulder Leather; Split Cowhide



### 1871 Multi-Task Gloves



**Features:**

- Supple and durable full-grain Goat palm and back.
- Exclusive reverse-scalloped Boarhide™ cuff for protection against sparks and spatter.
- Reinforced thumb saddle for extended durability.
- Boarhide™ palm patch for extended wear and protection.
- Unlined and padded palm with wool insulated back.
- Ovis-Hide™ premium sheep grain pulse protector for added safety.
- Sewn with Kevlar® thread.
- Kontour™ exclusive 3-dimensional, pre-curved fingers, and form-fitting design for ultimate fit, comfort, and dexterity.

**Style:** Leather Palm/Back; Palm Patch; Reinforced Thumb Saddle; Wool Insulated Back

**Cuff Style:** Reverse-Scalloped

SKU	Size Group	Material
607-1871-XL	X-Large	Boarhide™ Leather; Kevlar® Thread; Ovis-Hide™ Premium Sheep Grain Leather



## 120-TIG Capeskin Welding Gloves

### Features:

- Weld well, with sturdy TIG welding gloves that feature a welted thumb stress point.
- Fully Kevlar® sewn for additional protection.
- Gloves offer excellent dexterity, fit and flexibility.

**Lining:** Unlined

**Style:** Standard; Gunn-Straight Thumb

**Cuff Style:** Safety



SKU	Size Group
902-120TIG-S	Small
902-120TIG-M	Medium
902-120TIG-L	Large
902-120TIG-XL	X-Large

## 7344 Leather Welding Gloves

### Features:

- Welding is hard work—luckily, sturdy leather welding gloves provide superior heat protection.
- Strong, one-piece palm has no exposed seams.
- Sewn with heat resistant Kevlar® thread for additional protection.
- Features absorbent cotton sock lining for added comfort.
- Reinforced thumb and palm.

**Lining:** Full Cotton Sock

**Style:** 7344 Welding Glove

**Cuff Style:** Gauntlet



SKU	Size Group
902-3030	Large

## COMFOflex® Premium Leather Welding Gloves

### Features:

- Heat and sweat absorbant COMFOflex® lining.
- Fully welted seams and 4-ply Kevlar® sewn.
- Next level heat resistance, with improved abrasion resistance.
- Excellent comfort, protection, and durability.

**Lining:** Full Sock

**Style:** Straight Thumb

**Cuff Style:** Leather Cuff



SKU	Size Group
902-500GC	Large



## High Heat Welding Gloves

### Features:

- Excellent choice for heavy duty MIG, TIG, Plasma, gas welding and cutting applications.
- Industrial grade aluminized backing reflects 95% of radiant heat.
- 100% of stitching is done with 4-ply Kevlar® thread.
- Sweat absorbent palm.

**Lining:** COMFOflexB

**Style:** Gauntlet

**Cuff Style:** Leather



SKU	Size Group
902-650H-XL	X-Large

## Split Cowhide Welding Gloves

### Features:

- Quality leather construction.
- Fully welted seams and Kevlar® sewn.
- Designed for standard heat resistance, with improved abrasion resistance.
- Excellent comfort, protection, and durability.

**Lining:** Full Sock

**Style:** Standard; Wing Thumb

**Cuff Style:** Leather Cuff



SKU	Size Group
902-300GC	Large



## 1485 Elk Skin Wool Insulated Unlined Palm MIG/Stick Welding Gloves

### Features:

- Made of Heavy Genuine American Elk Skin.
- Unlined reverse grain palm for dexterity and comfort.
- Thumb reinforcement strap, pulse protector.
- Natural wool insulated back.
- Completely welted seams.
- Sewn with DuPont™ Kevlar® thread.
- Kontour™ - exclusive 3-dimensional, pre-curved fingers, and form-fitting design for ultimate fit.
- Patches, padding, and reinforcements for comfort and protection.
- Complimentary 3 inch carabiner to keep gloves together with exclusive Caiman® loops on each pair.

**Lining:** Unlined; Natural Wool Insulated Back

**Cuff Style:** Gauntlet



SKU	Size Group
607-1485-M	Medium
607-1485-L	Large





## 1600 Goat Grain Leather/ Cowhide Cuff Unlined Welding Gloves

### Features:

- Resilient and durable goat grain leather gloves.
- Cowhide leather cuff.
- Constructed with Kontour™ form-fitting design.
- Sewn with Dupont™ Kevlar® thread.

**Lining:** Unlined

**Cuff Style:** Gauntlet; Cowhide



SKU	Size Group
607-1600-M	Medium
607-1600-L	Large
607-1600-XL	X-Large

## 1810 revolution® Cow Grain Unlined Palm 2-Layer Insulated Back MIG/Stick Welding Gloves

### Features:

- Constructed with TUFF-STEER™ heavy cow split leather and Kontour™ form-fitting design.
- Two-layer insulated back for protection from radiant heat.
- Top grain pigskin leather forchettes and finger tips.
- Patented double-stitched palm padding and wear-patch.
- Unlined, padded, patches, and reinforced palm for added protection and comfort.
- Large pulse protector.
- Sewn with Dupont™ Kevlar® thread.
- Complimentary 3 inch carabiner to keep gloves together with exclusive Caiman® loops on each pair.

**Lining:** Unlined

**Cuff Style:** Gauntlet



SKU	Size Group
607-1810-L	Large
607-1810-XL	X-Large



## 1812 revolution® Pig Grain FR Cotton Fleece Lined MIG/Stick Welding Gloves

### Features:

- Constructed with BOARHIDE® pig grain leather, cowhide cuff, and Kontour™ form-fitting design.
- Insulated with FR (flame resistant) cotton fleece in-sock lining.
- Double layered protection features Lean-On and Heat-Shield Reinforcements on the left hand.
- Patented double-stitched palm padding and wear-patch.
- Patches, padding, and reinforcements for comfort and protection.
- Sewn with Dupont™ Kevlar® thread.
- Complimentary 3 inch carabiner to keep gloves together with exclusive Caiman® loops on each pair.

**Cuff Style:** Gauntlet



SKU	Size Group	Material	Lining
607-1812-L	Large	Cow Grain Leather; Dupont™ Kevlar® Thread; Fleece/Foam Insulation; Pig Grain Leather	In-Sock-Insulation with FR Foam/Fleece
607-1812-XL	X-Large	Pig Grain Leather	Full Sock-Insulation with Flame-Resistant Fleece

## 1816 revolution® Deerskin FR Foam Fleece Lined MIG/Stick Welding Gloves

### Features:

- Constructed with supple American Deerskin leather, cowhide cuff, and Kontour™ form-fitting design.
- Full sock-insulation with FR (flame resistant) foam/fleece.
- Patches, padding, and reinforcements for comfort and protection.
- Large pulse protector.
- Sewn with Dupont™ Kevlar® thread.
- Complimentary 3 inch carabiner to keep gloves together with exclusive Caiman® loops on each pair.

**Lining:** Full Sock-Insulation with FR Foam/Fleece

**Cuff Style:** Gauntlet



SKU	Size Group
607-1816-L	Large
607-1816-XL	X-Large



## 1868 revolution® Goat Grain FR Back Unlined Palm TIG/MIG Welding Gloves



### Features:

- Constructed with top grain goat leather/cowhide and Kontour™ form-fitting design.
- Top grain leather fourchettes and finger tips.
- Unlined, padded, patches, and reinforced palm and thumb saddle for added protection and comfort.
- Flame Resistant (FR) insulated back.
- Large pulse protector and long leather cuff.
- Patented double-stitched palm padding and wear-patch.
- Sewn with Dupont™ Kevlar® thread.
- Complimentary 3 inch carabiner to keep gloves together with exclusive Caiman® loops on each pair.

**Lining:** Unlined Palm with FR Fleece on Back of Hand

**Cuff Style:** Gauntlet

SKU	Size Group
607-1868-M	Medium
607-1868-L	Large
607-1868-XL	X-Large

## 1878 21-in FR Insulated MIG/ Stick Welding Gloves



### Features:

- 21-inch glove with heavy-duty padding on the forearm and elbow for comfort.
- Super supple Genuine American Deerskin tanned in USA.
- Genuine leather heat shield patch, reinforced palm, cuff and lean-on patch.
- Sock-lined FR cotton fleece insulated.
- Boarhide™ leather pull-strap.
- Sewn with Kevlar® thread.
- Complimentary 3 inch carabiner to keep gloves together with exclusive Caiman® loops on each pair.
- Exclusive 3-dimensional, pre-curved fingers, and form-fitting design for ultimate fit, comfort, and dexterity.

**Lining:** Full Sock-Insulation with Flame-Resistant (FR) Fleece

**Cuff Style:** Gauntlet

SKU	Size Group
607-1878-5	Large



## Gloves for Glory® Premium Top Grain Goatskin Leather Welding Work Gloves



### Features:

- Made of premium top grain goatskin with a 4.5 in blue split cowhide leather cuff.
- Supple leather contains natural lanolin that helps create a very soft feel.
- Strong tensile strength and excellent tactile sensitivity.
- Sewn with Dupont™ Kevlar®.

**Lining:** Unlined

**Cuff Style:** Gauntlet; Split Cowskin Leather

SKU	Size Group
127-4850M	Medium
127-4850L	Large
127-4850XL	X-Large

## Goat Mig/Tig Welders Gloves



### Features:

- Grain kid goatskin.
- Greater softness for pleasant feel.
- Sewn with super-strong heat-resistant DuPont™ Kevlar® thread.
- Gloves provide excellent dexterity, easing delicate tasks.

**Lining:** Unlined

**Cuff Style:** Gauntlet

SKU	Size Group
127-4840M	Medium
127-4840L	Large

## Hand Pads & Warmers



## Back Hand Pads



### Features:

- Sturdy back hand pad protects the back of welder's glove from sparks and spatter.
- Increases life of welding gloves.
- Sewn and riveted for durability and comfort.

**Material:** Aluminized Fiberglass

**Closure Type:** Elastic Strap; High-temperature Kevlar® Strap

SKU	Length	Width	Style
902-BACK-HAND-1	7 in	5-1/2 in	Single Layer
902-BACK-HAND-2	7 in	5-1/2 in	Double Layer

## HEAD/FACE PROTECTION

### Faceshields & Visors



#### Visor Head Gear

**Features:**

- Absorbent air cushioned sweatband.
- 45 head size ratchet head gear.

**Used With:** Most Manufacturer's Head Gear/Cap Adaptors

**Length:** 23-7/8 in

**Height:** 25-1/2 in

SKU
101-UVH700

#### Visors

**Features:**

- Clear or shaded available.
- Durable and high-performance.

**Thickness:** 0.04 in



SKU	Lens Coating/Shade	Binding	Used With	Length	Height
101-3440-B-CL	Clear	Aluminum Bound	Jackson Safety® Head Gear/Cap Adaptors	15-1/2 in	9 in
101-3440-U-CL	Clear	Unbound	Jackson Safety® Head Gear/Cap Adaptors	15-1/2 in	9 in
101-3441-B-LG	Light Green	Aluminum Bound	Jackson Safety® Head Gear/Cap Adaptors	15-1/2 in	9 in
101-3442-B-DG	Dark Green	Aluminum Bound	Jackson Safety® Head Gear/Cap Adaptors	15-1/2 in	9 in
101-3442-U-DG	Dark Green	Unbound	Jackson Safety® Head Gear/Cap Adaptors	15-1/2 in	9 in
101-3465-5	Shade 5.0	Aluminum Bound	Jackson Safety® Head Gear/Cap Adaptors	15-1/2 in	9 in
101-4178-C	Clear	Unbound	Fibre-Metal® Head Gear/Cap Adaptors	16-1/2 in	8 in
101-4199-C	Clear	Unbound	Fibre-Metal® Head Gear/Cap Adaptors	19 in	9-3/4 in



AUTHORIZED DISTRIBUTOR



#### High Performance® Faceshield Windows

**Features:**

- Injection molded from propionate.
- Heat and scratch resistant.
- Fits easily and comfortably over required protective spectacles or respirators.

**Thickness:** 0.06 in

**Lens Material:** Propionate

SKU	Lens Coating/Shade	Used With	Length	Height
280-4178CL	Clear	F-400, F-500, FH-66, FM-70, FM-71 Series	16-1/2 in	8 in
280-4178CLBP	Uncoated	F-400, F-500, FH-66, FM-70, FM-71 Series; 400500667071	16-1/2 in	8 in
280-4178DGN	Dark Green	F-400; F-500; FH-66, FM-70, FM-71 Series; 400500667071	16-1/2 in	8 in
280-4178IRUV5	Shade 5	F-400; F-500; FH-66; FM-70; FM-71 Series; 400500667071	16-1/2 in	8 in
280-4199CL	Clear	F-400, F-500 & FH-66 Series; 40050066	19-3/4 in	9 in
280-4199IRUV5	Shade 5	F-400, F-500 & FH-66 Series; 40050066	19-3/4 in	9 in
280-4199CLBP	Uncoated	F400, F500	19 in	9-3/4 in



AUTHORIZED DISTRIBUTOR



#### Bionic® Face Shield Replacement Visors

**Features:**

- Provides reliable protection from airborne debris.
- Curved window provides unobstructed view.
- Reinforced polycarbonate construction.

**Height:** 9-1/2 in

**Thickness:** 0.040 in

SKU	Lens Coating/Shade	Lens Material
763-S8565	Uncoated/Shade 5.0	Polycarbonate





AUTHORIZED DISTRIBUTOR

## Bionic™ Faceshields

**Features:**

- Shell offers built-in chin protection and extended top-of-head coverage.
- Highly adjustable headgear tilts visor nearer or farther from face depending on preference and application.
- Comfortable cell foam on back of headgear.
- Breathable, removable, washable headband.
- Comfortably worn with most goggles and respirators.

**Lens Material:** Polycarbonate

**Height:** 9-1/2 in

**Length:** 14-1/2 in

**Thickness:** 0.004 in



SKU	Lens Coating/Shade	Type	Color
763-S8510	HC/AF/Clear	Faceshield	Black Matte
763-S8555	Anti-Fog/Anti-Scratch	Visor	Clear Hardcoat



## Cap Coil Spring Attachments

**Features:**

- Polyethylene spark deflector.
- For attaching any visor spark deflector combination, to any non-slotted cap.
- Metal device for non-slotted caps.
- Curved aluminum channel and coil spring attachment.



SKU	Used With	Model
138-14945	Full Brim Caps	37 HATSHIELD
138-14948	SC-6, Sentry III and Charger Hard Hats	137 Cap Shield

## F30 Acetate Faceshields

**Features:**

- Ideal for scratch resistance and premium optics.
- High-grade cast sheet acetate protects against splash.
- 99.9% UV protection.

**Binding:** Bound

**Lens Material:** Acetate

**Length:** 15-1/2 in

**Height:** 9 in



SKU	Lens Coating/Shade	Used With	Thickness
138-29079	Clear	Headgear	0.04 in
138-29090	Green-Dark	Jackson Safety Headgear	0.04 in
138-29091	Clear	Jackson Safety Headgear	0.047 in



## F50 Polycarbonate Special Face Shields

**Features:**

- Designed to provide protection against high heat applications, flying debris, and D3 rating chemical splash.
- IRUV filter additives in shade 3 and 5 provide additional infrared and ultraviolet radiation protection.
- Ideal in heavy manufacturing, high impact work areas, and anywhere that increased UVA/UVB/UVC protection is necessary.
- Protective eyewear should be worn under the face shield at all times.

**Binding:** Unbound

**Style:** D Shape

**Length:** 15.5 in

**Height:** 8 in

**Thickness:** 0.060 in



SKU	Lens Coating/Shade	Lens Material
138-26262	IRUV 3.0	Polycarbonate
138-29080	IRUV 5.0	Polycarbonate

## MAXVIEW™ Series Premium Face Shields with Headgear

**Features:**

- 370 Speed Dial™ ratcheting headgear system provides easy grab-easy turn adjustments for superior comfort and fit.
- Lightweight design for total comfort and all-day use, meets ANSI Z87.1+ and CSA.
- 2 inch larger window ensures maximum protection and panoramic view.
- Detents keep window firmly in the up or down position until manually adjusted.
- Framed side and chin area provide added protection.

**Length:** 13-1/4 in

**Height:** 9 in

**Thickness:** 0.04 in



SKU	Lens Coating/Shade	Lens Material
138-14200	Uncoated, Clear	Polycarbonate



## Headgear Brackets

### Features:

- Sturdy headgear brackets provide a durable and high-performance option for everyday work.
- Headgear brackets provide superior protection from liquid splashes and flying debris.
- Accepts most manufacturers' hard hats.

**Length:** 16 in

**Height:** 8 in



SKU
135-102

## Ratchet Take-Up Headgear

### Features:

- Take up a challenge, with durable and high-performance, take-up headgear.
- Sturdy headgear provides superior protection from liquid splashes and flying debris.
- Accepts most manufacturers' hard hats and most universally punched faceshields.



SKU
135-103

## Universal Faceshields

### Features:

- Superior face protection from dangerous liquid splashes and flying debris.
- Compatible with a variety of brackets and face shield sizes and materials.

**Height:** 10 in

**Thickness:** 0.04 in



SKU	Lens Coating/Shade	Lens Material	Length
135-101640	Uncoated	PETG	15.5 in
135-102040	Uncoated	PETG	20 in

## XO Skeleton Headgear with Molded Faceshield

### Features:

- Headgear with integrated one-piece molded faceshield provides thorough protection.
- Ensures superior face protection from dangerous liquid splashes and flying debris.
- Excellent optical quality for protection without sacrificing clear vision.

**Length:** 12-1/2 in

**Height:** 9 in

**Thickness:** 0.05 in



SKU	Lens Coating/Shade	Lens Material
135-104	Hard Coat	Polycarbonate



## DP4™ Series Multi-Purpose Faceshields

### Features:

- The shield curves naturally to fit facial contours; ensuring reliable protection from splash, particles, and flying debris.
- Rugged, polycarbonate shield is impact and splash resistant.

**Color:** Clear; SH5 Green

**Length:** 12.125 in

**Height:** 9 in

**Thickness:** 0.060 in



SKU	Lens Coating/Shade	Lens Material
851-S32151	Anti-Fog; Clear	Polycarbonate; UV/IR

## Hard Hat & Cap Parts & Accessories



AUTHORIZED DISTRIBUTOR

## High Performance® Hard Hat Faceshield Headgears

### Features:

- Made from Noryl®, the same material used in our welding helmets.
- Exceptionally lightweight and comfortable.
- Allows space for air circulation to prevent fogging.
- Accommodates a full selection of standard size windows.

**Material:** Noryl®

**Used With:** 4178CL; 4178DGN; 4178IRUV3; 4178IRUV5; 4199CL; 4199DGN; 4199IRUV3; 4199IRUV5; 4178IRUV8; 4178TVGY; S178; 4199GDTVGY; S199



SKU	Size	Suspension
280-F400	4 in Crown	Ratchet
280-F500	7 in Crown	Ratchet

## Quick-Lok® Adapter Kits

### Features:

- Provides more permanent mounting for longer term or high activity applications.
- Unique cup and block mounting system.
- Affixes visors and face shields to hard hats and caps.
- Easy to use, without tools.

**Material:** Plastic



SKU	Used With	Suspension
280-4000-H5	Fibre-Metal® Hard Hats and Caps	Quick-Lok®



AUTHORIZED  
DISTRIBUTOR

## Suspensions

### Features:

- Fibre-Metal® offers three headband adjustments for hard hat suspensions.
- Eight-point, tab-lock headband.
- Ratchet headband is strip proof and provides easy adjustment.
- SwingStrap™ combines the benefits of both the ratchet and the 360° padded sweatband with the added ability to convert from forward to reverse wearing position without having to remove and reinstall the suspension.

**Material:** Plastic; Web



SKU	Used With	Suspension
280-3RW2	E1/E2/P2 Series	8-point Ratchet



## Welding Helmet Cap Adapters

### Features:

- Quick detach brackets.
- Polyethylene spark deflector.
- For joining any visor and spark deflector with plastic pins to any cap equipped with #87 mounting blades.

**Material:** Plastic



SKU	Used With
138-15973	HLX, HSL Series or Nitro Welding Helmets; Attach to SC-6, Sentry III, Charger, SC-16, SB-6 Hard Hats



The Safety Company

## Fas-Trac® III Replacement Suspensions

### Features:

- Ratchet suspension and flush rear lug attachments eliminate pressure points for additional wearer comfort.
- Three levels of nape strap adjustment ensure a customized fit.
- Graspable ratchet with ultra-smooth rotation and steadfast hold.

**Material:** Plastic/Nylon



SKU	Used With	Suspension
454-10126693	MSA Skullgard® and Comfo-Cap® Helmets	4-Point Ratchet
454-10153385	MSA Skullgard® Helmets	4-Point Ratchet

## Hard Hats & Caps



AUTHORIZED  
DISTRIBUTOR

## SuperEight® E1 Hard Hats

### Features:

- Dissipates force on impact by reducing it to smaller increments and spreading it over a greater area.
- The exclusive smooth crown design contains a technically advanced suspension with eight load bearing points to stabilize and balance the hat or cap during everyday wear.

**Adjusting Method:** Ratchet

**Material:** Thermoplastic

**Size Group:** One Size Fits Most



SKU	Suspension
280-E1RW01A000	8-Point



## SC-6 Hard Hats

### Features:

- Smooth dome design leaves no crevice for build-up.
- Lightweight construction is ideal for extended use.
- Accessory slots for attaching additional personal protective equipment.
- Comes with fast absorbing brow pad for user convenience

**Adjusting Method:** Ratchet

**Material:** HDPE Blended Plastic

**Size Group:** 6-1/2 to 8



SKU	Color	Suspension
138-14833	Yellow	4-point Ratchet
138-14834	White	4-point Ratchet
138-14838	Blue	4-point Ratchet
138-14839	Orange	4-point Ratchet
138-14841	Red	4-point Ratchet
138-14842	Gray	4-point Ratchet





## Skullgard® Protective Caps and Hats



### Features:

- Strong, protective hats offer outstanding protection in hot, dangerous industries.
- Tested to radiant heat loads producing temperatures up to, but not exceeding, 350F.
- Smooth crown allows easy use of MSA welding equipment.
- Heavy duty construction produces a sturdy, reliable product for long-lasting use.

**Adjusting Method:** Ratchet

**Material:** Phenolic

**Size Group:** Standard; 6-1/2 to 8

SKU	Type	Suspension
454-475395	Cap	Fas-Trac Ratchet
454-475407	Hat	Fas-Trac® Ratchet

## Welder Caps & Doo Rags



## Series 2000 Reversible Caps



### Features:

- 6 panel, round crown, super soft brim reversible welders cap with custom print on 1 side and solid color on other.
- Cap measures approximately 7-1/4 inches from the top of the crown to the bottom of the cap.
- Caps are medium-crowned in order to cover welder's ears and neck, as well as round-crowned for that great look and fit.

**Material:** Cotton

**Color:** Assorted Prints

SKU	Size Group
118-2000E	One Size Fits Most
118-2000R-7	7
118-2000R-7-1/8	7-1/8
118-2000R-7-1/4	7-1/4
118-2000R-7-3/8	7-3/8
118-2000R-7-1/2	7-1/2
118-2000R-7-5/8	7-5/8
118-2000R-7-3/4	7-3/4



## Style 1000 Single Sided Caps

### Features:

- 6 panel, deep crown, super soft brim and single sided welders cap with our custom print.
- Cap measures 7-1/2 inches from the top of the crown to the bottom of the cap.
- Caps are medium-crowned in order to cover welder's ears and neck, as well as round-crowned for that great look and fit.

**Material:** Cotton

**Color:** Assorted Prints

SKU	Size Group
118-1000E-CAP	One Size Fits Most
118-1000-7-1/8	7-1/8
118-1000-7-1/4	7-1/4
118-1000-7-3/8	7-3/8
118-1000-7-1/2	7-1/2
118-1000-7-5/8	7-5/8
118-1000-7-3/4	7-3/4

## Welding Helmet Parts & Accessories



AUTHORIZED DISTRIBUTOR

## Custom-fit Replacement Headgear



### Features:

- Deeply offset, pliable headband fits head contours comfortably.
- Overhead band with multiple adjustments helps position the glassholder for the best view of the weld and a comfortable working position.
- Exclusive "free-floating" arms balance and stabilize the helmet while minimizing pressure points.
- Strip-proof ratchet head size adjustment provides small increment sizing.

**Suspension:** Ratchet

SKU	Used With	Adjustment Method	Type
280-1CP	Pipeliners Welding Helmet	Strap; Ratchet	Pipeliners
280-1CR	F300 Series	Ratchet	Pipeliners
280-3C	F400/F500 Series	Ratchet	Standard

**JACKSON**<sup>®</sup>

SAFETY

**170SB Headgear****Features:**

- Spark deflector for visor use without a safety cap.
- Fully dielectric.
- Secured with integral plastic lugs.
- Used in conjunction with protective eyewear, face shield provides a high degree of on-the-job protection for heat applications, as well as for grinding, flying debris and splash protection, among others.

**Adjustment Method:** 370 Speed Dial™**Suspension:** Ratchet**Style:** Partial Crown

SKU	Used With
138-14940	Mfr No. 29091, 29082, 29078, 29084, 29086, 29109, 29083, 29081, 29062
138-29077	Mfr No. 29091/29082/29078/29084/29086/29109/29083/29081/29062

**370™ Speed Dial Ratcheting Headgear Replacements****Features:**

- Oversized ratchet with soft rubber grip allows for easy adjustment when wearing gloves.
- Removable comfort cradle is a pivoting head pad that conforms to any head for the highest degree of comfort.
- 3-position slider adjusts distance of the lens from your eyes for precise vision.
- Crown strap adjustment allows the headgear to be raised or lowered for maximum comfort and performance.
- Sweatband helps absorb perspiration and prevents sweat from interfering with vision.
- Vertical lock-in eliminates helmet creeping.
- Lock-nut feature keeps the components together even when bracket is loosened.

**Adjustment Method:** Oversized Ratcheting Adjuster Knob**Suspension:** Ratchet**Style:** 370™ Speed Dial

SKU	Used With
138-20696	Halo X; HSL; Nitro; SmarTIGer; WH40

**HDG10 Face Shield Headgear****Features:**

- Has spark deflector.
- Soft, absorbent, wrap-around, foam cushioned sweatband gently hugs natural shape of head.

**Adjustment Method:** Increment - 1/16 in**Suspension:** Ratchet

SKU	Used With
138-14381	12 in or 15-1/2 in Face Shield

**JACKSON**<sup>®</sup>

SAFETY

**Welding Helmet Headgear****Features:**

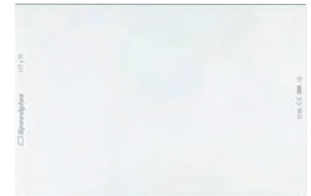
- Teeth are automatically disengaged during adjustment.
- Air-cushioned cloth sweatband is washable and durable.

**Adjustment Method:** Increment - 1/16 in**Suspension:** Ratchet

SKU	Used With
138-14556	900/800/400 Series Welding Helmets

**3M****3M™ Speedglas™ 9100XX Welding Helmet Inside Protection Plate 06-0200-30****Features:**

- Designed to protect the auto-darkening filter from spark and spatter.
- For use with Speedglas™ 9100 Series.

**Resistance:** Spark; Spatter**Window Size:** 2.8 x 4.2 in**Material:** Polycarbonate

SKU	Style	Lens Coating/ Shade
711-06-0200-30	Rectangular	Clear

**3M™ Speedglas™ 9100 Welding Helmet Outside Protection Plate 06-0200-51/37174****Features:**

- Designed for the professional welder.
- Choose from a variety of filters, lenses, and plates.

**Resistance:** Standard**Window Size:** 6.1 in x 3.8 in**Material:** Polycarbonate

SKU	Style	Lens Coating/ Shade
711-06-0200-51	Rectangular	Clear



## 3M™ Speedglas™ 9000 Welding Helmet Outside Protection Plate 04- 0270-01



### Features:

- Standard outside protection plate.
- Suitable for utility and all 9000 or 9002 series Speedglas™ welding helmets.

**Resistance:** Scratch

**Window Size:** 6 in x 3-3/4 in

**Material:** Polycarbonate

SKU	Style	Lens Coating/ Shade
711-04-0270-01	High Density	Clear



## Cover Lens

### Features:

- Meets all applicable specifications and standards.
- Resistant to abrasion, pitting, spatter, chemicals and solvents.

**Material:** 100% Polycarbonate

SKU	Lens Coating/ Shade	Window Size	Type
101-A-429	Clear	1-5/8 in x 3-9/16 in	Inside Cover Lens
101-PCC-24	Clear	2 in x 4-1/4 in	Outside Cover Lens



## Cover Lens

### Features:

- Convenient protective cover lens is resistant to abrasion, pitting, spatter, chemicals and solvents.
- Optically correct and balanced.
- Provides superior welding lens protection.

SKU	Lens Coating/ Shade	Window Size	Material
901-SP-1	Clear	2 in x 4-1/4 in	70% CR-39 Plastic
901-SP-2	Clear	2 in x 4-1/4 in	100% CR-39 Plastic
901-SP-35	Clear	4-1/2 in x 5-1/4 in	50% CR-39 Plastic
901-SP-45	Clear	5-1/4 in x 4-1/2 in	CR-39 Plastic



## Glass Filter Plates

### Features:

- Best Welds filter plates offer ultimate protection against ultraviolet and infrared rays present in the welding environment.
- Precision ground and edged to allow a safe and proper fit.
- Precisely shaded and optically correct.

**Resistance:** Heat treated, but not unbreakable. It is not a safety lens.

**Material:** Hardened Glass

**Color:** Green



SKU	Lens Coating/ Shade	Window Size
901-932-105-9	9	2 x 4-1/4 in
901-932-105-10	10	2 x 4-1/4 in
901-932-105-11	11	2 x 4-1/4 in
901-932-105-12	12	2 x 4-1/4 in
901-932-107-9	9	4-1/2 x 5-1/4 in
901-932-107-10	10	4-1/2 x 5-1/4 in
901-932-107-11	11	4-1/2 x 5-1/4 in
901-932-107-12	12	4-1/2 x 5-1/4 in

## Glass Magnifier Plate

### Features:

- Magnify like magic with a sturdy glass magnifier plate that provides optically balanced magnification.
- Allows users to see work-piece clearly.
- Long-lasting.

**Style:** Rectangular



SKU	Lens Coating/ Shade	Window Size	Diopter Strength
901-932-145-150	Clear	2 in x 4-1/4 in	1.5
901-932-145-175	Clear	2 in x 4-1/4 in	1.75
901-932-145-200	Clear	2 in x 4-1/4 in	2
901-932-145-250	Clear	2 in x 4-1/4 in	2.5
901-932-145-300	Clear	2 in x 4-1/4 in	3

## Gold Coated Filter Plate

### Features:

- Gold coated filter plate reflects harmful infrared rays while staying cooler than a conventional green filter plate.
- Precisely shaded and optically correct.
- Light-weight and impact-resistant.

**Resistance:** Impact Resistant

**Material:** Polycarbonate

**Style:** Rectangular



SKU	Lens Coating/ Shade	Window Size
901-932-109-10	Gold/10	2 in x 4-1/4 in
901-932-110-10	Gold/10	4-1/2 x 5-1/4 in



## Hardened Glass Gold Filter Plate

### Features:

- Strong glass plates with gold coloring reflect harmful infrared rays while staying cooler than a conventional green filter plate.
- Precisely shaded and optically correct.
- Precision ground and edged to allow a safe and proper fit.

**Resistance:** IR Emissions

**Material:** Glass

**Style:** Rectangular



SKU	Lens Coating/ Shade	Window Size
901-932-248-10	Gold/10	2 in x 4-1/4 in
901-932-248-11	Gold/11	2 in x 4-1/4 in
901-932-248-12	Gold/12	2 in x 4.25 in
901-932-248-9	Gold/9	2 in x 4.25 in
901-932-458-10	Gold/10	4-1/2 in x 5-1/4 in
901-932-458-11	Gold/11	4.5 in x 5.25 in

## Plastic Magnifier Plate

### Features:

- Powerful plastic magnifier plate works to provide optically balanced magnification.
- Allows users to see work-piece clearly.
- Light-weight and impact-resistant for durability and strength.

**Resistance:** Impact Resistant

**Material:** Polycarbonate

**Style:** Rectangular



SKU	Lens Coating/ Shade	Window Size	Diopter Strength
901-932-146-100	Clear	2 in x 4.25 in	1
901-932-146-125	Clear	2 in x 4.25 in	1.25
901-932-146-150	Clear	2 in x 4-1/4 in	1.5
901-932-146-175	Clear	2 in x 4.25 in	1.75
901-932-146-200	Clear	2 in x 4-1/4 in	2
901-932-146-225	Clear	2 in x 4.25 in	2.25
901-932-146-250	Clear	2 in x 4-1/4 in	2.5

## Safety Plate

### Features:

- Safety plate provides strong impact resistance for added safety.
- Optically correct and balanced.
- Light-weight.

**Resistance:** Impact Resistant

**Material:** Polycarbonate

**Style:** Rectangular



SKU	Lens Coating/ Shade	Window Size
901-932-440	Clear	2 in x 4-1/4 in
901-932-442	Clear	4-1/2 in x 5-1/4 in



## TrueSight II Lens & Cartridges

### Features:

- Amber band pass for enhanced clarity of weld puddle.
- Built-in magnification lens.
- Four independent sensors positioned to reduce possibility of blockage during weld.
- Large, separate buttons with LED indicator for Weld, Torch and Grind modes.
- Low battery indicator.
- No retainer for easy helmet installation and removal.

**Window Size:** 5-1/4 in x 4-1/2 in

**Material:** Polycarbonate



SKU	Lens Coating/ Shade
138-30320	Clear
138-30321	Clear

## W60 NEXGEN Digital Auto-Darkening Filters

### Features:

- Digital controls feature variable shade, sensitivity and delay adjustments.
- Four independent sensors positioned to reduce possibility of blockage during weld.
- Versatile 3-N-1 built-in function: Weld, Torch, Grind.
- Amber view lens allows for enhanced clarity of weld puddle.
- Built-in mag lens holder.

**Window Size:** 3.80 in x 2.35 in

**Type:** EQC Cartridge



SKU	Lens Coating/ Shade
138-16622	9 to 12

## WH40 Insight Internal Cover Lenses

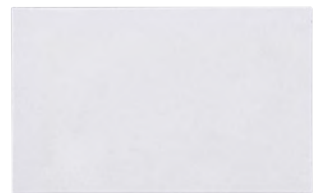
### Features:

- Sturdy internal cover lens made with durable polycarbonate construction.
- Scratch-resistant for long-lasting service.
- Lightweight for comfortable use.

**Window Size:** 6-1/2 in x 7-1/2 in

**Material:** Polycarbonate

**Color:** Clear



SKU	Style	Lens Coating/ Shade
138-41594	Cover Lens	Clear





## Weldcap® Front Cover Lens

### Features:

- Easily replaceable front cover lenses eliminate long, complicated replacement processes.
- Strong, impact-resistant lenses.

**Window Size:** 7-1/4 in x 4-1/4 in

**Material:** Polycarbonate



SKU	Style	Lens Coating/ Shade
808-5000.212	Curved	Clear



## 3M™ Adflo™ Turbo Assembly 35-5401-01

### Features:

- Includes blower unit, breathing tube, flow indicator, leather belt, spark arrestor, filter cover, prefilter, HE particulate filter, lithium ion battery, and charger (Headgear not included).

**Battery Life:** PAPR: up to 12 hours



SKU	Used With
711-35-5401-01	Speedglas™ Filters 9000 and L-Series



AUTHORIZED DISTRIBUTOR

## Lens Gasket for Welding Helmets

### Features:

- Ideal for extending the life of your welding helmet.
- This is the piece that goes between the cover plate and the filter plate.

**Material:** Plastic



SKU	Used With
280-1170	606; 610; 670; 676; 706; 710; 713; 910; 913; 110; 110P; 1096; 1166; 1169

## Quick-Lok Welding Helmet Parts and Accessories

### Features:

- Quick-Lok adapter kit.
- For use with Fibre-Metal smooth dome cap style hard hats.
- Allows quick and easy adaptability of welding helmets and faceshields to fibre-metal hard hats.

**Length:** 2.2 in

**Width:** 2.57 in

**Material:** Nylon; Plastic; Metal



SKU	Used With
280-FM4001	Mates with 4002



AUTHORIZED DISTRIBUTOR

## Retainer Springs

### Features:

- Durable retainer springs come in a variety of sizes.
- For welding lenses.

**Material:** Plastic



SKU	Used With
280-9101-H5	Plastic Lens 2 x 4-1/4 in

## Speedy-Loop™ Mounting Systems

### Features:

- Easy on/off system for mounting welding helmets onto protective caps.
- Fully adjustable.

**Material:** Plastic

**Size:** Adjustable



SKU	Used With
280-5000-H5	Fibre-Metal Protective Caps



## HSL 100 Welding Helmet Parts

### Features:

- Retainer lens clip adds another layer of safety between you and the task at hand.
- Holds lens assembly firmly in place.
- Easy-to-replace components.

**Length:** 6-3/4 in

**Width:** 5-1/8 in

**Material:** Polycarbonate



SKU	Used With
138-15977	Jackson HSL-100 with NexGen Autodark Lens and HLX-100 Welding Helmet Shells

## Welding Helmets

3M

3M™ Speedglas™ Welding  
Helmet 9100 06-0100-20SW

## Features:

- All new headgear makes this helmet extremely comfortable and versatile.
- Sensitivity adjustment allows use with all Stick, MIG and TIG processes.
- Also has grinding and torch cutting modes.

Window Size: 4.2 in x 2.1 in

Material: PPA

SKU	Lens Coating/Shade	Suspension
711-06-0100-20SW	8 to 13; Shade 5	Ratchet

3M™ Speedglas™ Welding  
Helmet 9100, 06-0100-30iSW

## Features:

- Includes 9100XXi Auto-Darkening Filter that allows better color recognition.
- Ergonomic adjustable head suspension provides increased comfort, helmet stability and weight distribution.
- Helmet can be used for Stick, MIG, and TIG welding processes.

Window Size: 2.8 in x 4.2 in

Material: High-Density Polyethylene

SKU	Lens Coating/Shade	Suspension
711-06-0100-30iSW	5; 8 to 13; Shade 3 Light State	Ratchet

3M™ Speedglas™ Heavy-Duty  
Welding Helmet G5-01 with  
ADF G5-01VC and 3M™ Adflo™  
High-Altitude PAPR Assembly, 46-1101-30iVC

## Features:

- Protection against radiation, sparks and spatter, from a high-coverage welding helmet design that also offers expanded coverage options.
- View your work with 3M™ Speedglas™ Natural Color Technology – now available with variable color option in the dark state.
- Effective respiratory protection, with options to provide the highest exposure reduction available in a powered air respiratory system (APF 1000).
- Individualize your helmet with different accessory configurations, while you use the new helmet controls to adjust the respiratory airflow to your preferences.

Window Size: 2.8 in x 4.3 in

Material: Polyphthalamide

SKU	Lens Coating/Shade	Suspension
711-46-1101-30iVC	Shade 5; 8 to 14	Adjustable

Honeywell  
FIBRE METAL®AUTHORIZED  
DISTRIBUTOR

## Pipeliner™ Welding Helmets



## Features:

- Compact design allows access to areas where there is no room for a standard helmet.
- Comfortable, functional headgear uses a constant-fit rubber headband for frequent re-adjustments as pipe welders move about their work.

Window Size: 2 in x 4-1/4 in

SKU	Lens Coating/Shade	Material	Suspension
280-110-WH	#10	Thermoplastic	I-CR Ratchet Headgear
280-110PWE	#10	Fiberglass	Rubber Headband

Tigerhood™ Classic Protective  
Cap Welding Helmet Shells

## Features:

- Unique welding helmet design provides extended throat protection while blocking fumes and smoke from the face.
- Molded-in colors eliminate chipping, peeling, fading.
- Smooth, seamless shell deflects sparks and spatter reducing the risk of burn through.
- Available in a variety of colors.

Window Size: 2 in x 4-1/4 in

Material: Thermoplastic

SKU	Lens Coating/Shade
280-4906GY	SH10
280-5906GY	#10

Tigerhood™ Classic Welding  
Helmets

## Features:

- Unique welding helmet design provides extended throat protection while blocking fumes and smoke from the face.
- Molded-in colors eliminate chipping, peeling, and fading.
- Smooth, seamless shell deflects sparks and spatter reducing the risk of burn through.

Window Size: 2 in x 4-1/4 in

Size of Cartridge: 2 in x 4-1/4 in

Material: Thermoplastic

Suspension: 3-C Ratchet

SKU	Lens Coating/Shade	Color
280-906BK	#10	Black
280-906GY	#10	Gray
280-910GY	#10	Gray



## 280PL Lift Front Welding Helmets



### Features:

- Spring-loaded lift front provides added flexibility by eliminating the need to raise the hood during pre/post preparation work.
- Patented 370 Speed Dial® ratcheting headgear achieves a perfect fit and creates the ultimate balance in comfort and functionality.
- Super Tuff nylon material provides a lightweight yet durable design and performs in the harshest welding extremes.
- Patented lens retention system provides effortless loading of filter, cover, and protective plates.

**Window Size:** 2 in x 4-1/4 in

**Material:** Thermoplastic

SKU	Lens Coating/Shade
138-14321	SH10

## Front Lift Welding Helmets



### Features:

- Spring-loaded lift front provides added flexibility by eliminating the need to raise the hood during pre/post preparation work.
- Patented 370 Speed Dial® ratcheting headgear achieves a perfect fit and creates the ultimate balance in comfort and functionality.
- Super Tuff nylon material provides a lightweight yet durable design and performs in the harshest welding extremes.
- Patented lens retention system provides effortless loading of filter, cover, and protective plates.
- Exclusive Super Kool coating sheds spatter and reduces heat buildup found in traditional helmets (Model 14311).

**Window Size:** 2 in x 4-1/4 in

**Material:** Nylon

**Suspension:** 370 Speed Dial® Ratcheting Headgear

SKU	Lens Coating/Shade	Color
138-14301	10IR	Black
138-14311	10IR	Silver

## Graphic Premium Auto-Darkening Welding Helmets



### Features:

- Bold new graphics keep you looking sharp while performing at your best.
- Features exclusive 370™ Speed Dial ratcheting headgear system.
- Ergonomically balanced to reduce stress and fatigue.
- Powered by solar technology and one CR2032 replaceable lithium battery.

**Window Size:** 3.94 in x 2.36 in

**Size of Cartridge:** 5.25 in x 4.5 in

**Material:** Nylon

**Suspension:** Ratchet

SKU	Lens Coating/Shade
138-47103	4/5 to 13



## Insight Digital Variable ADF Welding Helmets



### Features:

- Variable shades to shield and protect eyes from radiant energy during weld.
- Viewing area offers unobstructed views during all stages of welding process without lifting hood.
- Sensitivity and delay adjustments for different tasks and duration.
- Weld and grind modes.
- Four independent sensors reduce blockage possibility.
- Operates with lithium battery power.
- Low-battery indicator light.

**Window Size:** 3.93 in x 2.36 in

**Material:** Thermoplastic

**Suspension:** Ratchet

SKU	Lens Coating/Shade	Size of Cartridge	Used With
138-46129	9 to 13	5.25 in x 4.5 in	HSL 100 shell; Lithium batteries; #40710 - ADF; #46128 - ADF Cartridge; #41594 - Safety Plate; #41589 - Plate Kit; #20696 - Headgear
138-46131	SH9 to SH13	5-1/4 in x 4-1/2 in	HLX100 and HSL100 shells

## NexGen Digital Variable ADF Welding Helmets



### Features:

- Features versatile 3-N-1 function: Weld, Torch, Grind.
- Easy to use digital controls.
- Patented circuit design allows unit to detect weld less than 5 amps, ideal for low-amp TIG welding.
- Amber view lens allows for enhanced clarity of weld puddle and can help reduce eye strain.

**Window Size:** 3.8 in x 2.35 in

**Size of Cartridge:** 4.53 in x 5.3 in

**Suspension:** Ratchet

**Used With:** HLX 100 Shell

SKU	Lens Coating/Shade
138-46148	SH9 to SH13

**JACKSON**  
SAFETY

## TrueSight II Digital Variable ADF Welding Helmets

**Features:**

- Get a true view on the situation with TrueSight II welding helmets with Balder Technology that feature best in class optical clarity.
- 3-in-1 helmets feature weld, grind and torch modes.
- Includes four independent sensors positioned to reduce possibility of blockage during weld.
- Sensitivity and delay adjustments for different tasks and durations.
- Operates on two, easy-to-replace AAA batteries (included) with low battery indicator.
- Intuitive digital control panel.
- Built-in magnification lens holder.
- No retainer for easy helmet installation and removal.

**Window Size:** 3.25 in x 4 in**Material:** Thermoplastic**Used With:** External Safety Lens (30320); Internal Safety Lens (30321); ADF Cartridge (46158); 370 Replacement Headgear - Premium (20696)

SKU	Lens Coating/Shade	Suspension
138-46159	SH5 to SH8; SH9 To SH13	370 Ratchet Headgear

## WH10 951P Passive Welding Helmet

**Features:**

- Lightweight, durable, washable thermoplastic shell.
- ADF adaptable (AV1005VXL only).

**Window Size:** 4-1/2 in x 5-1/4 in**Material:** Nylon

SKU	Lens Coating/Shade	Suspension
138-14535	SH10	117A Headgear

## WH10 HSL 100 Passive Welding Helmets

**Features:**

- Narrow shell design is perfect for work in tight spaces.
- Extended front increases throat protection from sparks, slag and other physical hazards.
- Hard hat adaptable using 187-S (15968).
- ADF adaptable.

**Window Size:** 4-1/2 in x 5-1/4 in**Material:** Polycarbonate/ABS Blend

SKU	Lens Coating/Shade	Suspension
138-14975	Green; #10	Ratchet Headgear
138-15134	Green; #10	370 Headgear

**JACKSON**  
SAFETY

## WH10 HSL 2 Passive Welding Helmets

**Features:**

- Extended front increases throat protection against sparks, slag and other physical hazards.
- Hard hat adaptable using 187-S (15968).
- Narrow shell design is perfect for work in tight spaces.

**Window Size:** 2 in x 4-1/4 in**Material:** Polycarbonate/ABS Blend

SKU	Lens Coating/Shade	Suspension
138-14982	SH10	370 Headgear

## WH20 430P Fiber Shell Welding Helmet

**Features:**

- Lightweight, vulcanized fiber shell for comfortable, cool, heavy-duty welding.
- Made of 10% recycled fiber content.
- Not suited for damp environments or overhead welding.
- Lift front provides flexibility so user does not have to raise hood.

**Window Size:** 2 in x 4-1/4 in**Material:** Vulcanized Fiber

SKU	Lens Coating/Shade	Suspension
138-14528	SH10	117A Headgear

## WH20 860P Leather Welding Helmet

**Features:**

- Features a tough yet pliable leather covering.
- Ideal for use in overhead welding applications or when working in tight spaces.

**Window Size:** 2 in x 4-1/4 in**Material:** Leather

SKU	Lens Coating/Shade	Suspension
138-14531	SH10	117A Headgear





## Advantage Plus Series ADF Welding Helmets

### Features:

- Lightweight design is ideal for extended use.
- Features 4 arc sensors.
- Easy auto darkening filter and cover plate installation.
- Internal controls for maximum protection.
- Comfortable push and twist ratcheting head gear adjustment.
- Comes complete with grind mode/grinding warning.
- Design allows use of magnifier plate.
- Solar and battery operated, includes low battery warning.

**Window Size:** 3.94 in x 2.36 in; Filter 5.25 in x 4.5 in

**Size of Cartridge:** 5.25 in x 4.5 in

**Material:** Nylon



SKU	Lens Coating/Shade	Suspension
851-S26200	9 to 13	Ratchet Headgear

## Advantage Series ADF Welding Helmets

### Features:

- Lightweight design is ideal for extended use.
- Features 2 independent arc sensors.
- Adjustable sensitivity and delay controls.
- Offers excellent head and neck protection.
- Comes complete with grind mode.
- Design allows use of magnifier plate.
- Solar operated.

**Window Size:** 3.54 in x 1.57 in; Filter 4.33 in x 3.54 in

**Size of Cartridge:** 4.33 in x 3.54 in

**Material:** Nylon

**Suspension:** Push and Twist Ratcheting Headgear



SKU	Lens Coating/Shade
851-S26100	9 to 13

## HEAT STRESS PROTECTION

### Activity Drinks



## G Series O2 Perform® Thirst Quencher Instant Powders

### Features:

- Hydrates with electrolytes that help them replace the carbs, electrolytes and fluids they lose when they sweat.
- Carbohydrates help stimulate rapid fluid absorption and fuel the active body.

**Flavor:** Fruit Punch; Lemon-Lime; Orange; Frost Riptide Rush

**Quantity:** 32 EA/CA



SKU	Package Yield	Capacity Vol.
308-03944	2.5 gal	21 oz



## Qwik Stik® ZERO Sugar

### Features:

- Great-tasting sugar-free electrolyte replacement.
- Ideal for diabetics and carb-conscious consumers.

**Flavor:** ZERO Sugar Fruit Punch; ZERO Sugar Mixed Berry; ZERO Sugar Orange; ZERO Sugar Strawberry Lemonade

**Quantity:** 200 per case



SKU	Package Yield	Capacity Vol.
690-159060119	20 oz	0.11 oz

## Squeeze® Freezer Pops

### Features:

- Great way to cool down the body during hot or fatiguing work situations.
- Just freeze and serve to administer a tasty way to provide electrolytes to any work crew.
- Formulated to be absorbed significantly faster than water, allowing the body to replenish electrolytes and minerals for proper hydration.

**Flavor:** Cherry; Grape; Lemon-Lime; Mixed Berry; Orange

**Quantity:** 10 Tubes Per Pack



SKU	Package Yield	Capacity Vol.
690-159200201	3 oz	3 oz

## Sweat Bands



## Headgear Sweatbands

## Features:

- Individually packaged.
- Hook & loop closure allows the fit onto most major brand headgear.
- Sweat absorbent air cushioned layer lined with 100% fleece cotton.

**Used With:** Suspension Headgear

**Strap Type:** Hook and Loop



SKU	Material
101-SB320V	Fleece Cotton

## Leather Sweatbands

## Features:

- Individually packaged.
- Snaps on any headgear.
- Absorbent air cushioned layer lined with 100% fleece cotton.

**Used With:** Headgear



SKU	Material
101-SB700	Cowhide



## Headgear Sweatbands

## Features:

- Air cushioned, sweat absorbing layer surrounded by 100% fleecy cotton cover.
- Flame retardant for industrial use.
- Hook & loop closure allows the fit onto most major brand headgear.

**Used With:** Non-Suspension Headgear



SKU	Material
902-SB310V	FR Fleece Cotton

## RESPIRATORY PROTECTION

## Cartridge Respirator Parts &amp; Accessories



## 3M™ 2000 Series Particulate Filters

## Features:

- Lightweight and easy to breathe through.
- Bayonet compatibility allows use with many 3M™ half and full facepieces and certain 3M™ Scott™ full facepieces.
- Assortment of filters available for a wide range of applications.

**Filtration Grade:** P100

SKU	For Model	Resistance
142-2091	3M™ Cartridges 6000 Series; Reusable Respirators	Oil and Non-Oil Based Particles
142-2097	3M™ Cartridges 6000 Series; Reusable Respirators	Nuisance Level Organic Vapor

## 3M™ Organic Vapor Cartridge 6001

## Features:

- Swept-back design allows an enhanced field of view and comfort.
- Bayonet compatibility allows use with many 3M™ Half and Full Facepiece Respirators.
- Wide range of applications reduces inventory needs.
- Simple installation and usage requirements reduces training requirements.



SKU	For Model
142-6001	3M™ Half/Full Facepieces 6000, 6500, 7000, 7500, 7800S, and FF-400 Series with bayonet filter holders

## 3M™ Adflo™ PAPR High Efficiency Particulate Filter 15-0299-99X20

## Features:

- Convenient particulate filters are designed for use with 3M™ Adflo™ PAPR breathing systems.
- They provide respiratory protection in a wide range of applications.
- Quick and easy to replace.



SKU
711-15-0299-99X20

## Cartridge Respirators



### 3M™ Full Facepiece Reusable Respirator 6800

**Features:**

- Unique center adapter directs exhaled breath and moisture downward, and helps reduce debris from depositing in the valve.
- Smooth surface allows for quick and easy cleaning.
- Large lens provides a wide field of view and excellent visibility.
- 3M™ Cool Flow™ Valve provides cool, dry comfort.
- Lightweight well-balanced design and silicone face seal for enhanced comfort and durability.

**Body Material:** Silicone; Thermoplastic Elastomer



SKU	Protected Area	Size Group
142-6800	Full Facepiece	Medium
142-6900	Full Facepiece	Large

### 3M™ Half Facepiece Reusable Respirator

**Features:**

- Half facepiece drop down.
- Used with 2000, 6000 and 7000 Series filters and cartridges.
- Remarkably comfortable with soft, lightweight facepiece and the easy-to-adjust head straps.
- Reusable.
- Just dispose of the cartridges/filters when used to capacity.

**Body Material:** TPE



SKU	Protected Area	Size Group
142-6200	Half Facepiece	Medium
142-6300	Half Facepiece	Large

## Disposable Respirator Parts & Accessories



AUTHORIZED DISTRIBUTOR

### 7600 Series Full Facepiece With Welding Attachment



**Features:**

- Soft, flexible 100% silicone facepiece provides workers with a comfortable and secure fit.
- Wide sealing area fits more facial types.
- Nose cup provides less dead air space and channels exhaled breath out.
- Speech diaphragm is standard to amplify workers' conversations.
- Wide panoramic lens provides optimal field of vision in all directions.
- Polycarbonate lens meets ANSI requirements for high impact.
- Can be adapted to PAPR or Supplied Air for greater flexibility in the workplace.

**Size Group:** M/L

**Suspension:** Hook-and-Loop (5-Point)

**Includes:** Nose Cup; Welding Attachment

SKU
068-760008AW

## Disposable Respirators



### 3M™ Particulate Respirators



**Features:**

- Two-strap design with single point attachment helps provide a secure fit.
- Adjustable noseclip reduces eyewear fogging and helps ensure a better fit and seal.
- Lightweight construction enhances worker comfort and wear time.
- Patented filter media with advanced electrostatically charged microfibers help make breathing easier and cooler for enhanced user comfort.

**Size Group:** One Size

**Protected Area:** Half Facepiece

SKU	Filtration Grade	Quantity	Includes
142-8210	N95	20/bx	Adjustable Noseclip
142-8511	N95	10/bx	3M™ Cool Flow™ Valve; M Noseclip



## 3M™ Particulate Welding Respirators



**Features:**

- Disposable respirator features electrostatically charged microfibers designed for ease of breathing.
- Protective layers of welding web are flame resistant.
- Cool Flow™ exhalation valve reduces heat build up to keep the wearer more comfortable.
- Cake-resistance carbon filter material provides longer respirator life.
- Two straps provide a custom and secure fit.

**Filtration Grade:** N95

**Size Group:** One Size

SKU	Protected Area	Suspension	Includes
142-8212	Half Facepiece with Faceseal	Adjustable Buckle Straps	3M™ Cool Flow™ Valve; Carbon Filter Material; N100 Required; Welding Web
142-8214	Half Facepiece with Faceseal	Adjustable Buckle Straps	3M™ Cool Flow™ Valve; Carbon Filter Material; OV Reduction; Welding Web
142-8515	Half Facepiece with Adjustable Nose Clip	Stapled; Braided Head Band Straps	3M™ Cool Flow™ Valve; Carbon Filter Material; Welding Web



AUTHORIZED DISTRIBUTOR

## 7600 Series Full Facepiece With Welding Attachment



**Features:**

- Soft, flexible 100% silicone facepiece provides workers with a comfortable and secure fit.
- Wide sealing area fits more facial types.
- Nose cup provides less dead air space and channels exhaled breath out.
- Speech diaphragm is standard to amplify workers' conversations.
- Wide panoramic lens provides optimal field of vision in all directions.
- Polycarbonate lens meets ANSI requirements for high impact.
- Can be adapted to PAPR or Supplied Air for greater flexibility in the workplace.

**Size Group:** M/L

**Suspension:** Hook-and-Loop (5-Point)

**Includes:** Nose Cup; Welding Attachment

SKU
068-760008AW

## Powered Air & Supplied Air System Parts & Accessories



## 3M™ Adflo™ Powered Air Purifying Respirator Battery 35-1099-07



**Features:**

- Battery life up to 12 hours.
- Charges to 80% capacity in approximately 3 hours and to 100% capacity in approximately 6.5 hours.

SKU	Used With
711-35-1099-07	Adflo™ PAPRs

## ARC GOUGING

### Arc Gouging Electrodes



## DC Pointed Copperclad® Gouging Electrodes



**Features:**

- A high grade, all-purpose copperclad pointed gouging electrode.
- Controlled copper coating improves electrical conductivity (for more efficient, cooler operation) and helps maintain electrode diameter at the point of the arc.
- Contains a precise formulated blend of carbon and graphite.

**Dia.:** 1/4 in

**Length:** 12 in

**Model Type:** DC; DCEP Operating Polarity; Pointed

SKU	Amps	Coating
358-2204-3003	300 A - 400 A	Copper



## DC Copperclad Gouging Electrodes



**Features:**

- Full synthetic graphite.
- Superb arc starting and stability.

**Length:** 12 in

**Model Type:** Pointed

SKU	Amps	Coating	Dia.
900-22-033-003X	200 A - 250 A	Copper	3/16 in
900-22-043-003X	300 A - 400 A	Copper	1/4 in
900-22-053-003X	350 A - 450 A	Copper	5/16 in
900-22-063-003X	450 A - 600 A	Copper	3/8 in



## Arc Gouging Torches & Cables



### Arc Gouging Torches With Cables

**Features:**

- Sturdy gouging torch with cable is made with durable construction.
- Fully interchangeable with other gouging torch brands.
- Heavy duty construction, yet lightweight for everyday usage.

**Cable Length:** 7 ft



SKU
900-GT61-082-008

## FILLER METALS

### MIG Welding Wires



### ER308L MIG Welding Wires

**Features:**

- Used for welding types 304, 304L, 308 and 308L stainless steels.
- Very similar to type 308 but has a carbon content held to a max of 0.03% to avoid carbide precipitation.

**Dia.:** 0.030 in



SKU	Tensile Strength	Material
900-308L030X10	84 kpsi	Stainless Steel

### ER4043 MIG Welding Wires

**Features:**

- One of the oldest and most widely used welding and brazing alloys.
- Contains silicon additives, which result in improved fluidity (wetting action) of the weld pool.
- Also produces a weld less sensitive to cracking.
- Can be used to weld various grades of aluminum.

**Dia.:** 0.035 in



SKU	Tensile Strength	Material
900-4043-035X1	29 kpsi	Aluminum; Aluminum Alloy



### ER70S-6 MIG Premium Welding Wires

**Features:**

- Mild steel welding wire that contains high levels of manganese and silicon which produces high quality welds when used on dirty, oily or rusty steel.
- The high silicon content increases the fluidity of the weld pool, creating a smoother bead appearance resulting in minimal post-weld grinding.
- Engineered to provide porosity-free, x-ray quality welds at the highest tensile strength of all the plain carbon steel wires.



SKU	Tensile Strength	Material	Dia.	Wt.
900-70S6035X33S	85,000 psi	Carbon Steel	0.035 in	33 lb
900-70S6035X44S	85,000 psi	Carbon Steel	0.035 in	44 lb
900-70S6045X44S	85,000 psi	Carbon Steel	0.045 in	44 lb

### ER70S-6 MIG Welding Wires

**Features:**

- High quality welds when used on dirty, oily, or rusty steel.
- Creates a smooth bead appearance resulting in minimal post-weld grinding.
- Provides porosity free, x-ray quality weld.



SKU	Tensile Strength	Material	Dia.	Wt.
900-70S6023x11	550 MPa	Carbon Steel	0.023 in	11 lb
900-70S6030x11	550 MPa	Carbon Steel	0.030 in	11 lb
900-70S6035x11	550 MPa	Carbon Steel	0.035 in	11 lb
900-70S6035X33-PLT	550 MPa	Carbon Steel	0.035 in	2,376 lb
900-70S6035X33-BOX	550 MPa	Carbon Steel	0.035 in	33 lb
900-70S6035X44-PLT	550 MPa	Carbon Steel	0.035 in	2,640 lb
900-70S6045X44-PLT	550 MPa	Carbon Steel	0.045 in	2,640 lb



### SuperArc® L-56® MIG Wires

**Features:**

- High levels of manganese and silicon deoxidizers tolerate medium to heavy mill scale surfaces.
- Excellent toe-wetting provides optimal bead appearance.
- Supports short-circuiting, globular, axial spray and pulsed spray transfer.

**Material:** Copper Coated Mild Steel



SKU	Tensile Strength	Dia.
897-ED021274	380 to 485 MPa (55 to 70 ksi)	0.035 in
897-ED021276	380 to 485 MPa (55 to 70 ksi)	0.045 in
897-ED032906	380 to 485 MPa (55 to 70 ksi)	0.045 in
897-ED032904	380 to 485 MPa (55 to 70 ksi)	0.035 in
897-ED032927	380 to 485 MPa (55 to 70 ksi)	0.035 in



## SuperArc® L-59® MIG Wires



### Features:

- A copper coated, mild steel, engineered alloy MIG wire for arc performance, wire feedability and consistency, as well as extending contact tip life.
- Engineered alloy system enhances silicon island management.
- MicroGuard® Ultra provides superior feeding and arc stability.

**Dia.:** 0.045 in

SKU	Material
897-ED034271	Copper Coated Mild Steel

## TIG Welding Wires



## ER308L TIG Welding Rods



### Features:

- Used for welding types 304, 304L, 308 and 308L stainless steels.
- Very similar to type 308 but has a carbon content held to a max of 0.03% to avoid carbide precipitation.

**Dia.:** 1/8 in

**Wt.:** 10 lb

SKU	Tensile Strength	Material
900-308L18X36x10	84 kpsi	Stainless Steel

## Welding Stick Electrodes



## Mild Steel Electrodes



### Features:

- Excellent arc starting and stability.
- For best performance, store in rod oven at recommended temperature.

**Material:** Carbon Steel

**Length:** 14 in

SKU	Type
900-6011-532X50	E6011
900-6011-18X5	E6011
900-6011-18X50	E6011
900-7018-18X5	E7018
900-7018-18X50	E7018
900-7018-332X5	E7018
900-7018-332X50	E7018



## Excalibur® 7018 MR® Stick Electrodes



### Features:

- Designed for welding mild steel, low alloy steels and steels of poor weldability.
- Ability to tie-in to side walls without undercutting, especially for critical out-of-position applications.
- Clean weld puddle and uniform slag follow make it easy for the welder to see and carry the puddle.

**Material:** Low Hydrogen Mild Steel

**Length:** 14 in

**Type:** SMAW

SKU
897-ED028280
897-ED028282
897-ED032589
897-ED028281
897-ED032588
897-ED028283
897-ED032590

## Excalibur® 7018-1 MR® Stick Electrodes



### Features:

- Exceeds AWS toughness requirements at -50°F.
- Extreme bend ability.
- Moisture pick-up resistant.
- Clear puddle and a smooth arc.

**Material:** Low Hydrogen Mild Steel

**Length:** 14 in

**Type:** SMAW

SKU
897-ED028702

## Welding/Brazing Alloys & Fluxes



## E71T-GS Flux Cored Welding Wires



### Features:

- All position, single pass, flux cored welding wire designed to weld carbon steel.
- Shielding gas is not required.
- Produces smooth arc action, low spatter, full slag coverage, and easy slag removal.

**Tensile Strength:** 70,000 psi

SKU	Material	Dia.	Wt.
900-71TGS030X10	E71T-GS Alloy	0.030 in	10 lb
900-71TGS030X2	E71T-GS Alloy	0.030 in	2 lb
900-71TGS035X10	E71T-GS Alloy	0.035 in	10 lb
900-71TGS035X2	E71T-GS Alloy	0.035 in	2 lb

## GAS CUTTING & WELDING

### Flash Arrestors



### Flashback Arrestor Components



#### Features:

- Color-coded for gas service to provide added safety.
- Internal check valves designed to prevent reverse flow and accidental mixing of oxygen and fuel gases.
- Torch and regulator models provide downstream and upstream protection.
- 10 in maximum cutting capacity.
- For stopping flashbacks by preventing ignition of mixed gases and to protect equipment such as hoses, regulators, and cylinders.

**Gas Type:** Fuel Gas; Oxygen

**Thread - TPI or Pitch:** 9/16 in to 18 TPI

SKU	Style	Used With
312-FA-10	Torch Style	FA-200P Fuel Gas; FA-100P Oxygen
312-FA-30	Regulator Adaptor	FA-230P Fuel Gas; FA-130P Oxygen

### Outfits



### G250 Series Cutting and Welding Outfits

#### Features:

- Built-in flashback and check valves for safety.
- Patented high contrast gauges.
- Color-coded knobs on regulators.
- Features G250 regulator.

**Welding Range:** - 3 in

**Includes:** CA270-V Cutting Attachment; WH270FC-V Welding Handle; 0-3-101 Cutting Tip; 0-UM-250 Welding Nozzle; G250-150-540 Oxygen Regulator; G250-15-510 Fuel Gas Regulator; 3/16 in x 20 ft RM Hose; Goggles; Striker

SKU	Gas Type	Cutting Cap.
900-0384-2706	Acetylene; Oxygen	3/8 in to 5 in



### G350 Series Cutting and Welding Outfits

#### Features:

- Built-in flashback and check valves for safety.
- Patented high contrast gauges.
- Color-coded knobs on regulators.
- Features G350 regulator.

**Welding Range:** - 3 in

**Includes:** CA370-V Cutting Attachment; WH370FC-V Welding Handle; 1-1-101 Cutting Tip; 2-UM-350 Welding Nozzle; G350-150-540 Oxygen Regulator; G350-15-510 Fuel Gas Regulator; 1/4 in x 25 ft RM Hose; Goggles; Striker

SKU	Gas Type	Cutting Cap.
900-0384-2704	Acetylene; Oxygen	3/8 in to 6 in



### Journeyman® 450 Heavy Duty Cutting and Welding System

#### Features:

- Reverse flow check valves and patented built in flashback arrestors.
- Die-forged brass body and housing cap.
- One cutting attachment for all fuel gases.

**Welding Range:** 3/4 in Cuts; 1/2 in Welds - 8 in Cuts; 3 in Welds

**Includes:** SR Series Regulators; Torch Handle with Flashback Arrestors and Check Valves; Cutting Attachment; Cutting Tips; Welding Nozzle

SKU	Gas Type	Cutting Cap.
341-0384-0807	Oxygen; Acetylene	2 in



### Performer® EDGE™ 2.0 Welding & Cutting Outfits

#### Features:

- Cuts up to 6 in (152.4 mm) and welds up to 1/4 in (6.4 mm) with accessories.
- ESS32 Series regulators.
- CA1350 cutting attachment.

**Welding Range:** 1/2 in Cuts; 1/4 in Welds - 1.25 in Cuts; 6 in Welds

**Includes:** (2) EDGE 2.0 Regulators; CA1350 Cutting Attachment; Cutting Tip; Goggles; Heating Nozzle; Hose; Striker; Tip Cleaner; WH100FC Welding Handle; Welding Nozzle

SKU	Gas Type	Cutting Cap.
341-0384-2125	Acetylene; Natural Gas; Propane	6 in



## Quick Connects



### Quick Connect Components

#### Features:

- Brass construction provides long service life.
- Cycle tested over 100,000 operations indicating a service life of 10 to 12 years of comparable use.
- Non-interchangeable oxygen and fuel gas connectors prevent accidental gas mixing.
- Instant closure on reverse flow check valves with total shutoff at only 10 oz of back pressure.

**Material:** Brass

SKU	Connection Type	Used With	Gas Type
312-QDB100	Male Plug	QBD12	Oxygen
312-QDB200	Male Plug	QBD11	Fuel Gas



### Quick Connect Sets

#### Features:

- Brass construction provides long service life.
- Non-interchangeable oxygen and fuel gas connectors.
- Instant closure on reverse flow check valves.
- Spring-loaded locking mechanism responds to fingertip action and achieves a gas-tight connection.
- Double seal socket connection on second seal.

**Material:** Brass

**Gas Type:** Fuel Gas; Oxygen

SKU	Connection Type	Includes
312-QDB10	Torch-to-Hose	QDB11; QDB12
312-QDB20	Hose-to-Hose	QDB21; QDB22
312-QDB30	Regulator-to-Hose	QDB31; QDB32



### Quick Connects

#### Features:

- Brass construction provides long service life.
- Non-interchangeable oxygen and fuel gas connectors.
- Instant closure on reverse flow check valves.
- Spring-loaded locking mechanism responds to fingertip action and achieves a gas-tight connection.
- Double seal socket connection on second seal.
- Color-coding for gas service type provides additional safety.

**Material:** Brass

**Gas Type:** Inert Gas

SKU	Connection Type
312-QDB33	QDB300 Male Plug; QDB301 Female Socket; Regulator-to-Hose
312-QDB34	QDB302 Male Plug; QDB303 Female Socket; Regulator-to-Hose



## Regulator & Flowmeter Parts



### Brass Cylinder Adaptors

#### Features:

- Use a brass cylinder adaptor to connect a regulator to a cylinder or other equipment when different CGA threads on the mating parts make a direct connection impossible.
- Adaptors should not be used as permanent installations.

**Material:** Brass

SKU	Gas Type	CGA No.
312-306	Acetylene	CGA-200; CGA-520
312-314	Acetylene	CGA-200; CGA-520
312-315	Acetylene	CGA-510; CGA-520
312-317	Acetylene	CGA-510; CGA-520
312-320	Acetylene	CGA 200; CGA 510
312-324	Acetylene	CGA-200 MC Acetylene; CGA-510 POL Acetylene
312-415	Oxygen	CGA-540; CGA-580
312-51	Acetylene	CGA-300 Commercial Acetylene; CGA-510 POL Acetylene
312-61	Acetylene	CGA-300 Commercial Acetylene; CGA-510 POL Acetylene
312-806	Carbon Dioxide; Nitrogen	CGA-320 Carbon Dioxide; CGA-580 Nitrogen
312-810	Carbon Dioxide (CO <sub>2</sub> ); Nitrogen	CGA-320; CGA-580



### Regulator Inlet Nipples

#### Features:

- Western offers nuts and nipples in a variety of materials and styles to fit a full range of gas service requirements.
- Five different types of nut/nipple combinations are available.

**Material:** Brass

SKU	Gas Type	Thread Size	Length	CGA No.
312-15-3	Acetylene (POL); Air; Argon; Helium; Medical Mixtures; Nitrogen	1/4 in (NPT)	3 in	CGA-500; CGA-510; CGA-540; CGA-580
312-15-4	Acetylene (POL); Air; Argon; Helium; Medical Mixtures; Nitrogen	1/4 in (NPT)	3-1/2 in	CGA-500; CGA-510; CGA-580; CGA-590
312-29-3	Industrial Mixtures of Oxygen	1/4 in NPT	3 in	CGA-296
312-66-SF	Oxygen	1/4 in (NPT)	2-1/2 in	CGA-540
312-69	Oxygen	1/4 in (NPT)	3 in	CGA-540
312-CO-3	Carbon Dioxide (CO <sub>2</sub> )	1/4 in (NPT)	2 in	CGA-320
312-CO-4	Carbon Dioxide (CO <sub>2</sub> )	1/4 in (NPT)	2-1/2 in	CGA-320



### Regulator Inlet Nuts

#### Features:

- Machined to CGA specifications.
- Designed to accommodate a full range of gas service requirements.
- Easy to install.

**Material:** Brass

SKU	Gas Type	CGA No.
312-15-2	Acetylene (POL)	CGA-510
312-62	Oxygen	CGA-540
312-92	Argon; Helium; Nitrogen	CGA-580
312-CO-2	Carbon Dioxide (CO <sub>2</sub> )	CGA-320







## Regulator Inlet Washers

### Features:

- For use with regulator nuts and nipples.
- Designed to fit a full range of gas service requirements.

SKU	Gas Type	Material	CGA No.
312-CO-6	Carbon Dioxide (CO2)	PTFE Fluorocarbon Resin	CGA-320
312-CO-6N	Carbon Dioxide (CO2), Non-Corrosive Gases	Nylon	CGA-320, CGA-330



## Regulator Outlet Bushings

### Features:

- Made from the highest quality material to ensure functionality and durability.
- Used to reduce an outlet in a fitting or to connect a pipe to a larger outlet.

**Material:** Brass

SKU	Gas Type	Thread Size
312-142	Oxygen	3/8 in NPT Male
312-32	Oxygen	1/4 in (NPT)
312-33	Acetylene; Fuel Gas	1/4 in (NPT)
312-D-34	Oxygen	1/2 in NPT Male



## Regulators & Flowmeters



## CutSkill® TPR 250 Single Stage Light Duty Inert Gas Regulators

### Features:

- Forged brass body and housing cap.
- Internal relief valve.
- Single stage construction.
- Stem type seat mechanism.
- Neoprene diaphragm.

**Gas Type:** Inert Gas

**Flow Range:** 10 - 250 psig

**Inlet Connection:** CGA 580

**Inlet Pressure:** 3000 psig

**Outlet Pressure:** 500 psig



SKU	Length
341-0781-9135	6.38 in



## SR 4 High Pressure Single Stage Piston Regulators

### Features:

- High pressure.
- Dead-end testing.
- May be panel mounted.
- Single stage design.
- Piston type actuation.
- All SR 4 series regulators have a swaged lock type stainless steel outlet fitting.
- Cartridge type seat assembly with PCTFE seat.
- Delrin® cap bushing for smooth adjustments.
- External adjustable relief valves on F and G range models.
- Hydrogen models have ventable relief valves.

**Gas Type:** Inert Gas

**Flow Range:** 200 - 3000 psig

**Inlet Connection:** CGA 580

**Inlet Pressure:** 3000 psig

**Outlet Pressure:** 3000 psig



SKU	Length
341-0781-1448	6 in



## Single-Stage Preset Regulators

### Features:

- Chrome-plated brass body with all brass high-pressure chamber.
- Internal reseating relief valve protects against over-pressurization.
- Sintered filter for additional safety and to extend regulator life.
- Available with horizontal outlet (M1A) or with 90° outlet (M1).

**Gas Type:** Oxygen

**Flow Range:** 0 to 50 psi

**Inlet Connection:** CGA 540 Nut and Nipple

**Inlet Pressure:** 3000 psi

**Outlet Pressure:** 50 psi



SKU
312-M1-540-P

## Tips & Nozzles



### Harris® Style 1-Pc Acetylene Cutting Tips - 6290 Series

**Features:**

- One-piece tip for acetylene-oxygen.
- Medium preheat for general hand cutting.
- Fits 42, 62, 72, 72A, 73, 73A, 142, 880, 85 torches.

**Material:** Copper

**Gas Type:** Acetylene

**Used With:** Oxygen

SKU	Tip Size Symbol	Orifice
900-6290-1	1	0.047 in
900-6290-2	2	0.060 in



### Victor® Style 1-Pc Acetylene Cutting Tips - 1-101 Series

**Features:**

- One-piece tip for acetylene-oxygen.
- Medium preheat for general hand and machine cutting.
- Fits 2460, CA 1060, ST, SST, 1400C machine torches.

**Material:** Copper

**Gas Type:** Acetylene; Oxygen

**Used With:** 2460; CA 1060; ST; SST; 1400C

SKU	Tip Size Symbol	Orifice
900-1-101-0	0	0.041 in
900-1-101-1	1	0.047 in
900-1-101-2	2	0.060 in
900-1-101-3	3	0.071 in
900-1-101-4	4	0.083 in



### Victor® Style 1-Pc Acetylene Cutting Tips - 3-101 Series

**Features:**

- One-piece tip for acetylene-oxygen.
- Medium preheat for general hand cutting.
- Fits CA 1260, CA 1350, C 1450, CA 2060, CA 2460, CST 800, C 1400 torches.

**Orifice:** 0.047 in

**Material:** Copper

**Gas Type:** Acetylene

**Used With:** Oxygen

SKU	Tip Size Symbol
900-3-101-1	1



### Series 1 Type 101 Cutting Tips

**Features:**

- Hand and machine torch cutting.
- General purpose tip.
- Genuine manufacturer consumable.

**Material:** Copper

**Gas Type:** Acetylene

SKU	Tip Size Symbol	Orifice	Used With	Head Type
341-0330-0002	3	Size 3	MT 200; ST 1000FC; ST 2600FC; ST 900FC; MT 1065; MT 300; MT 5	Straight
341-0330-0004	00	Size 00	MT 200; ST 1000FC; ST 2600FC; ST 900FC; MT 1065; MT 300; MT 5	Straight
341-0330-0005	1	Size 1	100FC; J Series; CST 800FC	Straight
341-0330-0006	2	Size 2	100FC; J Series; CST 800FC	Straight
341-0330-0007	4	0.083 in	100FC; J Series; CST 800FC	Cutting torch
341-0330-0012	0	Size 0	MT 200; ST 1000FC; ST 2600FC; ST 900FC; MT 1065; MT 300; MT 5	Straight



### Type 303MP Cutting Tips

**Features:**

- General purpose.
- Propylene hand and machine torch cutting.

**Gas Type:** MAPP®; Propylene

SKU	Tip Size Symbol
341-0330-0193	2

## Torches & Handles



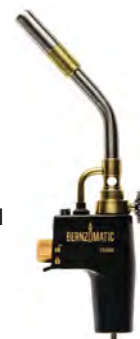
### Max Performance Torch Heads

**Features:**

- The Bernzomatic® Max Performance Torch is built with instant on/off ignition, an adjustable ultra-swirl flame and flame lock option for continuous use.
- It is pressure regulated for consistent performance when inverted, making it ideal for large diameter soldering, light brazing, woodworking and cooking.
- The Max Performance Torch is compatible with Bernzomatic® MAP-Pro® fuel and Bernzomatic® Propane fuel, sold separately.

**Uses Cutting Tip:** Swirl Flame

**For Model:** 14.1 oz MAP-Pro®; 14.1 oz and 16 oz Propane Fuel Cylinders



SKU	Length
189-361530	14 in



## ST900 Series Straight Cutting Torches

### Features:

- Cutting capacity 1/8 in to 5 in.
- Includes built-in patented flashback arrestors and reverse flow check valves for added safety.

**Head Angle:** 90°

**Uses Cutting Tip:** Series 1

SKU	Cutting Cap.	Length
341-0381-1621	5 in	21 in

## MANUAL WELDING

### Electrode Holders



## Electrode Holders - High Tong Type

### Features:

- Lever designed for better hand clearance and better hold.
- Made from high quality materials for both high conductivity and improved cable connections.
- Ergonomically designed heavy-duty shock-proof nylon handle.

**Body Material:** Brass

SKU	Process	Amps	Electrode Cap.	Cable Cap.	Length
900-A-316	Manual Arc Welding	250 A	4 mm	1/0	9.25 in
900-A-532	Manual Arc Welding	200 A	3.2 mm	#3	8.46 in
900-A-732	Manual Arc Welding	300 A	5 mm	1/0	10.04 in



## Manual-Arc Welding Electrode Holders

### Features:

- Fully insulated spring.
- Integral grooves.
- Integrated jaw pattern for multi-position electrode holding.

**Body Material:** Copper Alloy

SKU	Process	Amps	Electrode Cap.	Cable Cap.
138-14679	Manual Arc Welding	250 A	3/16 in	4 ; 1/0
138-14680	Manual Arc Welding	300 A	1/4 in	4; 2/0



## Tong® Electrode Holders

### Features:

- Reversible top and bottom Insulators.
- Efficient six-position jaw patterns and fully insulated, protected springs.
- Ball-point cable connection.

**Cable Cap.:** Ball Point - 2/0

**Body Material:** Copper Alloy

SKU	Process	Amps	Electrode Cap.	Length
358-9110-1101	Manual Arc Welding	200 A	5/32 in	8-1/2 in
358-9110-1102	Manual Arc Welding	250 A	3/16 in	9-1/4 in
358-9110-1103	Manual Arc Welding	300 A	7/32 in	10 in

## MIG WELDING

### Mig Gun Parts & Accessories



## Centerfire™ MIG Contact Tips

### Features:

- Design allows quick, tool-free replacement.
- Can be rotated 360 degrees to create new wear surfaces and extended tip life.
- Non-threaded and stays in place by hand-tightening the nozzle.
- Tapered base to improve conductivity and reduce heat for better weld quality.
- Remains centered even after hard use to ensure consistent weld quality.

**Used With:** Bernard™ BTB; S-Gun™; Clean Air™; Dura-Flux™

**Overall Length:** 1.5 in

SKU	Material	Wire Size
360-T-035	Copper	0.035 in
360-T-045	Copper	0.045 in



## MIG Contact Tips

### Features:

- Works with Best Welds® gas diffuser or equivalent OEM MIG guns.
- Industry part number easily recognizable.
- Durable and precise.

SKU	Tip I.D.	Material	Wire Size	Used With	Overall Length
900-000-068	0.044 in	Copper	0.035 in	Miller® M15; M25/25M; M40/40AL	1.125 in
900-11-35	0.044 in	Copper	0.035 in	Best Welds® 135; Tweco® Mini® and No 1	1.0 in
900-14-35	0.044 in	Copper	0.035 in	Best Welds® 250/400; Tweco® No 2, 3 and 4	1.5 in
900-14-45	0.054 in	Copper	0.045 in	Best Welds® 250/400; Tweco® No 2, 3 and 4	1.5 in



## MIG Gun Nozzle Retainers and Diffusers

### Features:

- Industry part number easily recognizable.
- Meets or exceeds OEM quality and performance.

**Material:** Brass

SKU	Used With
900-54A	Best Welds® 400 A; Tweco® Nos 2 and 4 MIG Guns

## MIG Liners



### Features:

- Industry part number easily recognizable.
- Meets or exceeds OEM quality and performance.

**Wire Size:** 0.035 in

**Wire Size:** 0.045 in

**Used With:** Tweco® Style No 3 and 4; Best Welds 400 A

SKU	Length
900-44-3545-15	15 ft

## MIG Gun Nozzles



### Features:

- Industry part number easily recognizable.
- Meets or exceeds OEM quality and performance.

SKU	Nozzle Style	Bore Size	Used With
900-169-725	1/8 in Recess	5/8 in	Miller® M25/25M, M40/40AL; Hobart MIG Welding Guns
900-169-726	Flush	5/8 in	Miller® M25/25M, M40/40AL; Hobart MIG Welding Guns
900-21-50	1/8 in Recess; Self-Insulated	1/2 in	Best Welds® 135, Tweco® Mini®/No 1
900-23-62	1/8 in Recess; Self-Insulated	5/8 in	Best Welds® 250/400; Tweco® No 2, 3 and 4
900-24A-62	Adjustable	5/8 in	Best Welds® 400; Tweco® No 4



## Quick Tip™ MIG Nozzles

### Features:

- Features a removable nozzle cone that lowers downtime and consumable costs by allowing operators to replace only the cone without removing and replacing the entire nozzle.

**Used With:** Series 1 Tip; D114Q/D118Q/D1FQ Diffusers; 4423R Insulator



SKU	Nozzle Style	Bore Size
360-N1C58HQ	Threaded; 1.125 in O.D.	5/8 in



## Parts and Accessories for MIG Guns



### Features:

- Parts and Accessories.
- Compatible with all MIG guns.

**Style:** 94C

SKU	Used With
358-2040-2093	No. 4/5/6 Series MIG Guns

## Mig Guns



## MIG Guns For Miller® Consumables

### Features:

- Convenient mig guns are designed for use with Miller® style front end consumables.
- Comfort grip trigger and handle for easy usage.
- Heavy duty spring strain relief.

**Welding Amp @ Duty Cycle:** 250 A @ 80%; 280 A @ 60%

**Wire Size:** 0.030 in - 0.035 in

**Cable Length:** 15 ft

SKU	Gas Type	Cooling Method
900-250M153035M	Argon/CO2	Air

## PLASMA CUTTING

### Plasma Parts



## Shield Cups

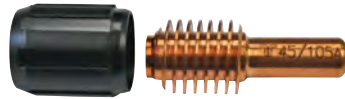


### Features:

- Specifically designed for the SL60 or SL100 plasma 1 Torch.
- Suitable for all Thermal Dynamics Cutmaster plasma cutters.

SKU	Used With
365-9-8218	SL 60; SL 100





## Replacement Hypertherm® Electrodes Suitable for DURAMAX® Torches/POWERMAX®

### Features:

- Trademark Disclaimer: Registered trademarks are the property of their respective owners; the distributor is in no way affiliated with the above named manufacturers.
- (c) Must be used only as a set of electrode and swirl ring, this complete set in interchangeable and compatible with original parts; electrodes are packed together with swirl ring holder (black part) in ratio 5 electrodes to 1 holder.

**Amps:** 45 A-105 A

SKU	For Unit
826-220842X5	DURAMAX® Hand/Machine Torch; POWERMAX® 45XP/65/85/105



## 1Torch™ Electrodes

### Features:

- Designed for use with 1Torch® RPT torches.
- OEM consumable.

**Amps:** 30 A to 120 A

SKU	For Unit
365-9-8215	SL60; SL100



## Start Cartridges

### Features:

- 1Torch™ RPT torch is the first plasma cutting torch that performs with virtually all plasma cutting power supplies.
- 1Torch™ works with high frequency start systems.

SKU	For Unit
365-9-8213	SL 100; SL 60

## Plasma Tips

### Features:

- Plasma tips designed specifically for plasma torches.
- Produces fast, quality cut with little to no distortion.
- Genuine manufacturer consumable.



SKU	Type
365-9-8210	Standoff Tip; 60 A
365-9-8212	90-100 Amp

## SOLDERING & BRAZING

### Soldering/Brazing Kits



## Self-Igniting Torches

### Features:

- Self-Igniting.
- Trigger start for ease of lighting.
- Stainless steel burn tube and brass tip for durability.
- Adjustable flame control.

**Gas Type:** Propane

**Includes:** TS3500 Torch



SKU	Flame Type
189-361519	Adjustable



## Torch Kit Swirls

### Features:

- Features Extreme Swirl Technology which generates more heat for faster brazing times and less gas consumption, combined with a traditional manual lighting torch.
- Tips feature quick disconnect couplings.
- Color coded "O" rings for gas identification.

**Gas Type:** Acetylene

**Includes:** AR-B (CGA 520) Regulator; G-4 Rear Valve Handle; AH-12 Hose; A-3 Tip; A-11 Tip; B Tank Connection; Instruction Manual



SKU	Process	Flame Type
341-0386-0335	Brazing HVAC; Plumbing; Silver Braze Tube 1-5/8 in; Soft Solder Tube Capacity 3 in	Swirl

## Soldering/Brazing Torches



## Basic Pencil Flame Torches

### Features:

- Used for light work.
- Produces a high volume 1/2 inch pencil point flame for detail work.
- Adjustable flame control.

**Process:** Soldering; Heating



SKU	Gas Type	Body Material
189-UL2317	Propane	Brass

# BERNZOMATIC®

## High Heat Torch

**Features:**

- Work faster and more efficiently with maximum heat.
- Ideal for job site projects including large soldering, brazing, heat treating and light welding.
- Large, optimized swirl flame provides maximum heat output.
- Cast aluminum body for durability.
- Pressure regulated for consistent performance when tilted or momentarily inverted.
- Run-lock button keeps the torch lit for continuous use.

**Includes:** High Heat Torch



SKU	Gas Type	Body Material
189-361524	MAPP® (Methyl Acetylene-Propadiene)	Cast Aluminum

## Trigger Start Micro Torches

**Features:**

- Micro flame butane torch for light, detailed work.
- Trigger start for ease of use.
- Refillable for convenience.

**Includes:** Torch and 3-in-1 versatile tip



SKU	Gas Type
189-ST2200T	Butane

## TIG WELDING

### Tig Torch Parts & Accessories



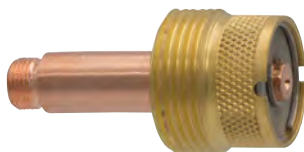
## Collets

**Features:**

- Add a trusty tool to your kit with this industry standard part.
- High quality collets offer a reliable solution.

**Material:** Copper

SKU	Used On	Size
900-10N24	17; 18; 26	3/32 in
900-10N25	#17; #18; #26 Torches	1/8 in



## Gas Lens Collet Bodies

**Features:**

- Gas lenses provide a more efficient stream of shielding gas to the welding process.
- The gas lens virtually eliminates turbulence in the gas shielding stream as it emerges from the nozzle.
- Two-piece construction.

**Material:** Brass/Copper

SKU	Used On	Size
900-995795	#17; #18; #26 Torches	1/8 in

# WELD-CRAFT® The TIG Welder's Choice

## Alumina Nozzles

**Features:**

- High impact resistance, heat resistance and thermal conductivity, and resist splatter buildup.
- For use with A-150, A-200, A-250, W-350, W-410, W-225 Modular, and W-500 Pencil Auto TIG Torches.

**Orifice Opening Size:** 7/16 in

**Length:** 1.8 in

**Material:** Alumina



SKU	Used On Torch(es)	Nozzle Size
366-10N47	#17; #18; #26 Torches	#7



## 2% Ceriated Ground Tungsten Electrodes

**Features:**

- Different electrical characteristics from thoriated.
- Long lasting.

**Material:** 2% Ceria Ground



SKU	Dia.	Length
900-1167GC2	1/16 in	7 in
900-187GC2	1/8 in	7 in
900-3327GC2	3/32 in	7 in

## 2% Thoriated Tungsten Electrodes

**Features:**

- Thoriated tungsten electrodes are consumed more slowly than other types of TIG electrodes and are the most commonly used type of tungsten electrode.
- They provide good arc starts and good arc stability for moderate-current AC or DC welding on copper, nickel, titanium, and stainless steel.
- Thoriated tungsten electrodes contain thorium, which is a radioactive substance.
- The electrodes insert into a compatible TIG torch that is connected to a TIG welder that supplies current to the electrode.

**Material:** 2% Thoriated



SKU	Dia.	Length
900-1/16-7GT2	1/16 in	7 in
900-3/32-7GT2	3/32 in	7 in
900-1/8-7GT2	1/8 in	7 in



## 2% Lanthanated Tungsten Electrodes

### Features:

- Non-radioactive substitute for 2% thoriated tungsten.
- Similar characteristics to ceriated tungsten.

**Material:** 2% Lanthanated



SKU	Dia.	Length
900-1167GL2	1/16 in	7 in
900-187GL2	1/8 in	7 in
900-3327GL2	3/32 in	7 in

## E3 Tungsten Electrodes

### Features:

- Longer life than thoriated electrodes.
- Non-radioactive additives.
- Can be used in both AC and DC processes.
- Excellent arc starting and stability.
- Reduce amperage by 50 recalibrate from other tungsten.

**Material:** E3



SKU	Dia.	Length
900-1167GE3	1/16 in	7 in
900-187GE3	1/8 in	7 in
900-3327GE3	3/32 in	7 in

## Pure Ground Tungsten Electrodes

### Features:

- Generally used in the welding of aluminum or magnesium.
- Good arc starting stability when used with AC.
- Tip forms clean balled end.

**Material:** Pure Ground



SKU	Dia.	Length
900-3327G	3/32 in	7 in



## Atom Arc 7018 Electrodes

### Features:

- Premium quality electrode.
- Wide range of welding parameters.
- Reduced post weld clean up.

**Material:** Carbon Steel

**Wt.:** 50 lb



SKU	Dia.	Length
537-255011819	1/8 in	14 in



## I-Purge® Modular Inflatable Bladder Systems with High Heat Harnesses

### Features:

- I-Purge® creates an impermeable seal to consume the least amount of purge gas during pipe purging and welding.
- Reusable bladder system enables operators to satisfy a myriad of purge requirements with one interchangeable solution.
- Comes equipped with several highly advanced features, such as Quick Connect Interchangeable Fittings, Proprietary Relief Valve, and Tri-Flow Inner Tubing System (blue, black, and white hoses).

SKU	Type
047-ABLD-3	3 in Inflatable Double Purge Bag System w/High Heat Harness
047-ABLD-4	4 in Inflatable Double Purge Bag System w/High Heat Harness

## Water Soluble Papers and Tapes



### Features:

- Provides a convenient and cost effective method for creating purge chambers for pipe welding.
- Low air permeable purge gas barrier for TIG welding.
- Excellent barrier for retaining noble gas (argon and argon/helium mix).
- Simple and fast construction.
- Dissolves effortlessly and rapidly during water or steam hydro-test, leaving no residue in pipeline.

SKU
047-ASWT-2
047-ASW-35/R-15
047-ASW-60/R-15

## Tig Torches & Torch Bodies



## TIG Torch Bodies

### Features:

- Torch body for TIG welding torch.
- Reliable quality.

**Material:** Vinyl

**Cooling Method:** Air

SKU	Head Type	Cable Length
900-17FV	Flex with Valve	12.5 ft



## TIG Torch Packages

**Features:**

- Meets or exceeds OEM quality and performance.
- Complies with industry standard part number.

**Material:** Rubber

**Cooling Method:** Air

**Includes:** Torch; (1) Handle; 1-Pc Rubber Power Cable; Insulator; Long Back Cap



SKU	Head Type	Cable Length
900-17FV-25-R	Flex with Valve	25 ft

## TORCH & WEED BURNERS



## Hotspotter All Purpose Propane Torches

**Features:**

- Flame tools are for exterior maintenance and repair.
- Hotspotter is an all-purpose propane torch that delivers at full cylinder pressure with no smoke and no fumes.
- Ergonomic handle with adjustable trigger.
- Hooks up to standard 20-pound propane tank.

**Gas Type:** Propane

**Handle Length:** 31 in

**Hose Length:** 10 ft



SKU	Output Power	Type	Includes
312-WB-101	500000 Btu	Heavy-Duty Open Flame Torch	Brass Propane Tank Adaptor; Brass Flow Control Shut-Off Valve; Spark Ignitor; Cast Iron and Steel Nozzle; Hose
312-WB-102	500000 Btu	Medium-Duty Open Flame Torch	Brass Propane Tank Adaptor; Brass Flow Control Shut-Off Valve; Spark Ignitor; Welded Tube Nozzle; Hose



## Hotspotter All Purpose Propane Torches with Push-Button Igniter

**Features:**

- Hotspotter is an all-purpose propane torch that delivers at full cylinder pressure with no smoke and no fumes.
- Ergonomic handle with adjustable trigger.
- Push button igniter for fast and safe lighting.
- Hooks up to standard 20-pound propane tank.

**Gas Type:** Propane

**Handle Length:** 31 in

**Hose Length:** 10 ft

**Includes:** Welded Tube Nozzle; Hose with POL and Excess Flow Check; Wrenches

SKU	Output Power
312-WB-100	550000 Btu



## Hotspotter Replacement Parts

**Features:**

- Flame tools are for exterior maintenance and repair.
- Hotspotter is an all-purpose propane torch that delivers at full cylinder pressure with no smoke and no fumes.
- Ergonomic handle with adjustable trigger.
- Push button igniter for fast and safe lighting.
- Hooks up to standard 20-pound propane tank.

**Gas Type:** Propane

**Hose Length:** 10 ft

**Includes:** Excess Flow Valve

SKU
312-WB-100-25

## WELDING & CUTTING ACCESSORIES

### Anti-Spatter & Chemicals



## Anti-Spatters

**Features:**

- Helps protect MIG gun nozzles, contact tips, accessories and all welding zones during single- and multi-pass welding.
- Non-flammable.
- Reduces spatter build-up on MIG nozzles, prevents spatter adhesion.
- Heat-resistant to withstand high temperature use.
- Paint compatible.
- Contains no silicones, no fluorocarbons.



SKU	Capacity Vol.	Chemical Compound
905-620-240Z	24 oz	Methylene Chloride
905-620-160Z	16 oz	Solvent-Based

## Lube Pads

**Features:**

- Eliminates erratic wire feed caused by dust particles of flashing being trapped inside conduit lines.
- Contains no solvents, abrasives, carbon, sulfur, nitrogen, moly disulphide or silicon.
- Non-flammable, non-toxic.

**Chemical Compound:** None



SKU	Type
905-LUBE-PAD-6PK-TREATED	Treated Wire Lube Pad
905-LUBE-PAD-6PK-PLAIN	Plain Wire Lube Pad





## Nozzle Dip Gels

### Features:

- Prevents spatter build up on nozzles and tips.
- Odorless—no unpleasant or harmful odors.

**Chemical Compound:** Petroleum Jelly



SKU	Capacity Vol.
905-NOZZLE-DIP	16 oz



## Welder's Anti-Spatter Sprays

### Features:

- Water-based formula allows easy clean-up without the use of solvent cleaners.
- Low odor.
- Rust-inhibiting additive prevents flash rust on in-process and surrounding metal surfaces.
- Non-hazardous decomposition.

**Chemical Compound:** Water; Dimethyl Ether; Lactic Acid; White Mineral Oil



SKU	Capacity Vol.
125-03083	16 oz



## Anti-Spatter 200

### Features:

- Non-flammable.
- Provides weld prep protection on parts to be stored.
- Requires little cleaning prior to painting when applied properly.
- Silicone Free.
- Liquid may be applied by brush or roller.
- Provides protection to MIG gun nozzles, contact tips, accessories and all weld zones during single and multi-pass welding.

**Chemical Compound:** Lecithin; Methylene Chloride; Silicone-Free



SKU	Capacity Vol.
368-DF200-16	16 oz



## SF 7900™ Ceramic Shield for Welding

### Features:

- Unique, silicone-free ceramic protective coating that prevents metal spatter from adhering to welding equipment.
- Coating forms a dry film that repels spatter and ensures uninterrupted welding for up to 8 hours without the need for re-application.
- Suitable for manual MIG/MAG welding, laser and plasma cutting or for protecting jigs, fixtures, and fittings.
- Known as AERODAG CERAMISHIELD.

**Chemical Compound:** Boron Nitride



SKU	Capacity Vol.
442-1616692	9.5 oz



## Lube-Matic® Kleener Pads

### Features:

- Red pads clean rust and dirt off wire surface reducing burnbacks by up to 50%.
- Excellent for all types of welding wire including aluminum.



SKU
388-007061

## Lube-Matic® Lube Pads

### Features:

- For all types of steel wire including solid and fabricated.
- Each black pad is pre-treated with Lube-Matic® liquid allowing for smooth feeding of wire with poor cast, poor helix, rust, or long feed liners.
- Not recommended for aluminum.



SKU
388-007060



## Lube-Matic® Wire Kleener and Lubricant

### Features:

- Helps feed all mild steel, fabricated, and core wires.
- Cuts rust, removes dirt, and reduces wire drag by 60%.
- Use to re-lube black pads.
- Great for longer distance feed.

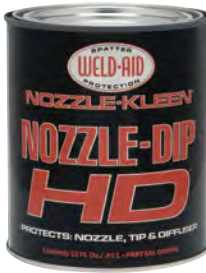


SKU	Capacity Vol.
388-007040	5 oz

## NOZZLE-DIP® HD® Anti-Spatter

### Features:

- Water-based gel.
- Reduces spatter buildup on nozzles and tips.
- Excellent cooling properties for longer tip and nozzle life.
- Can dip hot or cold, gel will not migrate into liner.
- Non-flashing and paintable.
- Does not contain silicones, fluorocarbons, or methylene chloride.



SKU	Capacity Vol.
388-007094	1 qt

## Nozzle-Kleen #2® Anti-Spatter

### Features:

- Solvent-based, paintable, and non-flammable.
- Protects nozzles, diffusers, and tips.
- Smoke and odor free.



SKU	Capacity Vol.
388-007022	16 oz

## Nozzle-Kleen® Heavy Duty Anti-Spatter

### Features:

- Outstanding fixture protection.
- Excellent for stainless steel.
- Non-flammable, paintable, no fluorocarbons and ozone friendly.



SKU	Capacity Vol.
388-007020	16 oz



## NOZZLE-KLEEN® York 107A Anti-Spatter

### Features:

- A convenient quick-drying aerosol that contains no methylene chloride.
- 107A allows for pre-heat, higher duty cycles, and higher temperature applications.
- Excellent for fixture and tooling protection.
- Paintable, non-flammable, and contains no fluorocarbons.



SKU	Capacity Vol.
388-YOR-107-A	20 oz

## Weld-Kleen 350® Anti-Spatter

### Features:

- Environmentally friendly and a safe, effective water-based product designed for use on most base metal applications.
- Ideal for protecting parts, clamps, tooling, and fixtures.
- Non-hazardous, non-flammable and paintable.



SKU	Capacity Vol.
388-007090	1 gal
388-007091	5 gal
388-007092	55 gal

## Weld-Kleen HD® Anti-Spatter

### Features:

- Quick drying aerosol that allows for pre-heat, higher duty cycles, and higher temperature applications.
- Excellent for fixture and tooling protection.



SKU	Capacity Vol.
388-007030	20 oz

## Cable Connectors & Lugs



### Cable Connectors

#### Features:

- Designed to efficiently conduct current through detachable-type connection.
- Cam-action design allows lock-in with a twist and pulls the two halves tightly together.
- Metal parts are precision machined from heavy brass extrusion; resists rust and corrosion.
- Molded rubber connector covers have good resistance to heat, cold, abrasion, ozone, oils and solvents.
- Tapered ends lock out moisture, oil, and dirt.
- Male/female connectors are interchangeable with popular like-size competitor models.

**Connection Type:** Ball Point

**Cable Cap.:** 1/0 - 2/0



SKU	Type	Style
900-LC-40M	LC40 Male Cable Connector	Male
900-LC-40	LC40 Male and Female Cable Connectors	Male; Female



Powering Business Worldwide

### F Series E1012 Plugs

#### Features:

- Reinforced thermoplastic construction.
- No moving contact surfaces, eliminating arcing or burning.
- Accepts a wide range of cable sizes.

**Connection Type:** Set Screw Male Plug

**Cable Cap.:** 3/0 - 1/0



SKU	Type
627-E1012-63	Cam-Lok™ Single Pole Connector



### Insulated Cable Lugs

#### Features:

- Cable lugs give you completely insulated welding machine terminal connections.
- They also give you quick-connect convenience.
- Simple and safe to use.

**Connection Type:** Terminal Cover



SKU	Type	Style
138-14746	Angled Cable Lug	ULB-45 Uni-Trik



### Quick-Trik® Cable Connectors

#### Features:

- Camlock and locking bar draw together for virtually unbreakable connection.
- Form-fitted rubber jacket insulator protects against moisture, oil and dirt.
- Large dome-nose screw for high-conductivity connection.

**Includes:** Form-fitted rubber jacket insulator

**Connection Type:** Single Dome-Nose

**Cable Cap.:** 2/0 AWG - 1/0 AWG

SKU	Style
138-14733	Male/Female
138-14739	Male



### Cable Connectors

#### Features:

- Cam action design of male half connector pulls the two halves together.
- Connector covers are molded from a special heat- and cold-resistant material.
- Covers have no metal liner to rust or corrode.
- Metal parts are precision machined with heavy specially shaped brass extrusion.

**Connection Type:** Single Oval-Point Screw

**Cable Cap.:** 1/0 - 2/0

SKU	Style
380-05050	Male/Female
380-05053	Male/Female

### Cable Lugs

#### Features:

- Made from copper tubing.
- Extra long barrels for easy soldering or attaching by the swedg-on process.
- Stud holes made especially for welding machines with plenty of clearance.
- Flared ends make it easy to insert the cable in the lug.

**Cable Cap.:** 1/0 - 2/0



SKU
380-07020

### Connector Terminals

#### Features:

- Add on cable.
- Take off cable.
- Change polarity.



SKU	Style
380-08030	Angle



## Cable Connectors

### Features:

- Provides a positive cam action which optimizes interface between connector halves.
- Equipped with heat- and oil-resistant covers.

**Connection Type:** Single Ball-Point

**Cable Cap.:** 3/0 - 1/0

SKU	Includes
358-9425-1200	(1) Female; (1) Male
358-9425-1210	(2) Male

## Terminal Connectors

### Features:

- Helps improve cutting performance.
- OEM quality.



**Connection Type:** Female Terminal Connector

SKU
358-9510-1110

## TwecoLugs® Crimp/Solder Lugs

### Features:

- Safe and simple.
- Crimp or solder power cable lug.

**Connection Type:** Female Plug



SKU	Style	Cable Cap.
358-9520-1104	T-62	6 - 2
358-9520-1105	T-120	2/0 - 1/0

## Cable Covers



## Cable Covers with Zipper

### Features:

- Non-conductive zipper with an overlap flap protects the zipper from weld splatter.
- Special snug-straps serve as a cinching mechanism at both ends of the cable cover.
- Tabs secure the cover to the cable assembly.

**Closure Type:** Zipper

**Temp Range:** 2100° F

**Material:** Black Nylon



SKU	Size Group	Length
900-WC-3-22	Medium	22 ft

## Centering Heads



## Centering Heads

### Features:

- Aids in setting of center lines, establishing angles and marks for butt-ins, location points inside pipes and tanks, laying out keyways, and measuring declivity.
- The Y-type head is fitted with an adjustable dial bubble protractor (DSL).

- Use a tapping hammer to operate the hardened centering pin.

**Head Type:** Y-Type



SKU	Pipe Cap.	Head Width	Type
430-14775	1/2 in - 4 in	4 in	#6 Standard Centering Head; DSL
430-14776	1 in - Larger	8 in	#7 Jumbo Centering Head; DSL



## Magnetic Centering Heads with Vial

### Features:

- One piece Y-shaped body design with magnetic legs.
- Built-in dial with 2-1/2° increments that turns 360°.
- Hardened center punch marks set position by taping with a hammer.
- Used to establish and mark a centerline at any angle around circumference on a pipe or tank or as a protractor level.
- Excessive heat can damage magnets.

**Head Type:** Y-Shaped



SKU	Pipe Cap.	Type
496-53025-M	1 in - Larger	Small
496-53076-M	6 in - Larger	Medium
496-53085-M	12 in - Larger	Large

## Replacement Parts For Centering Head

### Features:

- Replacement parts.
- Used for magnetic centering heads.

**Type:** Engraved Dial with Vial



SKU
496-1711-E



## Cutting & Burning Guides



### Rap-Around Pipe Templates

**Features:**

- Has a tough edge to protect from fraying and splitting which extends the life of the product.
- Clear vinyl container for protection in between jobs.



SKU	Size Group	Width	Length	Pipe Capacity
900-RA150	Small	2-1/2 in	2 ft	1 in - 3 in
900-RA160	Large	4 in	4 ft	3 in - 6 in
900-RA170	Large	4 in	6 ft	3 in - 10 in
900-RA177	X-Large	4 in	7 ft	4 in - 12 in



### Magnetic Burning Guides

**Features:**

- Use with a burning torch or straight edge.
- Base has three 30-pound pull cast-in magnets.
- Withstands heat and spatter.

**Length:** 24 in



SKU	Size Group	Width
430-14791	#28	2 in

### Wrap-A-Round® Rulers

**Features:**

- Feature metric scale and pitch chart.
- Resists heat and cold.



SKU	Size Group	Width	Length	Pipe Capacity
430-14752	Medium	3.88 in	4 ft	3 in - 6 in
430-14753	Large	3.88 in	6 ft	3 in - 10 in
430-14764	Large	3.88 in	6 ft	3 in - 10 in
430-14754	X-Large	5 in	7 ft	4 in - 12 in
430-14756	XX-Large	5 in	9 ft	6 in - 16 in



### Circle Wiz Cutting Attachments

**Features:**

- For use with conventional torches to cut small to medium holes.
- Made with a universal brass bushing to adapt to any size or make of cutting torch, for larger circles buy the Chariot Cutting Guide 24219.

**Cutting Diam:** 5/8 in - 8 in



SKU
496-CW-300



### Magnetic Torch Guides

**Features:**

- Torch guide is composed of straight edge rail and uses magnetic blocks.
- Blocks are slotted on three sides and can be positioned any place along the stainless cutting rail to accommodate any cutting job.
- Utilizes newest on/off magnet technology.

**Length:** 24 in



SKU	Width
496-MSG230	1-1/2 in

### Multi-Purpose Chariot Beveling Burning Guides

**Features:**

- Wheels can be adjusted for straight, irregular shapes, or circle cuts.
  - New design allows you to use the third wheel in conjunction with the Magnetic Torch Guide (MSG230) for precision burning or beveling edges of plate, beams, channels, and more.
  - The head of the new guide will now lock in place for straight 90 degrees or bevel cutting at 22.5 degrees, 37.5 degrees, and 45 degrees.
  - Universal bushing fits all conventional torches.
- Cutting Diam:** 2 in Circle; 7 in Beveling Inside and Outside - 36 in Circle; 34 in Beveling Inside; 37 in Beveling Outside



SKU
496-24219-CBG

### On/Off Magnetic Blocks for Burning Guides

**Features:**

- On/Off magnetic support blocks can be attached to any standard square or straight edge, up to 1/8 inch thick, to form your own burning guides.
- Blocks are machined from aluminum and have grooves on three sides.
- Included are set screws to easily adjust blocks on straight edges or squares.



SKU
496-MSB202



## Wizard Wraps

### Features:

- Wizard wrap, made from a non-asbestos, heat resistant material, has a nice thick edge for easier more accurate marking and helps keep your soapstone from slipping.
- 36" tape measure printed on the medium & large Wizard-limits the need for an extra tape measure.
- Circumference & Quartering scale printed on every wrap-limits the need for calculation.

SKU	Size Group	Width	Length	Pipe Capacity
496-WW-16	Small	2-5/8 in	30 in	1 in - 6 in
496-WW-17	Medium	3-7/8 in	60 in	2 in - 16 in
496-WW-17A	Large	5-1/4 in	120 in	6 in - 30 in
496-WW-19	Extra Large	7 in	180 in	12 in - 48 in

## Cylinder & Caps



## Refillable Propane Cylinders

### Features:

- Ideal for general soldering.
- Reliable.

**Capacity Vol.:** 16.4 oz

**Wt.:** 2.2 lb



SKU
189-327774



## Cylinder Caps

### Features:

- Sturdy cylinder cap with outstanding thread quality.
- Easy and quick installation and removal.



SKU	Gas Type
900-BSW-1957	High Pressure
900-BSW-1955	Acetylene



## Cylinder Caps

### Features:

- Easy access to the valve handle with no need to remove the protective cap and replace regulators each time access to cylinder is needed.
- Comes with a lock for extra security.
- Comes in safety yellow for added visibility.



SKU	Gas Type	Dia.
339-SC2FNNP-12	Acetylene	3-1/2 in
339-SC8FNNP-12	Oxygen	3-1/8 in



**WORTHINGTON CYLINDERS**  
A Worthington Industries Company

## MAP-Pro™ Hand Torch Cylinders

### Features:

- Ideal for medium to heavy soldering and brazing.
- Flame temperature in air is 3600 degrees F.

**Wt.:** 1.9 lb



SKU	Gas Type
870-332477	MAP-Pro™

## TX 9 Propane Cylinders

### Features:

- Ideal for general soldering.
- Flame temperature in air is 3450 degrees F.

**Capacity Vol.:** 14.1 oz

**Wt.:** 1.9 lb



SKU	Gas Type
870-304182	Propane

## Cylinder Pliers & Wrenches



## Box Tank Wrenches

### Features:

- Heavy-duty forged steel box tank wrench.
- Designed for B & MC acetylene valves.

**Material:** Steel



SKU	Opening Size	Length
900-00W5	3/16 in	3-1/8 in



## Tank Wrenches

### Features:

- Forged tank wrenches fit most valve stems and gas connections.
- Socket-holes are deep, smooth, and precisely sized for solid connections.
- Larger handles for firm grip and better leverage.

**Material:** Steel

SKU	Opening Size	Length
900-W1013	7/8 in; 1 1/8 in	8-1/2 in

## Dry Rod Ovens



## Electrode Ovens

### Features:

- Includes external thermostat control.
- Each oven is tested and heated to rated temperature before shipping.

**Voltage:** 110 V

**Digital Thermometer:** No

SKU	Capacity Wt.	Temp. Range	Watts
900-BW-ELECTRODE-OVEN-ET	10 lb	175° F - 300° F	80 W
900-20LB-ELECTRODE-OVEN	20 lb	85° F - 300° F	220 V
900-50LB-ELECTRODE-OVEN	50 lb	175° F - 300° F	220 V



## DryRod® Portable Electrode Ovens

### Features:

- Removable locking cord allows easy replacement.
- Spring latch tightly secures an insulated lid for maximum efficiency.

**Temp. Range:** - 300° F

**Chamber Size:** 2.88 in Dia x 19-3/4 in Depth

**Voltage:** 120 V/240 V

**Phase:** Single

**Cord Length:** 10 ft

**Digital Thermometer:** No

**Insulation Thickness:** 1-1/2 in

**Watts:** 60 W



SKU	Capacity Wt.	Size Electrode Handled
382-1205500	10 lb	14 in to 18 in



## DryRod® Type 300 Bench Electrode Ovens



### Features:

- Circular oven chamber promotes airflow and consistent heating.
- Thermostatic control.
- Ideal-sized bench oven for welding and industrial jobsites.

**Temp. Range:** 100° F - 550° F

**Chamber Size:** 18 in Dia x 19 in Depth

**Voltage:** 120 V/240 V

**Phase:** Single

**Cord Length:** 10 ft

**Digital Thermometer:** No

**Insulation Thickness:** 2 in

**Watts:** 1000 W

SKU	Capacity Wt.	Size Electrode Handled
382-1200200	400 lb	18 in

## Ground Clamps



## MGC Magnetic Ground Clamps

### Features:

- For heavier application.
- Heavy-duty pads come with classic rail profiles and a range of clamp openings that will meet most needs.
- Liquid aluminum paste can be shaped, brushed or sprayed.
- Dries to solid aluminum overnight and can be drilled, tapped, milled or ground.
- Thinner solvent for lab metal for painting/spraying.
- Ground clamps only need base surface metal for clamping.



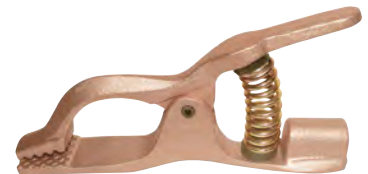
SKU	Amps	Cable Cap.
013-MGC-2	250	3-1/2 in



## Ground Clamps

### Features:

- Contoured handle lever for easy jaw opening.
- Large contact area assures positive grounding.
- Conductor body holds the cable securely.



SKU	Amps	Cable Cap.	Jaw Opening	Throat Depth
900-GC-300	300 A	2/0	1 in	3 in
900-LGC-300	300 A	2/0	1.5 in	3 in
900-TGC-300	300 A	3/0	2 in	3.86 in



## Magnetic Ground Clamps

### Features:

- Large contact area for optimum electrical contact.
- Superior gripping power.
- Insulated to prevent annealing.



SKU	Amps	Cable Cap.
900-MGC-300	300 A	2; 1/0

## Steel Ground Clamps

### Features:

- Galvanized steel plated.
- Large hex screw cable connection assures safe cable connection every time.
- Pure copper braided shunts allows both jaws to carry welding current.



SKU	Amps	Cable Cap.	Jaw Opening	Throat Depth
900-EG-200	200 A	#2	1 in	3.28 in
900-EG-300	300 A	1/0	1.5 in	4.57 in
900-EG-500	500 A	3/0	2 in	6.2 in



## Ground Clamps

### Features:

- Large contact areas, high-clamping pressure and long-levered handles for easy jaw opening.
- Clamps have fully insulated pivots and springs.
- The cable jacket is held securely inside the conductor body with a cable bar for improved holding ability and longer cable life.

**Jaw Opening:** 1-5/8 in



SKU	Amps	Cable Cap.
138-14731	300 A	1/0; 2/0



## Ground Clamps

### Features:

- Designed primarily to work in conjunction with the Tweco Roto-Ground device.
- May also be used for other high amperage grounding applications.
- Clamp is quickly attached or moved from one rotating weldment or fixture to the other without removing the Roto-Ground from it.
- Saves welding downtime.

**Jaw Opening:** 1-1/2 in

**Throat Depth:** 4 in



SKU	Amps	Cable Cap.
358-9205-1130	300 A	Ball Point to 3/0

## Rod Holders



## Rod Storage Tubes

### Features:

- Easy way to store and organize all of your filler metals properly.
- 1/8-inch nominal wall thickness for superior strength and durability.
- Neoprene seal keeps your rods air and water tight.
- Each rod storage tube comes with a key tag to identify the contents.
- Made of high impact polyethylene.



SKU	Capacity Wt.	Material	Color
900-BW14-BLU	10 lb	High Impact Polyethylene	Blue
900-BW14-BLA	10 lb	High Impact Polyethylene	Black
900-BW14-RED	10 lb	High Impact Polyethylene	Red
900-BW36-RED	10 lb	High Impact Polyethylene	Red
900-BW36-BLU	10 lb	High Impact Polyethylene	Blue

## Spark Lighter & Flints



## Lightnin' Bug® Torch Lighters

### Features:

- Multi-spark discharge.
- Ignites almost all industrial fuel gases, such as, oxy-acetylene, natural gas, propane, methane, and propylene.
- Never needs flints, batteries or recharging.

SKU
900-LIGHTNINBUG

## SL-3F Spark Lighters

### Features:

- Triple flint lighter.
- Consistent, reliable sparking.
- Long lasting.



SKU
900-SL-3F

## SL-E Spark Lighters

### Features:

- Single flint lighter.
- Consistent, reliable sparking.
- Long lasting.



SKU
900-SL-E





## Flints

### Features:

- Economically priced and designed for any of the Shurlite® family of flint lighters.
- Guaranteed to fit perfectly on Shurlite® lighters.
- Guaranteed to remain seated in the flint holder.
- Larger size for longer life.



SKU	Type
322-3001X	Single Flint Renewal
322-3011X	Single Flint Renewal
322-5003X	Tri-Flint Renewal
322-5012X	Tri-Flint Renewal

## Shurlite® Spark Lighters

### Features:

- Strong frame and rugged design.
- Options available for flat file with round cup design, single-flint round, triple-flint, and Shoot-a-lite flat pistol shaped spark lighters.



SKU	Type
322-3001	Universal Single-Flint Round File Spark Lighter; Flint Easily Replaced; Round File Spins; Square Hood
322-3011	Universal Single-Flint Round File Spark Lighter; Flint Easily Replaced; Round File Spins; Square Hood
322-4501	Three-Flint Spark Lighter; Heavy-Duty Steel Band; Strong Frame
322-5011	Triple-Flint Spark Lighter; Heav-Duty Steel Band; Strong Frame
322-710	Shoot-a-lite Spark Lighter; Flat Pistol Shape; Flint Remains Adjusted Automatically; Hardened Mechanical Parts; Zinc Chromate finish

## Tip Cleaners



## Tip Drill Sets

### Features:

- For cleaning welding tip and a variety of other fuel orifices and injectors.
- Knurled aluminum handle.
- Removable cap.

**Dia.:** 0.0635 in; 0.055 in; 0.0465 in; 0.0420 in; 0.0400 in; 0.0380 in; 0.0360 in; 0.0330 in; 0.0310 in; 0.0280 in; 0.0250 in; 0.0225 in

**Length:** 4.10 in

**Size Group:** 52; 54; 56; 58; 60; 62; 64; 66; 68; 70; 72; 74



SKU	Material	Includes
100-TD-3	Carbon Steel Drill; Aluminum Handle	(12) Even Size Drills; Handle with Pocket Clip



## Tip Cleaner Sets

### Features:

- Constructed of stainless steel.
- Rust-proof.
- Tapered ends for easy cleaning.
- Includes case with file.

**Dia.:** 0.014 in; 0.018 in; 0.021 in; 0.024 in; 0.028 in; 0.032 in; 0.035 in; 0.037 in; 0.039 in; 0.042 in; 0.048 in; 0.055 in; 0.062 in

**Size Group:** 6 to 26



SKU	Material	Includes
900-STC	Stainless Steel	(13) Cleaners; Case; File



## Tip Drill Sets

### Features:

- For cleaning welding tips and a variety of other fuel orifices and injectors.
- Drills store neatly in pin vise handle.
- Made in USA.

**Dia.:** 0.0635 in to 0.0225 in

**Size Group:** 52; 54; 56; 58; 60; 62; 64; 66; 68; 70; 72; 74



SKU	Material	Includes
422-KTDC	Carbon Steel Drill; Aluminum Handle	(12) Even Size Drills; Pin Vise; Pocket Clip



## Tip Cleaner Sets

### Features:

- Uniform ridges wipe and polish the orifice wall.
- Tapered ends allows smooth easy entry without scratching.
- Attractive aluminum case with a contained spool assembly.
- Smooth leader pilot.
- Tangle-free closed loops.

**Size Group:** 6 to 26

**Material:** Stainless Steel



SKU	Includes	Dia.
326-SP-4-CUT-PRO	(13) X-Long Cleaners; File	0.014 in; 0.018 in; 0.021 in; 0.024 in; 0.028 in; 0.032 in; 0.035 in; 0.037 in; 0.039 in; 0.042 in; 0.048 in; 0.055 in; 0.062 in
326-KING	(13) X-Long Cleaners; Case; File	0.014 in; 0.018 in; 0.021 in; 0.024 in; 0.028 in; 0.032 in; 0.035 in; 0.037 in; 0.039 in; 0.042 in; 0.048 in; 0.055 in; 0.062 in
326-SP-1	(13) Cleaners; Case; File; Skin Packed	0.014 in; 0.018 in; 0.021 in; 0.024 in; 0.028 in; 0.032 in; 0.035 in; 0.037 in; 0.039 in; 0.042 in; 0.048 in; 0.055 in; 0.062 in
326-SP-4	(13) X-Long Cleaners; Case; File; Skin Packed	0.014 in; 0.018 in; 0.021 in; 0.024 in; 0.028 in; 0.032 in; 0.035 in; 0.037 in; 0.039 in; 0.042 in; 0.048 in; 0.055 in; 0.062 in
326-STANDARD	(13) Cleaners; Case; File	0.014 in; 0.018 in; 0.021 in; 0.024 in; 0.028 in; 0.032 in; 0.035 in; 0.037 in; 0.039 in; 0.042 in; 0.048 in; 0.055 in; 0.062 in



## Tip Re-Surfacing Tools

**Features:**

- All aluminum housing and shaft.
- Thin tempered cutter.
- Flicks debris and re-surfaces tip.

**Dia.:** 5/8 in

**Length:** 2-3/8 in



SKU
326-SP-2000

## Water Circulators & Coolants



### Coolant Fluids

**Features:**

- Specially formulated for use in welding circulator and re-circulator systems.
- Recommended for all plasma, mig, tig, resistance welding systems, and general industrial applications.
- Low conductivity.

**Capacity:** 1 gal



SKU	Temp Range
905-16-25501	19° F to -7° C

## Welding Blankets, Curtains, & Rolls

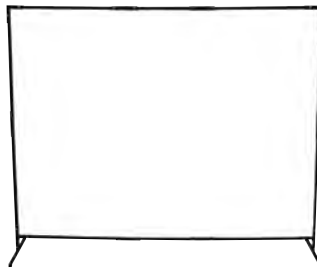


### Curtain Frames

**Features:**

- Freestanding, portable curtain frame is easy to assemble and can be used individually or in multiple units to form various configurations.
- Providing sturdiness and strength, square steel tubing and bolted bracket system prevent slipping and twisting.
- Combined with Best Welds safety fabrics, curtain frames provide protection for welding areas, machine shops, grinding and other safety applications.

**Material:** Steel



SKU	Length	Width
902-CURTAIN-FRAME	6 ft	6 ft



## Welding Blankets

**Features:**

- Protects against light sparks and spatter.
- Grommeted and hemmed with high temperature thread.
- Designed for use in areas where a fabric with high heat resistance is required.

**Material:** Fiberglass



SKU	Length	Width	Color
902-2025-18-6x6	6 ft	6 ft	White
902-2025-18-6x8	6 ft	8 ft	Tan
902-AC2300-24-6X8	6 ft	8 ft	Yellow

## Welding Curtains

**Features:**

- Heavy duty PVC designed to filter far/near UV radiation and blue light.
- Transparent curtains providing UV and blue light protection when visibility is necessary.
- Curtains are grommeted across top and in each corner.
- Hemmed with high temperature thread.

**Material:** PVC



SKU	Length	Width	Color
902-CURTAIN-6X6-ORG	6 ft	6 ft	Orange
902-CURTAIN-6X8-GRN	8 ft	6 ft	Green
902-CURTAIN-6X8-ORG	8 ft	6 ft	Orange



## Acrylic Coated Fiberglass Light-Duty Welding Blankets

**Features:**

- Excellent abrasion and tear resistance.
- Provides light-duty protection from most welding sparks, spatter, and slag.
- 300° F working temperature.
- Choose from roll or blanket types.
- Blankets have grommets to allow easy hanging in vertical applications.

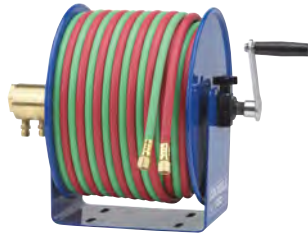


SKU	Length	Width	Material	Color
138-36151	150 ft	5 ft	23 oz Fiberglass	Yellow
138-36149	150 ft	5 ft	16 oz Fiberglass	Red

## Welding Cable & Hose Reels



### 100W Series Welding Hand Crank Twin Line Hose Reels



**Features:**

- Compact solid one piece, heavy gauge steel U-shaped frame with open drum design.
- External 90° full-flow dual ported brass swivel offering both connections from the same side of the reel.
- Durable proprietary CPC™ powder coat process.
- Rolled edges and ribbed discs provide strength and safety.
- Composite bearing for smooth rotation.
- Adjustable tension brake to prevent free-wheeling during operation, transport, or storage.
- Direct hand crank rewind.

**Length:** 12 in

**Width:** 18-3/4 in Overall

**Height:** 13 in

**Includes:** Hand Crank Hose Reel Only; 100 ft Oxygen-Acetylene Twin Line Welding Hose Sold Separately

SKU	Length	Width
170-112WL-1-100	12 in	18-3/4 in

### 100WCL Series Hand Crank Welding Cable Reels



**Features:**

- Compact hand crank cable reels are versatile and ideal for electrode and grounding lead applications.
- Save time and effort while increasing the safety of your work environment.
- Sturdy U-shaped frame and all steel construction.

**Cable Length:** 100 ft

**Hose Length:** 100 ft

**Length:** 12 in

**Width:** 18 in

**Height:** 13 in

SKU
170-112WCL-6-10
170-112WCL-6-20



### Hose Reels

**Features:**

- Professional grade heavy duty steel construction.
- Durable proprietary CPC™ powder coat finish.
- CNC robotically spun and ribbed discs with rolled edges provide strength, safety, and durability.
- Ideal solution for managing bulky twin line welding hose.

**Hose O.D.:** 17/32 in

**Hose Length:** 100 ft

**Length:** 24 in

**Width:** 10-1/4 in

**Height:** 25-1/2 in

**Wt.:** 88.95 lb

**Includes:** 18 in Inlet Assembly; Adjustable Check Ball



SKU	Hose Type
170-SHW-N-1100	Welding Hose



### Gas-Welding Hose Reels with Hose

**Features:**

- Reelcraft's exclusive dual swivel design offers and independent body manufactured from aluminum and hard coated for wear resistance.
- Leak prevention - the double sealed, special molded O-rings prevent leakage.
- The swivel inlets are both permanently identified with machined grooves on the gas side to assure proper installation.

**Hose O.D.:** 0.530 in

**Hose Length:** 50 ft

**Length:** 19-3/4 in

**Width:** 7-3/8 in

**Height:** 20-1/4 in

**Wt.:** 50 lb

**Includes:** T-grade hose and hose bumper



SKU	Hose Type
523-TW74500LPT	Welding Gas

## Welding Cables & Power Cables



### Welding Cable Assemblies



**Features:**

- Foot markings are printed on cable jacket so you can cut to the precise length without measuring.
- Flexible bare copper wire stranding.
- Tough jacket resists abrasion and chemicals.

**Amps:** Consult Ampacity Chart

**Temp Range:** -50° C (-58° F) - 105° C (221° F)

**Jacket Material:** EPDM

**Number of Conductors:** 1

**Insulation Thickness:** 0.08 in

**Voltage:** 600 V

**Insulation:** EPDM

**Conductor Material:** Stranded Copper

SKU	Cable/Wire Description	Includes
911-2/0-50-LC40	2/0 AWG x 50 ft	900-LC-40-BULK Male/Female Ball Point Connection

### Welding Cable Kits



**Features:**

- Chemical and abrasion resistant.
- Sequentially marked every foot.
- Made in USA.

**Style:** MBP

**Amps:** Consult Ampacity Chart

**Temp Range:** 58° F - 221° F

**Jacket Material:** EPDM

**Number of Conductors:** 1

**Insulation Thickness:** 0.08 in

**Voltage:** 600 V

**Insulation:** EPDM

**Conductor Material:** Copper

SKU	Cable/Wire Description	Includes
911-2/0-100-2mbp	2/0 AWG x 100 ft	1 Male Connector; 1 Female Connector; Welding Cable



### Welding Cables

**Features:**

- Custom lengths available.
- Custom assemblies available.
- Resistant to oil, chemicals, and solvents.

**Amps:** Consult Ampacity Chart

**Number of Conductors:** 1

**Voltage:** 600 V

**Insulation:** EPDM

**Conductor Material:** Stranded Copper



SKU	Cable/Wire Description	Temp Range	Insulation Thickness
<b>Jacket Material: TPE</b>			
911-1-500	1 AWG x 500 ft	58° F - 221° F	0.06 in
<b>Jacket Material: EPDM</b>			
911-2/0X100-BOXED	2/0 AWG x 100 ft	58° F - 221° F	0.08 in
911-1/0X50-BOXED	1/0 AWG x 50 ft	58° F - 221° F	0.08 in
911-1/0X100-BOXED	1/0 AWG x 100 ft	58° F - 221° F	0.08 in
911-1-250	1 AWG x 250 ft	-50° C (-58° F) - 105° C (221° F)	0.06 in
911-1/0-250	1/0 AWG x 250 ft	-50° C (-58° F) - 105° C (221° F)	0.08 in
911-1/0-500	1/0 AWG x 500 ft	-50° C (-58° F) - 105° C (221° F)	0.08 in
911-2-250	2 AWG x 250 ft	-50° C (-58° F) - 105° C (221° F)	0.06 in
911-2-500	2 AWG x 500 ft	-50° C (-58° F) - 105° C (221° F)	0.06 in
911-2-500-RED	2 AWG x 500 ft	-50° C (-58° F) - 105° C (221° F)	0.06 in
911-2/0-250	2/0 AWG x 250 ft	-50° C (-58° F) - 105° C (221° F)	0.08 in
911-2/0-500	2/0 AWG x 500 ft	-50° C (-58° F) - 105° C (221° F)	0.08 in
911-4-250	4 AWG x 250 ft	-50° C (-58° F) - 105° C (221° F)	0.06 in
911-4/0-250	4/0 AWG x 250 ft	-50° C (-58° F) - 105° C (221° F)	0.08 in

### Whip Cables

**Features:**

- Class M stranding provides the ultimate in flexibility.
- EPR insulation provides outstanding cut and abrasion resistance.
- Resistant to oil, chemicals, water and solvents.

**Amps:** Consult Ampacity Chart

**Temp Range:** -50° C (-58° F) - 105° C (221° F)

**Jacket Material:** EPDM

**Number of Conductors:** 1

**Insulation Thickness:** 0.08 in

**Voltage:** 600 V

**Insulation:** EPDM

**Conductor Material:** Stranded Copper



SKU	Cable/Wire Description	Includes
911-10615-250	1/0 AWG x 250 ft	Whip Cable Only



## Welding Clamps, Spreaders & Holders



### Multi-Purpose Magnetic Holders

#### Features:

- Enables fast and accurate holding of any ferrous object.
- Can be utilized as double-sided holder for welding and assembly work.
- Will hold sheets or tubes at 45°, 90° and 135° angles.
- Compact design allows use in tight places.



SKU	Capacity Wt.	Length	Width	Height
900-M-063	80 lb	6.3 in	4 in	0.63 in
900-M-065	95 lb	9 in	5 in	0.88 in
900-M-061	45 lb	4-7/10 in	3-2/5 in	14/50 in



### MagSquare Holders

#### Features:

- On/Off Magswitch magnet control ensures precise placement.
- Turns all the way off and stays clean.
- Machined at 90 degrees.
- Magnetic grip on five sides and strong on three sides.
- Pipe notch.
- Use MagSquares to mount workholding jigs.
- Pre-tapped holes on all sides for mounting.
- Magnetic device can be turned on and off with a simple half turn of a knob.



Length: 1.90 in

Width: 1.20 in

Height: 2.25 in

SKU	Capacity Wt.
474-8100494	165 lb

## Welding Hose & Compressed Gas Fittings



### Quick Connector Sets

#### Features:

- Provides fast, reliable, and easy setup for welding, cutting, and brazing applications.
- Ensures pressure-tight connections made in seconds.
- Built-in automatic reset check valves prevent reverse flow of gas by cutting off the gas under back pressure.
- Oxygen and fuel gas models are not interchangeable in order to prevent wrong connections.
- Color-coded for fast, efficient, and safe handling.
- Maximum working pressure 29 psi for fuel gases and 145 psi for oxygen.

Connection Type: B-Size Male/Female



SKU	Gas Type
331-QC-HTPRSP	Fuel Gases LH; Oxygen RH
331-QC-RHPRSP	Fuel Gases LH; Oxygen RH



### Barbed Hose Nipples

#### Features:

- Made from brass to ensure functionality and durability.
- Can accommodate up to 200 psi of pressure.



SKU	Size	Connection Type	Pressure	Hose I.D.
312-17	B-Size	B-Size Connection Nipple	200 psig	1/4 in
312-18	B-Size	Male	200 PSIG	3/16 in
312-20	B-Size	B-Size Connection Nipple	200 psig	3/8 in

### Brass Body Valves for Non-Corrosive Gases

#### Features:

- Made from brass to ensure functionality and durability.
- Use these reliable non corrosive gas flow valves with all non-corrosive gases including oxygen.
- Can withstand elevated pressures.

Pressure: 200 PSIG



SKU	Gas Type	Size
312-208-F	Acetylene/F. Gases	B-Size



## Brass Hose Adaptors

### Features:

- Made from brass to ensure functionality and durability.
- Can accommodate up to 200 psig of pressure.
- Threads have been manufactured to the highest standards to ensure a tight and secure fitting.



SKU	Gas Type	Size	Connection Type	Thread Direction	Pressure
312-103	Oxygen	A-Size; B-Size	Male/Female	RH	200 PSIG
312-104	Acetylene; Fuel Gases	A-Size (M); B-Size LH (F)	Male/Female	LH	200 psig
312-105	Oxygen	B-Size (M); A-Size RH (F)	Male/Female	RH	200 psig
312-106	Acetylene; Fuel Gases	B-Size (M); A-Size LH (F)	Male/Female	LH	200 psig
312-244	Oxygen	B-Size	Female/Male	RH	200 PSIG
312-253	Oxygen	B-Size	Male/Male	RH	200 PSIG

## Brass Hose Ferrules

### Features:

- Made from brass to ensure functionality and durability.
- Brass hose ferrules provide fast and semi-permanent attachment of hose barbs and most low pressure general purpose hoses.



SKU	Dia.	Length
312-3588	0.562 in	0.75 in
312-7322	0.500 in	1 in
312-7323	0.525 in	1 in
312-7325	0.562 in	1 in
312-7326	0.593 in	1 in
312-7329	0.687 in	1 in
312-769	0.450 in	0.562 in

## Brass Hose Splicers

### Features:

- Made from brass to ensure functionality and durability.
- Can accommodate up to 200 psig of pressure.

**Connection Type:** Barb/Barb

SKU	Pressure	Hose I.D.
312-44	200 psig	1/4 in
312-45	200 PSIG	3/16 in
312-47	200 psig	3/8 in

## Hose Couplers

### Features:

- Made from the highest quality material to ensure functionality and durability.
- Can accommodate up to 200 psig of pressure.

**Connection Type:** Male/Male

**Pressure:** 200 psig



SKU	Gas Type	Size	Thread Direction
312-30	Oxygen	B-Size to B-Size	RH/LH
312-31	Acetylene/Fuel Gases	B-Size to B-Size	LH



## Hose Nuts

### Features:

- Made from the highest quality material to ensure functionality and durability.
- Can accommodate up to 200 psig of pressure.

**Connection Type:** Female



SKU	Gas Type	Size	Thread Direction	Pressure
312-10	Fuel Gas	A-Size	LH	200 PSIG
312-7	Oxygen	B-Size	RH	200 psig
312-8	Acetylene/Fuel Gas	B-Size	LH	200 psig

## Hose Repair Kits

### Features:

- Hose repair kits come in convenient durable, plastic case with full color label and description chart.



SKU	Size	Hose I.D.
312-CK-24	B-Size	3/16 in; 1/4 in Plain 5111
312-CK-26	B-Size	1/4 in
312-CK-30	B-Size Inert	1/4 in
312-CK-5	B-Size	3/16 in; 1/4 in Plain 5111
312-CK-6	B-Size	5/16 in; 3/8 in Plain 5111

## Inert Arc Adaptors

### Features:

- Made from brass to ensure functionality and durability.
- Can accommodate up to 200 psig of pressure.

**Connection Type:** Male/Female

**Thread Direction:** NPT (M) to RH (F)

**Pressure:** 200 psig



SKU	Gas Type	Size
312-AW-15A	Inert Gas	B-Size 5/8 in-18 RH (F)

## Inert Arc Hose and Torch Adaptors

### Features:

- Made from brass to ensure functionality and durability.
- Can accommodate up to 200 psig of pressure.

**Pressure:** 200 psig



SKU	Gas Type	Size	Connection Type	Thread Direction
312-AW-407	Inert Gas	B-Size 5/8 in-18 RH (F)	Male/Female	RH (M) to RH (F) 90°
312-AW-427	Inert Gas	B-Size 5/8 in-18 RH (M)	Male/Male	RH (M) to RH (M)



## Inert Arc Hose Couplers

### Features:

- Made from brass to ensure functionality and durability.
- Can accommodate up to 200 psig of pressure.

**Connection Type:** Female/Female

**Pressure:** 200 psig



SKU	Gas Type	Size	Thread Direction
312-AW-430	Inert Gas	B-Size 5/8 in-18 RH (F)	RH (F) to RH (F)
312-AW-431	Inert Gas	B-Size 5/8 in-18 RH (F)	LH (F) to LH (F)

## Inert Arc Nipples

### Features:

- Made from brass to ensure functionality and durability.
- Can accommodate up to 200 psig of pressure.
- Use these arc nipples to repair or make a new hose to attach to the shielding gas (or cooling) lines.

**Connection Type:** Barb

**Pressure:** 200 psig



SKU	Gas Type	Size	Hose I.D.
312-AW-17	Inert Gas	B-Size 5/8 in-18	1/4 in
312-AW-18	Inert Gas	B-Size 5/8 in-18	3/16 in

## Inert Arc Nuts

### Features:

- Made from brass to ensure functionality and durability.
- Can accommodate up to 200 psig of pressure.

**Connection Type:** Male



SKU	Gas Type	Size	Thread Direction	Pressure
312-AW-14	Water	B-Size	LH	200 PSIG
312-AW-14A	Inert Gas	B-Size 5/8 in-18 RH (M)	RH (M)	200 PSIG

## Inert Arc Power Cable Adapters

### Features:

- Inert arc power cable adapters.
- Brass (TIG) pressures to 200 psig.

**Pressure:** 200 psig



SKU	Gas Type
312-AW-28A	Inert Gases



## Male NPT Outlet Adaptors for Manifold Pipelines

### Features:

- Made from the highest quality material to ensure functionality and durability.
- Provides a reliable seal during welding applications.

**Connection Type:** Female/Male

**Pressure:** 3000 psig



SKU	Gas Type
312-B-70	Argon; Helium; Nitrogen

## Manifold Block Assemblies

### Features:

- Durable welding accessory for manifold needs.
- Use with any pigtails having CGA connections.

**Connection Type:** Female Outlets

**Thread Direction:** RH

**Pressure:** 3000 psig



SKU	Gas Type
312-MB-70	Argon; Helium; Nitrogen

## Manifold Coupler Tees

### Features:

- Made from the highest quality material to ensure functionality and durability.
- Provides a reliable seal.

**Connection Type:** Male

**Thread Direction:** RH

**Pressure:** 3000 psig



SKU	Gas Type
312-T-92	Argon; Helium; Nitrogen

## Pipe Thread Couplings

### Features:

- Made from the highest quality material to ensure functionality and durability.
- Can withstand elevated pressures.

**Connection Type:** Female/Female

**Pressure:** 3000 psig



SKU
312-BF-4HP



## Pipe Thread Hex Nipples

### Features:

- Made from the highest quality material to ensure functionality and durability.
- Use to connect other welding hose and compressed gas fittings.

**Connection Type:** Male

**Pressure:** 3000 psi



SKU
312-B-4HP

## Pipe Thread Tees

### Features:

- Made from high-quality material to ensure functionality and durability.
- Can withstand elevated pressures.
- Used to join poly pipe together.

**Connection Type:** 3-Way Female

**Pressure:** 3000 psig



SKU
312-BFT-4HP

## Regulator Nuts

### Features:

- Regulator nuts to fit a full range of gas service requirements.

**Pressure:** 500 psig



SKU	Gas Type
312-622-2	Carbon Dioxide

## Stainless Steel Flexible Pigtails

### Features:

- 100% tested and cleaned for oxygen.
- Three-inch minimum bend radius.
- Individually poly bagged.

**Connection Type:** Both Female

**Pressure:** 3000 psig



SKU
312-PF2-4-36
312-PF2-4-72



## Valved Y Connections

### Features:

- Precision shut off valves.
- For use of two cutting and/or welding torches at once.

**Pressure:** 200 psig



SKU	Gas Type	Size	Connection Type	Thread Direction
312-111	Oxygen	B-Size (F) to B-Size (M)	Female/Male	RH
312-112	Acetylene/Fuel Gases	B-Size (F) to B-Size (M)	Female/Male	LH
312-411	Inert Gas	B-Size (M)	Male/Female	RH

## Y Connections

### Features:

- Made from brass to ensure functionality and durability.
- Can accommodate up to 200 psig of pressure.

**Thread Direction:** RH

**Pressure:** 200 psig



SKU	Gas Type	Size	Connection Type
312-101	Oxygen	B-Size (F) to B-Size (M)	Female/Male
312-401	Inert Gas	B-Size (M) to B-Size (F)	Male/Female

## Welding Hoses



## Grade R Single-Line Welding Hoses

### Features:

- High quality Grade R single-line welding hoses.
- Grade R welding hoses are designed for carrying acetylene or oxygen to welding equipment.
- Green hose carries oxygen to welding equipment.
- Red hose carries acetylene.
- Hose cover resists oils.

**Gas Type:** Oxygen



SKU	Grade	Pressure	Hose I.D.	Length
907-3/8X1-GRN	R	200 psi	3/8 in	700 ft
907-1/4X1-GRN-RL	R	200 psi	1/4 in	800 ft





## Grade R Twin-Line Welding Hoses

### Features:

- High quality Grade R twin-line welding hoses.
- Green hose carries oxygen to welding equipment.
- Red hose carries acetylene.
- Hose cover resists oils.



SKU	Grade	Pressure	Hose I.D.	Length	Gas Type
907-LB254	R	200 psi	1/4 in	25 ft	Acetylene Only
907-LB1004	R	200 psi	1/4 in	100 ft	Acetylene Only
907-LB504	R	200 psi	1/4 in	50 ft	Acetylene Only
907-LB123	R	200 psi	3/16 in	12.5 ft	Acetylene; Oxygen
907-LB253	R	200 psi	3/16 in	25 ft	Acetylene; Oxygen
907-LB1/4-TWIN-RL	R	200 psi	1/4 in	800 ft	Acetylene; Oxygen

## Grade T Twin-Line Welding Hoses

### Features:

- High quality Grade T twin-line welding hoses.
- Green hose carries oxygen to welding equipment.
- Red hose carries fuel gases.
- Hose cover resists flames and oils.

**Gas Type:** Fuel Gases; Oxygen



SKU	Grade	Pressure	Hose I.D.	Length
907-T504	T	200 psi	1/4 in	50 ft
907-T1008	T	200 psi	3/8 in	100 ft
907-T1004	T	200 psi	1/4 in	100 ft
907-T254	T	200 psi	1/4 in	25 ft
907-T508	T	200 psi	3/8 in	50 ft
907-TR1/4-TWIN-RL	T	200 psi	1/4 in	800 ft

## Inert Gas Welding Hoses

### Features:

- Inert gas single-line welding hose.
- Cover is resistant to abrasion, heat, mild chemicals, and ozone.

**Hose I.D.:** 1/4 in

**Length:** 50 ft

**Gas Type:** Argon



SKU	Grade	Pressure
907-1/4X1-GRN-50-ARGON	R	200 psi

## Welding Umbrellas



## Heavy-Duty Construction Umbrellas

### Features:

- Heavy-duty construction umbrellas.
- Reinforced seams.
- Tilt function.
- Ideal for welding, construction sites and line work.

**Material:** Heavy-Duty Vinyl

SKU	Height
160-UM7VB	7 ft

## WELDING & CUTTING MACHINES

### Plasma Cutter Parts



## Compressed Air Filters

### Features:

- Mount at point of use downstream of Motor Guard M-26/60 Filter.
- Removes oil vapor from air using activated carbon.
- The ultimate final filter for plasma cutters and other critical applications.

**Max. Flow @ Pressure:** 2700 SCFH @ 80 psi



SKU	Pressure	Pipe Size
396-M-26	125 psi	1/4 in (NPT)

## Filter Elements

### Features:

- Filter elements increase the efficiency and tip life of plasma cutter.
- Elements remove moisture and oil aerosols from compressed air line.
- Will isolate particles as small as .01 microns.

**Max. Flow @ Pressure:** 6000 SCFH @ 80 psi



SKU	Pressure	Pipe Size
396-M-723	125 psi	1/2 in (NPT)



**BOSCO**  
**BROS., L.L.C.** NORCO, LA