

BOSCO
BROS., L.L.C. NORCO, LA



JANSAN CATALOG

VOLUME II

Table of Contents

| | |
|---------------------------------------|----|
| Cleaning Products | 3 |
| Cleaners & Degreasers | |
| Cups & Lids | 3 |
| Food Containers | 3 |
| Paper & Plastic Bags | 3 |
| Brushing & Sweeping Products | 3 |
| Brush & Broom Handles | |
| Brushes & Brooms | |
| Dust Pans | |
| Cleaning Products | 8 |
| Detergents | |
| Dishwashing Cleaners | |
| Disinfectants | |
| Drain Openers | |
| Floor & Carpet Cleaners | |
| Furniture Polish | |
| Glass Cleaners | |
| Odor Neutralizers | |
| Urinal & Bowl Products | |
| Floor & Carpet Care | 16 |
| Mats | |
| Mopping Products | 16 |
| Mop & Squeegee Handles | |
| Mop Buckets | |
| Mop Heads | |
| Squeegees | |
| Pails & Tubs | 19 |
| Personal Hygiene | 19 |
| Hand Cleaner Dispensers & Accessories | |
| Hand Cleaners | |
| Hand Sanitizers | |
| Vacuum Parts & Accessories | 24 |
| Vacuums | 26 |
| Waste Receptacles | 27 |
| Cigarette Disposal | |
| Dollies | |
| Trash Can Liners | |
| Trash Cans | |
| Trash Pickers & Grabbers | |
| Wiping Products | 29 |
| Sponges & Hand Pads | |
| Tissues | |
| Towels & Wipers | |



CLEANING PRODUCTS

Cleaners & Degreasers



Distilled White Vinegar Household Cleaners

Features:

- Environmentally-friendly household cleaner.
- Crisp and clear product available in various acidities.



| SKU |
|------------|
| 863-600611 |



Floor and All-Purpose Cleaners

Features:

- High levels of surfactant and builders combined to cut through tough grease.
- Easy-rinse powder formula is ideal for quarry tile.
- Cleans floors, walls, pots and pans.
- Can be used with chlorine bleach and contains no phosphates.

Removes: Dirt;Grime;Stains

Chemical Compound: Alkyl Benzene Sulfonate;Sodium Carbonate



| SKU | Capacity Vol. |
|-----------|---------------|
| 608-02364 | 36 lb |

CUPS & LIDS



Foam Cups

Features:

- Insulated for hot or cold beverages.
- Keeps hands comfortable on the outside.
- Ideal for coffee, tea, hot chocolate, juice and soft drinks.

Material: Expanded Polystyrene



| SKU | Capacity Vol. | Dia. | Uses Lid |
|-----------|---------------|----------------------------|---|
| 863-12J12 | 12 oz | 3.5 in Top; 2.1 in Base | 12JL; 12SL; 12UL; 12FTL; 12FTLS; 12EL |
| 863-16J16 | 16 oz | 3.7 in Top; 2.4 in Base | 16JL; 16SL; 16UL; 16FTL; 16FTLS; 16EL; 16ELBLK; 16CL; 16CLBLK; 16LCD; 16LCDH; 16LCDHX |

FOOD CONTAINERS



Solo® Double Wrapped Paper Buckets



Features:

- Solo® paper buckets are a great option for dry snack items – or they can even be used as paint buckets.
- Paired with clear dome or paper disc lids, these sturdy containers are perfect for munching on the go.

Size: 8.8 in Top; 6.4 in Base

| SKU | No. of Compartments | Capacity Vol. |
|----------|---------------------|---------------|
| 863-10T1 | 1 | 165 oz |

PAPER & PLASTIC BAGS



Double Zipper Storage Bags

Features:

- Reclosable, double-zipper food storage bags with two-layer seal locks out air and keeps freshness in.
- Write-on label for date and ID.
- Self dispensing commercial bulk pack.



| SKU | Bag Size | Width | Quantity |
|------------|----------|-----------|------------------|
| 889-682256 | 1 Quart | 7 in | 500 Bags per Box |
| 889-682257 | 1 gal | 10-1/2 in | 250 Bags per Box |
| 889-682253 | 2 gal | 13 in | 100 Bags per Box |

BRUSHING & SWEEPING PRODUCTS

Brush & Broom Handles



Wood Tapered Handles

Features:

- Replacement handle.
- Fits most push brooms.

Handle Diameter: 1-1/8 in

Handle Type: Tapered Handle

Used With: Brushes; Push Brooms

| SKU | Material | Handle Length |
|------------|---------------------------|---------------|
| 103-5T-HDL | Southern Yellow Pine Wood | 60 in |



Wood Threaded Handles



Features:

- Replacement handle.
- Fits most push brooms.

Handle Diameter: 15/16 in

Handle Type: Threaded Handle

Used With: Brushes; Paint Rollers; Push Brooms

| SKU | Material | Handle Length |
|------------|---------------------------|---------------|
| 103-5S-HDL | Southern Yellow Pine Wood | 60 in |

Wooden Broom Handles



Features:

- Smooth lacquered hardwood handle.
- Durable wood threaded tip.

Handle Diameter: 15/16 in

Handle Type: Threaded Metal

| SKU | Material | Handle Length |
|-------------|----------|---------------|
| 102-5HDLEMT | Hardwood | 60 in |



Tapered Handles

Features:

- Smooth-sanded hardwood handle.
- Rounded top end, tapered tip on the other.
- Rugged and durable in extreme temperatures.

Handle Diameter: 1-1/8 in

Handle Type: Tapered

Wt.: 0.63 lb

| SKU | Material | Handle Length |
|----------|---------------------------|---------------|
| 455-C-60 | Straight-Grained Hardwood | 60 in |

Threaded Handles



Features:

- Grained hardwood handle.
- Smooth, rounded end.
- Durable, crack-resistant.

Handle Length: 50 in

Material: Hardwood; Metal

| SKU | Handle Diameter | Handle Type | Wt. |
|----------|-----------------|--|---------|
| 455-B-60 | 1-1/8 in | Threaded Metal | 1.58 lb |
| 455-M-60 | 15/16 in | Clear Lacquered Hardwood; Threaded Metal | 0.92 lb |



Wooden Handles



Features:

- Quality hardwood construction with clear lacquer finish.
- Durable, splinter-resistant handle is built to last a long time.
- Rounded end for comfortable grip.

Handle Diameter: 15/16 in

Handle Type: Threaded Metal

Used With: Floor and Garage Brushes

Wt.: 13.5 lb

| SKU | Material | Handle Length |
|-----------|-----------------|---------------|
| 804-44300 | Hardwood; Metal | 60 in |

Brushes & Brooms



Economy Brooms



Features:

- Mix of grass and corn fibers, ideal for light sweeping tasks.
- A triple-stitched headband securely holds bristles in place.
- A sturdy handle provides a firm grip while sweeping.

Handle Length: 42 in

Bristle Length: 14 in

| SKU | Bristle Material |
|------------|------------------|
| 103-E20-DZ | Corn/Grass Mix |

Warehouse Brooms



Features:

- Ideal for heavy-duty sweeping tasks.
- Reliable broom corn bristles are sturdy, yet flexible.

Handle Length: 42 in

Bristle Length: 20 in

| SKU | Bristle Material |
|------------|------------------|
| 103-W36-DZ | 80/20 Corn/Sotol |



Whisk Brooms

Features:

- 100% corn-bristle hand broom makes cleaning up easier.
- Stitched headband keeps bristles contained and adds strength.
- Metallic hand-grip adds convenience and durability.

Bristle Length: 12 in



| SKU | Includes | Bristle Material |
|-----------|-----------------------------|------------------|
| 103-500WB | Metal Cap with Hanging Ring | 100% Broom Corn |



Deck Scrub Brushes

Features:

- One tapered and one threaded handle hole.
- Requires tapered or threaded handle.

Block Material: Hardwood

Block Finish: Smooth Tumbled

Bristle Length: 2 in

Block Length: 10 in



| SKU | Includes | Bristle Material |
|-----------|-----------|------------------|
| 455-10DTL | No Handle | White Tampico |

Dope Brushes

Features:

- Hang-up hole in handle.
- Useful for applying pipe dope and other industrial applications.

Block Material: Wood

Handle Length: 16 in

Bristle Length: 2-1/2 in

Block Length: 2-1/2 in



| SKU | Includes | Bristle Material |
|------------|--------------|--------------------|
| 455-2-DOPE | Tapered Ends | Grey Tampico Fiber |



Fender Wash Brushes

Features:

- Safe, scratch-resistant natural bristles (except for chrome or clear coat paint surfaces).
- Ideal for cleaning fenders, wheels and wheel wells.
- Hang-up hole in handle.

Block Material: Hardwood

Handle Length: 20 in

Bristle Length: 2 in

Block Width: 3 in



| SKU | Bristle Material |
|---------|------------------|
| 455-20T | White Tampico |

Flagged Plastic Fill Line Floor Brushes

Features:

- Half-round block.
- Will sweep finest dust or grit.
- Use for sweeping smooth highly polished floors, varnished wood or smooth concrete.

Block Material: Hardwood

Block Finish: Clear Lacquered

Handle Length: 60 in

Bristle Length: 3 in

Block Length: 24 in



| SKU | Includes | Bristle Material |
|----------|-------------|----------------------------|
| 455-3724 | M-60 Handle | Silver Flagged-Tip Plastic |

OSHA-Orange Plastic Street Brooms

Features:

- Filled with OSHA orange poly corn for high visibility use.
- Will not absorb odors, mildew, rot or discolor.
- Will not absorb water and rinses clean.
- Wide flare on ends allows close to curb sweeping.
- Use for wet or dry sweeping where a rugged broom is required.

Block Material: Hardwood

Block Finish: Smooth Sanded

Bristle Length: 5 in

Block Length: 16 in



| SKU | Bristle Material |
|------------|-----------------------|
| 455-1316-0 | OSHA Orange Poly Corn |



Poly Fill Line Floor Brushes

Features:

- Good on rough or smooth concrete, asphalt, wood and more.
- Dark red coarse gauge polystyrene plastic in center rows.
- Fine gauge black plastic in border rows.
- Recommended for wet or dry sweeping.
- Center rows sweep the heavy debris, while the border sweeps the finer dirt.

Block Material: Hardwood

Block Finish: Clear Lacquered

Handle Length: 60 in

Bristle Length: 3 in

Block Length: 24 in



| SKU | Includes | Bristle Material |
|----------|-------------|----------------------------------|
| 455-1124 | M-60 Handle | Coarse Gauge Polystyrene Plastic |

Utility Brushes

Features:

- Angled handle protects hands and knuckles.
- Finger grip handle.
- Hang-up hole in handle.

Block Material: Plastic

Bristle Length: 2 in

Block Length: 20 in



| SKU | Bristle Material |
|----------|------------------|
| 455-73-N | White Nylon |



Rubbermaid® Angle Brooms

Features:

- Cut and shaped for easy sweeping; ideal for cleaning hard-to-reach areas.
- Flagged, long-lasting, acid-resistant polypropylene gray fill bristles.
- Permanent fusion set bristles won't pull out.

Block Material: Plastic

Handle Length: 46-7/8 in

Bristle Length: 6-3/4 in

Block Length: 10-1/2 in



| SKU | Bristle Material |
|------------------|------------------|
| 640-FG638500GRAY | Polypropylene |



Angle Brooms

Features:

- High-quality synthetic material gives flagged plastic bristles extra strength.
- Angled trim allows access to corners, under low cabinets and other hard-to-reach areas.
- Sturdy broom is durable enough for all commercial and industrial applications.

Handle Length: 48 in

Bristle Length: 6 in to 7-1/2 in



| SKU | Bristle Material |
|-----------|------------------|
| 804-44305 | Flagged Plastic |

Boot Cleaning Brushes

Features:

- Ideal for cleaning the soles of footwear.
- Reliable and efficient brush at a value price.

Block Material: Wood

Block Length: 9 in

Block Width: 6 in



| SKU | Bristle Material |
|-----------|------------------|
| 804-44391 | Nylon |

Flagged Silver Polystyrene Fine Sweep Brushes

Features:

- Flagged tips pick up dust and fine dirt on smooth surfaces.
- Wide flare ends for sweeping close to curb and walls.
- Lacquered hardwood block.
- 3 in trim length.
- Ideal for tile, wood, linoleum, marble, ceramic tile and smooth concrete.

Block Material: Hardwood

Block Finish: Lacquered

Bristle Length: 3 in

Block Length: 24 in



| SKU | Bristle Material |
|-----------|----------------------------|
| 804-42042 | Flagged Silver Polystyrene |



Palmyra Fill Brushes



Features:

- For heavy-duty sweeping of concrete, sidewalks, garage and factory floors.
- Wet or dry applications.

Block Material: Hardwood

Block Finish: Lacquered

Bristle Length: 4 in

Block Length: 24 in

Block Width: 2-1/2 in

| SKU | Bristle Material |
|-----------|------------------|
| 804-42023 | Palmyra |

Perma-Sweep™ Floor Brushes



Features:

- Crack-resistant, foam-block broom head is constructed for durability and versatility.
- Non-absorbent synthetic bristles resist acid, oil and bacteria.
- Effective for wet or dry sweeping applications.
- Lighter than hardwood blocks.
- Color-coded bristles.

Block Material: Synthetic Foam

Block Finish: Matte

Bristle Length: 3 in

Block Length: 24 in

| SKU | Bristle Material |
|-----------|---------------------------|
| 804-42164 | Flagged Green Polystyrene |

Polypropylene Medium Sweep Brushes



Features:

- For general purpose sweeping on semi-smooth surfaces.
- Ideal for wood, smooth concrete, asphalt and factory/shop floors.
- Lacquered hardwood block resists moisture and helps prevent cracking, increasing brush life.

Block Material: Hardwood

Block Finish: Lacquered

Bristle Length: 3 in

Block Length: 36 in

Block Width: 2-1/2 in

| SKU | Includes | Bristle Material |
|-----------|----------|---------------------|
| 804-42095 | Brace | Black Polypropylene |



Pro-Flex Sweeps

Features:

- Quick assembly and unbreakable.
- Strongest Sweep in the Market.
- Convenient Scrapper attaches handle to sweep head for display and shipping purposes.

Block Material: Hardwood

Block Finish: Lacquered

Handle Length: 60 in

Bristle Length: 3 in

Block Length: 24 in

Block Width: 2-1/2 in



| SKU | Bristle Material |
|-----------|---|
| 804-44600 | Flagged Grey Polystyrene Border; Stiff Black Polypropylene Center |

Street Brooms



Features:

- For general street sweeping and parking lots.
- Wide flared ends for sweeping close to curbs and walls.
- Wet or dry applications.

Block Material: Hardwood

Block Finish: Unfinished

Bristle Length: 6-1/4 in

Block Length: 16 in

| SKU | Bristle Material |
|-----------|------------------------|
| 804-42032 | Bass and Palmyra Blend |

Tampico Medium Sweep Brushes



Features:

- General purpose floor brush cleans efficiently and thoroughly.
- Use for sweeping semi-smooth surfaces.
- Lacquered hardwood block resists moisture and help prevent cracking, increasing brush life.

Block Material: Hardwood

Block Finish: Lacquered

Bristle Length: 3 in

Block Length: 24 in

Block Width: 2-1/2 in

| SKU | Includes | Bristle Material |
|-----------|----------|------------------|
| 804-42008 | Brace | Black Tampico |



Upright & Whisk Brooms

Features:

- Metal top for added durability.
- Ideal for sweeping floors, reaching into corners, cleaning ceilings and more.

Handle Length: 39 in

Bristle Length: 18 in



| SKU | Bristle Material |
|-----------|--------------------|
| 804-44008 | Broom Corn; Rattan |

Dust Pans



Dust Pans

Features:

- Baked enamel finish is durable with beveled edge.
- Corrugated ribs to add strength.

Material: 20 Gauge Steel



| SKU | Width |
|-------|-------|
| 455-6 | 12 in |



Executive Series™ Lobby Pro® Dustpans

Features:

- Smooth rear wheels improve wear resistance.
- Will not stain, discolor, or absorb odors.
- Dustpan constructed of durable injection-molded plastic with vinyl coated metal handle.
- Reduces strain on staff by minimizing bending and stooping.

Material: Plastic



| SKU | Length | Width |
|-----------------|-----------|-----------|
| 640-FG253100BLA | 12-3/4 in | 11-1/4 in |

CLEANING PRODUCTS

Detergents



Fabric Softener Sheets

Features:

- Prevents static cling on garments as they come out of the dryer and as they are worn.
- Softens clothes with a fresh scent.
- Helps repel lint and hair.

Quantity: 160 Sheets per Box



| SKU |
|-----------|
| 608-80168 |



Liquid Laundry Detergents

Features:

- High-powered, grease-cutting formula removes tough institutional stains.
- Fluorescent whitening agents help maintain whiteness and brightness.
- Phosphate-free.
- Safe for septic systems.



| SKU | Capacity Vol. |
|-----------|---------------|
| 608-40217 | 92 oz |

Dishwashing Cleaners



Manual Pot & Pan Dish Detergents

Features:

- The grease-fighting power of Dawn® dish soap, specifically formulated for tough business jobs.
- Long lasting suds provide greater cleaning capacity with less sink changeover.



| SKU | Capacity Vol. | Packing Type |
|-----------|---------------|--------------|
| 608-45112 | 38 oz | Bottle |
| 608-57445 | 1 gal | Bottle |
| 608-70681 | 5 gal | Pail |

Disinfectants



All-Purpose Cleaners

Features:

- Cleans, deodorizes and shines hard, nonporous surfaces: no-wax floors, tiles, walls, sinks, countertops, microwave, refrigerator, stoves, range hoods, deep fryers and more.
- The intense scent of real clean is the reward you get every time you scrub your floors and dig into those corners.

Capacity Vol.: 144 oz



| SKU | Odor/Scent |
|---------------|------------|
| 863-CLOX60606 | Pine |
| 863-CLOX60607 | Lemon |



Clean-Up® Cleaners with Bleach

Features:

- This all in one Clorox bleach spray cleans, disinfects and deodorizes surfaces in high traffic areas including commercial kitchens, restrooms and other business facilities.
- This spray cleaner eliminates messes and germs; meets EPA criteria for use against SARS-CoV-2, the virus that causes COVID-19.



| SKU | Capacity Vol. | Packing Type |
|---------------|---------------|----------------|
| 863-35417 | 32 oz | Trigger Bottle |
| 863-CLOX35420 | 1 gal | Bottle |

Concentrated Germicidal Bleach

Features:

- Easier to handle bottle with a concentration level of 8.25%.
- Clean, disinfect and deodorize a variety of surfaces.
- EPA-registered to kill 39 organisms, including multiple strains of MRSA, Norovirus and 3 strains of influenza.
- Kills Clostridium difficile spores in 5 minutes on hard, nonporous surfaces.
- Suitable for food-contact surfaces, kills salmonella, E. coli and listeria.



| SKU | Capacity Vol. |
|---------------|---------------|
| 863-CLOX30966 | 121 oz |



Disinfectant Wipes

Features:

- One-step cleaning and disinfecting.
- Bleach-free formula kills 99.9% of bacteria, including staph and salmonella.
- Ideal for day care centers, offices, schools and restaurants.



| SKU | Odor/Scent | Quantity |
|---------------|-------------------|------------------------|
| 863-15949 | Fresh Scent | 75 Wipes per Container |
| 863-CLOXWIPES | Fresh Scent | 35 Wipes per Container |
| 863-CLOX01594 | Lemon Fresh Scent | 35 Wipes per Container |



MEDAPHENE® Plus Disinfecting Wipes

Features:

- An effective germ-killing disinfectant combined with a strong durable wipe.
- Kills SARS-CoV-2 virus, the cause of COVID-19.
- Included in CBC Group 1 - Products that Disinfect Against SARS-CoV-2.
- The textured wipe works quickly not only to loosen, but also absorb contaminants to leave surfaces clean and disinfected.
- One-step disinfectant/sanitizer.



| SKU | Capacity Vol. | Quantity |
|-----------|---------------|------------------------|
| 253-96365 | 1 lb 5 oz | 73 Wipes per Container |

Stainless Steel Cleaner Towels

Features:

- Stainless steel cleaner and polish in convenient premoistened towels.
- Clean, polish, brighten and protect in one step without dripping or overspraying.
- Prevent water marks and corrosion while preserving the high luster of stainless steel.
- For use on stainless, steel, chrome and aluminum.



| SKU | W x L per sheet | Quantity |
|-----------|-------------------|-------------------------|
| 253-91930 | 9.75 in x 10.5 in | 30 Sheets per Container |

SCRUBS[®] HAND CLEANER TOWELS

IN-A-BUCKET

THE ORIGINAL WATERLESS CLEANER TOWEL™



**MORE
SCRUBBING
POWER**

**SMOOTH
FOR TOUCH UPS**

**DUAL
TEXTURE**

TOWELS

**TEXTURED
FOR HEAVY-DUTY
SCRUBBING**

SCRUBS IN-A-BUCKET® HAND CLEANER TOWELS DO MORE THAN AN INCREDIBLE JOB OF CLEANING - THEY SAVE YOU MONEY!

They contribute to the bottom line because the vast majority of cleaning costs (more than 90%) are in labor! SCRUBS® towels allow workers to clean their hands ANYWHERE, ANYPLACE, ANYTIME!®, reducing the number of trips to hand-washing stations. The time saved can be used for more productive activities for your business.

AVAILABLE PRODUCT

| ORS Item # | MFG # | Net Contents | Packs/Case | Wipe Size |
|------------|-------|--------------|------------|------------|
| 253-42201 | 42201 | 1 Towel | 100 | 8 x 12 in |
| 253-42230 | 42230 | 30 Towel | 6 | 10 x 12 in |
| 253-42272 | 42272 | 72 Towel | 6 | 10 x 12 in |

REMOVES



ADHESIVES



ASPHALT



CAULKS



DIRT



EPOXIES



GREASE



"ICKY-PIC" CABLE GEL



INKS & DYES



LUBRICANTS



OILS



PAINTS



TAR



Formula 409® Cleaner Degreasers/Disinfectants

Features:

- Improved degreasing formula.
- Cleans and degreases virtually any hard, nonporous surface.
- No rinsing required.
- Advanced anti-grease agents quickly penetrate tough soils and grease.



| SKU | Capacity Vol. | Packing Type |
|---------------|---------------|---------------|
| 863-CLOX35306 | 32 oz | Spray Bottle |
| 863-35300 | 128 oz | Refill Bottle |



Cleaners with Bleach

Features:

- A unique two-in-one all purpose cleaner that combines the cleaning power of heavy-duty detergents with the stain-removal power of bleach.
- Contains patented cleaning technologies and no abrasives to clean the full range of tough kitchen and restroom soils like tracked-in dirt and scuffmarks.
- Task areas include customer and employee restroom surfaces, kitchens, the inside and outside of plastic trash containers, and greasy equipment containers.



| SKU | Capacity Vol. |
|-----------|---------------|
| 608-02287 | 32 oz |

Disinfecting Cleaners with Bleach

Features:

- A powerful cleaner that cuts through tough soap scum to leave surfaces clean and sanitized.
- A unique two-in-one all purpose cleaner formula combines the cleaning power of heavy-duty detergents with the stain-removal power of bleach spray.
- Contains no abrasives and uses remarkable cleaning technologies on the full range of tough kitchen and restroom soils.
- A hospital disinfectant (when used per label instructions), it kills important pathogens, such as C-diff, hepatitis B, influenza A, and many more.



| SKU | Capacity Vol. |
|-----------|---------------|
| 608-30314 | 32 oz |



Multi-Surface Disinfectants Degreasers

Features:

- Removes 100% soap scum and grease.
- Cleans, disinfects, degreases and deodorizes.
- Leaves a pleasant scent.
- Kills 99.9% of viruses and bacteria when used as directed on hard non-porous surfaces.
- Multi-purpose daily cleaner.



| SKU | Capacity Vol. |
|------------|---------------|
| 889-311836 | 32 oz |



Lysol® Disinfectant All-Purpose Cleaners

Features:

- Kills germs, cuts grease and deodorizes.
- For use on hard surfaces such as walls, garbage cans, floors and washable wallpaper.
- Ideal for washrooms and kitchens.



| SKU | Capacity Vol. |
|-------------|---------------|
| 863-CB75352 | 32 oz |



24 Hour Sanitizing Sprays

Features:

- 3-in-1 cleaner sanitizes for 24 hours* disinfects and eliminates odors.
- Can be used on a variety of hard, non-food-contact surfaces, such as doorknobs, light switches, and stair railings.
- Can also be used on soft surfaces, such as couches, backpacks, and coats.
- *When used as directed, kills 99.9% of germs and bacteria for 24 hours, and keeps surfaces sanitized against bacteria for up to 24 hours on hard non-porous, non-food contact surfaces.



| SKU | Capacity Vol. |
|-----------|---------------|
| 608-30130 | 15 oz |



Cross-Check™ Tamper Proof Torque Mark

#1 TOP SELLER

FLUORESCENT
UNDER BLACK/UV LIGHT ONLY

VISUALLY
DETECTS LOOSE NUTS AND BOLTS

PROVIDES
WARRANTY PROTECTION

FULLY CURES
IN 24 HOURS

BOEING SPECIFICATION
BMS8-45 TYPE II



DYKEM® Cross-Check™ provides a convenient visual method for identification of vibratory loosening or tampering in nuts, bolts, fasteners, and assemblies. Provides warranty protection against tampering. Marks will be easily broken if parts are tampered with or become loose. Highly visible under ambient light. Excellent adhesion to metal and other substrates.

Dry to touch/handle in 30-40 minutes. 80% curing occurs between 48-72 hours. Completion of curing takes place between 7-10 days Exposing to elevated temp - OR blowing hot air can speed up the drying/curing process.

ADDITIONAL FEATURES

- It's like a wax seal for critical holds and fastening
- Safe for most surfaces
- Highly visible
- Excellent adhesion
- Dries to the touch: 1-2 hours
- GHS compliant labeling
- Two year shelf life



AVAILABLE PRODUCT

| ORS Item # | MFG # | Color | Container | Case Pack | Case Wt. |
|------------|-------|---------|-----------|-----------|----------|
| 253-83314 | 83314 | Orange* | 1 oz Tube | 24 | 2 lbs. |
| 253-83315 | 83315 | Green* | 1 oz Tube | 24 | 2 lbs. |
| 253-83316 | 83316 | Red* | 1 oz Tube | 24 | 2 lbs. |
| 253-83317 | 83317 | Yellow* | 1 oz Tube | 24 | 2 lbs. |
| 253-83318 | 83318 | Blue* | 1 oz Tube | 24 | 2 lbs. |
| 253-83319 | 83319 | White | 1 oz Tube | 24 | 2 lbs. |
| 253-83320 | 83320 | Pink | 1 oz Tube | 24 | 2 lbs. |
| 253-83321 | 83321 | Gray | 1 oz Tube | 24 | 2 lbs. |

*Orange, green, red, yellow and blue fluoresce under black/UV light only





Professional Lysol® Brand Disinfectant Toilet Bowl Cleaners

Features:

- Cleans, disinfects and deodorizes toilets and urinals.
- Thick liquid coats the entire bowl to remove and prevent lime scale and rust buildup.
- Kills staph, pseudomonas, salmonella, E coli and HIV-1 (AIDS virus).
- Removes stubborn rust and mineral deposits as it cleans.



| SKU | Capacity Vol. |
|-----------|---------------|
| 863-74278 | 32 oz |

Professional Lysol® Brand III Disinfectant Sprays

Features:

- Hospital disinfectant is highly effective against TB, MRSA, HIV-1 (AIDS virus), poliovirus Type 1, hepatitis A and norovirus.
- Tuberculocidal, virucidal, fungicidal, bactericidal.
- Eliminates odors and prevents the growth of mold and mildew.
- Contains no CFCs.



| SKU | Capacity Vol. |
|-----------|---------------|
| 738-04675 | 19 oz |



PURE BRIGHT® Liquid Bleach

Features:

- Laundry bleach and liquid disinfectant.
- Removes odors, stains, and keeps whites bright.



| SKU | Capacity Vol. |
|------------------|---------------|
| 863-PUREBRIGHTGL | 1 gal |



Multi Surface Bathroom Cleaners

Features:

- Cleaner has no scent, just specially formulated cleansing agents for lasting results.
- Comes in a 25 oz. bottle and is perfect for cleaning all glass surfaces.
- Professional formula lifts dirt and grime and leaves a pleasant fragrance.



| SKU | Capacity Vol. |
|------------|---------------|
| 889-313358 | 25 oz |



Power Cleaners

Features:

- Super-strength formula eliminates grease, petroleum and food soils.
- No-rinse formula leaves no residue.
- Cleans a wide variety of surfaces (do not use on glass, aluminum or water based paint).



| SKU | Capacity Vol. |
|----------------|---------------|
| 863-SPITFIRE32 | 32 oz |



Heavy-Duty Cleaner+ Degreaser+Disinfectant

Features:

- Triple Threat formula delivers professional strength performance.
- Formulated to weaken soils ability to cling to surfaces.
- Lifts and traps soils for easy rinse off.
- Contains no bleach.
- Heavy-duty non-solvent based degreaser.
- VOC compliant in all 50 states.
- No petroleum or chlorinated solvents.
- Kills 99.9% germs in 10 seconds, viruses in 30 seconds, and bacteria in 45 seconds.



| SKU | Capacity Vol. |
|-----------|---------------|
| 253-26810 | 32 oz |

Drain Openers



LIQUID ALIVE® Drain Maintenance

Features:

- LIQUID ALIVE® Enzyme Producing Bacteria digests and liquefies organic waste, grease and food by-products eliminating malodors and reducing suspended soils.
- It is highly resistant to disinfectants, detergents, sanitizers and free chlorine.



| SKU | Capacity Vol. |
|-----------|---------------|
| 253-23301 | 1 gal |

Floor & Carpet Cleaners



Oil-Based Non-Sanded Floor Sweeping Compounds

Features:

- Non-abrasive sweeping compound safe to use on any floor.
- Perfect for collecting dirt and dust on all types of wood, tile, terrazzo, and finished concrete floors without scratching.



| SKU | Capacity Vol. |
|-----------------|---------------|
| 103-FLOOR-SWEEP | 50 lb |



Oil-Based Sanded Floor Sweeping Compounds

Features:

- Popular regular formula features sanded grit with an oil base.
- Effective as an abrasive for loosening grime and dirt on warehouse floors.
- Suitable for unfinished wood or concrete surfaces.
- Ideal for heavy-duty industrial cleaning tasks.



| SKU | Capacity Vol. | Packing Type |
|------------------------|---------------|--------------|
| 103-FLOOR-SWEEP-GRIT | 50 lb | Box |
| 103-FLOOR-SWEEP-DRM300 | 300 lb | Drum |

Wax-Based Floor Sweeping Compound

Features:

- Non-sanded, wax-based formula.
- Conditions as it cleans.
- Suitable for most surfaces, finished or unfinished.
- Keeps floors looking their best.



| SKU | Capacity Vol. | Packing Type |
|------------------------|---------------|--------------|
| 103-FLOOR-SWEEP-WAX50 | 50 lb | Box |
| 103-FLOOR-SWEEP-WAX100 | 100 lb | Drum |
| 103-FLOOR-SWEEP-WAX150 | 150 lb | Drum |



Finished Floor Cleaners

Features:

- Patented formula removes dirt while protecting the finish.
- No-rinse cleaner leaves no dulling residue and minimizes yellowing.
- Low-sudsing formula is suitable for automatic floor scrubbing machines.
- Recommended dilution: manual (1:128), automatic machines (1:512).



| SKU | Capacity Vol. | Packing Type |
|-----------|---------------|--------------|
| 608-02621 | 1 gal | Bottle |

Furniture Polish



Furniture Polish

Features:

- Brings back the beauty.
- Shines, polishes and dusts wood furniture, cabinets, paneling, vinyl and leather in one step.
- Anti-dust™ formula.



| SKU | Capacity Vol. |
|------------|---------------|
| 889-301168 | 14.2 oz |

Glass Cleaners



HydroForce® Glass Cleaners Professional Strength

Features:

- For professional strength, streak-free glass cleaning.
- Biodegradable, ready-to-use.
- Non-abrasive foaming action.
- Non-flammable, non-ozone depleting.
- Streak-free performance.

Chemical Compound: Water



| SKU | Capacity Vol. |
|-----------|---------------|
| 125-14412 | 18 oz |



Glass Cleaners

Features:

- Cleans with Ammonia-D® for a streak-free shine.
- Loosens soil upon contact.
- Won't streak or leave a film.
- Also cleans chrome, stainless steel, Plexiglas® and other hard surfaces.
- Contains no phosphates.

Chemical Compound: Ammonia-D



| SKU | Capacity Vol. | Packing Type |
|------------|---------------|--------------|
| 889-322338 | 32 oz | Spray Bottle |
| 889-696503 | 1 gal | Jug |



Windex® Bag-in-Box Dispensers

Features:

- Time-saving, no-mess, economical, stackable bag-in-box dispenser or ready-to-use glass and multi-surface cleaner for refilling plastic spray bottles.
- Cleans with Ammonia-D® for a streak-free shine.
- Built-in handles and easy-to-pour dispenser spigot.
- Contains no phosphates.

Chemical Compound: Ammonia-D



| SKU | Capacity Vol. |
|------------|---------------|
| 889-696502 | 5 gal |

Windex® Foaming Glass Cleaners

Features:

- Ready-to-use formula has foam boosters for maximum cling, minimum run-off.
- Cleans with Ammonia-D® for a streak-free shine.
- No chlorofluorocarbons (CFCs).

Chemical Compound: Ammonia-D



| SKU | Capacity Vol. |
|------------|---------------|
| 889-333813 | 19.7 oz |

Odor Neutralizers



Water-Soluble Deodorant

Features:

- Concentrated formula is easy to use and effective.
- Doesn't just mask odors, it eliminates them.
- Nontoxic and nonflammable.
- Use for mopping, shampooing, rinsing or in a hand sprayer.



| SKU | Capacity Vol. |
|-------------|---------------|
| 863-BIGD358 | 32 oz |

Urinal & Bowl Products



Toilet Bowl Cleaner with Bleach

Features:

- Cleans, disinfects and deodorizes toilets.
- Gel formula clings to the bowl's surface to provide a deep clean.
- Eliminates stains, bacteria and odors, leaving toilet bowls sanitary and fresh.
- Bottle shape helps get to the tough under-the-rim stains.



| SKU | Capacity Vol. |
|-------------|---------------|
| 863-OC00031 | 24 oz |

FLOOR & CARPET CARE

Mats



TrakMat® Ground Protection Mats

Features:

- High-density polyethylene (HDPE).
- Designed to allow large vehicles to easily traverse lawns, sidewalks, driveways, and more without causing damage.
- Supports loads up to 90 tons, subject to ground conditions.
- Power cylinder tread surface provides impressive grip.
- Hand holes for easy maneuverability.



| SKU | W x L |
|--------------|-----------------|
| 864-TM4496-G | 44.5 in x 96 in |

MOPPING PRODUCTS

Mop & Squeegee Handles



Mop Handles

Features:

- Quick change type.
- Heavily zinc plated steel construction securely fastened to No.
- 1 grade, 18" diameter, 54" handle.
- Standard wing nut construction with channel-type cross bar that detaches from one side to allow quick change of mop head.



Length: 54 in

Used With: 20 to 32 oz Mop Heads

| SKU | Handle Material |
|--------|-----------------|
| 455-91 | Metal; Hardwood |



Invader® Side Gate Wet Mop Handles

Features:

- Invader® side gate handle's thumb wheel clamps the mop firmly in place.
- Should be used with 1" (2.5 cm) headband mops only.



Length: 60 in

Used With: 1 in Headband Mops

| SKU | Handle Material | Material |
|------------------|-----------------|-------------------|
| 640-FGH116000000 | Hardwood | Hardwood; Plastic |

Mop Buckets



Plastic Mop Buckets with Wringer

Features:

- Yellow mop bucket with wringer designed for durability.
- Corrosion resistant.
- No cracks or crevices to collect dirt.
- Wringer is resistant to cleaning chemicals.



Length: 19-3/8 in

Width: 15-5/16 in

| SKU | Capacity Vol. |
|------------|----------------|
| 455-6035-3 | 26 qt to 35 qt |



WaveBrake™ Bucket/Wringer Combination Packs

Features:

- The WaveBrake™ technology reduces splashing, for a safer environment.
- Predominantly plastic, non-marking casters reduces touch-up cleaning.
- Smooth, easy to clean surfaces.

Length: 20-1/10 in

Width: 15-7/10 in

Height: 36-1/2 in



| SKU | Capacity Vol. |
|-----------------|---------------|
| 640-FG758088YEL | 35 qt |

Mop Heads



Brush Mop Head

Features:

- Made of 4 ply highly absorbent, long wearing yarns.
- Mops are sewn 2 times.

Material: 4 Ply Cotton Yarn

Headband Size: 1-1/4 in



| SKU | Mop Size |
|----------|----------|
| 455-4724 | 24 oz |



Swinger Loop® Wet Mop Heads

Features:

- Compact, looped-end blended mop for general purpose mopping with greater floor coverage.
- Balanced blend of cotton and synthetic yarn offers absorbency and strength.
- Fully launderable for long product life, up to 50 launderings.
- Mop handle sold separately.

Material: Cotton; Synthetic

Headband Size: 5 in



| SKU | Mop Size |
|------------------|----------|
| 640-FGC15306WH00 | Large |



Value Pro Cut-End Cotton Wet Mop Heads

Features:

- Best for general purpose cleaning.
- Hand wash only.

Material: Cotton

Headband Size: 1 in



| SKU | Mop Size |
|------------------|----------|
| 640-FGV11800WH00 | 24 oz |

Squeegees



Neoprene Squeegee

Features:

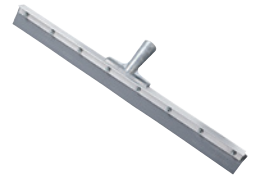
- Non-Sparking.
- Straight Squeegee with Tapered Handle Socket.

Blade Material: Rubber

Frame Material: Aluminum

Includes: Blade Only

Wt.: 2.17 lb



| SKU | Blade Length |
|--------------|--------------|
| 455-4124-TPN | 24 in |

Non-Sparking Floor and Driveway Squeegees

Features:

- Frame is made of 1 inch angle aluminum to which a 2 inches wide x 1/4 inch thick strip of high-grade flexible black squeegee rubber or neoprene is attached with cadmium plated screws.
- Available with two different types of handle assemblies and curved or straight frames.
- Numbers followed by TP or TPN are equipped with a tapered handle socket, handles sold separately.
- Steel bracketed handle is included in the 41 Line, 41N Line, 46 Line, and 46N Line squeegees.

Blade Material: Black Rubber

Handle Material: Wood

Handle Finish: Lacquered

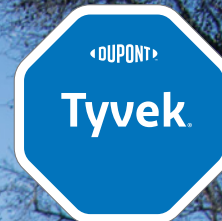
Frame Material: Aluminum

Includes: Steel Bracketed Handle



| SKU | Blade Length | Handle Length |
|----------|--------------|---------------|
| 455-4636 | 36 in | 60 in |

An ideal balance of protection, durability and comfort



DuPont™ Tyvek® 400 garments are composed of a comfortable and durable nonwoven material that offers an inherent barrier against particles down to 1.0 micron in size, aerosols and light liquid splash. Protection is built into the fabric itself; there are no films or laminates to abrade or wear away. The breathable material will help keep workers comfortable without compromising safety.



DuPont Personal Protection



Contact us today for more information.

© 2024 DuPont. All rights reserved. DuPont™, the DuPont Oval Logo, and all trademarks and service marks denoted with ™, SM or ® are owned by affiliates of DuPont de Nemours, Inc. unless otherwise noted.



Floor Squeegees

Features:

- Heavy-duty construction, cast iron handle socket.
- Black rubber blade for rough, heavy use.

Blade Material: Black Rubber

Frame Material: Metal

Includes: Frame Only (Handle Sold Separately)



| SKU | Blade Length |
|-----------|--------------|
| 804-45507 | 24 in |

PAILS & TUBS



Unlined Open Head Steel Pails

Features:

- Thick-gauge, open head steel pail is leak proof and durable.
- Interior rust inhibitor.
- Sturdy, comfort-grip handle for easy lifting.

Material: Steel

Dia.: 13.6 in



| SKU | Capacity Vol. | Height |
|----------|---------------|--------|
| 302-1252 | 5 gal | 28 in |



Hot-Dipped Galvanized Pails

Features:

- Durable long lasting containers for liquids.
- Will not crack or leak.

Material: Steel



| SKU | Capacity Vol. | Height | Width |
|----------|---------------|----------|-----------------------------------|
| 455-8QT | 8 qt | 8-1/2 in | 7-3/4 in Bottom; 9-7/8 in Top |
| 455-10QT | 10 qt | 9 in | 8-1/2 in Bottom; 10-1/4 in Top |
| 455-12QT | 12 qt | 9-1/2 in | 8-3/4 in Bottom; 11-1/2 in Top |
| 455-14QT | 14 qt | 9-1/2 in | 9-1/4 in Bottom; 11-1/2 in Top |



Brute® Round Buckets

Features:

- Brute® buckets have molded-in graduations for accurate measuring.
- Corrosive resistant bails with comfortable plastic grip.

Dia.: 10.5 in



| SKU | Capacity Vol. | Height |
|------------------|---------------|---------|
| 640-FG296300GRAY | 10 qt | 10.2 in |

PERSONAL HYGIENE

Hand Cleaner Dispensers & Accessories



ES8 Soap Touch-Free Dispenser

Features:

- Always-ready, touch-free hand soap dispenser with energy-on-the-refill.
- Coin cell battery integrated into the refill.
- Complements decor and the AT-A-GLANCE refill design provides the easiest way to see when refills need to be changed.

Height: 12.13 in

Width: 5.25 in

For Model: PURELL® ES8 1200 mL HEALTHY SOAP Refills



| SKU | Material |
|-------------|----------|
| 315-7734-01 | Plastic |

ES8 Touch-Free Hand Sanitizer Dispenser

Features:

- Always-ready, touch-free hand sanitizer dispenser with energy-on-the-refill.
- Coin cell battery integrated into the refill.
- Complements decor and the AT-A-GLANCE refill design provides the easiest way to see when refills need to be changed.

Height: 12.13 in

Width: 5.25 in

For Model: PURELL® ES8 1200 mL Hand Sanitizer Refills

Capacity Vol.: 1200 mL



| SKU | Material |
|-------------|----------|
| 315-7720-01 | Plastic |

Hand Cleaners



Antibacterial Plum Foam Handwash Refills

Features:

- Antibacterial foam hand soap, specially formulated with skin moisturizers.
- Luxurious lather and plum fragrance.
- SMART-FLEX™ bottle design.
- Patent-pending controlled collapse technology maintains bottle shape longer while emptying.
- SANITARY SEALED™ refill helps prevent contamination.
- Fresh dispensing valve with each refill.
- Removable pump for easier recycling.

For Model: LTX-12™



| SKU | Capacity Vol |
|-------------|--------------|
| 315-1912-02 | 1200 mL |

Cherry Gel Pumice Hand Cleaners

Features:

- Gel-style hand cleaner with pumice scrubbers and a cherry fragrance.
- Pumice scrubbers combined with gel balance cleaning performance and skin feel.
- Clings to hands for easy cleaning, doesn't fall off your hands into the sink.
- Easy to use and spread across hands and arms.
- Meets California VOC requirement for consumer products.
- Effective on dirt, oil, and grease.
- Quickly removes heavy metals, grease, paint, and tar.
- Dye-free.
- Available as ready-to-use or as SANITARY SEALED™ refill with fresh dispensing valve for dispenser.

For Model: PRO™ TDX™



| SKU | Capacity Vol |
|-------------|--------------|
| 315-7290-04 | 2000 mL |



FAST WIPES® Hand Cleaning Towels

Features:

- High strength, disposable hand cleaning towels.
- Removes grease, grime and other soils in one fast, easy step while taking good care of your hands.



| SKU | Quantity |
|-------------|-----------------------|
| 315-6298-04 | 130 Towels per Bucket |
| 315-6299-02 | 225 Towels per Bucket |

Hand Medic® Professional Skin Conditioners

Features:

- Moisturizes and conditions hardworking hands.
- Quickly absorbs, with no greasy after-feel.
- Use before work, after hand washing and at night to help maintain the skin's natural protective barrier.
- Silicone and fragrance-free.



| SKU | Capacity Vol |
|-------------|--------------|
| 315-8150-12 | 5 Oz |

Luxury Foam Handwash

Features:

- Rich, gentle luxury foam handwash, pre-lathered for a convenient and pleasing experience.
- For general, light-duty cleaning.
- Readily biodegradable soap made with 72 percent naturally renewable plant-based ingredients to show you care about people and the planet.
- EcoLogo Certified and USDA Certified Biobased.
- A mild, cranberry-scented self-lathering foam, free of antibacterials.

For Model: GOJO® FMX-20™ Dispenser



| SKU | Capacity Vol |
|-------------|--------------|
| 315-5261-02 | 2000 mL |



MULTI GREEN® Hand Cleaner

Features:

- Gel-style heavy-duty hand cleaner with natural scrubbing particles for removing oil, grease, grime, paint, dyes, tar and asphalt.
- Contains a natural citrus solvent cleaner.
- Ideal for heavy manufacturing, automotive service and repair, construction, utilities and mining.
- USDA BioPreferred®.

For Model: PRO™ TDX™ Dispenser



| SKU | Capacity Vol. |
|-------------|---------------|
| 315-7265-04 | 2,000 mL |
| 315-7565-02 | 5,000 mL |

Natural Orange™ Pumice Hand Cleaners

Features:

- Pumice scrubbing particles get hands clean fast.
- Lotion formula provides powerful yet gentle cleaning performance.



| SKU | Capacity Vol |
|-------------|--------------|
| 315-0955-04 | 1 gal |

NATURAL* ORANGE™ Smooth Hand Cleaners

Features:

- Quick-acting, lotion hand cleaner.
- Contains a natural citrus ingredient.
- Cleans without harsh solvents.
- Effective on dirt and oil.
- Available as ready-to-use or as SANITARY SEALED™ refill with fresh dispensing valve for PRO™ TDX™ dispenser.



| SKU | Capacity Vol |
|-------------|--------------|
| 315-0945-04 | 1 gal |



Premium Foam Antibacterial Handwash

Features:

- Contains vitamin E and aloe.
- Gentle on hands.
- Premium antibacterial soap with 0.3 percent PCMX that kills most common bacteria.

For Model: TFX™ Dispenser



| SKU | Capacity Vol |
|-------------|--------------|
| 315-5362-02 | 1,200 mL |

Scrubbing Wipes

Features:

- Cleans the toughest soils, whenever, wherever – no water needed.
- These extra large, dual textured wipes contain a scrubbing side for removing tough grease, tar and adhesives and a smooth side for quick dirt absorption.
- Contains skin conditioners to help prevent dryness and irritation.



| SKU | Packing Type | W x L Per Sheet | Odor/Scent | Quantity |
|-------------|-----------------|--------------------|------------|---------------------|
| 315-6380-04 | Counter Display | 12.25 in x 10.5 in | Orange | 80 Packs per Box |
| 315-6396-06 | Bucket | 12 in x 10-1/2 in | Citrus | 72 Wipes per Bucket |

SUPRO MAX™ Cherry Hand Cleaners

Features:

- Fast, effective lotion hand cleaner easily removes tough, sticky soils and adhesives.
- Unique blend of cleaners and gentle scrubbers.
- Ideal for plant-wide use, body shops or wherever difficult soils are found.

For Model: PRO™ TDX™ Dispenser



| SKU | Capacity Vol |
|-------------|--------------|
| 315-7282-04 | 2,000 mL |



SUPRO MAX™ Heavy-Duty Hand Cleaners

Features:

- Fast and effective heavy-duty hand cleaner with gentle scrubbers.
- Unique blend of cleaners and skin conditioners help leave skin feeling healthy.
- Non-drying formula, gentle on skin.
- Effective on oil, grease, paint, and adhesives.
- Available as ready-to-use or as SANITARY SEALED™ refill with fresh dispensing valve for PRO™ TDX™ dispenser.



For Model: PRO™ TDX™ Dispenser

| SKU | Capacity Vol |
|-------------|--------------|
| 315-7572-02 | 5,000 mL |



All Purpose Waterless Hand Cleaners

Features:

- Unique blend designed to clean the hands without harsh acids or alkalis.
- Works equally well with or without the use of water.
- Leaves hands looking and feeling clean, conditioned, and without the greasy feeling associated with most hand cleaners.



| SKU | Capacity Vol. |
|----------|---------------|
| 407-105 | 14 oz |
| 407-101P | 4 lb 5 oz |



Multi-Purpose Scrubbing Wipes

Features:

- Dual textured wipe, a textured side and a smooth side.
- Extra large, durable wipes, 10 inch x 12 inch.
- Multi-purpose to use on hands, tools, and surfaces.
- No water needed.
- Contains no harsh chemicals.
- Leaves hands feeling clean and refreshed.

Quantity: 72 Wipes per Container

Used With: Hands; Surfaces; Tools



| SKU | W x L per sheet |
|------------|-----------------|
| 103-360726 | 10 in x 12 in |



Tub-O Towels® Multi Purpose Towels

Features:

- No water necessary.
- Contains lanolin, aloe vera & vitamin E.
- Kills germs.

Capacity Vol.: 45 oz

Capacity Wt.: 2.38 lb

Quantity: 90 Towels per Container



| SKU | W x L Per Sheet |
|----------|-----------------|
| 296-TW90 | 10 in x 12 in |



WypAll® Waterless Hand Wipes

Features:

- Dual textured: smooth side for wiping and abrasive side for scrubbing.
- Tough on grime, easy on skin.
- Won't damage or fade tools, equipment or parts.
- Removes oil, grease, grim and dirt with ease.

Quantity: 75 Wipes per Bucket



| SKU | W x L Per Sheet |
|-----------|-----------------|
| 412-91371 | 12 in x 10 in |



WorkPlace Hand Cleaner Towels

Features:

- Fast acting.
- Disposable.
- Premoistened.
- Deep cleaning, non-scratching abrasives quickly remove embedded grime.
- Leaves hands clean, conditioned and softened.
- Improves workplace productivity by reducing costly clean-up time.

Quantity: 72 Towels per Bucket



| SKU | W x L Per Sheet |
|-----------|-----------------|
| 428-09200 | 12 in x 10 in |



Fast Orange® Pumice Lotion Hand Cleaners

Features:

- Waterless, petroleum solvent-free hand cleaner that contains no harsh chemicals, mineral oils or ammonia that can sting cuts and abrasions.
- Fortified with aloe, lanolin, glycerin, and other skin conditioners.
- Fine pumice formula gently deep cleans the toughest dirt.
- Works great on laundry stains, scuff marks, tile floors, pet odors and many other household cleaning needs.



| SKU | Capacity Vol |
|-----------|--------------|
| 253-25219 | 1 gal |



Healthcare HEALTHY SOAP™ Gentle and Free Foam Refills

Features:

- Dye-free, fragrance-free hypoallergenic hand soap.
- Designed for frequent use in a healthcare environment.
- Enriched with moisturizers and skin conditioners.
- Free of phthalates, parabens, and triclosan.
- Compatible with nitrile, latex, and vinyl gloves.
- Rinses clean for easy gloving.
- AT-A-GLANCE™ refills allows monitoring product level with just one look.
- SANITARY SEALED™ PET refill is easily recycled.



For Model: ES8

| SKU | Capacity Vol |
|-------------|--------------|
| 315-7772-02 | 1,200 mL |



Hand Cleaner Towels

Features:

- Clean, citrus-scented formula loosens and dissolves industrial soils while leaving hands free from dryness and irritation.
- Rough Touch® blue towel locks in soil to prevent it from transferring back onto hands and surfaces.
- Hands are left feeling clean with no sticky residue and no rinsing required.



| SKU | Packing Type | W x L Per Sheet | Quantity |
|-----------|----------------|-----------------|------------------------|
| 253-42201 | Packet | 8 in x 12 in | 1 Wipe per Packet |
| 253-42272 | Wipe Container | 10 in x 12 in | 72 Wipes per Container |



Lava® Hand Cleaners

Features:

- Moisturizes.
- Pumice is used in combination with other cleaning agents.

Capacity Wt.: 5-3/4 oz



| SKU | Packing Type |
|-----------|--------------|
| 780-10185 | Bar |

Lava® Pumice Hand Cleaners

Features:

- Professional-grade heavy-duty hand soap with pumice.
- Effectively removes dirt, grease, oil, ink, tar, paint, caulk and adhesives from hands.
- Contains moisturizers and is mild on skin.

Capacity Wt.: 4 oz



| SKU | Packing Type |
|-----------|--------------|
| 780-10383 | Bar |



TKO Hand Cleaners

Features:

- Fortified with tough-scrubbing pumice to remove ground-in dirt and grease.
- Blue-green with lemon lime fragrance.
- Contains pumice that cuts through dirt, grease, and grime.
- Enriched with lanolin that moisturizes and soothes hands.

For Model: D-4000 Plus Dispenser 600101; White Hand Pump for Square Gallon 666901



| SKU | Capacity Vol. |
|------------|---------------|
| 019-R54824 | 1 gal |

Hand Sanitizers



Advanced Hand Sanitizer Gels

Features:

- Commonly used to clean hands when soap and water are not available.
- Kills 99.99 percent of most common germs that may cause illness.
- Available in a variety of sizes.



| SKU | Capacity Vol. | Packing Type |
|--------------|---------------|-----------------------|
| 315-3659-12* | 12 fl oz | Table Top Pump Bottle |
| 315-5015-04 | 1.5 L | Pump Bottle |

Healthcare Advanced Hand Sanitizer Refills

Features:

- Kills 99.99 percent of most common germs that may cause illness in a healthcare setting.
- Enhanced with a nourishing blend of four skin conditioners.
- Hypoallergenic, dermatologist tested.
- Compatible with nitrile, vinyl, and latex gloves.
- Chlorhexidine Gluconate (CHG) compatible formulation.
- Dye free.
- AT-A-GLANCE™ refill allows monitoring product level with just one look.
- SANITARY SEALED™ PET refill is easily recycled.
- Available in foam or gel formats.



Capacity Vol.: 1200 mL

| SKU | Odor/Scent |
|-------------|------------|
| 315-7763-02 | Citrus |
| 315-7753-02 | Fruity |

Instant Hand Sanitizers

Features:

- Refreshing gel.
- Kills 99.99 percent of most common germs that may cause illness.
- Works in as little as 15 seconds.
- No water or towels needed.
- Specially formulated with moisturizers to leave hands feeling soft and refreshed.
- Alcohol-based.



| SKU | Capacity Vol. |
|-------------|---------------|
| 315-9651-24 | 4 oz |



PROFESSIONAL™

Hands Instant Sanitizing Wipes

Features:

- Convenient, premoistened wipes safely, gently and effectively sanitize hands.
- For use in food prep areas, serving stations, and checkout/cashier stations.
- Kills 99.99% of germs that can cause illness.
- Contains a moisturizer to help prevent dry skin.



| SKU | Quantity |
|------------|--------------------------|
| 863-P43572 | 150 Sheets per Container |

VACUUM PARTS & ACCESSORIES



5-Layer HEPA Filter For Wet/ Dry Vacuums

Features:

- Captures 99.97% of all particles 0.3 micron in size and larger.
- Reduces allergens.
- Fits all Ridgid® 5 gallon (or larger) wet/dry vacs.
- With patented Qwik Lock™ feature, it snaps easily on or off vacuum for easy cleaning.



| SKU |
|-----------|
| 632-97457 |

High-Efficiency Dust Bags

Features:

- Keeps the inside of the vac drum clean.
- Includes two filter collection bags.
- Fits all Ridgid® 12 to 16 gallon wet/dry vacs.



| SKU |
|-----------|
| 632-23743 |



GATORLYTE® RAPID REHYDRATION

Gatorlyte is the ideal choice for active lifestyles. Developed by Gatorade's sports scientists, it delivers rapid rehydration with a specialized blend of five electrolytes, lower sugar than the leading sports drinks, and no artificial sweeteners or flavors.

SCIENTIFICALLY
FORMULATED
FOR RAPID
REHYDRATION



SODIUM 490 MG
POTASSIUM 350 MG
CHLORIDE 1,040 MG
MAGNESIUM 105 MG
CALCIUM 120 MG



LOWER SUGAR

80% lower sugar than leading sports drink, gatorlyte contains 12g total sugars per 20 fl oz serving, the leading sports drink contains 34g total sugars per 20 fl oz serving.

NO ARTIFICIAL
SWEETENERS OR FLAVORS

- 05282 Gatorlyte Powder sticks 20oz Orange 12/ct
- 05284 Gatorlyte Powder sticks 20oz Watermelon 8/6ct
- 05281 Gatorlyte Powder sticks 20oz Cherry Lime 8/ct
- 04790 Gatorlyte 20oz ready to drink Orange 12/ct
- 04791 Gatorlyte 20oz ready to drink Strawberry Kiwi 12/ct
- 05062 Gatorlyte 20oz ready to drink Watermelon 12/ct
- 05286 Gatorlyte Zero 20oz ready to drink Lemon Lime 12/ct
- 05285 Gatorlyte Zero 20oz ready to drink Strawberry Kiwi 12/ct





Wet/Dry Vacuum Filters

Features:

- One-layer wet/dry filter for everyday dirt.
- Qwik Lock™ Fastening system.
- Washable and reusable.
- Fits all Ridgid® brand vacs 5 gallons and larger.



| SKU |
|-----------|
| 632-72947 |

VACUUMS



Pneumatic Gun Vac® Vacuums

Features:

- Rugged, all metal construction.
- Generous size hanging eyelet.
- Contoured comfort grip with trigger lock.
- 1-1/4 inch vacuum outlet.
- High-filtration collection bag with zipper.
- Dual 1/4 inch FNPT compressed air inlets.



Includes: (1) Gun Vac® Pneumatic Vacuum; (1) High-Filtration Reusable Collection Bag 1500A02; (1) 9 in Plastic Crevice Tool

| SKU | Capacity Vol. |
|----------|-----------------------------------|
| 335-1500 | Approximately 115 in ³ |



NXT Wet/Dry Vacuums

Features:

- Powerful suction, large capacity, and rugged construction.
- Motor delivers the high performance necessary to handle a variety chores.
- Easy to carry.

Tank Material: Polypropylene



| SKU | Capacity Vol. | Air Consumption | Amps | Power Cap. | Cord Length |
|-----------|---------------|--------------------------|------|----------------------|-------------|
| 632-62698 | 6 gal | 70 CFM | 8.3 | 4.25 Peak HP; 996 W | 10 ft |
| 632-62703 | 12 gal | 130 CFM | 9 | 5.0 Peak HP; 1,200 W | 15 ft |
| 632-62723 | 16 gal | 139 ft ³ /min | 12 A | 6.5 Peak HP; 1,440 W | 20 ft |



Stainless Steel Wet/Dry Vac with Cart Model 1610RV

Features:

- Top of the line wet/dry vacuum uses 6.5 peak horsepower to provide optimum power.
- Durable, long-lasting motor.
- Sturdy cart, push handle & large rear wheels act together to allow the vac to travel easily up/down stairs and over rough terrain and thresholds.
- Accessory storage bag keeps accessories organized and close by for easy access.
- Large carry handle with convenient cord wrap provides an area for the storage of the 20' power cord.



Amps: 12 A

Power Cap.: 6.5 hp

Tank Material: Stainless Steel

Cord Length: 20 ft

Includes: (2) Wands; Utility Nozzle; Crevice Tool; Car Nozzle; Wet Nozzle
Wt.: 40 lb

| SKU | Capacity Vol. | Air Consumption |
|-----------|---------------|-----------------|
| 632-50353 | 16 gal | 187 CFM |



Stainless Steel Wet/Dry Vacuums

Features:

- Features a durable, easy to clean, stainless steel tank.
- Works great for picking up wet or dry messes in your garage, workshop, or basement.
- Attach the hose to the rear blower port to blow dirt out of those hard to reach places or grass clippings from your sidewalk.



Amps: 9.9 A

Power Cap.: 4.5 Peak hp

Tank Material: Stainless Steel

Cord Length: 6 ft

Includes: (1) 7-ft by 1.25-in dia Lock-On® Hose with Curved End; (3) 1.25-in dia Extension Wands; (1) 10-in Wet/Dry Floor Nozzle; (1) Crevice Tool; (1) Gulper Nozzle; (1) Cartridge Filter; (1) Foam Sleeve; (1) 5-gal to 8-gal Disposable Filter Bag; (1) Tool Holder

| SKU | Capacity Vol. | Air Consumption |
|-------------|---------------|-------------------------|
| 677-5989305 | 5 gal | 70 ft ³ /min |

WASTE RECEPTACLES

Cigarette Disposal



Smokers Cease-Fire® Cigarette Butt Receptacles

Features:

- Innovative self-extinguishing design safely collects unsightly cigarette butts and reduces the risk of fire.
- Made of flame-retardant, sturdy polyethylene.
- Won't rust, dent, or crack.
- Unique rain bonnet opening.
- Simply lift off lid to empty.
- Tie-down notches offer security and greater stability under severe weather conditions.



Capacity Vol.: 16 qt.

Diameter: 16-1/2 in

Height: 38-1/2 in

Material: Polyethylene

Resistance: Flame Retardant; Weather; Corrosive Process; Humidity

| SKU | Color |
|------------|-------------|
| 400-26800 | Pewter Gray |
| 400-26800D | Deco Black |
| 400-26800T | Terra Cotta |

Dollies



Brute® Dollies

Features:

- Swivel casters afford easy mobility through the workplace.
- Easy twist-on, twist-off action.
- Non-marking caster construction.



Weight Cap.: 250 lb

| SKU | Size |
|-----------------|----------------------|
| 640-FG264000BLA | 18.2 in dia x 6.6 in |

Trash Can Liners



ForceFlex Tall Kitchen Drawstring Trash Bags

Features:

- Tall kitchen drawstring trash bags trap, lock and neutralize odors to keep your rooms smelling fresh.
- Dual-layer protection designed to give extra flex as it expands around sharp edges and heavy loads while resisting punctures, rips and tears.



Height: 24.88 in

Thickness: 0.72 mil

Grade: Super Heavy-Duty

Quantity: 100 Bags per Box

| SKU | Capacity Vol. | Width |
|--------------|---------------|----------|
| 863-CL070427 | 13 gal | 23.75 in |



ECO Strong™ Can Liners

Features:

- These liners are formulated from our own recycled virgin resin and high quality postconsumer resin.
- These are available in a number of assorted sizes and gauges.
- Eco Strong™ liners are manufactured with up to 70% recycled content.



Quantity: 100 Liners per Roll

| SKU | Capacity Vol. | Height | Thickness |
|----------------|---------------|--------|-----------|
| 879-EC434712K | 56 gal | 47 in | 1.2 mil |
| 879-EC385812K | 60 gal | 58 in | 1.2 mil |
| 879-EC385815K | 60 gal | 58 in | 1.5 mil |
| 879-EC385820K | - 60 gal | 58 in | 2.0 mil |
| 879-RPS10003XK | - 60 gal | 63 in | 2.7 mil |

HD Mini Roll Trash Liners

Features:

- High Density Mini-Rolls provide answers to questions of environmental responsibility as well as cost efficiency.
- The unique blend of first grade high molecular weight High Density Polyethylene and LLDPE resins is puncture resistant, possesses impressive film strength and performs under temperature extremes of -40° F to 212° F.



Height: 48 in

Thickness: 22 μ

Quantity: 150 Liners per Roll

| SKU | Capacity Vol. | Width |
|---------------|---------------|-------|
| 879-MR43484MK | 56 gal | 43 in |



Vu Thru Trash Liners

Features:

- Pitt Plastics highest quality clear can liner, Vu-Thru liners are produced with only the highest quality virgin resins.
- Clear can liners are becoming increasingly popular in areas where recycling is prevalent, because they allow quick and easy visual confirmation of visibility to prevent unwanted disposal and help prevent pilferage of items that could be concealed in opaque liners.



Height: 65 in

Thickness: 2.5 mil

Quantity: 50 Liners per Roll

| SKU | Capacity Vol. | Width |
|----------------|---------------|-------|
| 879-RXS10002XC | 60 gal | 38 in |



FLEX-O-BAG® Contractor Bags

Features:

- Full 3 mil thickness.
- Handy dispenser carton is stackable.
- No side seams to split.

Height: 48 in

Thickness: 3 mil

Grade: Heavy-Duty

Quantity: 20 Bags per Box



| SKU | Capacity Vol. | Width |
|---------------|---------------|-------|
| 795-HB42-20-R | 42 gal | 33 in |

FLEX-O-BAG® Trash Can Liners and Contractor Bags

Features:

- Convenient large rolls of heavy industrial weight plastic bags in handy dispenser boxes and extra-long twist ties.
- Also included are Hold-Tite rubber bands to secure bag to can top; excluding Heavyweight Contractor Bags (HB42-20).
- No side seams to split and no gussets to weaken the bottom.
- Options available for Extra Heavy-Duty Contractor Bags, Heavyweight Contractor Bags, High Count Industrial Grade Trash Can Liners, and Tall Kitchen Bags.



| SKU | Capacity Vol. | Width | Height | Thickness | Quantity |
|--------------|---------------|-------|--------|-----------|------------------|
| 795-FB13-150 | 13 gal | 24 in | 30 in | 1.25 mil | 150 Bags per Box |
| 795-HB42-20 | 42 gal | 33 in | 48 in | 3 mil | 20 Bags per Box |
| 795-FB55-50 | 55 gal | 36 in | 56 in | 1.75 mil | 50 Bags per Box |
| 795-HB55-30 | 55 gal | 36 in | 56 in | 3 mil | 30 Bags per Box |

Trash Can Liners with Recycled Plastic

Features:

- Recycled plastic contractor bags for rugged cleanup and heavy trash.
- Top-quality bags have no side seams to split or gussets to weaken the bottom.
- Stackable dispenser cartons.
- Extra heavy-duty contractor bags for rugged cleanup and heavy trash.
- Top-quality bags have no side seams to split or gussets to weaken the bottom.
- Stackable dispenser cartons.



Height: 60 in

Thickness: 3 mil

Grade: Heavy

Quantity: 30 Liners per Box

| SKU | Capacity Vol. | Width |
|---------------|---------------|-------|
| 795-HB55-30-R | 55 gal | 36 in |

Trash Cans



Pre-Galvanized Trash Can With Lid

Features:

- Resists corrosion and stands up to heavy use.
- Sturdy handles on sides and lid allow a firm grip.
- Rolled rims on can and lid add strength.

Height: 22-5/8 in

Material: Galvanized Steel

Width: 17 in



| SKU | Capacity Vol. |
|--------------------|---------------|
| 455-20GALLON-W/LID | 20 gal |



BRUTE® Round Containers without Lid

Features:

- Durable, heavy-duty containers for a variety of uses.
- Proprietary design plus a UV inhibitor ensures long life.
- Venting channels reduce the force required to remove a full can liner.
- Integrated cinches secure liners for efficient knot-free changes.
- Seamless construction makes cleaning the container easier.
- Contoured base handles improve grip, reduce strain, and improve efficiency.
- Reinforced rims add strength and durability while transporting.
- Built-in, rounded handles allow easy, non-slip lifting and anti-jam nesting.
- Reinforced base built to withstand rough surfaces for extended life.
- Gray, white and yellow are USDA Meat and Poultry Equipment Group Listed and assist in complying with HACCP guidelines.
- Certified to NSF Standard #2 (gray, white and yellow) and Standard #21 (all colors).
- Available in a variety of sizes
- Lids sold separately.

Material: Heavy-Duty Plastic



| SKU | Capacity Vol. | Height | Dia. |
|------------------|---------------|-----------|-----------|
| 640-FG263200GRAY | 32 gal | 27-1/4 in | 22 in |
| 640-FG264360GRAY | 44 gal | 31-1/2 in | 24 in |
| 640-FG265500GRAY | 55 gal | 33 in | 26-1/2 in |

Trash Pickers & Grabbers



NiftyNabber® Pro NN Series

Features:

- All-purpose grabber for universal trash removal.
- No bending, no backaches — even out-of-reach items can be easily removed.
- Powerful claws grip small and oddly shaped objects.

Material: Nylon; Rubber; Steel



| SKU | Handle Type | Jaw Opening |
|-------------|-------------|-------------|
| 863-OCNN900 | Lever | 15 cm |

WIPING PRODUCTS

Sponges & Hand Pads



Magic Erasers Extra Durable

Features:

- A powerful all-purpose cleaner that removes scuff marks, dirt and grime from a variety of surfaces around your business.
- Surface cleaner uses innovative, textured, water-activated cleaning pads as micro-scrubbers to reach into surface grooves and lift away the toughest soils with water alone.
- It is 50% stronger than Mr.Clean Magic Eraser Original for heavy-duty cleaning, holds up to tough messes better, and lasts longer between replacements.

Thickness: 0.7 in



| SKU | Width |
|-----------|--------|
| 608-16449 | 4.6 in |

Tissues

BASELINE

Jumbo Roll Bath Tissues

Features:

- Made from 100% recycled fiber.
- Meets or exceeds EPA guidelines for post consumer content.
- Green Seal Certified (3109, JRT002, PQ800).

Ply: 2

Length x Width: 1000 ft Roll x 3.15 in



| SKU | Material |
|----------|---------------------|
| 886-3109 | 100% Recycled Fiber |

Standard Bath Tissues

Features:

- Made from 100% recycled fiber.
- Meets or exceeds EPA guidelines for post consumer content.
- Green Seal Certified (B55080).

Ply: 2

Length x Width: 3.2 in x 4.1 in



| SKU | Material |
|------------|---------------------|
| 886-B50096 | 100% Recycled Fiber |



Essentials Soft™ Bathroom Tissues

Features:

- Soft, 2-ply toilet paper.
- Long-lasting rolls.
- Clog-safe and septic-safe.
- Roto-Rooter approved.
- Excellent for everyday use.

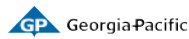
Ply: 2

Length x Width: 3.92 in x 4 in

Roll Length: 244 Sheets Per Roll



| SKU |
|-----------|
| 608-03154 |



Pacific Blue Select™ Jumbo Jr 2-Ply Toilet Tissues

Features:

- 2-ply bathroom tissue in a long-lasting 9 in jumbo junior roll format.
- Safe for all standard sewer and septic systems.
- Jumbo tissue is replaced less often, reducing maintenance time and risk of run out during peak times.
- Reliable performing jumbo bath tissue is an affordable choice for high-traffic areas.

Ply: 2

Material: Paper

Length x Width: 1000 ft x 3.5 in

Roll Length: 1000 ft



| SKU | Material |
|-----------|----------|
| 863-13728 | Paper |



Kleenex® Cottonelle® Bathroom Tissue

Features:

- Individually wrapped in attractive packaging so rolls stay clean and hygienic.
- Small cases for easy storage and handling.
- This tissue offers the soft, plush quality that you expect at home.

Ply: 2

Length x Width: 4.09 in x 4 in

Roll Length: 4 in



| SKU |
|-----------|
| 412-17713 |



Scott® Standard Roll Bathroom Tissue

Features:

- Embossed bathroom tissue.
- Strong, soft and absorbent.
- The ideal balance of strength, absorbency and economy.

Ply: 2

Length x Width: 4.1 in x 4 in

Roll Length: 170.8 ft



| SKU |
|-----------|
| 412-04460 |

Towels & Wipers

BASELINE Centerpull Towels

Features:

- Made from 100% recycled fiber.
- Meets or exceeds EPA guidelines for post consumer content.



| SKU | Roll Length |
|-----------|-------------|
| 886-BCPT6 | 500 ft |

Hardwound Roll Towels

Features:

- Available in white or brown.
- Made from 100% recycled fiber.
- Meets or exceeds EPA guidelines for post consumer content.
- Green Seal Certified (B80B, BHWRT8B, B612B).



| SKU | Roll Length |
|----------|-------------|
| 886-B80B | 800 ft |

Multifold Towels

Features:

- Available in white or brown.
- Made from 100% recycled fiber.
- Meets or exceeds EPA guidelines for post consumer content.
- Green Seal Certified (BMF4B, B925B).



| SKU | Color | W x L per sheet |
|-----------|-------|------------------|
| 886-B925B | White | 9.5 in x 9.25 in |
| 886-B925N | Brown | 9.5 in x 9.25 in |

Brawny Industrial™ Light-Duty Wipers

Features:

- Paper wipers provide strength and fast absorption.
- Ideal for cleaning glass, but tough enough for general maintenance work.

Used With: Mfr. No. 50313



| SKU | Quantity |
|-----------|--------------------|
| 863-29221 | 148 Sheets per Box |

Brawny Industrial™ Medium-Duty Wipers

Features:

- Ideal for cleaning glass, but tough enough for general maintenance work.
- Paper wipers provide strength and fast absorption.

Used With: 50313



| SKU | Quantity |
|------------|--------------------|
| 863-290503 | 166 Sheets per Box |

enMotion® Paper Towel Rolls

Features:

- Touchless towel dispensers help reduce waste much more than standard ones.
- One-at-a-time, touch-free dispensing helps minimize usage and helps reduce the risk of cross contamination.
- Long-lasting roll reduces maintenance costs and the risk of run-out.

Used With: enMotion® Impulse® 10 Towel Dispenser; enMotion® Wall-Mount Automated Towel Dispenser



| SKU | Roll Length |
|-----------|-------------|
| 863-89460 | 800 ft |



Centerpull Towels

Features:

- Soft, strong, and highly absorbent.
- Perforated to dispense one at a time.
- H6002 is made from 100% recycled fiber and Green Seal Certified.

Roll Length: 600 ft

Used With: HDCPT1 Dispenser



| SKU | W x L per sheet |
|-----------|----------------------------|
| 886-H6002 | 7.6 in x 15 in Perforation |

Hardwound Roll Towels

Features:

- Available in white or natural.
- Up to 800 feet long to reduce maintenance demands.
- Made from 100% recycled fiber.
- Green Seal Certified (H1350W, H1800W).

Used With: HDEHF1 and HDMHF1 Dispensers



| SKU | Roll Length |
|------------|-------------|
| 886-H1350N | 350 ft |

Household Roll Towels

Features:

- Strong and absorbent 2-ply embossed toweling.
- Made from 100% recycled fiber.
- Green Seal Certified.



| SKU | W x L per sheet |
|-----------|------------------|
| 886-H4000 | 11.0 in x 9.0 in |



Kimtech Pure* W4 Pre-Saturated Wipers

Features:

- Contains semiconductor grade alcohol.
- Ideal one-step application of alcohol to critical surfaces.
- Recommended for the most critical wiping tasks in ISO Class 4 or higher cleanroom environments.
- Resealable pouch with case liner.



| SKU | Quantity |
|-----------|-------------------|
| 412-06070 | 40 Wipes per Pack |

Kimtech Science™ Kimwipes™ Delicate Task Wipers

Features:

- Offers a unique combination of low-lint tissue softness and excellent absorbency that's perfect for a multitude of delicate tasks.
- Stores in a convenient POP-UP* Box.



| SKU | W x L per sheet | Quantity |
|-----------|-------------------|-------------------|
| 412-34133 | 11.8 in x 11.8 in | 196 Wipes per Box |
| 412-34256 | 14.7 in x 16.6 in | 140 Wipes per Box |
| 412-34721 | 14.7 in x 16.6 in | 90 Wipes per Box |
| 412-34155 | 4.4 in x 8.4 in | 280 Wipes per Box |

Scott® Essential Multi-Fold Paper Towels

Features:

- Designed to reduce waste in your office or business, since they fit into any universal dispenser for trifold or multifold towels.
- Exclusive absorbency pockets that soak up water fast, these multifold paper towels are designed to reduce waste.



Quantity: 250/Pack

Used With: 09006; 09905; 39710

| SKU | W x L per sheet |
|-----------|-----------------|
| 412-01804 | 9.2 in x 9.4 in |



Scott® Essential Recycled Fiber Multi-Fold Paper Towels



Features:

- Made with 100% recycled fiber (RF), so you can feel good about choosing them for your business.
- Fit into any universal dispenser for trifold paper towels or multifold towels (which helps control over use).

Quantity: 4000/Pack

| SKU | W x L per sheet |
|-----------|-----------------|
| 412-01807 | 9.2 in x 9.4 in |



WypAll® L30 Wipers

Features:

- Ideal for general-purpose, light-duty cleanups.
- Removes soils and liquids from face and hands.
- DRC (Double Re-Creped) design provides greater surface softness.
- Reinforced grid weave delivers added strength for wet surface wiping and cleaning.



| SKU | W x L per sheet | Quantity | Packing Type |
|-----------|-------------------|---------------------|--------------|
| 412-05800 | 9.8 in x 16.4 in | 100 Sheets per Box | Pop-Up® Box |
| 412-05816 | 9.8 in x 16.4 in | 120 Sheets per Box | Pop-Up® Box |
| 412-03086 | 10 in x 10.8 in | 120 Sheets per Box | Box |
| 412-05843 | 10.4 in x 11 in | 70 Sheets per Roll | Small Roll |
| 412-05812 | 12 in x 12.5 in | 90 Sheets per Pack | Pack |
| 412-05841 | 12.4 in x 13.3 in | 950 Sheets per Roll | Jumbo Roll |

WypAll® Waterless Cleaning Wipes

Features:

- Wipes let you clean up on the go.
- They come pre-moistened with a natural citrus cleanser and are textured for cleaning everything from hands to surfaces to greasy tools.



Quantity: 50 Wipes per Container

| SKU | W x L per sheet |
|-----------|------------------|
| 412-58310 | 9-1/2 in x 12 in |



WypAll® X70 Cloths

Features:

- Heavy-duty cloths with high-tech HydroKnit® fast-absorbing material.
- Suitable for removing dirt, oil, grime, and solvents in a variety of industrial and manufacturing industries.
- Premium industrial cloths are made of soft pulp fibers, bonded to a polypropylene base sheet for absorbency and tear resistance.



| SKU | W x L per sheet | Quantity | Packing Type | Used With |
|-----------|-------------------|---------------------|--------------|-------------------------|
| 412-41200 | 12.5 in x 12 in | 76 Sheets per Pack | Pack | Dispensers 45888, 09107 |
| 412-41455 | 8.34 in x 16.8 in | 100 Sheets per Box | Box | No Dispenser Required |
| 412-41600 | 13.4 in x 12.4 in | 870 Sheets per Roll | Roll | Dispensers 80596, 80579 |



Hard Roll Paper Towels

Features:

- Absorbency Pockets™ absorb lots of water fast for superior hand drying performance, so guests use fewer paper towels.
- Paper towel rolls combine a soft feel with the premium performance of commercial paper towels.



Roll Length: 425 ft

Used With: 09746; 09765; 09990; 09991

| SKU | Roll Length |
|-----------|-------------|
| 412-01080 | 425 ft |

Premiere Kitchen Paper Towel Rolls

Features:

- Cloth-like towel is powerful enough for scrubbing and wiping up spills, yet gentle enough for drying hands.
- Strong and absorbent, with a soft hand-feel.
- Perforated for easy dispensing.



Quantity: 70 Sheets per Roll

| SKU | W x L per sheet |
|-----------|-----------------|
| 412-13964 | 10.4 in x 11 in |



Pacific Blue Select™ 2-Ply Perforated Paper Towels

Features:

- Hard Working 2-Ply Towels are designed for lasting strength and absorbency.
- Great For Everyday Cleaning and Wiping in restaurants, healthcare, break rooms and kitchen spaces.
- Cost Efficient solution for everyday cleaning and wiping tasks.



Quantity: 85 Sheets per Roll

| SKU | W x L per sheet |
|-----------|-----------------|
| 863-27385 | 11 in x 8.8 in |



C-Fold Paper Towels

Features:

- Designed to reduce waste and provide excellent, economical drying for hands and surfaces.
- This product was made from wood that came from a certified managed forest.



Quantity: 200 Towels per Pack

Used With: 09217; 09905; 09906; 39710

| SKU | W x L per sheet |
|-----------|----------------------|
| 412-01510 | 10.125 in x 13.15 in |

Essential High-Capacity Hard Roll Towels

Features:

- Includes unique Absorbency Pockets™, which soak up water fast and may result in less waste.
- Hygienic option because guests only need to touch the paper towel they use.



Used With: 46253; 46254; 48858; 48860

| SKU | Roll Length |
|-----------|-------------|
| 412-02001 | 950 ft |



Kitchen Roll Towels

Features:

- More sheets on a roll to last longer.
- Smaller case for easier handling and storage.
- Made with Absorbency Pockets™ for a soft and absorbent performance to handle tough spills and clean-up.



Quantity: 128 Sheets per Roll

| SKU | W x L per sheet |
|-----------|-----------------|
| 412-41482 | 8.79 in x 11 in |

Original™ Multi-Purpose Shop Towels

Features:

- Ideal for changing oil, refilling fluids and general maintenance.
- Strong, absorbent towel is great for wiping hands, tools and cleaning up grease, oil, grime and fluids.
- Works well when wet.



| SKU | W x L per sheet | Quantity |
|-----------|-----------------|--------------------|
| 412-75130 | 11 in x 9.4 in | 55 Sheets per Roll |
| 412-75190 | 9 in x 12 in | 200 Sheets per Box |

Rags In A Box™ Heavy Duty Disposable Towels

Features:

- Ideal for painting, wiping up spills, staining and refinishing furniture.
- Soft, absorbent towels that perform like a cloth.
- Built-in handle allows you to take the box on the job while keeping rags clean.



| SKU | W x L per sheet | Quantity |
|-----------|-----------------|--------------------|
| 412-75260 | 10 in x 12 in | 200 Sheets per Box |



Universal 100% Recycled Fiber Hard Roll Towels

Features:

- Reduce maintenance time, run-outs and complaints with long-lasting bulk paper towels (as compared to a folded towel system).
- Compatible with many universal hard roll paper towel dispensers designed to hold 1.5-inch cores.
- Absorbs lots of water fast for superior hand drying performance, so guests use fewer paper towels.
- Designed for efficient general-purpose cleaning and drying.



Used With: 09746; 09765; 09990; 09991

| SKU | Roll Length |
|-----------|-------------|
| 412-04142 | 800 ft |



L40 Towels

Features:

- Disposable cleaning and drying towels, outstanding general-purpose towels.
- Made of bonded cellulose using DRC (double re-creped) technology for strength, softness, and absorbency.
- Specially designed to absorb liquids, lubricants, and oils.
- Gentle enough to dry your hand or face.
- Use in restaurants for wiping counters, in mechanic shops, industrial and commercial factories and more.



| SKU | Color | W x L per sheet | Quantity |
|-----------|-------|-------------------|---------------------|
| 412-05701 | White | 12.5 in x 12 in | 56 Sheets per Pack |
| 412-03046 | White | 10.8 in x 10 in | 90 Sheets per Box |
| 412-05790 | White | 16.4 in x 9.8 in | 100 Sheets per Box |
| 412-05740 | Blue | 16.4 in x 9.8 in | 100 Sheets per Box |
| 412-05007 | White | 13.4 in x 12.4 in | 750 Sheets per Roll |

X50 Cleaning Cloths

Features:

- Combines versatile performance with economical design for light-duty tasks.
- Reinforced for wet and dry strength, smaller sheet size means less waste.



| SKU | W x L per sheet |
|-----------|-------------------|
| 412-35015 | 9.8 in x 12.2 in |
| 412-83550 | 8.34 in x 12.5 in |



X60 Cloth Wipers

Features:

- Absorbs more water and oil than rags for faster cleanup.
- Tough enough for big jobs, soft enough for face and hands if skin is uncompromised.
- Clean and consistent cloth every time.
- Portable, convenient point-of-use options enhance productivity.



| SKU | Color | W x L per sheet | Quantity |
|-----------|-------|-------------------|-----------------------|
| 412-34955 | White | 13.4 in x 12.4 in | 1,100 Sheets per Roll |
| 412-34790 | White | 8.34 in x 16.8 in | 118 Sheets per Box |
| 412-54015 | White | 11.1 in x 16.8 in | 252 Sheets per Box |
| 412-34965 | Blue | 13.4 in x 12.4 in | 1,100 Sheets per Roll |

X80 Heavy-Duty Cloths

Features:

- Replaces shop towels and white cotton rags.
- Doesn't fall apart when tackling the most demanding jobs - even in solvents.
- Absorbs 30% more water significantly faster, and leaves 3X less lint than shop towels.
- Rinse and reuse - reduces waste and cost.
- Clean and consistent cloth every time.
- Portable dispensers allow you to keep product where you work.



| SKU | Color | W x L per sheet | Quantity | Used With |
|-----------|-------|-------------------|---------------------|--------------|
| 412-05930 | Red | 8.34 in x 16.8 in | 80 Sheets per Box | 73900 |
| 412-41048 | White | 8.34 in x 16.8 in | 80 Sheets per Box | 73900 |
| 412-41041 | Blue | 11.1 in x 16.8 in | 160 Sheets per Box | 73900 |
| 412-41055 | Red | 12.2 in x 12.4 in | 475 Sheets per Roll | 80596; 80579 |
| 412-41025 | White | 12.2 in x 12.4 in | 475 Sheets per Roll | 80596; 80579 |
| 412-41043 | Blue | 12.2 in x 12.4 in | 475 Sheets per Roll | 80596; 80579 |



Reclaimed Wiping Rags

Features:

- Economical, absorbent and good for general purpose wiping applications
- Derived from clothing/towels that are sorted and cut into rags.
- Rags are scanned for metal to ensure safety



| SKU | Color | Quantity |
|----------------|----------|---------------------|
| 920-WR5010W-25 | White | 25 lb per Container |
| 920-WR5010W-50 | White | 50 lb per Container |
| 920-WR6010C-1 | Assorted | 10 lb per Container |
| 920-WR6400C-25 | Assorted | 25 lb per Container |
| 920-WR3500C-25 | Assorted | 25 lb per Container |
| 920-WR6010C-50 | Assorted | 50 lb per Container |
| 920-WR6010C-50 | Assorted | 50 lb per Container |



GREAT SERVICE!

We can help you with selections and solutions.





BOSCO
BROS., L.L.C. NORCO, LA