

A construction site at sunset. In the foreground, a large crane stands on the left. Four workers in safety vests and hard hats are silhouetted against the bright orange and yellow sky. They are carrying long wooden beams across a concrete structure. The background shows a vast, open landscape under a cloudy sky.

BOSCO
BROS., L.L.C. NORCO, LA

VOLUME II

**CONSTRUCTION
CATALOG**

Table of Contents

Bonded Abrasives	4	Coolers & Chests		Pipe Wrenches	
Resin Bonded Abrasives		Bending & Flaring Tools	17	HVAC Regulators and Flowmeters	
Coated Abrasives	4	Flaring & Swaging Tool Sets		Cleaning Products	27
Coated Disc Abrasives		Clamps & Vises	17	Floor & Carpet Cleaners	
Coated Flap Disc Abrasives		Clamps & Spreaders		Glass Cleaners	
Non Woven Abrasives	5	Vises		Personal Hygiene	27
Non Woven Pad Abrasives		Files	18	Hand Cleaners	
Wire Brush Abrasives	5	Half Round Files		Vacuums	
End Brushes		Hammers		Waste Receptacles	28
Scratch Brushes		Knives & Multi-Purpose Tools	19	Trash Can Liners	
Wheel Brushes		Knife Blades		Trash Cans	
Adhesive Products	6	Knives		Wiping Products	28
Adhesives & Glues		Lawn & Garden Tools	21	Towels & Wipers	
Sealing Products	6	Shovels & Spades		Crayons	30
Sealants		Sprayers		Markers	30
Threadlockers		Water Hose Parts & Accessories		Pencils	32
Tape Products	8	Water Hoses		Soapstone Holders	32
Electrical Tapes		Pipe Threading Equipment	22	Soapstones	33
Packaging Tapes		Threaders Powered		Carts & Trucks	33
Cleaning Products	8	Threaders Powered Accessories		Hand Trucks	
Cleaners & Degreasers		Pliers & Cutters	23	Tilt Carts	
Leak Detectors & Penetrants	9	Bolt & Chain Cutters		Utility Carts	
Penetrants		Locking Pliers		Flange Pins & Aligners	33
Lubricants & Penetrants	9	Needle Nose Pliers		Squares	34
Anti-Seize Compounds		Specialty Pliers		Levels	34
Fluids		Tongue & Groove Pliers		Covering Products	34
Grease		Tubing Cutters		Tarps	
Grease Guns		Prying Tools	24	Drain Cleaning & Inspection Equipment	34
Multi-Purpose Lubricants		Bars		Drain Cleaners	
Oils		Putty Knives & Scrapers	25	Drain Cleaning & Inspection Equipment Parts & Accessories	
Paint & Paint Supplies	12	Scrapers & Putty Knives		Compressors, Blow Guns, Hoses & Fittings	35
Coatings		Staplers & Riveters	25	Blow Guns	
Paint Brushes		Riveters		Batteries, Cordless Tool	
Paint Rollers & Covers		Staplers		Cordless Tool Batteries & Chargers	36
Paint Supplies & Accessories		Tool Storage	25		
Batteries		Tool Chests			
Paint Trays & Liners		Wrenches	25		
Strapping Products	16	Adjustable Wrenches			
Cable Ties		Combination Wrench Sets			

Table of Contents

Battery Chargers		Faceshields & Visors	
Cutting Tools	37	Hard Hat & Cap Parts & Accessories	
Band Saws		Hard Hats & Caps	
Chop & Cut-Off Saws		Welding Helmet Parts & Accessories	
Circular Saws		Heat Stress Protection	59
Reciprocating Saws		Activity Drinks	
Drilling & Fastening Tools	41	Sweat Bands	
Crimpers		Locking Devices	60
Drills		Lockouts & Hasps	
Impact Drivers		Respiratory Protection	60
Wrenches		Cartridge Respirator Parts & Accessories	
Finishing Tools	43	Cartridge Respirators	
Grinders		Disposable Respirators	
Hammer Drilling & Demolition Tools	45	Safety Storage	62
Combination Hammers		Safety Can Parts & Accessories	
Rotary Hammers		Safety Cans	
Multi-Purpose Power Tools	46	Traffic Safety	63
Combo Kits Cordless		Safety Tapes	
Heating Tools	46	Filler Metals	63
Heat Guns & Torches		Welding Stick Electrodes	
Clothing Protection	47	Gas Cutting & Welding	63
Coveralls & Overalls		Outfits	
Rainwear		Regulators & Flowmeters	
Ear Protection	49	Tips & Nozzles	
Earplug Parts & Accessories		Soldering & Brazing	64
Earplugs		Soldering/Brazing Torches	
Eye Protection	51	Torch & Weed Burners	64
Safety Glasses		Welding & Cutting Accessories	64
Safety Goggles		Anti-Spatter & Chemicals	
Fall Protection	52	Centering Heads	
Lanyards		Cutting & Burning Guides	
Fire, Gas & Water Protection	52	Cylinder & Caps	
Detectors		Rod Holders	
Fire Extinguishers		Spark Lighter & Flints	
First Aid Safety	53	Tip Cleaners	
Eye Wash		Welding Cables & Power Cables	
Insect Repellents & Sunscreens		Welding Hoses	
First Aid Kits			
Head/Face Protection	54		

Honeywell



BONDED ABRASIVES

Resin Bonded Abrasives



FLEXVOLT® Ceramic Metal Cutoff Wheels

Features:

- Tough durable grain with very fine crystal structure to create many more cutting edges in each grain.
- Used for the highest stock removal of metal in bonded and coated abrasives.

Arbor Size: 7/8 in

Grit: 60

Speed: 6600 RPM



SKU	Dia.
115-DWAFV8918	9 in

XP™ Ceramic Type 1 Metal Cutting Wheels

Features:

- Ceramic metal cutting wheels deliver aggressive material removal and a long life Ideal for cutting rod, steel plates, sheet metal, pipe, rebar, and more.

Thickness: 0.04 in

Arbor Size: 7/8 in

Speed: 10100 RPM



SKU	Dia.
115-DWA8953F	6 in



Original Slicer® Cutting Wheels

Features:

- Extremely fast rate of cut.
- Designed with two full layers of high strength fiberglass for safety.
- Consistent performance time after time.
- Burr-free, cool cutting.

Thickness: 0.040 in

Arbor Size: 7/8 in

Grit: 60

Speed: 10200 RPM



SKU	Tool Shape	Dia.
469-655339000	Type 1	6 in



Slicer Plus® High Performance Cutting Wheels

Features:

- Formulated to provide very long life and very aggressive cool cutting.
- Specially engineered with coated aluminum oxide proprietary bond for the toughest applications.
- Designed for delivering thicker sectional cuts in steel, stainless steel, heavy rebar and harder metals.
- Suitable for use on heavy wall pipe and angle iron.

Thickness: 0.045 in

Arbor Size: 7/8 in

Grit: 60

Speed: 10200 RPM



SKU	Tool Shape	Dia.
469-655998000	Type 1	6 in

COATED ABRASIVES

Coated Disc Abrasives



3M™ Cubitron™ II Fibre Disc

Features:

- Sturdy fibre discs employ precision ceramic grain and last up to twice as long.
- Discs run cool and wear evenly.
- Can be run wet or dry.

Abrasive Material: Precision Shaped Ceramic

Grit: 36

Body Material: Fiber



SKU	Dia.	Arbor Diam.	Speed	Mounting
405-051141-27425	4-1/2 in	5/8 in	13300 rpm	TN
405-051141-27400	4-1/2 in	7/8 in	13300 rpm	TN
405-051141-27404	5 in	5/8 in	12000 rpm	TN
405-051141-27401*	5 in	7/8 in	12000 rpm	Center Hole
405-051141-27405	7 in	5/8 in	8600 rpm	TN
405-051141-27402*	7 in	7/8 in	8600 rpm	Center Hole

Coated Flap Disc Abrasives



Tiger® Big Cat® High Density Flap Discs

Features:

- A thicker disc with larger flaps which conforms to curved and irregular surfaces while producing a consistent finish.
- 30 to 40 percent longer life than standard flap discs.
- Ideal for a working angle less than 15 degrees.

Speed: 12000 rpm

Abrasive Material: Zirconia Alumina

Grit: 40

Dia.: 4-1/2 in



SKU	Arbor Diameter
804-50803	7/8 in
804-50808	5/8

NON WOVEN ABRASIVES

Non Woven Pad Abrasives

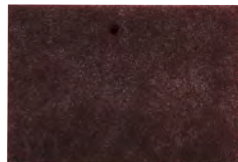


Scotch-Brite™ Hand Pad 7447

Features:

- Hand pads are a great alternative to steel wool, similar performance without the shredding, rusting, or splintering.
- May be used by hand, with a hand pad block, or on an in-line sander.
- Available in a variety of grades, including aluminum oxide, nepheline syenite, or silicon carbide abrasive materials.
- 16"x9" pad

Abrasive Material: Aluminum Oxide



SKU	Roughness Grade
405-048011-04029	Very Fine

WIRE BRUSH ABRASIVES

End Brushes



Crimped Wire Solid End Brushes

Features:

- Light-duty cleaning in corners and hard to reach areas.
- Solid End Construction.
- Very flexible brushing action.

Trim Length: 1 in

Speed: 22,000 RPM

Stem Diam: 1/4 in



SKU	Brush Diam	Wire Size
804-10021	1 in	0.006 in

Knot Wire End Brushes

Features:

- Hollow-end wire brush.
- Rugged knot-type construction provides aggressive, high-impact action for severe applications.
- Ideal for cleaning in recessed areas.

Trim Length: 7/8 in

Speed: 22000 RPM

Stem Diam: 1/4 in



SKU	Brush Diam	Wire Size
804-10027	1-1/8 in	0.014 in
804-10028	1-1/8 in	0.020 in

Scratch Brushes



Hand Scratch Brushes

Features:

- Heavy-duty industrial brushes.
- Wire fill and length is unsurpassed.
- Durable wood handle.

Bristle Material: Carbon Steel

Block Material: Wood

Bristle Rows: 4 X 16



SKU	Handle Type	Handle Material
102-387	Shoe	Wood

Wheel Brushes



Stringer Bead Wheel Brushes

Features:

- Very narrow face design primarily for weld cleaning and to access hard-to-reach areas.

Arbor Diam & Thread: 5/8 in - 11

Bristle Diam: 0.02 in



SKU	Bristle Material	Dia.	No. of Knots	Face Width
102-4S58S	Stainless Steel	4 in	30	1/4 in
102-4S58	Carbon Steel	4 in	30	4 in
102-6S58	Carbon Steel	6 in	48	6 in



Roughneck® Max Stringer Bead Wheels

Features:

- Delivers unmatched weld cleaning performance by maximizing life, efficiency, and consistency.
- Improved feel and comfort during use makes brush operation effortless.
- Stronger, sharper wire delivers consistency and performance you can count on.
- Recommended for cleaning root pass welds, surface prep, and other cleaning applications.

Dia.: 4 in

No. of Knots: 32

Face Width: 3/16 in

Bristle Diam.: 0.020 in

Arbor Diam.: 5/8 in - 11 UNC



SKU	Bristle Material
804-13131	Steel
804-13138	Stainless Steel

Roughneck® Stringer Bead Wheels

Features:

- Narrow face brush is suitable for cleaning root and hot passes.
- Effectively reaches into corners.
- Constructed from premium quality wire.

Arbor Diam: 5/8 in

Face Width: 3/16 in

Arbor Thread: 11 UNC

Bristle Material: Steel

Bristle Diam.: 0.020 in



SKU	Dia.	No. of Knots
804-08756	5 in	38
804-09400	6 in	56
804-09000	7 in	56

ADHESIVE PRODUCTS

Adhesives & Glues



3M™ Super 77™ Multipurpose Spray Adhesive

Features:

- Multipurpose spray adhesive bonds to many surfaces.
- Great for use in home, office and craft projects.
- Versatile, quick drying and transparent.
- Fast, permanent bond provides quick results.
- Aggressive tack provides high initial grab with enough time to position materials properly.
- Industrial sized can provides high coverage.
- Resists dripping or running when used in vertical applications.
- Also available with Low VOC.

Adhesive Tensile Shear: 300 psi

Tensile Strength: 300 psi

Chemical Compound: Synthetic Elastomer

Working Time: 15 sec to 15 min



SKU	Capacity vol.
405-021200-21210	16.75 oz

SEALING PRODUCTS

Sealants



Cross-Check™ Torque Seal® Tamper-Proof Indicator Paste



Features:

- Provides a convenient visual method for identification of vibratory loosening or tampering in nuts, bolts, fasteners, and assemblies.
- Highly visible under ambient light and fluorescent under UV light.
- Tamper-proof torque mark.
- Safe for most surfaces.
- Excellent adhesion.

Temp. Range: -20° F - 400° F

Full Cure Time @ Temp.: 1 to 2 h

Wt.: 0.2 lb

SKU	Capacity Vol.
253-83314	0.05 lb



567™ PST® Thread Sealants, High Temperature

Features:

- Instant thread sealant for taper/taper threads and fittings.
- Great choice for high temperature and high pressure applications.
- Controlled strength for easy disassembly with hand tools.
- Prevents leaks, does not shrink, crack, creep, or shred.
- Provides excellent solvent resistance.
- Eliminates galling on stainless steel.

Temp. Range: -65°F - 480°F

Full Cure Time @ Temp.: 24 Hours @ 72° F



SKU	Capacity Vol.
442-2087067	50 mL

Thread Sealants with PTFE

Features:

- A general purpose sealant with the added lubricity of PTFE for metal pipes.
- Won't shred like tape and allows easy disassembly.

Temp. Range: -65° F - 300° F



SKU	Capacity Vol.
442-1527514	1 pt

Threadlockers

242™ Threadlockers, Medium Strength

Features:

- Medium strength, medium viscosity, methacrylate-based threadlocking adhesive offering general purpose qualities.
- Provides quick fixture times on steel, brass and stainless steel of 5, 15 and 20 min respectively.
- Thixotropic to reduce adhesive migration.

Thread Size: 1/4 in - 3/4 in

Temp. Range: -65° F - 300° F

Curing Method: Anaerobic



SKU	Capacity Vol.
442-135354	10 ml
442-135355	50 mL



243™ Medium-Strength Primerless Threadlockers

Features:

- General purpose threadlocker that provides a medium strength bond.
- Seals and secures metal nuts and bolts to prevent loosening due to shock and vibration.
- Works on all metals, including passive substrates, such as stainless steel, aluminum, and plated surfaces.
- Proven to be tolerant of minor contamination due to industrial oils, such as motor oils, corrosion prevention oils, and cutting fluid.

Thread Size: 1/4 in - 3/4 in

Temp. Range: -65° F - 360° F

Fix Cure Time @ Temp.: 5 min @ 72° F

Curing Method: Anaerobic



SKU	Capacity Vol.
442-1329467	50 mL

271™ High Strength Threadlockers

Features:

- High strength, low viscosity, red, methacrylate-based threadlocking adhesive which fluoresces under UV light to allow monitoring.
- With steel fixture time of 10 minutes, brass 5 minutes and stainless steel 15 minutes.
- Can tolerate slight contaminations of industrial oils.
- Suitable for all metal fasteners.
- Breakaway torque on M10 bolts of 26 Nm.
- Seals threads, allows through-hole tapping.

Thread Size: - Up to 1 in

Temp. Range: -65° F - 300° F

Applications: Threadlocking

Curing Method: Anaerobic



SKU	Capacity Vol.
442-135381	50 ml

TAPE PRODUCTS

Electrical Tapes

Scotch

Scotch® Super 33+ Vinyl Electrical Tape



Features:

- Premium grade tape that provides electrical insulation for all wires and cables rated up to 600 V.
- Designed for above/below grade, indoor/outdoor, low and high voltage applications, and for harnessing cables.
- Offers electrical and mechanical protection with the combination of a pressure sensitive, rubber resin adhesive and elastic, PVC backing.
- Provides a protective jacket for high voltage cable splices.
- Highly resistant to UV rays, abrasion, moisture, alkalis, solvents, and many acids.
- Compatible with solid dielectric cable insulation, synthetic cable insulations, jackets, and splicing compounds.

Material: Rubber-Based Adhesive; Vinyl (PVC) Backing

Thickness: 7 mil

SKU	Length	Width
405-638060-29035	76 ft	3/4 in

Scotch® Vinyl Color Coding Electrical Tape 35



Features:

- Designed for use in phase identification, color coding of motor leads and piping systems and for marking safety areas.
- Flame-retardant and highly resistant to UV rays, abrasion, moisture, alkalis, solvents and many acids.
- Withstands a temperature range of 14 to 221 °F (-10 to 105 °C).
- UL Listed, VDE, CSA Certified and RoHS 2015/863/EU Compliant.

Material: Vinyl

Thickness: 7 mil

SKU	Length	Width
500-108511	66 ft	3/4 in

Packaging Tapes

3M

3M™ VHB™ Tape 4955



Features:

- This tape is a general purpose acrylic adhesive with a firm foam core.
- It can replace rivets, welds and screws.
- Pressure sensitive adhesive bonds on contact to provide immediate handling strength
- Allows the use of thinner, lighter weight and dissimilar materials

Thickness: 80 mil

Material: Firm Foam

SKU	Width	Length
405-021200-67500	3/4 in	36 yd

CLEANING PRODUCTS

Cleaners & Degreasers

CRC

Brake Parts Cleaners

Features:

- Maintaining clean brake and disc parts can improve the life of your car's braking system and keep you safe on the roads.
- Using a brake cleaner for cleaning and degreasing is a great way to maximize the performance and increase the longevity of your entire brake system.
- Formulated to quickly and effectively remove grease, brake dust, brake fluids, oils, and other contaminants from brake parts, lining, pads.
- Options available for chlorinated and non-chlorinated formulas, including non-chlorinated that is less than 45% VOC (05084), ultra low VOC that complies with SCAQMD Rule 1171 (05151), and compliant with VOC regulations for all 50 states (05050).



Chemical Compound: Tetrachloroethylene

SKU	Capacity Vol.
125-05089	20 oz



Industrial Cleaners and Degreasers

Features:

- All-purpose cleaner, degreaser and deodorizer.
- Concentrate dilutes up to 1:30.
- Easily cuts through thick grease, oils, hydraulic fluids and built-up grime on all washable surfaces.
- Non-abrasive, non-corrosive, non-flammable and VOC compliant formula.
- Safe for use in cleaning equipment including floor scrubbers, carpet cleaners and parts washers.
- Orally non-toxic and readily biodegradable formula*.
- EPA Safer Choice product.
- Safer than caustic cleaners and solvents.

Chemical Compound: Ethoxylated Alcohol; Sodium Citrate; Sodium Carbonate; Citric Acid



SKU	Capacity Vol.
676-2710001213012	24 oz
676-2710200613005	1 gal

LEAK DETECTORS & PENETRANTS

Penetrants



PB™ Penetrating Catalysts

Features:

- Great for loosening rusted or frozen screws and bolts.
- Effective rust inhibitor.
- Non-evaporating lubricant.
- Penetrates into hard-to-reach areas.
- Suitable for brake, exhaust and suspension system jobs.
- Available with ProStraw™ with Control Flow Technology™ (16-PB-DS).



SKU	Capacity Vol.
108-16-PB-DS	11 oz

LUBRICANTS & PENETRANTS

Anti-Seize Compounds



Food Grade Anti-Seize

Features:

- Prevents seizure, galling, and friction in stainless steel and other metal parts.
- Used in industrial food industries and general plant maintenance.
- Metal free formulation.

Temp. Range: -29 °C - 400 °C

Chemical Compound: Mineral Oil; Calcium Dihydroxide



SKU	Capacity Wt.
442-1167237	8 oz

LB 8008™ C5-A® Copper Based Anti-Seize Lubricants

Features:

- Exclusive formula suspends copper and graphite in a high quality grease.
- Protects metal parts from rust, corrosion, galling, and seizing.
- Establishes greater clamp load.
- Known as Loctite® C5-A®.

Temp. Range: -20 °F - 1800 °F

Chemical Compound: Petroleum; Mineral Oil; Calcium Dihydroxide; Copper; Graphite; Quartz



SKU	Capacity Wt.
442-160796	1 lb

Silver Grade Anti-Seize Lubricants

Features:

- Heavy duty, temperature resistant, petroleum-based lubricant compound fortified with graphite and metallic flake.
- Inert and will not evaporate or harden in extreme cold or heat.
- For use in assemblies.

NLGI Grade: 1

Temp. Range: -15 °F - 1600 °F

Chemical Compound: Graphite; Mineral Oil



SKU	Capacity Wt.
442-235005	1 lb

Corrosion Inhibitors



Zinc-It® Instant Cold Galvanize Coatings

Features:

- High-performance coating of >93% pure zinc that electrochemically bonds with ferrous metals to form a galvanic cell.
- It actively fights rust and corrosion.
- Use as a touch-up for damaged galvanized coatings.
- Dries quickly.
- Outdoor protection for 1 to 2 years.

Temp. Range: - 130° F Continuous; 150° F Intermittent

Chemical Compound: Acrylic

Recommended Film Thickness: 2 to 3 mil



SKU	Capacity Vol.
125-18412	16 oz



LPS® 3® Premier Rust Inhibitors

Features:

- Protects steel against rust and corrosion for up to 2 years (Indoor storage).
- 9 months outdoor storage).
- Penetrates to displace moisture.
- Resists moisture, sand, dirt, dust and vibration.
- Does not contain chlorinated solvents or silicone.
- Non-staining.
- Safe on most surfaces.

Chemical Compound: Petroleum

Recommended Film Thickness: 3 to 7 mil (Wet); 1 to 3 mil (Dry)

Wt.: 0.69 lb



SKU	Capacity Vol.
428-00316	11 oz

Fluids



Tapmatic® Edge Lube Cutting Lubricants

Features:

- White solid waxy bar.
- Biodegradable.
- Excellent for belt, wheel, or disc grinding, and sawing applications.
- Eliminates heat build-up and belt loading.
- Does not contain any hazardous chemicals.
- Extends grinding wheel life.
- Low toxicity.

Capacity Vol.: 13 oz



SKU
428-43200



Rapid Tap® Heavy Duty Cutting Fluids

Features:

- Greatly extends tool life.
- Super-fine machined finish in operation after operation.
- Excels in tough materials.
- Contains no 1,1,1-trichloroethane or other ozone-depleting chemicals.

Capacity Vol.: 1 pt



SKU
618-RAPTAP-PTNEW



EP-Xtra® Cutting Fluids

Features:

- Outstanding performance for any cutting operation on any metal.
- Absolutely without equal on hard metals and on cuts requiring extreme pressure or long cutting times.
- Metal cutting fluid used to increase speed, extend tool life and improve cut quality

Capacity Vol.: 16 oz



SKU
702-10016E

Grease



JT-6® Hi-Temp Grease

Features:

- Formulated with a high dropping point for use over a wide temperature range.
- Provides excellent protection in severe service and outstanding shock load protection.

NLGI Grade: 2

Temp. Range: -10° F - 325° F

Thickener: Lithium Complex



SKU	Capacity Vol.
122-665005002080	14 oz

JT-6® Multi-Purpose Grease

Features:

- Waterproof and highly water wash resistant.
- Excellent extreme pressure properties.
- Prevents against shock loading.
- Outstanding rust and corrosion prevention.
- Very low oil separation rate.
- Light colored and low staining.
- Good oxidation resistance.

NLGI Grade: 2

Temp. Range: 0° F - 250° F

Thickener: Anhydrous Calcium



SKU	Capacity Vol.
122-665006002080	14 oz

Grease Guns



Lever Type Heavy-Duty Grease Guns

Features:

- Flip-over follower is set for cartridge use.
- Extra-heavy follower spring insures positive priming and uninterrupted pumping action.

Outlet Type: 6 in Extension/Coupler

Designated Fluid: Grease



SKU	Capacity Vol.	Operating Pressure
438-1142	16 oz Bulk; 14.5 oz Cartridge	6000 psi



M18™ Cordless 2-Speed Grease Guns



Features:

- Pre-set grease counter dial.
- Flexible hose offers greater access to difficult to reach fittings.
- Air bleeder valve for quick priming.
- Lock-on/Lock-off trigger delivers added user convenience.

Outlet Type: 48 in Hose/Coupler

Capacity Vol.: 16 oz

Type: 10,000 psi

SKU	Includes
495-2646-22CT	(2) M18™ REDLITHIUM™ Compact Battery; 48 in Flex Hose w/Spring Guard; Soft Carrying Case; High Pressure Grease Coupler; M18™ & M12™ Multi-Voltage Charger; M18™ Cordless 2-Speed Grease Gun; Shoulder Strap
495-2646-20	Tool Only

Multi-Purpose Lubricants



1® Premium Lubricants

Features:

- Provides a dry, thin, lubricating film.
- Resists oil, dust, and dirt build-up.
- Ideal for delicate mechanisms.
- Removes carbon build-up from surfaces.
- Displaces moisture.
- Safe on paint, fabric, and most plastics.
- Used world-wide in aviation.
- VOC compliant in all 50 states.

Chemical Compound: Petroleum



SKU	Capacity Vol.
428-00116	11 oz

Oils



Marvel® Air Tool Oils

Features:

- Specially formulated for use in all piston type and rotary air tools, as well as in-line air lubricators.
- Prevents rust formation while providing positive lubrication for smooth starting and longer tool life.
- Assures maximum performance by dissolving gum and sludge that cut down tool speed and reduce power output.



SKU	Capacity Vol.
465-MM085R1	32 oz



Thread Cutting Oils

Features:

- Cools threads and pipe during operation.
- Speeds metal removal.
- Improves thread quality.
- Reduces threading torque.
- Free of chlorine and other halogens, PCBs and heavy metals (complete MSDS available).



Container Size: 1 gal

Flash Point: 385° F

SKU	Color
632-70830	Black
632-70835	Yellow



Multi-Purpose Lubricants

Features:

- Lubricating ingredients are widely dispersed and hold firmly to all moving parts.
- Dissolves adhesives, allowing easy removal of labels, tape, stickers, and excess bonding material.
- Protects metal surfaces with corrosion-resistant ingredients to shield against moisture and other corrosive elements.
- Loosens rust-to-metal bonds and frees stuck, frozen or rusted metal parts.
- Product displaces moisture quickly and dries out electrical systems to eliminate moisture-induced short circuits.



Temp. Range: -50 °F - 300 °F

SKU	Capacity Vol.	Packing Type	Flash Point
780-490026	8 oz	Aerosol Can	122° F
780-490040	11 oz	Aerosol Can	131 °F
780-490057	12 oz	Aerosol Can	131 °F
780-490088	16 oz	Aerosol Can	122° F
780-490118	1 gal	Canister	122 °F

PAINT & PAINT SUPPLIES

Coatings



Bright Zinc Galvanizing Primers

Features:

- Reduced M.I.G. weld spattering.
- Prevents rust and corrosion.
- Protects welded surfaces.
- Repairs Hot Dip Galvanizing with brighter finish.
- Will not blister or burn away.



SKU	Capacity Vol.
905-RW109B-12	12.75 oz

Paint Brushes



Acid Brushes

Features:

- Lightweight and disposable brush.
- Convenient for cleaning electrical contact points or debris in hard-to-reach spaces.
- Features tin shaft with horsehair bristles.

Trim Length: 3/4 in

Bristle Material: Black Horsehair

Handle Material: Tin Ferrule



SKU	Brush Width	Thickness
102-AB-26	5/16 in	1/4 in



Acme Chip Paint Brushes

Features:

- White China bristle.
- Tin-plated Steel ferrule.
- Unfinished wood handle.

Trim Length: 1-1/2 in



SKU	Brush Width
912-0F51170020	2 in

Amber Fong® Paint Brushes

Features:

- Soft, amber brown bristles provide a smooth finish with all oil-based enamels, varnishes & stains.
- Brown China bristle, chisel trim.
- Brass-plated steel ferrule.
- Pearl-yellow, solid plastic handle.

Trim Length: 2-7/16 in

Bristle Material: China bristle

Handle Material: Plastic



SKU	Brush Width
912-0011230020	2 in



Camel Hair Artists Brushes

Features:

- Artist brushes are used to apply paint or sometimes ink to small areas.
- Thicker ones are used for filling in, and thinner ones are used for touching up details.

Bristle Material: Camel hair

Handle Material: Wood

SKU	Trim Length
912-0F16280010	9 mm
912-0F16280020	11 mm
912-0F16280030	12.5 mm
912-0F16280040	16 mm
912-0F16280050	17.5 mm
912-0F16280060	17.5 mm



Red Sable Artists Brushes

Features:

- Red sable, red handle.
- For oils and acrylics.

Bristle Material: Red Sable

Handle Material: Wood

SKU	Trim Length
912-0F16210030	7 mm
912-0F16270020	10.5 mm

Silver Tip® Paint Brushes

Features:

- White & silver CT™ polyester filaments for excellent leveling & smoothing.
- Very soft formulation, feather stroke.
- Rust-resistant ferrule.
- Hardwood handle.

Bristle Material: Polyester

Handle Material: wood



SKU	Brush Width	Trim Length
912-0052210020	2 in	2-5/8 in
912-0052200020	2 in	2-5/8 in
912-0052210024	2-1/2 in	2-7/8 in
912-0052210030	3 in	2-7/8 in



Soft Tip® Paint Brushes

Features:

- Synthetic blend for all paints, latex- & oil-based.
- Soft brush tips provide a smooth, even finish.
- Brass-plated steel ferrule.
- Pearl-yellow, solid plastic handle.

Bristle Material: Synthetic blend

Handle Material: plastic



SKU	Brush Width	Trim Length
912-0Q31080010	1 in	2-3/16 in
912-0Q31080020	2 in	2-7/16 in

Ultra/Pro Paint Brushes

Features:

- Made with Purple/Black nylon and or sable polyester.
- Stainless steel ferrule.
- Sealed wood handle.

Bristle Material: Nylon/polyester



SKU	Brush Width	Trim Length	Handle Material
912-0041870020	2 in	2-3/8 in	Rubberized
912-0041740020	2 in	2-5/8 in	Wood

Yachtsman® Paint Brushes

Features:

- White China bristle, chisel construction.
- Soft formulation, velvet feel.
- Round, brass-plated steel ferrule.
- Black solid plastic handle.

Trim Length: 2-15/16 in

Bristle Material: China bristle

Handle Material: plastic



SKU	Brush Width
912-0Z11200030	3 in

Paint Rollers & Covers



Adhesive Applicators

Features:

- Extra-short white fabric provides smooth application of all adhesives and epoxies, water-based or solvent-based.
- Use on wallcoverings, fiberglass, paneling, floor tile.
- Polypropylene core resists water, solvents, and cracking.

Nap Length: 1/8 in



SKU	Size	Width
912-00R2450090	9 in	9 in

American Contractor® Roller Covers

Features:

- First choice for value & performance in a production cover, excellent paint pickup & release.
- Made in America quality, use with all paints (flat, eggshell, satin).
- Double-thick polypropylene core resists water, solvents & cracking.

Nap Length: 1/2 in



SKU	Size	Width
912-00R5630090	9 in	9 in

Magikage® Trafficage Roller Frames

Features:

- Ideal for lines, edging & trim work.
- Galvanized shank.
- Sturdy wire cage maintains roller cover shape for smooth application.
- Compatible with standard threaded extension poles.



SKU	Width
912-00R0220040	4 in



Mini-Koter® Frames

Features:

- Plastic threaded grip.
- For both 4 in and 6 in Mini-Koter® rollers.



SKU	Width
912-00R0110040	4 in

Pro/Doo-Z® Jumbo-Koter® Mini Roller Covers

Features:

- All paints, enamels, primers, urethanes and epoxies.
- Highly versatile for most applications.
- Proprietary woven fabric.
- Use with any Jumbo-Koter® frame.

Nap Length: 3/8 in



SKU	Width
912-0RR3020044	4-1/2 in

Shed-Resistant Woven Mini-Koter® Mini Roller Covers

Features:

- Perfect for small areas in tight spaces.
- Shed-resistant.
- Offers a smooth finish with all paints and enamels.
- Use with R011, R012 or R024 rod frame.

Nap Length: 3/8 in



SKU	Width
912-00R2220040	4 in



Sherlock® Roller Frames

Features:

- Quick-release retaining spring locks roller in place, yet allows easy, one-rap removal.
- Smooth-rolling bearings eliminate shank wear and gray streaks.
- Durable, green fiberglass-reinforced nylon cage and endcaps.
- Chrome-plated 5/16 in shank, 90° angle.
- Full-size polypropylene grip with reinforced threads, Sherlock GT compatible.



SKU	Width
912-00R0170090	9 in

Super Doo-Z® Roller Covers

Features:

- Shed-resistant, white fabric for a virtually lint-free finish with all paints, enamels, varnishes (satin, semigloss and gloss).
- Dense fibers reduce dripping and spatter.

Nap Length: 3/8 in



SKU	Width
912-00R2050040	4 in
912-00R2050090	9 in

Paint Supplies & Accessories



Acme Deluxe Grids

Features:

- High-quality expanded steel wire, bright galvanized finish.
- Reinforced edges on all sides.



SKU	Used With
912-0F00010000	5 Gallon bucket



Sherlock® Extension Poles

Features:

- Universal zinc, die-cast threaded tip works with all popular tools.
- Hexagonal aluminum inner pole prevents twisting; rugged fiberglass outer pole.
- Easily adjusts in 6 in increments with a touch of the thumb, then locks securely in place.

Material: Aluminum

SKU
912-00R0560000
912-00R0570000
912-00R0550000

Paint Trays & Liners



Deluxe Trays and Liners

Features:

- Trays feature sturdy, ribbed roll-off area for even loading.
- Liners are rigid, form-fitting and made of clear PET.



SKU	Capacity Vol.	Material
912-00R4060110	1 qt	PET a recycled plastic

Batteries

DURACELL®

Procell® Batteries

Features:

- AA, AAA, C and D batteries are guaranteed for 7 years in storage, 9V batteries are guaranteed for 5 years in storage.
- Recommended for scheduled battery replacement programs.
- Economically packaged in bulk and individually date-coded for effective inventory management.

Battery Type: Non-Rechargeable Dry Cell Alkaline



SKU	Batt. Size	Voltage	Quantity
243-PC1500BKD	AA	1.5 V	24 Batteries per pack
243-PC2400BKD	AAA	1.5 V	24 Batteries per pack
243-PC1400	C	1.5 V	12 Batteries per pack
243-PC1300	D	1.5 V	12 Batteries per pack
243-PC1604BKD	9.0 V	9V	12 Batteries per pack

Energizer

Industrial Alkaline Batteries



Features:

- Designed for industrial, professional use.
- Long-lasting power source.
- Batteries operate well in extreme conditions.
- Date-coded and 100% mercury-free.

Voltage: 1.5 V

SKU	Batt. Size	Quantity
827-EN92	AAA	24 Batteries per pack
827-EN91	AA	24 Batteries per pack

STRAPPING PRODUCTS

Cable Ties



General Purpose Cable Ties

Features:

- Nylon 6/6 features light weight, high strength and a wide temperature range.
- Even at higher than recommended temperatures or exposure to flame, nylon does not give off toxic or irritating by-products.

Thickness: 0.054 in

Tensile Strength: 50 lb

Bundle Diam: 2 in

Material: Nylon 6/6



SKU	Length	Width
102-750GRN	7.6 in	0.18 in

Metal Detectable Cable Ties

Features:

- Impregnated with metal flakes for contamination prevention.
- Teal blue color for easy identification.

Color: Teal

Material: Nylon 6/6; Metal



SKU	Length	Width	Thickness	Tensile Strength
102-418MD	4.1 in	0.096 in	0.035 in	18 lb
102-750MD-B	7.6 in	0.18 in	0.054 in	50 lb
102-750MD	7.6 in	0.18 in	0.054 in	50 lb
102-1150MD	11.1 in	0.18 in	0.054 in	50 lb



UV Stabilized Cable Ties

Features:

- General purpose use.
- Nylon 6/6 features light weight, high strength and a wide temperature range.
- Contains increased resistance to UV light (does not totally eliminate the destructive effects of the light).

Thickness: 0.054 in

Tensile Strength: 50 lb

Material: Nylon 6/6

Width: 0.18 in



SKU	Length	Bundle Diam
102-1150UVB	11.1 in	3 in
102-1450UVB	14.6 in	4 in

Coolers & Chests



400 Series Coolers

Features:

- Ultratherm® insulation for maximum cold retention and maintains ice for up to 3 days in temperatures as high as 90°F.
- HDPE hide won't chip, peel, buckle, or rust.
- UV stabilizers prevent fading, cracking in all exposures.
- Front push-button spigot is drip-resistant.
- White FDA Grade liner is easy-to-clean and resists stains and odors.
- Wide mouth pressure fit lid for easy filling.
- Keeper cord prevents lid loss.



SKU	Width	Length	Height
385-451	13 in	14-1/2 in	20.38 in
385-431	13-1/2 in	13-1/2 in	14 in
385-4101	15-7/8 in	17-1/2 in	23-1/4 in

BENDING & FLARING TOOLS

Flaring & Swaging Tool Sets



Cutting Flaring and Swaging Kits

Features:

- Flaring and swaging tools allow a pipe fitter to adapt their materials to better suit their needs.
- For Soft Copper, Aluminum, Steel, Stainless Steel and Brass Tubing



SKU	Flaring Angle
389-275-FSCD	45°

CLAMPS & VISES

Clamps & Spreaders



Drop Forged C-Clamps

Features:

- Extra throat depth.
- Non-slip clamping on all shapes.
- Steel spindles are copper plated for spatter protection.
- Swivel pads adjust freely to bear evenly on clamped part.
- Individually boxed for easy storage and protection.

Spindle Dia: 3/4 in

Body Material: Drop Forged Steel

Handle Type: Sliding Pin

Handle Material: Steel



SKU	Opening Size	Overall Length	Throat Depth	Pressure
102-404C	3-1/4 in	4 in	3-1/4 in	6,200 lb
102-406C	6-1/16 in	6 in	4-1/8 in	6,900 lb
102-408C	8-1/4 in	8 in	5 in	6,600 lb
102-410C	12-1/4 in	10 in	6 in	8,000 lb

Locking C-Clamps

Features:

- Easy to lock.
- Easy to release.

Throat Depth: 2.625 in

Body Material: Alloy Steel



SKU	Opening Size	Overall Length
100-AB-11RI	3-3/4 in	11 in

IRWIN
VISE GRIP®

Locking C-Clamps with Swivel Pads



Features:

- Wide-opening jaws provide greater versatility.
- Swivel pads hold tapered work, awkward fabricating jobs, and delicate projects.
- Turn screw to adjust pressure and fit.
- Constructed of high-grade heat-treated alloy steel.
- Guarded release trigger quickly unlocks and protects from accidental release.

Throat Depth: 2-5/8 in

SKU	Overall Length
586-11SP	11 in

The Original™ Locking C-Clamps with Regular Tips



Features:

- Wide-opening jaws provide greater versatility in clamping a variety of shapes.
- Turn screw to adjust pressure and fit.
- Constructed of high-grade heat-treated alloy steel.
- Classic trigger release designed to provide maximum locking force.

Pressure: Adjustable Turn Screw

Material: Heat-Treated Alloy Steel

Handle Type: Vise-Grip Release

SKU	Opening Size	Overall Length	Throat Depth
586-6R	2-1/8 in	6 in	1-1/2 in
586-11R	4 in	11 in	2-5/8 in

Vises

RIDGID

TRISTAND® Portable Chain Vises



Features:

- Optimized base for more working area.
- Benders are located at the rear of the base and three tool hangers are provided.
- Integrated ground lug provides a conductive surface to connect the weld ground.
- Leg chain retains legs even when subjected to rugged use during operation and transport.
- Rugged tool tray offers prolonged stability before requiring a leg adjustment.

SKU	Pipe Cap.	Material
632-36273	1/8 in - 6 in	Ductile Iron Work Surface; Hardened Steel Jaws and Tubular Legs

FILES

Half Round Files



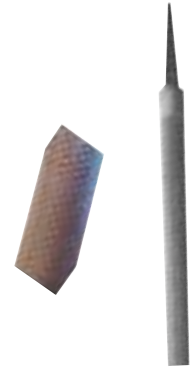
Bastard Files

Features:

- Manufactured from the finest materials and properly heat treated to produce outstanding quality.
- Versatile applications for concave, convex or flush surfaces.
- Double-cut flat side.
- Handy for filing down sharp edges.

Tooth Pattern: Flat - Double Cut

Tool Shape: Taper to Point



SKU	Cut Type	Length
100-14HRBF	Bastard Cut	14 in

HAMMERS, SLEDGES, MALLETS & AXES

Hammers



Chipping Hammers

Features:

- Hammer heads are hardened to precisely controlled temperatures for durability and strength.
- Wide-blade design removes slag faster and adds to the life of the tool.
- Drop forged, heat-treated, hardened head withstands more grinds.
- Well balanced handle grip for comfort and ease-of-use.

Handle Material: Steel

Head Material: Forged Steel

Head Length: 6 in



SKU	Overall Length	Handle Type
900-CH-200	11 in	Spring

TRUE TEMPER

Toughstrike American Hickory Engineer Hammers

Features:

- American hickory handle reduces shock.
- Double-face forged steel hammer head for maximum durability.
- Wedge/ring connection for trusted head retention.
- Used for heavy hammering, light demolition work, and driving spikes/wedges.

Handle Length: 15 in

Grip Style: Bare Wood

Handle Material: American Hickory



SKU	Head Weight
027-20184300	3 lb
027-20184600	4 lb

Toughstrike American Hickory Sledge Hammers

Features:

- American hickory handle reduces shock.
- Double-face forged steel hammer head for maximum durability.
- Overstrike protection to prevent handle breakage.
- Wedge/ring connection for trusted head retention.
- Used for heavy demolition work and driving spikes/wedges.

Handle Type: Wood

Grip Style: Bare Wood

Handle Material: American Hickory



SKU	Head Weight	Handle Length
027-20185000	8 lb	36 in

Toughstrike Fiberglass Engineer Hammers

Features:

- Fiberglass handle for increased handle strength.
- Double-face forged steel hammer head for maximum durability.
- Overstrike protection to prevent handle breakage.
- Epoxy connection for trusted head retention.
- Used for heavy hammering, light demolition work, and driving spikes/wedges.

Handle Type: Fiberglass

Grip Style: Comfort Grip

Handle Material: Fiberglass



SKU	Head Weight	Handle Length
027-20184500	4 lb	15 in

KNIVES & MULTI-PURPOSE TOOLS

Knife Blades



Blade Dispenser Containers

Features:

- Dispenses one blade at a time.
- Fits AB-99 and AB-2600.
- Fits most utility knives.

No. of Cutting Edges: 1

Quantity: 100 Blades per dispenser



SKU	Blade Shape	Blade Tip Shape
102-AB-11-100	Trapezoid	Straight Edge

Knives

Retractable Blade Utility Knives

Features:

- Features a multi-stop button and retractable blade to help minimize injuries in the workplace.
- Used with Anchor Brand replacement blades AB-11-100.

Blade Length: 1 in

Blade Material: Steel

Handle Material: Zinc Alloy

Blade Tip Shape: Triangular

Handle Type: Straight

Includes: Five blades

Height: 1.25 in

Width: 1-3/4 in



SKU	Handle Length	Overall Length
102-AB-99	6 in	7 in

RAZOR-BACK®

PROFESSIONAL TOOLS

THE RECOGNIZED LEADER IN PROFESSIONAL JOB SITE TOOLS

Since 1936, Razor-Back Professional Tools have been in the hands that tackle the toughest jobs known to man.



WHEN SAFETY MATTERS

Steel-anchored core for maximum security and head retention.



ARMOR D-GRIP

Built for heavy jobs, steel encases hardwood and prevents twisting.



BUILT TO LAST

Strong tempered, industrial-gauge steel.



MADE TOUGH

One-piece forged steel head, steel ferrules for long life.

LIMITED LIFETIME WARRANTY



LAWN & GARDEN TOOLS

Shovels & Spades

TRUE TEMPER

Eagle™ Shovels

Features:

- Steel collar for added strength at the handle/socket connection.
- Lightweight fiberglass handle resists splintering, cracking, and weathering.

Blade Type: Open-Back

Blade No.: #2

Handle Material: White Ash

Blade Material: Steel



SKU	Blade Length	Blade Width
027-1554500	10-1/2 in	9 in
027-1554300	11 in	8-1/4 in

UnionTools

Round Point Shovels

Features:

- Dura-Torque® crimp collar for super-strong head-to-handle connection.
- This shovel is of good quality and designed for light-to medium-duty jobs or for occasional users.
- Heavy duty blade.
- Ash Handle.

Blade Type: Forward Turned-Step; Open-Back

Blade No.: #2

Blade Material: Steel

Socket Length: 9 in



SKU	Blade Length	Blade Width
760-40191	11.5 in	9.25 in

Square Point Transfer Shovels

Features:

- Perfect for moving loose garden material, sand, top soil, or debris.
- Can also be used to shape beds, mix concrete, level off areas that need to be flat, or to scrape stubborn material off driveways or other hard surfaces.
- Options available for poly D-Grip short handled and long handled shovels.

Blade Type: Forward Turned-Step; Open-Back

Blade No.: #2

Handle Type: Straight

Handle Material: North American Hardwood

Blade Material: Steel

Socket Length: 9 in



SKU	Blade Length	Blade Width
760-40184	11.5 in	9.25 in

Sprayers

CHAPIN
COVER MORE GROUND

3.5 gal Industrial Concrete Open Head Sprayers

Features:

- Tri-Poxy lined steel tank provides triple protection against rust, corrosion and damage from denting.
- Featuring a large 4 in-wide mouth opening for easy filling and cleaning.
- Chemical-resistant seals and gaskets designed to handle a variety of chemicals.
- Brass pump, wand, nozzle and shut-off with lock-on feature.
- Reinforced hose with thread fittings.

Operating Pressure: 40 to 60 psi

Extension Type: Brass Wand

Hose Length: 48 in

Pump Type: Piston with Chemical-Resistant Seals and Gaskets

Handle Type: Tri-Lock Cap; Ergo

Nozzle Type: Brass Fan-Tip

Body Material: Tri-Poxy® Steel

Mounting: Hand Held

Includes: Tank; Brass Wand; Reinforced Hose



SKU	Capacity Vol.	Extension Length
139-1949	3-1/2 gal	24 in

Water Hose Parts & Accessories

Gilmour
GARDENING INNOVATION

Metal Nozzles

Features:

- Hold-open clip for continuous spraying.
- Self-adjusting "duck" packing for lifetime leak proof seal.
- Metal construction built for frequent use.
- Threaded front for adding attachments.

Handle Type: Pistol Grip

Body Material: Metal

Nozzle Type: Classic



SKU	Type	Style
305-857302-1011	Rear Control	Full Size

Water Hoses



Pro-Flow™ Commercial Duty Hoses

Features:

- Octagonal heavy-duty crushproof couplings.
- Continuous flow tube keeps water flowing even if kinked.
- Metal spring collar prevents kinking at faucet.
- Anti-bacterial lining prevents deterioration and extends hose life.

Operating Pressure: 450 psi

Reinforcement: PVC



SKU	Inside Diam	Length
027-4003600	5/8 in	50 ft

PIPE THREADING EQUIPMENT

Threaders Powered



Model 1224 Threading Machines

Features:

- An induction motor helps minimize noise.
- Reverse/Off/Forward, heavy-duty rotary-type and integral foot switch.
- Cam action, rear centering device.
- Two-speed gear box with a 3:1 ratio.
- Hammer-type chuck with replaceable rocker-action jaw inserts.
- Self-priming, gerotor-type, automatic-reversing, constant-flow oiling pump.
- Constant and proper lubrication of dies and workpiece with through-head oiling.
- Can be used with Model 161, 4 inch to 6 inch (sold separately).
- Choose from 1224 Threading Machine only (29858) or 1224 Threading Machines (26092, 26097).

Speed: 36/12 RPM

Amps: 15 A

Power Cap.: 1-1/2 hp

Phase: Single

Includes: (1) 1/4 in to 4 in NPT Hammer Chuck Machine; (1) No. 714 (914) 2-1/2 in to 4 in Receding Self-Opening Die Head; (1) No. 711 (911) 1/4 in to 2 in Universal Self-Opening Die Head; (1) No. 764 Cutter; (1) No. 744 Reamer; (3) Sets of Dies (1/2 in to 4 in); (1) gal Premium Oil; (1) F229 Spare Wheel; (1) No. 744 Cutter and No. 764 Cutter; (3) Hex Keys; 1-3/4 in Combination Wrench; (1) Tool Box



SKU	Pipe Cap.	Voltage
632-26092	1/4 in at 36 RPM; 2-1/2 in at 12 RPM - 2 in at 36 RPM; 4 in at 12 RPM	120 V AC



Model 300 Power Drive Threading Machines

Features:

- Cam-action rear centering device turns with chuck.
- Two heavy-duty support bars.
- Speed grip chuck with replaceable jaw inserts.
- Forward/Off/Reverse switch and integral On/Off foot switch.
- Lightweight, portable design.
- Self-contained oil system with adjustable flow control.
- Ideal for use with RIDGID® roll groovers.
- Convert to portable threading machine with Model 141, 2-1/2 inch to 4 inch (36620), and Model 161, 4 inch to 6 inch (36630), both Sold Separately.
- Choose from 300 Power Drive Complete (15682 and 15722) or 300 Power Drive Only (41855 and 75075).

Speed: 36 RPM

Amps: 15 A

Power Cap.: 1/2 hp

Phase: Single

Includes: (1) 300PD, Tool Only, 115V 25-60Hz 38 RPM NPT (41855); ; (1) 300PD Clip-On Tool Tray (22638); (1) 811A 1/8 in to 2 in NPT Die Head, Self-Opening, RH (97065); (1) 1/2 in to 3/4 in Universal Alloy Die Set (47745); (1) 1 in to 2 in Universal Alloy Die Set (47750); (1) 360 Cutter Assy (42370); (1) 311 Carriage with Lever (68815); (1) #32 Transport Cart (42575); (1) 341 Reamer Assy (42365); (1) 1206 Stand (42360); (1) Oiler with One Gallon Premium Thread Cutting Oil (10883)



SKU	Pipe Cap.	Voltage
632-15682	1/8 in - 2 in	115 V AC

Threaders Powered Accessories

Pipe Dies for Machine Die Heads

Features:

- Strong and durable pipe dies for use in universal die heads.
- Applicable to a wide variety of die heads.
- A convenient replacement to keep systems functioning for longer.

Pipe Cap.: 1 in - 2 in



SKU	For Model
632-47770	Universal Die Heads Nos 504A/711/713/811A/815A/816/817/842

RIDGID

Power Threading Die Heads for 2 in Threading Machines



Features:

- All die heads are through-head oiling.
- No 500A Die Head replaces the No 500 Mono Die Heads.
- Individual machine die heads do not include dies.

Pipe Cap.: 1/8 in - 2 in

Used With: Compact Threading Machine; Power Threading Machine

SKU	For Model
632-97065	1215, 1233, 535, 535A, 300 Compact Machines and 300 Power Drive

V-Head Pipe Stands

Features:

- V Head pipe stand.
- Locking ring allows for quick vertical height adjustments.
- Durable steel construction.

Height Adjustment: 28 in - 53 in

Pipe Cap.: - Up to 12 in

Wt. Cap.: 2500 lb

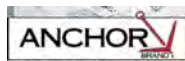
Used With: Roll Groovers; Threading Machines



SKU
632-56662

PLIERS & CUTTERS

Bolt & Chain Cutters



Bolt Cutters

Features:

- Slip resistant handles.
- Internal cam mechanism provides greater torque.
- Hardened steel jaw and blades for a clean cut.

Hardness: 42 HRC

Cut Type: Center Cut

Jaw Material: Forged Alloy Steel

Handle Type: Rubber Grips

Handle Material: Rubber; Steel

Applicable Materials: Steel



SKU	Cutting Cap.	Overall Length
103-39-018	5/16 in	18 in
103-39-024	3/8 in	24 in

Locking Pliers



WISE-GRIP® Straight Jaw Locking Pliers

Features:

- Straight jaws provide maximum contact on flat, square, or hex work.
- Ideal for tightening, clamping, twisting and turning.

Throat Depth: 1-3/4 in

Material: Alloy Steel



SKU	Jaw Opening	Overall Length
586-10R-3	1-5/8 in	10 in

WISE-GRIP® The Original™ Curved Jaw Locking Pliers with Wire Cutters

Features:

- Curved jaw puts tremendous pressure on four points of any style nut or bolt head.
- Includes convenient wire cutter.
- Constructed of high-grade heat-treated alloy steel for maximum toughness and durability.
- Guarded release trigger quickly unlocks and protects from accidental release.
- Turn screw to adjust pressure and fit, stays adjusted for repetitive use.
- Hardened teeth are designed to grip from any angle.
- Hex key adjusting screw offers controlled release and draws materials tightly together.

Throat Depth: 2-5/8 in

Material: Alloy Steel



SKU	Jaw Opening	Overall Length
586-10WR-3	1-7/8 in	10 in

Needle Nose Pliers



Solid Joint Long Nose Pliers

Features:

- Hardened and tempered.
- Comfort grip handle and broached jaws.

Jaw Width: Tapered

Handle Color: Red/Black

Handle Type: Matte Finish Cushion Grips

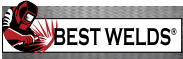
Finish: Fully Polished

Material: Drop Forged Steel



SKU	Jaw Length	Jaw Thickness	Overall Length	Cutting Length	Point Thickness
103-10-206	2 in	5/16 in	6 in	0.6 in	1/8 in
103-10-208	2-3/4 in	3/4 in	8 in	0.8 in	27/64 in

Specialty Pliers



MIG Welding Pliers

Features:

- Strong, sharp welding pliers is a must tool for mig welding operations.
- Multipurpose tool with 8 functions resulting in more efficient time and production.
- Durable carbon steel construction paired with an easy to use spring operated handle.

Jaw Shape: Double-Edged

Material: Carbon Steel



SKU	Overall Length	Wire Diam
900-YS-50	21 cm	0.8 mm - 1.5 mm

Tongue & Groove Pliers



Tongue and Groove Pliers

Features:

- CHANNELLOCK BLUE® grips for comfort.
- Undercut tongue and groove design won't slip.
- Patented reinforcing edge minimizes stress breakage.
- PermaLock® fastener eliminates nut and bolt failure.
- Choose from a variety of Straight, Smooth, or V-Jaw styles.



SKU	Overall Length	Jaw Opening	Jaw Length	Jaw Shape	No. of Adjustments
140-420-BULK	9.50 in	1.50 in	1.12 in	420® Straight	5
140-430-BULK	10 in	2 in	1.38 in	430® Straight	7
140-440-BULK	12 in	2.25 in	1.50 in	440® Straight	7
140-460-BULK	16.50 in	3.75 in	2.56 in	460 Straight	8
140-480-BULK	20.25 in	5.50 in	3 in	Bigazz® Straight	12

Tubing Cutters



Quick-Acting Tubing Cutters

Features:

- X-CEL® Knob cuts tubing more quickly and easily with a larger, more ergonomic design.
- X-CEL® Wheel Pin, ball detent design, allows users to change cutter wheel quickly, no tool needed.
- Available in models for plastic pipe or metallic tubing.
- Models 151 through 156 feature a quick-acting design, I-beam construction, hardened wear surfaces, and thrust bearing slide assemblies for smooth operation.
- Models 151 and 152 feature fold-away reamers.
- Model 151-ML is suitable for cutting multi-layer tubing.

Cutting Cap.: 1/4 in - 1-5/8 in

Includes: Fold-Away Reamer; Spare Cutter Wheel Stored in Knob

Cut Type: 151 Quick-Acting Tubing Cutter

Handle Type: Knob



SKU
632-31632

PRYING TOOLS

Bars



Pinch Point Crowbars

Features:

- Hardened, drop-forged steel construction.
- Heavy-duty tool for stubborn prying tasks and heavy lifting.
- Useful for breaking up hard surfaces.

Stock Size: 1-1/4 in

Tip Width: 1-1/4 in

Material: Heat Treated Carbon Steel

SKU	Wt.	Overall Length
027-1160100	18 lb	60 in

PUTTY KNIVES & SCRAPERS

Scrapers & Putty Knives



Ship Scrapers

Features:

- Black oxide coating for rust resistance.
- Drop forged for strength.
- Ground and hardened tip.

Blade Material: High-Carbon Steel

Handle Material: High-Carbon Steel

Blade Type: Double-End Bent Ship Scraper



SKU	Blade Width	Overall Length
103-393	1-3/4 in	15 in

STAPLERS & RIVETERS

Riveters



HP-2® Rivet Tools

Features:

- Square shoulder fulcrum pin of cold-formed heat treated steel prevents pin rotation that can elongate the engaging holes and cause premature tool failure in imitation tools.
- Handles have cushion-molded vinyl grips for comfort.

Handle Material: Carbon Steel

Includes: (4) Mounted Nosepieces; Service Wrench



SKU	Rivet Size	Body Material
466-M39000	3/32 in; 1/8 in; 5/32 in; 3/16 in	Aluminum Alloy

Staplers



T50 Heavy-Duty Staple Guns

Features:

- Features an all chromed steel housing, jam resistant mechanism, powerful coil spring, staple viewing window, and steel working parts hardened in a 1,500 degree furnace.
- Ideal for general repairs, professional uses, upholstery, insulation, and light trim.

Body Material: All Steel

Finish: Chrome



SKU	Staple Height
091-T50	1/4 in; 5/16 in; 3/8 in; 1/2 in; 17/32; 9/16 in

TOOL STORAGE

Tool Chests



Site-Vault™ Heavy-Duty Chests

Features:

- Site-Vault™ security system is a patented system with 3 locking points and a reflective orange lock indicator that shows when the box is locked or unlocked.
- Heavy-duty beveled edge lid eliminates sharp front lid corners and enhances lid strength.
- Integrated sidewall storage locker can be padlocked for personal items.
- Heavy-duty EZ-Loader 4-way skid bolsters allow fork lift loading from any side for quicker and easier transport.
- Upgraded lock system now allows usage of padlock models Master #1, #5, #175 and American #50.

Width: 20 in

Height: 24 in

Material: Steel

Wt.: 98 lb



SKU	Capacity Vol.
217-2-652990	8.3 ft³

WRENCHES

Adjustable Wrenches



Adjustable Wrenches

Features:

- Hardened and tempered.
- Precision machined jaws and knurled adjusting worm.
- Plated to resist rust.

Head Angle: 15°

Head Width: Varies

Head Thickness: Tapered

Handle Type: I-Beam

Material: Drop-Forged Alloy Steel

Finish: Chrome Plated



SKU	Opening Size	Overall Length
103-01-008	1-1/8 in	8 in
103-01-010	1-5/16 in	10 in
103-01-012	1-1/2 in	12 in
103-01-015	1-3/4 in	15 in
103-01-018	2-1/16 in	18 in

Combination Wrench Sets



14 Piece SAE Combination Wrench Sets



Features:

- Heat treated for maximum strength.
- Sizes stamped on both sides for easy identification.
- Nickel chrome plated for long lasting protection.

No. of Points: 12

Material: Chrome Vanadium Alloy Steel

Finish: Full Polish Chrome Plated

Includes: Roll-Up Pouch; 3/8 in; 7/16 in; 1/2 in; 9/16 in; 5/8 in; 11/16 in; 3/4 in; 13/16 in; 7/8 in; 15/16 in; 1 in; 1-1/16 in; 1-1/8 in; 1-1/4 in

Measuring System: SAE

SKU	Opening Size
192-CCWS4-05	3/8 in; 7/16 in; 1/2 in; 9/16 in; 5/8 in; 11/16 in; 3/4 in; 13/16 in; 7/8 in; 15/16 in; 1 in; 1-1/16 in; 1-1/8 in; 1-1/4 in

Pipe Wrenches



Adjustable Pipe Wrenches

Features:

- Hardened and tempered.
- Malleable handles with heavy duty enamel finish.
- Accurately machined jaws and adjustment nut.

Head Angle: 15°

Material: Malleable Alloy

Jaw Material: Drop Forged Steel

Handle Type: I-Beam



SKU	Pipe Cap.	Overall Length
103-01-318	2-1/2 in	18 in
103-01-324	3 in	24 in



Aluminum Straight Pipe Wrenches

Features:

- Nearly 40% lighter than comparable cast-iron models.
- Jaws and all other parts identical to Ridgid heavy duty wrenches.

Jaw Material: Alloy Steel

Handle Type: I-Beam



SKU	Pipe Cap.	Overall Length	Wt.
632-31090	1-1/2 in	10 in	1 lb
632-31095	2 in	14 in	2-1/2 lb
632-31100	2-1/2 in	18 in	3-3/4 lb
632-31105	3 in	24 in	6 lb
632-31110	5 in	36 in	11 lb
632-31115	6 in	48 in	18-1/2 lb



Heavy-Duty Straight Pipe Wrenches

Features:

- Instant grip/release.
- Heat-treated replaceable jaw.
- Easy spin nonstick adjustment nut.
- Fully floating forged hook jaw.
- Replaceable hook and heel jaws.

Material: Cast Iron Handle

Jaw Material: Steel

Handle Type: I-Beam



SKU	Pipe Cap.	Overall Length
632-31015	2 in	12 in
632-31020	2 in	14 in
632-31025	2-1/2 in	18 in
632-31030	3 in	24 in

HVAC Regulators and Flowmeters



VN Series HVAC Nitrogen-Purging Regulators/Flowmeters



Features:

- Hybrid design—regulator and flowmeter all in one.
- Easy-to-read nitrogen cylinder content gauge with preset flow rates.
- Heavy-duty brass body designed for rugged field use.
- No adaptors needed.

Gas Type: Nitrogen

Operating Pressure: - 500 psi Test; 3000 psi

Connection Type: CGA-580

Outlet Size: 1/4 in

Outlet Type: Male SAE Flare

SKU	Style
312-VN-500	Preset to Purge/Braze/Test Click Style

CLEANING PRODUCTS

Floor & Carpet Cleaners



Oil-Based Non-Sanded Floor Sweeping Compounds

Features:

- Non-abrasive sweeping compound safe to use on any floor.
- Perfect for collecting dirt and dust on all types of wood, tile, terrazzo, and finished concrete floors without scratching.



SKU	Capacity
103-FLOOR-SWEEP	50 lb

Wax-Based Floor Sweeping Compound

Features:

- Non-sanded, wax-based formula.
- Conditions as it cleans.
- Suitable for most surfaces, finished or unfinished.
- Keeps floors looking their best.



SKU	Capacity	Packing Type
103-FLOOR-SWEEP-WAX50	50 lb	Box
103-FLOOR-SWEEP-WAX150	150 lb	Drum

Glass Cleaners



Glass Cleaners

Features:

- Cleans with Ammonia-D® for a streak-free shine.
- Loosens soil upon contact.
- Won't streak or leave a film.
- Also cleans chrome, stainless steel, Plexiglas® and other hard surfaces.
- Contains no phosphates.

Chemical Compound: Ammonia-D

Capacity Vol.: 32 oz



SKU
889-322338

PERSONAL HYGIENE

Hand Cleaners



Natural Orange™ Pumice Hand Cleaners

Features:

- Pumice scrubbing particles get hands clean fast.
- Lotion formula provides powerful yet gentle cleaning performance.



SKU
315-0955-04



Hand Cleaner Towels

Features:

- Clean, citrus-scented formula loosens and dissolves industrial soils while leaving hands free from dryness and irritation.
- Rough Touch® blue towel locks in soil to prevent it from transferring back onto hands and surfaces.
- Hands are left feeling clean with no sticky residue and no rinsing required.



SKU	W x L Per Sheet
253-42272	10 in x 12 in

Vacuums



M18™ Cordless Wet/Dry Vacuums

Features:

- 20% higher suction than competition.
- Built in blower port.
- HEPA rated high efficient filter for dust collection.
- On board hose and accessory storage.
- Quieter cordless wet/dry vacuum.
- Reusable and washable filter.
- Tool box design for excellent portability.
- HEPA rated high efficient filter for dust collection.
- Reusable and washable filter.



Tank Material: Plastic

Includes: 6 ft Flexible Hose; Crevice Tool; HEPA Filter; Utility Nozzle

SKU	Capacity Vol.	Air Consumption
495-0880-20	2 gal	45 ft³/min

WASTE RECEPTACLES

Trash Can Liners



FLEX-O-BAG® Trash Can Liners and Contractor Bags

Features:

- Convenient large rolls of heavy industrial weight plastic bags in handy dispenser boxes and extra-long twist ties.
- Also included are Hold-Tite rubber bands to secure bag to can top; excluding Heavyweight Contractor Bags (HB42-20).
- No side seams to split and no gussets to weaken the bottom.
- Options available for Extra Heavy-Duty Contractor Bags, Heavyweight Contractor Bags, High Count Industrial Grade Trash Can Liners, and Tall Kitchen Bags.



Thickness: 3 mil

Quantity: 30 Bags per Dispenser

SKU	Capacity Vol.	Height	Width
795-HB55-30	- 55 gal	56 in	36 in

Trash Cans



BRUTE® Round Containers without Lid

Features:

- Durable, heavy-duty containers for a variety of uses.
- Proprietary design plus a UV inhibitor ensures long life.
- Venting channels reduce the force required to remove a full can liner.
- Integrated cinches secure liners for efficient knot-free changes.
- Seamless construction makes cleaning the container easier.
- Contoured base handles improve grip, reduce strain, and improve efficiency.
- Reinforced rims add strength and durability while transporting.
- Built-in, rounded handles allow easy, non-slip lifting and anti-jam nesting.
- Reinforced base built to withstand rough surfaces for extended life.
- Gray, white and yellow are USDA Meat and Poultry Equipment Group Listed and assist in complying with HACCP guidelines.
- Certified to NSF Standard #2 (gray, white and yellow) and Standard #21 (all colors).
- Lids sold separately.



Dia.: 26-1/2 in | Material: Heavy-Duty Plastic

SKU	Capacity Vol.	Height
640-FG265500GRAY	55 gal	33 in

WIPING PRODUCTS

Towels & Wipers



Multi-Purpose Scrubbing Wipes

Features:

- Dual textured wipe, a textured side and a smooth side.
- Extra large, durable wipes, 10 inch x 12 inch.
- Multi-purpose to use on hands, tools, and surfaces.
- No water needed.
- Contains no harsh chemicals.
- Leaves hands feeling clean and refreshed.

Quantity: 72 Sheets Per Roll



SKU	W x L per sheet
103-360726	10 in x 12 in



Household Roll Towels

Features:

- Strong and absorbent 2-ply embossed toweling.
- Made from 100% recycled fiber.
- Green Seal Certified.

Quantity: 85 Sheets per Roll



SKU	W x L per sheet
886-H4000	11.0 in x 9.0 in



Original™ Multi-Purpose Shop Towels

Features:

- Ideal for changing oil, refilling fluids and general maintenance.
- Strong, absorbent towel is great for wiping hands, tools and cleaning up grease, oil, grime and fluids.
- Works well when wet.



SKU	W x L per sheet	Quantity
412-75130	11 in x 9.4 in	55 Sheets per Roll
412-75190	9 in x 12 in	200 Sheets per Roll



Cross-Check™ Tamper Proof Torque Mark

#1 TOP SELLER

FLUORESCENT
UNDER BLACK/UV LIGHT ONLY

VISUALLY
DETECTS LOOSE NUTS AND BOLTS

PROVIDES
WARRANTY PROTECTION

FULLY CURES
IN 24 HOURS

BOEING SPECIFICATION
BMS8-45 TYPE II



DYKEM® Cross-Check™ provides a convenient visual method for identification of vibratory loosening or tampering in nuts, bolts, fasteners, and assemblies. Provides warranty protection against tampering. Marks will be easily broken if parts are tampered with or become loose. Highly visible under ambient light. Excellent adhesion to metal and other substrates.

Dry to touch/handle in 30-40 minutes. 80% curing occurs between 48-72 hours. Completion of curing takes place between 7-10 days Exposing to elevated temp - OR blowing hot air can speed up the drying/curing process.

ADDITIONAL FEATURES

- It's like a wax seal for critical holds and fastening
- Safe for most surfaces
- Highly visible
- Excellent adhesion
- Dries to the touch: 1-2 hours
- GHS compliant labeling
- Two year shelf life



AVAILABLE PRODUCT

ORS Item #	MFG #	Color	Container	Case Pack	Case Wt.
253-83314	83314	Orange*	1 oz Tube	24	2 lbs.
253-83315	83315	Green*	1 oz Tube	24	2 lbs.
253-83316	83316	Red*	1 oz Tube	24	2 lbs.
253-83317	83317	Yellow*	1 oz Tube	24	2 lbs.
253-83318	83318	Blue*	1 oz Tube	24	2 lbs.
253-83319	83319	White	1 oz Tube	24	2 lbs.
253-83320	83320	Pink	1 oz Tube	24	2 lbs.
253-83321	83321	Gray	1 oz Tube	24	2 lbs.

*Orange, green, red, yellow and blue fluoresce under black/UV light only



SCRUBS®

Stainless Steel Cleaner Towels

Features:

- Stainless steel cleaner and polish in convenient premoistened towels.
- Clean, polish, brighten and protect in one step without dripping or overspraying.
- Prevent water marks and corrosion while preserving the high luster of stainless steel.
- For use on stainless, steel, chrome and aluminum.

Quantity: 30 Sheets per Container



SKU	W x L per sheet
253-91930	9.75 in x 10.5 in

CRAYONS

MARKAL®



Paintstik® Original B® Solid Paint Markers

Features:

- Solid paint marker combines the durability of paint in the convenience of a crayon.
- Superior marking performance on oily, icy, wet, dry, or cold surfaces.
- Weather-resistant and UV-resistant for long-lasting marks.
- Works on rough, rusty, or dirty surfaces.

Length: 4-3/4 in

Dia.: 11/16 in

SKU	Color
434-80220	White
434-80221	Yellow

MARKERS

DYKEM®

BRITE-MARK® Medium Paint Markers



Features:

- Make permanent bright marks on metal, rubber, plastic, glass, concrete, leather, stone, wood, vinyl and more.
- Formula is not xylene-based.
- Valve actuated mechanism prevents paint in barrel from drying when cap is left off.
- Heavy duty aluminum body with large paint capacity.
- Ideal for color coding.
- Bullet tips are replaceable to ensure complete use of paint in each marker.
- Drying Time: 25 – 35 seconds.

Tip Size: Medium; Fiber #15

Tip Type: Bullet

SKU	Color
253-84003	White

MARKAL®



Paint-Riter® Valve Action® Paint Markers

Features:

- Variety of colors for improved mark identification, quality control, and parts inspection.
- Fast-drying, permanent paint for immediate handling reduces work downtime.
- Xylene-free paint reduces user health risks and makes for a safer marking tool.
- Dura-Nib medium bullet tip resists wear to provide long marking life.
- Durable metal barrel and clip-cap reduce breakage and store easily in pocket.

Tip Size: 1/8 in

Tip Type: Round Bullet

Temp Range: -50° F - 150° F

SKU	Color
434-96820	White
434-96821	Yellow
434-96822	Red
434-96823	Black
434-96825	Blue



DRIVEN TO OUTPERFORM.™

M18 FUEL™ is engineered for the most demanding tradesmen in the world. Delivering unrivaled performance in a compact structure, all M18 FUEL™ products feature three MILWAUKEE® exclusive innovations — the POWERSTATE™ Brushless Motor, REDLITHIUM™ Battery Pack and REDLINK PLUS™ Intelligence Hardware and Software — that deliver unmatched power, run-time and durability. The M18 FUEL™ 4-1/2" / 5" Dual-Trigger Braking Grinder is the next advancement in angle grinders, providing greater control through dual-trigger activation, a permanent side handle, and AUTOSTOP™ kickback control.

M18 FUEL

- 
- 1 POWERSTATE™ BRUSHLESS MOTOR**
- MILWAUKEE® Designed and Built Brushless Motor
 - Outperforms All Leading Competitors

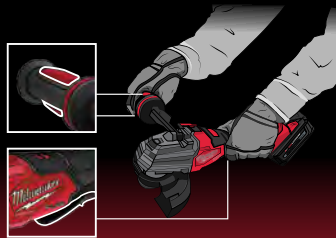
- 
- 2 REDLINK PLUS™ INTELLIGENCE**
- Most Advanced Electronic System on the Market for Maximum Performance
 - Total System Communication with Overload Protection Increases Tool Life



- 
- 3 REDLITHIUM™ BATTERY PACK**
FITS M18™ TOOLS
- Battery and Charger Not Included.

DUAL-TRIGGER, TWO-HANDED OPERATION

MANDATORY FOR OPERATION



PERMANENT SIDE HANDLE, GREATER CONTROL

PROVIDES 15 POSITIONS



AUTOSTOP™ CONTROL, ADVANCED KICKBACK PROTECTION

SENSES KICKBACK AND STOPS ROTATION



SPECIFICATIONS

DESCRIPTION	SPECIFICATIONS
No Load RPM	3,500 – 8,500
Wheel Diameter	4-1/2" / 5"
Switch Type	Dual Paddle, No-Lock
AUTOSTOP™ Kickback Protection	Yes
RAPIDSTOP™ Brake	Yes
E-Clutch	Yes
Overload Protection	Yes

DESCRIPTION	SPECIFICATIONS
Variable Speed	Yes
ONE-KEY™	Yes
Length (Tool-Only)	14.1"
Width (Tool-Only)	5.2" (Handle In) 10.3" (Handle Out)
Height (Tool-Only)	5.4"
Weight (Tool-Only)	5 lbs



**M18 FUEL™
4-1/2" / 5" Dual-Trigger
Braking Grinder (Tool-Only)
495-2986-20**

Includes: 2986-20 4-1/2" / 5" Enhanced Safety Grinder, T27 Guard, T1 Clip-On Guard, Back Flange, Wrench and Flange Nut.
Battery and Charger Not Included.





Silver-Streak® Metal Markers with Mechanical Holder



Features:

- Highly-visible marks illuminate when cutting or welding.
- Superior to soapstone in markability and durability-will not rub, burn, or blow off surface.
- Marks on oily, wet or rusty metals, and will not scratch or abrade surfaces.
- Durable, mechanical holder prevents stick breakage and features a convenient, built-in sharpener, and pocket clip for easy storage.
- Refills (96007) available.

Tip Size: 1/8 in

Tip Type: Round

SKU
434-96006



INKZALL™ Ink Markers

Features:

- Features clog resistant tips and the ability to write through dusty, wet, or oily surfaces.
- Designed for writing on rough surfaces, such as OSB, cinder block, and concrete.
- Built-in hard hat clip for easy storage and access.
- Anti-roll body design plus convenient lanyard hole.
- Fine point, ultra fine point, and chisel tip options available.

SKU	Tip Type
495-48-22-3100	Fine
495-48-22-3102	Medium Point



Fine Tip Permanent Markers

Features:

- Permanent alcohol based ink that is fade and water resistant.
- Pocket clip for portability.

Tip Type: Bullet

Quantity: 36 Markers per Container



SKU
652-35010

PENCILS



Silver-Streak® Welders Pencils

Features:

- Economical, high-strength pencil is ideal for marking all types of metal surfaces – even oily, rusty or wet surfaces.
- Marks resistant to torch flames, will not rub off or burn off like soapstone.
- Highly visible marks illuminate when cutting or welding.
- Durable marks will not scratch or abrade metal surfaces.
- Hexagonal shape reduces barrel roll.
- Pre-sharpened pencils can be easily resharpened with any standard pencil sharpener.
- Highly visible silver color for darker surfaces.

Length: 7 in

SKU	Lead Grade
434-96101	#2

SOAPSTONE HOLDERS



Standard Soapstone Holders

Features:

- Pocket clip.
- Positive lock adjustment.
- Spring tension friction guide for soapstone.

Includes: Pocket Clip; Soapstone

SKU	Shape	Length
900-RH-30	Round	5 in
900-SH-10	Flat	5 in



Flat Soapstone Holders

Features:

- Quality construction for durability and appearance.
- Spring steel pocket clip oversized to fit leather aprons.
- Non-corrosive channel with brass indexing trigger provides superior sliding action.
- Practical design allows for one handed operation and easy use.
- Brass trigger depresses and slides to proper alignment hole and snaps back to lock in position.

Includes: Holder only



SKU	Length
326-400-1	5 in

SOAPSTONES



Soapstones

Features:

- All white texture for excellent marking quality.
- Grain cut to ensure good strength and long service life.
- Marks will not contaminate welds and are easily removed.
- Low water content for increased hardness and resistance to breakage.

Length: 5 in

SKU	Shape
900-FL-5	Flat
900-RD-5	Round

CARTS & TRUCKS

Hand Trucks



D-Handle Hand Trucks

Features:

- Holds a maximum capacity of 800 pounds.
- Stands on its own.

Wheel Width: 4 in

Wheel Type: Pneumatic with Steel Hub; 5/8 in Ball Bearing

Height: 50 in

Width: 19 in

Handle Type: D-Handle

Material: Rubber Wheels; Steel; Steel Hub

Wt.: 25 lb



SKU	Load Cap.	Wheel Diam
310-30019	800 lb	10 in

Tilt Carts



Structural Foam Tilt Trucks

Features:

- Fits through standard commercial doorways and onto elevators easily.
- Non-marking casters reduce touch-up cleaning.
- Constant force design allows for controlled dumping by one person.
- Easy to clean and virtually maintenance free.
- Unique "steering wheel" handle provides excellent maneuvering capability.
- Lid not Included.

Height: 38 in

Width: 30.25 in

Length: 64.5 in



SKU	Capacity Vol.	Load Cap.
640-FG101300BLA	0.75 yd ³	1000 lb

Utility Carts

Utility Carts

Features:

- Sturdy structural foam construction won't rust, dent, chip, or peel.
- Rounded corners protect walls and furniture.
- Lightweight and maneuverable.

Width: 25-7/8 in

Depth: 45-1/4 in



SKU	Load Cap	Height
640-FG452088BLA	500 lb	33-1/4 in

FLANGE PINS & ALIGNERS



Two Hole Pins

Features:

- Sturdy two hole pins are machined from hardened steel for added durability and longevity.
- Utilize fast double lead threads instead of ACME threads for a more reliable hold over time.
- Lightweight.

Hole Diam: 1/2 in - 1-7/16 in



SKU	Material	Pin Type
496-42050-T	Alloy Steel	Threaded

LEVELS



True Blue® Heavy-Duty Magnetic Torpedo Levels

Features:

- High contrast e-BAND™ vials highlight the edge of the bubble.
- V-Groove working edge for accurate alignment on pipe or conduit.
- Aluminum frame with top read window.

No. of Vials: 3

Vial Positions: 45°; Level; Plumb

Base Type: Magnetic; V-Groove

Body Material: Aluminum



SKU	Length
272-em81.9	9 in

SQUARES

True Blue® Combination Squares

Features:

- True Blue® vial for accuracy.
- Machined square head.
- Self-aligning drawbolt, hardened scriber.
- Etched blade with permanently marked graduations.

Graduation(s): 16ths, 32nds

No. of Scales: 1

Increment @ Scale: 1/16 in @ 1 in

Material: Steel

Finish: Matte

Measuring System: Inch

Wt.: 1/2 lb



SKU	Blade Length	Blade Width
272-e250	12 in	1 in

COVERING PRODUCTS

Tarps



Multiple Use Tarps

Features:

- Sun and fade resistant.
- Rot and rust proof.
- Reinforced hem.
- Heat-sealed seams.
- Grommets every 3 ft.

Material: Polyethylene

Thickness: 5 mil

Width: 20 ft



SKU	Length
101-2020-TARP	20 ft
101-2030	30 ft

DRAIN CLEANING & INSPECTION EQUIPMENT

Drain Cleaners



K-400 Drum Machine Drain Cleaners

Features:

- Integrated transport cart allows for easy movement to and from the job site.
- Heavy-duty, over-molded rubber wheels easily navigate over bumps and up stairs.
- Integrated folding handle folds up for easy transport and locks in low position during drain cleaning operation to minimize space requirements.
- Cable control system causes the drum to stop spinning when the blade becomes lodged in a blockage, limits potential for cable to flip over in the drum and helps to indicate to operator when blockages are encountered.
- All K-400 Machines come with RIDGID® Drain Cleaning Gloves and Operator's Manual.

Drain Size: 3 in - 4 in

Voltage: 115 V



SKU	Speed	Pipe Diam
632-26998	165 RPM Motor Spins Cable	3 in - 4 in
632-27013	165 RPM Motor Spins Cable	3 in - 4 in

RIDGID

K-45 Sink Machines

Features:

- Excellent for small line cleaning.
- Advanced two-way AUTOFEED® control keeps hands and work area clean.
- Lightweight, easy-to-use, no setup required.
- Two-piece twist lock canister with interchangeable inner drum.
- Inner drum prevents water leaks and greatly reduces cable flip-over inside the drum.
- Inner core cables are vinyl-wrapped to prevent core from rusting to spring, provides good flexibility and cleaning power.

Drain Size: 3/4 in - 3 in

Voltage: 115 V



SKU	Speed	Pipe Diam
632-35473	600 RPM	3/4 in - 3 in

K-7500 Drain Cleaners

Features:

- Features performance, cable control, durability and maneuverability demanded by professional users.
- Audible and visual signals for the operator.
- Inner-drum and ball bearing distributor arm work with motor and gearbox system to reduce chance of cable flip-over inside the drum.
- Powerful AUTOFEED® mechanism has grease fittings and an open design for easy maintenance.
- Two position stair climber eases transport and loading to eliminate extra cost for loading wheels.
- Narrow profile lets the machine to fit through bathroom doors.
- Handles adjust to desired height to ensure balanced transport.

Drain Size: 3 in - 10 in

Voltage: 115 V



SKU	Speed	Pipe Diam
632-60052	200 RPM	3 in - 10 in

POWER SPIN+ with AUTOFEED® Drain Cleaners

Features:

- AUTOFEED® Trigger Technology design helps you feed and retrieve the cable without touching it.
- Attached 1/4 inch X 25 ft Bulb Head cable provides good flexibility and cleaning power.
- Dual power operation allows you to rotate cable manually or with a power drill.

Drain Size: 1-1/2 in - 1/2 in



SKU	Speed	Pipe Diam
632-57043	500 rpm	1/2 in - 1-1/2 in

Drain Cleaning & Inspection Equipment Parts & Accessories

RIDGID

Drain Cleaner Parts and Accessories

Features:

- Replacement parts and accessories for drain cleaning systems.
- For use with a variety of systems.



SKU
632-60047R

COMPRESSORS, BLOW GUNS, HOSES & FITTINGS

Blow Guns

GUARDAIR®

Long John® Safety Air Guns

Features:

- Safety air guns are ideal for cleaning inaccessible and hard-to-reach areas.
- Use to blow off floor debris, clean masonry forms, tanks, ovens, molds and rafters, as well as machinery and storage areas.

Operating Pressure: 150 psi

Material: Aluminum Extension

Noise Level: 107 dB

Air Consumption: 34 cfm

Output: 2 lb

Inlet Size: 1/4 in (FNPT)



SKU	Extension Length
335-75LJ012AA	12 in
335-75LJ024AA	24 in

CORDLESS TOOL BATTERIES & CHARGERS

Batteries, Cordless Tool

DEWALT**20V MAX* 5.0AH XR® Starter Kits****Features:**

- 20V MAX* 5.0Ah XR Battery for longer runtime and improved performance.
- Charges all 12V-20V MAX* Batteries - 4 amp charge rate charger.
- Kit includes Soft Bag for additional tool storage

Batt. Type: Lithium-Ion

SKU	Voltage	Batt. Cap.
115-DCB205-2CK	20 V	5.0 Ah

20V MAX* DEWALT POWERSTACK™ 5Ah Batteries**Features:**

- The non-marring over-molded rubber base also helps to protect finished surfaces.
- 2X lifespan provides more overall investment value.
- Quickly check state-of-charge with 3-LED fuel gauge.

Batt. Type: Lithium-Ion

SKU	Voltage	Batt. Cap.
115-DCBP520	20V	5 Ah

FLEXVOLT® 20 V/60 V MAX* Batteries**Features:**

- FLEXVOLT® 20V/60V Batteries change voltage when you go from 20V MAX* to 60V MAX* tools.
- 3-LED Fuel Gauge Charge Indicator.
- When used with 20V MAX* tools these batteries provide up to 6X the runtime.

Batt. Type: Lithium-Ion

SKU	Voltage	Batt. Cap.
115-DCB609	20 V/60 V	9.0 Ah
115-DCB609-2	20 V/60 V	9 Ah
115-DCB615	20 V; 60 V; 120 V	15 Ah

DEWALT**MAX* XR® Batteries****Features:**

- Premium XR® Lithium Ion pack provides up to 33% more capacity than standard 20 V MAX* battery packs.
- 3-LED fuel gauge system allows immediate feedback on state of charge.
- No memory and virtually no self-discharge for maximum productivity and less downtime.

Batt. Type: Lithium-Ion**Batt. Cap.:** 5 Ah**Voltage:** 20 V

SKU	For Model
115-DCB205	DCG413B-B3; DCG413P2-AR; DCG413P2-B2; DCG413P2-B2C; DCG413P2-BR
115-DCB205-2	DeWalt® 20-Volt MAX tools

Milwaukee**M18™ REDLITHIUM™ HIGH OUTPUT™ HD 12.0 Battery Packs****Features:**

- Best-in-class construction: offers long-lasting performance and the best protection against jobsite conditions.
- Fuel gauge Onboard: displays remaining run-time.
- Versatility: powers more than 150 M18™ cordless solutions.

For Model: Milwaukee® M18™ Cordless Power Tools

SKU	Voltage	Batt. Cap.
495-48-11-1812	18 V DC	12.0 Ah

M18™ REDLITHIUM™ HIGH OUTPUT™ XC Battery Packs**Features:**

- REDLINK™ Intelligence provides optimized performance and overload protection using total system communication between tool, battery, and charger.
- Fuel gauge onboard displays remaining runtime for less downtime on the job.
- Offers long-lasting performance and durability.
- Delivers fade-free power in extreme jobsite, weather, and environmental conditions.
- Powers more than 150 Milwaukee M18™ cordless power tools.
- Options available for 6.0 Ah and 8.0 Ah capacities.

Batt. Type: Rechargeable Lithium-Ion**For Model:** Milwaukee® M18™ Cordless Power Tools

SKU	Voltage	Batt. Cap.
495-48-11-1862	18 V	6.0 Ah
495-48-11-1880	18 V	8.0 Ah



M18™ REDLITHIUM™ XC 5.0 Ah Extended Capacity Battery 2-Pack



Features:

- REDLINK™ Intelligence provides optimized performance and overload protection using total system communication between tool, battery and charger.
- Best-in-class construction; offers long-lasting performance and durability.
- Onboard fuel gauge displays remaining runtime for less downtime on the job.
- Its all-weather performance capability delivers fade-free power in extreme jobsite conditions.

Batt. Type: Lithium-Ion

For Model: Milwaukee® M18™ Cordless Power Tools

SKU	Voltage	Batt. Cap.
495-48-11-1852	18V	5 A-h

Battery Chargers



20V/60V MAX* 4 Port Lithium ION Battery Charger



Features:

- This DEWALT charger is a four-port fast charger that charges 12V MAX, 20V MAX, and 60V MAX batteries at the same time. This fast charger quickly charges a 4.0Ah 20V MAX battery in 40 minutes, and a 6.0Ah 20V MAX battery in 60 minutes. It is also designed to fit the Tool Connect Tag, and is ToughSystem compatible.

Charging Time: 1 h

For Model: DCB204, DCB606

Cord Length: 6.56 ft

Input Voltage: 120V

Housing Material: Plastic

Power Source: Battery Powered

Wt.: 8.6 lb

SKU
115-DCB104



M18™ Dual Bay Simultaneous Rapid Chargers



Features:

- Capable of charging up to 2 battery packs at the same time at a Rapid Charge speed.
- Internal fan maximizes charger performance.
- Integrated hang holes for wall mounting.
- The charger slowly flashes green when the battery reaches 80% state of charge.
- (2) M18™ Ports.

For Model: M18™ Batteries

Input Voltage: 120 to 127 AC

Power Source: Corded

SKU	Batt. Type
495-48-59-1802	Lithium-Ion

CUTTING TOOLS

Band Saws



Powerband Matrix II HSS Bi-Metal Portable Bandsaw Blades

Features:

- Cuts harder materials.
- Fits Black & Decker, Greenlee, Milwaukee, Rockwell, Ridgid, Porter-Cable, Skil, and Unitec machine models.
- For general purpose cutting on portable bandsaw machines.
- Ready-to-use.
- Welded length.

Width: 1/2 in

Thickness: 0.020 in

Teeth Per Inch: 18

Quantity: 3 Blades per Sleeve

SKU	Cutting Length
681-14602	44-7/8 in



M18 FUEL™ Compact Band Saw Kits



Features:

- POWERSTATE™ brushless motor delivers the fastest cutting speed of any compact band saw.
- Largest Capacity in it's Class: Versatility to cut up to 3-1/4 in X 3-1/4 in material in a single pass.
- CPT Constant Power Technology™: maintains cut speed in the toughest applications for optimal performance.
- Jobsite Armor Technology™: proprietary composite material and crush zone barriers provide long lasting rugged protection.

Cutting Cap.: 3-1/4 in x 3-1/4 in

Includes: (1) Extreme Thick Metal 8/10 TPI Band Saw Blade; (2) M18™ REDLITHIUM HIGH OUTPUT™ CP3.0 Battery; (1) M18™ & M12™ Rapid Charger

SKU	Voltage	Batt. Cap.
495-2829-22	18 V	3.0 Ah

M18 FUEL™ Deep Cut Band Saws



Features:

- POWERSTATE™ Brushless Motor for increased cutting speed and power through the toughest applications.
- REDLINK PLUS™ Intelligence provides optimized performance and overload protection using total system communication between tool, battery, and charger.
- CPT™ Constant Power Technology maintains cut speed in the toughest applications for optimal performance.
- Jobsite Armor Technology™ is proprietary composite material and crush zone barriers provide long lasting rugged protection.
- All metal direct drive delivers maximum tool life with all metal direct drive gearing system, while requiring less servicing than a chain drive.
- Tool-Free locking adjustable shoe is a button actuated tool-free design allows user to quickly adjust from an extended shoe to no shoe in seconds.
- LED light illuminates work surface for increased accuracy and productivity.
- Dual-Actuation Trigger provides enhanced control and productivity.
- Versatility to cut up to 5 inch by 5 inch material in one pass and adjustable shoe allows for less tool rotation when cutting material above 5 inches.
- Available as tool only or kits.

Cutting Cap.: 5 in x 5 in | **Speed:** 380 SFPM

Length: 21 in | **Wt.:** 15 lb

Batt. Cap.: 5.0 Ah | **Voltage:** 18 V DC

SKU	Batt. Type	Includes
495-2729-20	Compatible with all M18™ Batteries (Sold Separately)	(1) M18 FUEL™ Deep Cut Band Saw (Tool Only)(2729-20)
495-2729-22	M18™ REDLITHIUM™ XC5.0 Extended Capacity	(1) M18 FUEL™ Deep Cut Band Saw (Tool Only)(2729-20); (2) M18™ REDLITHIUM™ XC5.0 Extended Capacity Battery Pack (48-11-1850); (1) M18™ and M12™ Multi-Voltage Charger (48-59-1812); (1) Carrying Case; (1) Blade



M18™ Fuel Cordless Band Saws



Features:

- Compact light weight design for cutting overhead and in tight places.
- Cuts most common materials for electrician, plumber and mechanical cutting applications.
- LED work light illuminates the cut line in dark areas.
- Tool-Free locking adjustable shoe: Button actuated tool-free design allows user to quickly adjust from an extended shoe to no shoe in seconds.

Cutting Cap.: 3-1/4 in

Length: 17.9 in

Includes: Tool Only

SKU
495-2829-20

Chop & Cut-Off Saws



Metal-Cutting Saw Blades



Features:

- Evolution saw blades are designed to deliver maximum performance by using the highest grade carbide, hardened blade bodies, and ultra high-grade brazing techniques.
- All offer premium quality.
- Designed to increase performance.

Arbor Diam: 1 in

No. of Teeth: 66

Speed: 1600 rpm

Cutting Edge Material: Carbide

Applications: Square Tube; Angle Iron; Mild Steel Plate; Pipe; Tube; Ferrous Metals

Wt.: 3.35 lb

SKU	Blade Diam	Thickness
510-14BLADEST	14 in	0.079 in



Metal-Cutting Chop Saws

Features:

- Lightweight stamped steel base with integrated bench mounting holes.
- Quick-release vise with robust square-threaded rod for fast and secure clamping.
- Accurate and durable cast steel vice with 0° to 45° miter capacity.
- Compact design with a head lock-down pin and carry handle for easy transportation.
- Chip deflector directs chips away from the operator and reduces cleaning time.
- Ergonomic, ambidextrous trigger with comfortable textured grip.
- Attachable V-shape block included for secure clamping of round and square tube.
- Easy blade change with integrated tool storage.

Power Cap: 60 Hz

Voltage: 120 V

Amps: 15 A

Speed: 1,450 RPM



SKU	Blade Diam	Arbor Diam
510-S380CPS	14 in	1 in



60V MAX* Brushless Cordless Cut-Off Saws

Features:

- Onboard battery box can be latched, sealed, and is large enough to accommodate the DCB615 battery.
- Built-in WIRELESS TOOL CONTROL™ functionality designed to enhance runtime and worksite productivity by allowing it to be linked to other compatible tools and operated cord-free.
- All-metal drivetrain requires no belts to maintain or adjust saw tension.
- Engineered for visibility and accessibility when cutting in tight spaces with a 5-position guard to adjust cut angle.
- Perform horizontal and vertical cuts with a 3-position front handle.
- OSHA Table 1 Compliant for dust management with dual-sided water feed system.
- Tag Ready™ so users and companies can simply attach a DEWALT Tag™ (sold separately) and track its location via the DEWALT Tool Connect™ app.

Control Type: 2-Stage Trigger

Includes: (1) DCS692 9 in Cut-Off Saw; (2) DCB609 Batteries; (1) Fast Charger; (1) DWAFV8918 Ceramic Metal Cut-Off Wheel; (1) DWAFV8900 Diamond Cutting Wheel



SKU	Blade Diam
115-DCS692X2	9 in

Circular Saws



Endurance® Carbide Circular Saw Blades

Features:

- Endurance blades offer faster cutting and extra long life for contractors.
- Carbide teeth made of C3 grade micro ground carbide keeps the cutting edge sharper for longer periods of time.
- A hardened alloy steel body is used to ensure straight, accurate cuts.
- Specially engineered heat vents and expansion slots prevent blade distortion and increase blade life.
- All of these features add up to a good quality blade that contractors can depend on, time and time again.

No. of Teeth: 42

Teeth Per Inch: 5.25



SKU	Blade Diam	Arbor Diam
495-48-40-4515	8 in	5/8 in



FLEXVOLT® Cordless Worm Drive Style Saw Kits

Features:

- Designed with blade oriented to the left of the motor and the handle positioned at the rear of the saw for easy line of sight.
- Bevel capacity of 53° with stops at 45° and 22.5°.
- TOOL CONNECT™ Tag-Ready product.

Blade Dia: 7-1/4 in

Arbor Dia: 5/8 in

Includes: (1) FLEXVOLT® 60 V MAX* Saw; (1) DCB118 20V MAX Fan Corded Fast Charger; (1) DCB609 FLEXVOLT® 20 V/60 V MAX 9.0 Ah Battery; (1) FLEXVOLT® Carbide Tipped 7-1/4 in Circular Saw Blade; Blade Wrench; Contractor Bag; User Instruction Manual



SKU	Voltage	Batt. Type
115-DCS577X1	60 V	Lithium-Ion

Reciprocating Saws



THE TORCH™ Bi-Metal SAWZALL® Blades

Features:

- Metal-cutting blades with the Double Duty Upgrade™ feature a tooth form optimized for maximum durability.
- Tough Neck™ ribs strengthen the blade tang and minimize breakage.
- Grid Iron™ honeycomb pattern increases blade rigidity to resist blade buckling.
- Ideal for making tough, straight cuts.



Teeth Per Inch: 14

Applicable Material: Scheduled 80 Pipe; Angle Iron

Cutting Edge Material: Bi-Metal Tipped

Material: Bi-Metal

SKU
495-48-00-8787

M12 FUEL™ HACKZALL™ Reciprocating Saws

Features:

- One-handed design provides superior control & versatility over a standard recip saw.
- Compact size allows for cutting in tight spaces, and light weight makes overhead work easier.
- POWERSTATE™ Brushless Motor supplies constant power for faster cuts and reduced heat for extended life.
- REDLINK PLUS™ Intelligence provides optimized performance and overload protection using total system communication between tool, battery and charger.
- REDLITHIUM™ XC 4.0 Battery Pack (not included) provides superior pack construction, more work per charge and more work over the life of the pack than competitive batteries.



Batt. Type: Lithium Ion

Stroke Length: 7/8 in

Length: 14 in

Handle Type: Soft Grip

SKU	Voltage
495-2719-20	18 V



M18 FUEL™ SAWZALL® Cordless Reciprocating Saws



Features:

- POWERSTATE™ Brushless Motor for increased cutting speed and power through the toughest applications.
- REDLINK™ Plus Intelligence provides optimized performance and overload protection using total system communication between tool, battery, and charger.
- Anti-corrosion blade clamp delivers prolonged blade clamp durability with less downtime due to corrosion.
- Metal reinforced battery connection provides improved durability and battery retention over life.
- Lever action QUIK-LOK™ blade clamp provides fast and easy blade changes.
- Built-in LED light illuminates the work surface while cutting.
- Adjustable shoe extends the life of the blade.
- 1-1/4 inch stroke length removes more material with each stroke.
- Hang hook allows for convenient storage on the job.
- Compatible with all M18™ batteries and M18™ chargers.
- Options available for bare tool only and kits with battery packs.

Batt. Type: All Rechargeable M18™ Batteries

Stroke Length: 1-1/4 in

Cycle Rate: 3,000 SPM

Length: 17.1 in

Control Type: Trigger

Handle Type: D-Handle

Includes: (1) M18 FUEL™ SAWZALL® Reciprocating Saw (Tool Only) (2821-20); (2) M18™ REDLITHIUM™ XC5.0 Extended Capacity Battery Packs (48-11-1850); (1) M18™ and M12™ Multi-Voltage Charger (48-59-1812)

SKU	Voltage	Batt. Cap.
495-2821-22	18 V DC	5.0 Ah



M18 FUEL™ SAWZALL® Reciprocating Saw-Tool Only

Features:

- Select a saw for superior performance - it delivers the fastest cutting speed in its class.
- Provides increased power with the durability of a corded saw.
- POWERSTATE™ Brushless Motor supplies constant power for faster cuts and reduced heat for extended life.
- REDLINK PLUS™ provides optimized performance and overload protection using total system communication between tool, battery and charger.

Batt. Type: REDLITHIUM™ XC5.0

Stroke Length: 1-1/4 in

Cycle Rate: 0-3,000 SPM

Length: 17.1 in

Control Type: Variable Speed

Handle Type: D-Handle

Includes: Bare Tool Only

Wt.: 6.8 lb



SKU	Voltage
495-2821-20	18 V

M18™ Sawzall® Cordless Reciprocating Saw Kits

Features:

- Counter balance mechanism reduces vibration for more control and less fatigue.
- Lever action QUIK-LOK™ blade clamp provides fast and easy blade changes.
- All metal gearing and gear case provide maximum durability.
- REDLINK™ Intelligence provide ultimate performance and protection against jobsite conditions.

Batt. Type: M18

Stroke Length: 1-1/4 in

Length: 17.1 in

Includes: M18 FUEL™ SAWZALL® Reciprocating Saw; M18™ Redlithium™ XC5.0 Extended Capacity Battery Pack; M18™ and M12™ Multi-Voltage Charger



SKU	Voltage	Batt. Cap.
495-2821-21	18 V	5.0 Ah

DRILLING & FASTENING TOOLS

Crimpers



M18™ FORCE LOGIC™ Cordless Press Tools

Features:

- One-handed use in-line design.
- Delivers press accuracy and reliability.
- M18™ Force Logic™ Press Tool monitors the force output to ensure quality connections.
- Compatible with all M18 batteries and chargers.

Height: 4.5 in

Length: 14.17 in

Width: 3.14 in



SKU	Voltage	Batt. Type
495-2922-22	18V	Lithium Ion

Drills



Unibit® High Speed Steel Fractional Self-Starting

Features:

- Single-flute cutting edge for greater control through steps.
- Hex shank prevents slipping in drill chuck.
- Also available with (TiN) coating for longer life.
- New SpeedPoint tip penetrates faster than previous Unibits and prevents walking.
- Ideal for drilling holes into thin materials such as stainless steel, copper, brass, aluminum, plastic and laminates.

No. of Steps: 10



SKU	Cutting Diam.	Material Thickness
585-10235	1/4 in - 1-3/8 in	1/8 in



29-pc Cobalt M-35 Metal Index Drill Bit Sets

Features:

- Constructed of M-35 5 percent cobalt high speed steel for super abrasive resistance in tough metals.
- Cobalt steel extends cutting edge life and maintains cutting life after resharping.
- Extra hard drill for greater wear.
- 135° split point tip starts on contact, cuts with less force.
- Removable cartridges: easy to carry bits from case to worksite.
- Rubber overmolded case protects kit if dropped.
- Tap & Drill selection chart for convenient reference.
- Automatic indexing for easy bit access and identification.

Finish: Black Oxide

Includes: 29-piece set in metal index case includes drill bit sizes 1/16 in to 1/2 in in 1/64 in increments

Point Angle: 135°

Quantity: 29 Pieces per Set

Wt.: 4.4 lb



SKU	Cutting Diam	Cutting Edge Material
585-3018002	1/16 in - 1/2 in	HSS

Impact Drivers



20V MAX* XR® 3-Speed Impact 1/4 in Drivers

Features:

- Brushless motor delivers 1825 in-lb of torque and 3400 RPM to drive large diameter screws.
- Complete tough fastening applications on the jobsite.
- Pro-level control and precision with variable speed trigger and 3-speed setting.
- Brighten work areas with an integrated 3-LED work light for enhanced visibility in low-light areas.
- Available as bare tool only and as kits.

Drive Size: 1/4 in

Cycle Rate: 4200 IPM

Torque: 1825 in-lb

Length: 5-1/10 in

Voltage: 20.0 V



SKU	Includes
115-DCF845B	(1) DCF845 20V MAX* XR® 1/4 in 3-Speed Impact Driver; (1) Belt Hook
115-DCF845P2	(1) DCF845 20V MAX* XR® 1/4 in 3-Speed Impact Driver; (2) DCB205 20V MAX* 5.0 Ah Batteries; (1) Belt Hook; (1) Charger; (1) Kit Bag



M18 FUEL™ 1/4 in Hex Impact Drivers

Features:

- POWERSTATE™ Brushless Motor delivers faster driving speed, increasing users productivity.
- 4-Mode DRIVE CONTROL™ provides greater control over output speed and power.
- M18™ REDLITHIUM™ Battery Pack delivers more work per charge.
- Single handed bit insertion for faster, easier changing of bits.
- Self-Tapping Screw mode provides faster installation time by reducing the stripping of fasteners.
- Premium rubber overmold withstands corrosive materials and provides increased comfort when in use.
- LED light to illuminate the work area.
- Compatible with all M18™ batteries.
- Available as tool only or kit.

Control Type: Trigger

Voltage: 18 V

Speed: 3900 RPM



SKU	Batt. Type	Length	Includes
495-2953-22	Lithium-Ion	4.49 in	(1) M18 FUEL™ 1/4 in Hex Impact Driver Kit(2953-22); (2) M18™ REDLITHIUM™ XC5.0 Extended Capacity Battery Pack(48-11-1850); (1) M18™ and M12™ Multi-Voltage Charger(48-59-1812); (1) Blow Molding Carrying Case; (1) Belt Clip
495-2953-20	18 V	3.9 in	1/4 in Hex Impact Driver; Belt Clip

Wrenches



20V MAX* XR® High Torque Cordless Impact Wrenches

Features:

- PRECISION WRENCH™ mode is included to help prevent overtightening in forward, and run-off in reverse, for additional user control.
- 4-mode push button switch to easily transitions speeds and adjust LED brightness when needed.
- Bare tool and kits available.

Voltage: 20 V

Batt. Type: Lithium-Ion

Speed: 2200 RPM | **Torque:** 1400 ft-lb

Includes: (1) DCF900 Impact Wrench; (2) DCB205 20V MAX* 5.0 Ah Batteries; (1) DCB1104-BR Charger; (1) Kit Bag



SKU	Drive Size
115-DCF900P2	1/2 in



M18 FUEL™ High Torque 1/2 in Impact Wrenches with Friction Ring

Features:

- REDLINK PLUS™ intelligence prevents damage to the tool and battery due to overloading or overheating.
- Bolt removal mode provides maximum nut-busting torque to break fastener free, then slows to 750 RPM for more control when removing fasteners.
- Premium rubber over-mold withstands corrosive materials and provides increased comfort when in use.
- Features a friction ring design to ensure quick and easy socket changes.
- REDLITHIUM™ batteries deliver more work per charge and more work over the life of the battery.
- LED light to illuminate the work area.
- Available as tool only or kit.

Voltage: 18 V DC | **Batt. Type:** Lithium-Ion

Speed: 2000 RPM | **Cycle Rate:** 2400 IPM

Torque: 1600 ft-lb

Includes: (1) M18 FUEL™ 1/2 in High Torque Impact Wrench with Friction Ring (Tool Only) (2967-20)



SKU	Drive Size	Drive Type
495-2967-20	1/2 in	Square

M18 FUEL™ w/ONE-KEY™ High Torque Impact Wrenches 3/4 in Friction Ring

Features:

- ONE-KEY™ compatible to customize, track and manage tool's performance and location.
- POWERSTATE™ brushless motor delivers up to 1200 ft-lb of fastening torque and 1500 ft-lb of nut-busting torque.
- Features a friction ring with thru-hole design to ensure quick and easy socket changes.
- Easily toggle up to four custom performance profiles that can be saved to the memory of the tool.
- Premium rubber over-mold withstands corrosive materials and provides increased comfort when in use.
- LED light to illuminate the work area.
- Available as tool only or kit.

Voltage: 18 V DC | **Batt. Type:** Lithium Ion

Speed: 1800 RPM | **Torque:** 1600 ft-lb

Includes: (1) M18 FUEL™ w/ONE-KEY™ High Torque Impact Wrench 3/4 in Friction Ring Bare Tool (2864-20); (2) M18™ REDLITHIUM™ XC5.0 Resistant Capacity Battery Pack (48-11-1850R); (1) M18™ and M12™ Multi-Voltage Charger (48-59-1812)



SKU	Drive Size	Drive Type
495-2864-22R	3/4 in	Square



M18™ Impact Wrench Kits with Friction Rings

Features:

- Powerful and compact impact wrench in its class offers one of the best power to size ratio.
- Featuring a Milwaukee® built four-pole frameless motor and optimized impact mechanism.
- This impact driver delivers up to 2,450 RPM, 3,350 IPM and 167 ft-lb of fastening torque for excellent performance.
- REDLINK™ intelligence provides optimized performance and overload protection using total system communication between tool, battery and charger.
- The impact wrench features a friction ring anvil.

Batt. Type: 18 V

Speed: 2000 RPM

Cycle Rate: 2400 IPM

Torque: 1100 ft/lb

Includes: (1) M18 FUEL™ 1/2 in High Torque Impact Wrench w/Friction Ring (2967-20); (2) M18™ REDLITHIUM™ XC5.0 Resistant Battery (48-11-1850R); (1) M18™ and M12™ Multi-Voltage Charger (48-59-1812); (1) Hard Case



SKU	Drive Size
495-2967-22	1/2 in

FINISHING TOOLS

Grinders



4.7 hp Large Angle Grinders

Features:

- Motor provides overload protection.
- Dust Ejection System™.
- Anti-Vibe trigger handle.
- Lightweight design.
- Automatic turn-off brushes.

Watts: 3,450 W

Speed: 6,500 RPM

Control Type: Trigger; No Lock-On

Spindle Thread: 5/8 in to 11

Includes: 9 in Guard; 3-Position Side Handle



SKU	Wheel Dia	Amps
115-DWE4559N	9 in	15 A



High Performance Angle Grinders with E-Clutch®



Features:

- E-Clutch® Activates in less than a tenth of a second when a pinch/stall event is detected.
- Dust Ejection System™ provides durability by ejecting damaging dust and debris particles that enter the tool through the air intake vents.
- Power Loss Reset® prevents accidental restarts following a power disruption when the tool is left in the "on" position.
- Power tool shuts off before overheating with Power-Off® Advanced Overload Protection.

Watts: 1,700 MWO | **Speed:** 9,000 RPM

Control Type: Paddle; No Lock-On

Spindle Thread: 5/8 in to 11 in

Includes: Grinder; Side Handle; Inner and Outer Flange; 6 in Type 27 Guard; 6 in Type 1 Guard

SKU	Wheel Dia	Amps
115-DWE43144N	6 in	13 A

Small Angle Grinders

Features:

- 11 Amp AC/DC 11,000 RPM motor designed for faster material removal and higher overload protection.
- Low profile gear case allows tool to fit into tight spaces.
- Quick-Change™ Wheel Release provides easier and quicker wheel removal without the need for a wrench.



Watts: 1400 W | **Speed:** 11000 RPM

Spindle Thread: 5/8 in - 11

SKU	Wheel Dia	Amps	Control Type	Includes
115-DWE402	4-1/2 in	11 A	Paddle Switch with Lock-Off	2-Position Side Handle; 4-1/2 in One-Touch™ Type 27 Guard
115-DWE402N	4-1/2 in	11 A	Paddle Switch with No Lock-On	One-Touch™ Guard; 2-Position Side Handle; Wrench

20V MAX* FLEXVOLT ADVANTAGE™ Technology Variable Speed Grinders



Features:

- Variable speed functionality allows the user to adjust wheel speed for applications as needed.
- E-CLUTCH® actives in less than a tenth of a second when a pinch/stall is detected, shutting down the motor.
- Brake engages when trigger is released stopping the wheel quickly.

Speed: 9000 RPM

Length: 12-1/4 in

SKU	Voltage
115-DCG416B	20V



FLEXVOLT® 60V MAX* Cordless Grinders with Kickback Brake



Features:

- 13 Amp motor equivalent power.
- No-load speed of 9,000 RPM for applications with 6 inch grinder wheels.
- Kickback brake engages when a pinch, stall, or bind-up event is sensed, it engages with maximum force to quickly stop the wheel, reduce the movement of the grinder, and shut the grinder off.
- Anti-rotation E-CLUTCH® activates in less than a tenth of a second when a pinch/stall is detected, shutting down the motor.
- Options available for bare tool only or kits with battery.

Batt. Type: Lithium Ion | **Speed:** 9,000 RPM

Includes: (1) DCG418; (2) 20V/60V MAX* FLEXVOLT® 9.0 Ah Batteries (DCB609); (1) Charger; (1) Side Handle; (1) 4-1/2 in Type 27 Guard; (1) 6 in Type 27 Guard; (1) Wrench; (2) Flanges; (1) Kit Bag

SKU	Voltage	Spindle Thread
115-DCG418X2	60 V DC	5/8 in-11



M18 FUEL™ 4-1/2 in and 5 in Cordless Angle Grinders



Features:

- POWERSTATE™ brushless motor, purposely built for the M18 FUEL™ 4-1/2 in and 5 in angle grinder, delivers 8,500 RPM to provide the power to complete the toughest grinding and cutting applications.
- REDLINK PLUS™ Intelligence enables communication between batteries and tools, allowing for unmatched levels of performance, protection, and compatibility.
- Tool-free accessory changes with Integrated FIXTEC Nut Technology.
- Electronic clutch for kickback protection.
- Anti-vibration side handle for increased user comfort and safety.
- Overload protection to maximize motor life.
- Compatible with all M18™ batteries.
- Options available for bare tool only or kit with 2 M18™ REDLITHIUM™ HIGH OUTPUT™ XC6.0 battery packs.

Voltage: 18 V DC

Spindle Thread: 5/8 in-11

SKU	Control Type	Handle Type	Includes
495-2880-20	Paddle Switch; No-Lock	Back Body Grip; Anti-Vibration Side Handle	(1) M18 FUEL™ 4-1/2 in/5 in Grinder Paddle Switch, No-Lock (2880-20); (1) Back Flange; (1) Flange Nut; (1) Side Handle; (1) Type 27 Guard; (1) Type 1 Clip-On Guard; (1) Wrench
495-2880-22	Paddle	Straight	(1) M18 FUEL™ 4-1/2 in/5 in Grinder Paddle Switch, No-Lock; (2) M18 REDLITHIUM™ HIGH OUTPUT™ XC6.0 Battery Pack; (1) M18™ & M12™ Rapid Charger; (1) T27 Guard; (1) T1 Clip-On Guard; (1) Side Handle; (1) Wrench; (1) Back Flange; (1) Flange Nut; (1) Contractor Bag



1-1/2 in Die Grinders



Features:

- Motor provides high power and speed for all 1-1/2 in grinding applications.
- AC/DC capacity works off welding machines and generators for increased productivity and versatility.
- Precision 1/4 in collet securely holds all proper accessories (1/8 in reducing sleeve as optional accessory).

Watts: 350 W

Amps: 4.2 A

Speed: 25,000 RPM

Includes: (2) Wrenches; Collet

SKU	Collet Size	Wheel Diam	Control Type
115-DWE4887N	1/4 in	1-1/2 in	Paddle; No-Locking
115-DWE4887	1/4 in	1-1/2 in	Paddle Switch with Lock-On Button

HAMMER DRILLING & DEMOLITION TOOLS

Combination Hammers

SDS Max Combination Hammer Kits

Features:

- 6.1J of impact energy provides the power to drill fast in the hardest of concrete.
- Active Vibration Control™ reduces vibration felt by the user at the handles.
- The lightweight design makes it ideally suited for horizontal serial drilling for #4 - #8 rebar, coring and chipping in any mid to upper wall and ceiling application.

Speed: - 540 RPM

Cycle Rate: - 3150 BPM

Impact: 4.5 ft-lb

Includes: 9.8 ft Cord; Case; Second Handle



SKU	Drive Type	Amps
115-D25481K	SDS Max	10.5 A

Rotary Hammers



XR® Brushless SDS Plus Rotary Hammers



Features:

- Brushless motor for extended runtime and durability.
- Retractable utility hook for convenient hanging.
- Excellent power-to-weight ratio, results in superior productivity.
- Available as tool only or as a kit.

Batt. Type: Lithium-Ion

Drive Size: 1 in

Drive Type: SDS Plus

Speed: - 1100 RPM

Cycle Rate: - 4600 BPM

Impact: 1.5 ft-lb | **Length:** 13 in | **Voltage:** 20 V

SKU	Batt. Cap.	Includes
115-DCH273P2	5.0 Ah	DCH273 Rotary Hammer; (2) DCB205 5.0 Ah Batteries; 360 Degree Side Handle; DCB101 Charger; Depth Rod; Retractable Utility Hook; Case
115-DCH273B	5.0 Ah	DCH273 Rotary Hammer (Tool Only)



M18 FUEL™ SDS Plus Cordless Rotary Hammers



Features:

- POWERSTATE™ brushless motor.
- AUTOSTOP Kickback Control enhances safety by electronically sensing a tool bind-up and shutting the tool off.
- Anti-Vibration System (AVS) minimizes vibration for maximum comfort.
- REDLINK PLUS™ Intelligence integrates full-circle communication between tool, battery and charger to protect from overloading, overheating, and over-discharging.
- Rotary Hammer, Hammer only, Rotary only modes.
- Bare tool and kits available.

Batt. Type: Lithium-Ion | **Drive Size:** 1 in

Speed: - 1330 RPM | **Cycle Rate:** - 1330 BPM

Impact: 2 ft-lb | **Length:** 11.5 in | **Batt. Cap.:** 5.0 Ah

Voltage: 18 V

SKU	Includes
495-2912-20	(1) M18 FUEL™ 1 in SDS Plus Rotary Hammer (2912-20)
495-2912-22DE	(1) M18 FUEL™ 1 in SDS Plus Rotary Hammer (2912-20); (2) M18™ REDLITHIUM™ HIGH OUTPUT™ XC 6.0 Battery Pack (48-11-1865); (1) M18™ and M12™ Rapid Charger (48-59-1808); (1) M18 FUEL™ HAMMERVAC™ 1 in Dedicated Dust Extractor (2912-DE)
495-2912-22	(1) M18 FUEL™ 1 in SDS Plus Rotary Hammer (2912-20); (2) M18™ REDLITHIUM™ HIGH OUTPUT™ XC 6.0 Battery Pack (48-11-1865); (1) M18™ and M12™ Rapid Charger (48-59-1808)

HEATING TOOLS

Heat Guns & Torches



Master Heat Guns®

Features:

- Professional quality, heavy-duty, multiple use heat gun.
- Sturdy die cast housing and powerful high-speed universal motor.
- Adjustable non-slip stand.
- Use to bend plastics, cure adhesives, dry parts, heat parts, shrink tubing and packaging, strip paint and more.
- Three position OFF-COLD-HOT rocker switch.
- Optional momentary contact switch.
- Available as a tool or a kit.

Velocity: 3,400 ft/min

Frequency: 60 Hz

Amps: 14.5 A

Watts: 1,740 W

Outlet Size: 1-1/2 in OD

Cord Length: 6 ft; 3-Wire Grounded

Control Type: Rocker Switch - Hot/Cool/Off

Wt.: 3.7 lb



SKU	Operating Temp.	Flow
467-HG-501D	1,200° F	27 ft ³ /min

MULTI-PURPOSE POWER TOOLS

Combo Kits Cordless



20V MAX* Lithium Ion Grinder Tool Kits

Features:

- Provides high-power for cutting and grinding applications.
- Quick-Change™ Wheel Release allows for tool-free wheel changes without the need for a wrench.
- Tool-free guard allows for quick and easy guard adjustments/positioning.
- 2-finger trigger switch (w/ lock-off button) allows for convenient activation and easier gripping.
- 2-position side handle offers greater control, comfort and versatility.

Batt. Cap.: 5 Ah

Speed: 7,000 RPM

Includes: DCG412 Grinder; (2) DCB205 20V MAX* XR Premium Li-Ion Battery; Fast Charger; Spanner Wrench; 5 inch Type 27 Grinding Guard; 2-Position Side Handle; Contractor Bag



SKU	Voltage	Batt. Type
115-DCG412P2	20 V	Lithium-Ion



FLEXVOLT® Cordless Hammerdrill & Impact Driver Combo Kits

Features:

- The 1/2 in hammerdrill 3-speed, high performance, all-metal transmission optimizes tool-to-task for fast application speeds and improved run-time, including 0-38250 BPM for fast drilling in masonry materials, and the 3-mode LED is up to 20X brighter than previous model.
- The 1/4 in impact driver provides max torque at fast RPM speed and IPM.
- Both are compact in size and lightweight to fit in tight areas.

Torque: 1824 in-lb

Includes: DCD999B 20V MAX* 1/2 in Brushless Cordless Hammer Drill/Driver With FLEXVOLT® Advantage™; DCF887 20V MAX* 1/4 in XR® Brushless Cordless Impact Driver; DCB205 20V MAX* Lithium Ion 5.0 Ah battery; DCB118 8 Amp Fast Charger; (2) Belt Hooks; Kit Bag



SKU	Voltage
115-DCK2100P2	20V



M18 FUEL™ 2-Tool Combo Kits

Features:

- Includes Milwaukee® cordless hammer drill/driver and cordless impact driver.
- Each tool features dynamic Powerstate™ brushless motor.
- 4-mode Drive Control™ provides greater control over output speed and power.
- Includes durable carrying case.

Batt. Cap.: 5 Ah

Speed: 2100/3900 RPM

Includes: (1) M18 FUEL™ 1/2 in Hammer Drill/Driver; (1) M18 FUEL™ 1/4 in Hex Impact Driver; (2) M18™ REDLITHIUM™ XC5.0 Extended Capacity Battery Pack; (1) M18™ & M12™ Multi-Voltage Charger; (1) Side Handle; (2) Belt Clip; (1) Blow Molding Carrying Case



SKU	Voltage	Batt. Type
495-3697-22	18 V	Lithium-Ion



M18™ 1/2 in Brushless Hammer Drill/Driver Kits

Features:

- Compact design provides excellent balance and control, ideal for overhead applications or work in tight spaces.
- Milwaukee brushless motor optimized for efficiency, this motor delivers more run-time and longer life than a brushed motor.
- All-metal gear case and 1/2 inch metal chuck, provide maximum durability.

Batt. Cap.: 3.0 Ah

Torque: 725 in-lb

Speed: 1800 RPM

Includes: (1) M18™ 1/2 in Brushless Hammer Drill (Tool Only) (2902-20); (2) M18™ REDLITHIUM™ XC 4.0 Extended Capacity Battery Pack(48-11-1840); (1) M18™ and M12™ Multi-Voltage Charger(48-59-1812); (1) Carrying Case (1) Side Handle; (1) Belt Clip



SKU	Voltage	Batt. Type
495-2904-22	18 V	Lithium-Ion

M18™ Cordless Combo Kits

Features:

- Delivers maximum power and application speed for greater efficiency on the job.
- Superior control and versatility.

Batt. Cap.: 1.5 Ah

Torque: Drill 500 in-lb; Impact Driver 1,500 in-lb

Speed: 400 RPM; 1,800 RPM

Includes: (1) M18™ Compact 1/2" Drill Driver (2606-20); (1) M18™ 1/4" Hex Impact Driver (2656-20); (2) M18™ Compact REDLITHIUM™ CP1.5 Ah Battery Packs (48-11-1815); (1) M18™ and M12™ Multi-Voltage Charger (48-59-1812); (1) Belt Clip; (1) Contractor Bag



SKU	Voltage	Batt. Type
495-2691-22	18 V DC	M18™ REDLITHIUM™ Compact

CLOTHING PROTECTION

Coveralls & Overalls



Tyvek® 400 Coveralls

Features:

- Composed of Tyvek® 400 flash-spun, high-density polyethylene which creates a unique, nonwoven material.
- Offers inherent barrier against particles down to 1.0 micron in size.
- Protection built into the fabric itself, no films or laminates to abrade or wear away.
- Comfort fit design enables a greater range of movement while stretching and bending with reinforcement in high stress areas.
- Available in many different styles.



SKU	Size Group	Style
251-TY120S-L	Large	Serged Seams; Collar; Elastic Waist; Zipper Front; Open Wrists and Ankles; Storm Flap
251-TY120S-XL	X-Large	Serged Seams; Collar; Elastic Waist; Zipper Front; Open Wrists and Ankles; Storm Flap
251-TY120S-2XL	2X-Large	Serged Seams; Collar; Elastic Waist; Zipper Front; Open Wrists and Ankles; Storm Flap
251-TY120S-3XL	3X-Large	Serged Seams; Collar; Elastic Waist; Zipper Front; Open Wrists and Ankles; Storm Flap
251-TY122S-XL	X-Large	Serged Seams; Attached Hood (Respirator Fit); Attached Skid-Resistant Boot; Elastic Waist, Wrists, Ankles; Front Zipper; Storm Flap
251-TY122S-2XL	2X-Large	Serged Seams; Attached Hood (Respirator Fit); Attached Skid-Resistant Boot; Elastic Waist, Wrists, Ankles; Front Zipper; Storm Flap
251-TY127S-XL	X-Large	Serged Seams; Attached Hood (Respirator Fit); Elastic Waist, Wrists, Ankles; Front Zipper; Storm Flap
251-TY127S-2XL	2X-Large	Serged Seams; Attached Hood (Respirator Fit); Elastic Waist, Wrists, Ankles; Front Zipper; Storm Flap

Rainwear



3-Pc Rainsuits

Features:

- Jacket is vented back for breathability, duo-layer front closer to prevent wet, two front patch pockets for storage, and a corduroy collar for comfort.
- Removable hood with drawstring.
- Adjustable suspenders for overalls with triangular buckles for perfect fit and single snap fly.

Material: PVC Over Polyester



SKU	Size Group
101-9000-M	Medium
101-9000-L	Large
101-9000-XL	X-Large
101-9000-2XL	2X-Large
101-9000-3XL	3X-Large
101-9000-4XL	4X-Large

An ideal balance of protection, durability and comfort



DuPont™ Tyvek® 400 garments are composed of a comfortable and durable nonwoven material that offers an inherent barrier against particles down to 1.0 micron in size, aerosols and light liquid splash. Protection is built into the fabric itself; there are no films or laminates to abrade or wear away. The breathable material will help keep workers comfortable without compromising safety.



DuPont Personal Protection

 DuPont™ Tyvek®

 DuPont Personal Protection

Contact us today for more information.

© 2024 DuPont. All rights reserved. DuPont™, the DuPont Oval Logo, and all trademarks and service marks denoted with ™, SM or ® are owned by affiliates of DuPont de Nemours, Inc. unless otherwise noted.

EAR PROTECTION

Earplug Parts & Accessories

MOLDEX

PlugStation® Earplug Dispensers

Features:

- Compliance — High visibility to increase awareness for your hearing conservation program.
- Convenience — Hang a PlugStation® anywhere plugs are needed.
- Workers take one pair at a time so there are no wasteful grabbing of multiple pairs.
- When PlugStation® is empty, simply dispose of it and hang a new one.
- Uncorded earplugs are available in two sizes - 250 pairs and 500 pairs.
- Available for CAMO PLUGS® Uncorded, Glide® Packaged Corded, Goin'Green® Uncorded, Mellows® Uncorded, Meteors® Small/Uncorded, Pura-Fit® Corded/Uncorded/Packaged Corded, SparkPlug® Corded/Uncorded/Packaged, and SparkPlug® Metal Detectable/Corded/Packaged styles.
- Can also be used with EcoStation™/PlugStation® Magnetic Bracket Assembly (6868 sold separately).

Includes: Dispensers with Uncorded Earplugs; Mounting Brackets

Quantity: (4) Dispensers; (4) Mounting Brackets; 500 Pairs/Dispenser



SKU	Used With
507-6645	SparkPlugs® Earplugs; Uncorded

Earplugs

3M

3M™ E-A-R™ Classic™ Earplugs 310-1001

Features:

- Flame-retardant.
- Moisture resistant.
- Shape prevents shifting and keeps effectiveness of noise seal constant.
- Slow recovery PVC foam provides comfort with low pressure.



SKU	Noise Reduction	Body Material
247-310-1001	29 dB	Polymer Foam

3M

3M™ E-A-R™ Push-Ins™ Earplugs 318-1001

Features:

- No roll down earplugs.
- The patented E-A-R™ form foam tip is shaped and sized to mold comfortably to fit virtually every sized canal.
- The the unique foam actually softens and becomes more pliable with body temperature, the seal and comfort increases the longer the plugs are worn.



SKU	Noise Reduction	Body Material
247-318-1001	28 dB	Polyurethane

3M™ E-A-R™ UltraFit™ Earplugs 340-4004

Features:

- Conforms to oval shape of ear.
- No rolling or touching plug portion during insertion.
- Proprietary, premolded, triple-flange earplug design inserts easily and provides a comfortable fit for a reusable earplug.



SKU	Noise Reduction	Body Material
247-340-4004	25 dB	Elastomeric Polymer

3M™ Foam Earplugs 1100

Features:

- Smooth, dirt resistant surface for hygiene.
- Tapered shape to fit the ear canal comfortably.
- Hypo-allergenic material.
- Comfortable for a wide range of ear sizes.



SKU	Noise Reduction	Body Material
142-1100	29 dB	Foam

SAFETY & SECURITY

Honeywell
HOWARD
LEIGHT
AUTHORIZED
DISTRIBUTOR

Laser Lite® Disposable Earplugs

Features:

- Vibrant colors make protection visible.
- Self-adjusting polyurethane foam expands to fit virtually every wearer.
- Contoured T-shape for easy insertion and wear.
- Smooth, soil-resistant closed cell-foam skin prevents dirt build-up.

Noise Reduction: 23 dB

Body Material: Polyurethane Foam



SKU	Type
154-LL-1	Uncorded
154-LL-30	Corded

MAXIMUM Disposable Earplugs

Features:

- Contoured design easier to insert, resists tendency to back out of ear canal.
- Polyurethane foam enhances comfort, especially for long-term wear.
- Smooth, soil-resistant closed cell-foam skin prevents dirt build-up.
- Bell shape delivers maximum in-ear comfort.
- Also available in small size.

Noise Reduction: 33 dB

Body Material: Polyurethane Foam



SKU	Type
154-MAX-1	Uncorded
154-MAX-30	Corded

MAXIMUM LITE Disposable Earplugs

Features:

- Low pressure polyurethane foam expands gently for comfortable long-term wear.
- Contoured T-shape for easy insertion and wear.
- Smooth, soil-resistant closed cell-foam skin prevents dirt build-up.

Noise Reduction: 30 dB

Body Material: Foam



SKU	Type
154-LPF-1	Uncorded
154-LPF-30	Corded

MOLDEX

Pura-Fit® Foam Earplugs

Features:

- Long length for easy fitting and removal.
- Bright color for easy compliance checks.
- Tapered design to fit the ear canal.
- Non-irritating, smooth surface for added comfort.



SKU	Noise Reduction	Body Material
507-6800	33 dB	Foam

Rockets® Reusable Earplugs

Features:

- Easy grip handle.
- Air bubble in the tip provides cushioned comfort.
- Easy insertion in any size ear canal.
- Pocket-Pak® carrying case for plug storage, slips easily into pocket.
- Washable and reusable.



SKU	Noise Reduction	Body Material
507-6405	27 dB	TPE

SparkPlugs® Foam Earplugs

Features:

- Extra soft foam and tapered design fit snugly and comfortable in the ear.
- Bright, fun colors provide easy compliance checks.



SKU	Noise Reduction
507-6604	33 dB

EYE PROTECTION

Safety Glasses



KLEENGUARD™

V30 Nemesis™ Safety Glasses



Features:

- Safety glasses feature a sporty, flexible, lightweight design.
- Wraparound frame has a base curve of 8 that extends the range of peripheral protection, as well as soft touch temples for comfort.
- Patented FLEX-DRY* nose piece designed to be extremely flexible, to channel sweat away from the eyes, and to help prevent slippage down the nose for long-term comfort.
- Polycarbonate lenses provide 99.9% UVA/UVB/UVC protection.
- Includes neck cord for securing them, so that the glasses are ready to protect at a moment's notice.

Lens Material: Polycarbonate

SKU	Color	Lens Tint	Lens Coating/ Shade
412-19644	Camouflage	Bronze	Uncoated
412-14481	Black	Blue Mirror	Mirror
412-22475	Black	Smoke	Anti-Fog
412-25659	Black	Amber	Uncoated
412-25671	Black	IRUV Shade 5	Uncoated; IRUV Shade 5
412-25676	Black	Clear	Uncoated
412-25679	Black	Clear	Anti-Fog
412-25685	Black	Indoor/Outdoor	Uncoated
412-25688	Black	Smoke Mirror	Mirror

V40 Hellraiser™ Safety Glasses



Features:

- Comfortable eye protection helps drive compliance, so these feature flex point temples for comfort and stability.
- Use them for men and women in a variety of work environments.
- Features single-lens wraparound protection that's designed for use at work or home.
- High-performance, durable polycarbonate lenses, which provide 99.9% UV protection (UVA/UVB/UVC).
- Available in a variety of styles.

Lens Tint: Smoke

Lens Material: Polycarbonate

Lens Coating/Shade: Uncoated

Resistance: 99.9% UV Protection (UVA/UVB/UVC)

SKU
412-25714



KLEENGUARD™

V50 OTG Safety Glasses



Features:

- Made with a nylon frame for strength, durability, and comfort and fits over most prescription glasses.
- See-through side shields provide side impact protection without blocking peripheral vision.
- Provides 99.9% UV protection (UVA/UVB/UVC).
- Available in a variety of styles.

Lens Tint: Clear

Lens Material: Polycarbonate

Lens Coating/Shade: Anti-Fog

Resistance: 99.9% UV Protection (UVA/UVB/UVC); Fog

SKU
412-20746

V60 Nemesis™ Rx Readers Prescription Safety Glasses



Features:

- Features a sporty, flexible, lightweight design.
- Wraparound frame has a base curve of 8 that extends the range of peripheral protection, as well as soft touch temples for comfort.
- Corrective lenses are hard coated for scratch resistance and longer life.
- Patented FLEX-DRY* nose piece designed to be extremely flexible, to channel sweat away from the eyes, and to help prevent slippage down the nose for long-term comfort.
- Polycarbonate lenses provide 99.9% UVA/UVB/UVC protection.
- Includes neck cord for securing them, so that the glasses are ready to protect at a moment's notice.

Lens Material: Polycarbonate

Lens Coating/Shade: Hard Coated

SKU	Lens Tint	Diopter Strength
412-22516	Smoke	+1.5
412-22518	Smoke	+2.0
412-28621	Clear	+1.5
412-28624	Clear	+2.0



Smith & Wesson®

Elite® Safety Glasses



Features:

- Designed to be both stylish and comfortable.
- Dual lens offer wrap-around protection, and the wide temple provides structural integrity and stability.
- Lightweight and feature a retro design that provides a stylish fashion statement.
- Provides 99.9% UV protection (UVA/UVB/UVC).
- Includes a Smith & Wesson® branded microfiber carry bag that doubles as a cleaning cloth.
- Available in a variety of styles.

Lens Material: Polycarbonate

Lens Coating/Shade: Uncoated

SKU

412-21303

Safety Goggles



KLEENGUARD™

V90 Shields with Monogoggle™ XTR OTG Goggles



Features:

- The shield features the Monogoggle™ XTR OTG goggles, so there is no need to wear primary eye protection, like with other face shields.
- It's like having two products in one, since the face shield mask detaches from the splash goggles.
- Provides eye and full face protection from liquids and particles without the hassle of primary eye protection underneath a face shield mask.
- The shield has a D3 rating for droplet and splash protection.
- The goggles portion has a soft, pliable frame that conforms to the face for comfort, a cylindrical lens for increased visibility, indirect ventilation, and fit over most prescription glasses.
- The face shield mask is curved to conform to the shape of face for added protection and includes an adjustable strap.
- Polycarbonate lenses provide 99.9% UVA/UVB/UVC protection.
- Replacement goggle lenses available (30707, 30708).
- Available in a variety styles.

Lens Coating/Shade: Anti-Fog

Lens Material: Polycarbonate Face Shield and Goggles

Frame Material: PVC Frame and Nose Piece

Ventilation: Goggles with Indirect Ventilation

Strap Material: Polyester/Rubber Weave

SKU

412-18629

Frame Color

Blue

Lens Tint

Clear

FALL PROTECTION

Lanyards

AUTHORIZED DISTRIBUTOR

Turbolite™ + Scorpion Fall Limiters

Features:

- Available in 8 ft and 9 ft lengths.
- Combinations available for unit and lanyard ends, including steel rebar hook for concrete form work.
- Enhanced graphics, icons, and colors on UV-resistant scratch-resistant labeling.
- Designs aligned with Honeywell harnesses for mix and match protection.
- Abrasion-resistant webbing, integral swivel reduces lifeline twisting.

Load Capacity: 420 lb

No. of Legs: 1



SKU

493-MTL-OHS1-01/9FT

FIRE, GAS & WATER PROTECTION

Detectors

THE POWER OF CONNECTED

Clip Single-Gas Detectors

Features:

- One button operation.
- Operates up to two years use without calibration, sensor replacement, or battery recharging/replacement.
- Wide angle flash which alerts simultaneously with audible and vibrating alarm.
- Automatic logging of the 35 most recent gas events.
- Compatible with IntelliDoX, Fleet Manager II Software.

Sound Level: 95 dBA

Display Type: LCD

Power Source: Lithium Battery

Sensor Type: Surecell

Temp. Range: -40° F - 122° F

Run Time: 2 years

Includes: Specified Sensor; Stainless Steel Alligator Clip; Concussion-Proof Housing; Test Cap; Instructions



SKU

126-BWC2-H

126-BWC2-M

Gas Type

Hydrogen Sulfide

Carbon Monoxide

Fire Extinguishers



ProLine™ Multi-Purpose Dry Chemical Fire Extinguishers

Features:

- Rechargeable.
- Designed to meet most commercial and industrial specifications.
- Tough impact resistant metal valve, handle and lever.
- Powder coated cylinder for corrosion protection.
- Easy-to-read gauge.

Extinguishing Material: Monoammonium Phosphate

Fire Type: Class A, B and C Fires

Mounting Position: Upright

Operating Temp.: -40° F - 120° F



SKU	Capacity Wt.	Operating Distance
408-21032142	5.5 lb	12 ft - 18 ft
408-21032149	10 lb	20 ft

FIRST AID SAFETY

Eye Wash



Eye and Skin Flush Emergency Station/ Replacement Twin Bottles

Features:

- Eye flush kit with 2 bottles and wall mount station.
- Helps to clear eyes of foreign material such as dust, pollen, and chemicals and to relieve itching and burning.
- Bottles of sterile isotonic buffered solution for washing, flushing, and irrigating the eyes and skin.

Capacity Vol.: 16 oz

Hose Material: Plastic



SKU
579-24-102

Honeywell

Eyewash Wall Stations

Features:

- Mounts to wall with provided screws.
- Overhang protects bottles from dust and debris.
- Twist off, tamper resistant tabs prevent leaking and are easily removed in an emergency.
- Holds factory-sealed, sterile, preserved, buffered saline solution bottles firmly in place for easy access in an emergency.
- Simple, highly visible, operating instructions are provided on each unit.
- Durable, easy to clean plastic.



SKU	Capacity Vol.
714-32-000462-0000-H5	32 oz

Personal Eye Wash Solutions

Features:

- Portable and readily available for use.
- Designed for flushing nuisance particles such as pollen, dust, sawdust, smoke as well as for immediate treatment.
- Bottles contain a buffered, saline solution that is sterile and superior to tap water for emergency eye care.
- Blow-fill-seal bottles with extended-flow nozzles are tamper resistant, yet easily removed in an emergency.
- Deliver drops or an irrigating stream of solution, depending on the squeeze pressure applied to the bottle.



SKU	Capacity Vol.
203-32-000455-0000-H5	32 oz

Personal Eyewash Products

Features:

- Eyesaline® solution delivery.
- Easy open top.
- User-controlled volume delivery.
- Quality assured manufacturing.



SKU	Capacity Vol.
203-32-000452-0000	4 oz

First Aid Kits



10 Person First Aid Kits

Features:

- 10 person first aid kit.
- ANSI Standard compliant.
- Durable plastic case.
- Water resistant gasket.

Length: 5.5 in

Width: 8.75 in

Height: 3 in



SKU	Case Material
101-10-9-FAKP	Plastic

25 Person First Aid Kits

Features:

- 25 Person First Aid Kits, ANSI.
- Come with either a durable plastic or metal case.

Length: 10 in

Width: 7 in

Height: 3 in



SKU	Case Material
101-25-3-FAKP	Plastic

Insect Repellents & Sunscreens



Sunscreen Lotions

Features:

- A broad spectrum, SPF 30 sunscreen lotion in a convenient single-dose pouch.
- The non-greasy formula offers UVA/UVB protection and is PABA-free and oil-free.
- Contains added aloe vera gel and vitamin E.
- Passes lineman's glove test.
- Sweat and water resistant for up to 80 minutes.



SKU	Capacity Vol.
253-92101	1/4 oz

HEAD/FACE PROTECTION

Faceshields & Visors



Visors

Features:

- Clear or shaded available.
- Durable and high-performance.

Length: 15-1/2 in

Height: 9 in

Thickness: 0.040 in

Lens Material: PETG



SKU	Lens Coating/ Shade	Binding	Style	Color
101-3440-U-CL	Clear	Unbound	Unbound Visor	Clear
101-3442-B-DG	Dark Green	Aluminum Bound	Bound Visor	Dark Green



High Performance[®] Faceshield Windows

Features:

- Injection molded from propionate.
- Heat and scratch resistant.
- Fits easily and comfortably over required protective spectacles or respirators.

Lens Material: Propionate

Thickness: 0.06 in



SKU	Lens Coating/ Shade	Used With	Style	Color	Height
280-4178CL	Clear	F-400, F-500, FH-66, FM-70, FM-71 Series	Wide View	Clear	8 in
280-4178IRUV5	Shade 5	F-400;F-500;FH-66;FM-70;FM-71 Series;400500667071	Wide View	Green	8 in
280-4199CL	Clear	F-400, F-500 & FH-66 Series;40050066	Extended View	Clear	9 in

THE FUTURE OF ERGONOMIC SAFETY

The Next Generation of Premium Full Body Harnesses



The Miller H700 full-body harness helps to ensure workers stay compliant, protected, comfortable and productive when working at height thanks to scientifically-based technological advances that focus on user comfort, safety and intuitiveness. The product is available in multiple versions enabling user protection in virtually any work environment.



Honeywell

Hard Hat & Cap Parts & Accessories

Honeywell
AUTHORIZED
DISTRIBUTOR

High Performance® Hard Hat Faceshield Headgears



Features:

- Made from Noryl®, the same material used in our welding helmets.
- Exceptionally lightweight and comfortable.
- Allows space for air circulation to prevent fogging.
- Accommodates a full selection of standard size windows.

Material: Noryl®

SKU	Used With	Suspension
280-F400	4178CL; 4178DGN; 4178IRUV3; 4178IRUV5; 4199CL; 4199DGN; 4199IRUV3; 4199IRUV5; 4178IRUV8; 4178TVGY; S178; 4199GDTVGY; S199	Ratchet

MSA

The Safety Company

Fas-Trac® III Replacement Suspensions



Features:

- Ratchet suspension and flush rear lug attachments eliminate pressure points for additional wearer comfort.
- Three levels of nape strap adjustment ensure a customized fit.
- Graspable ratchet with ultra-smooth rotation and steadfast hold.

Material: Plastic/Nylon

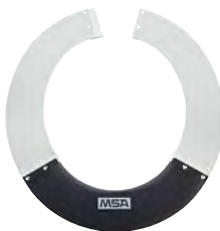
SKU	Used With	Suspension	Color
454-10148708	V-Gard®; V-Gard 500; V-Gard GREEN; SmoothDome®	4-Point Ratchet	Black
454-10153385	MSA Skullgard® Helmets	4-Point Ratchet	Gray

Sun Shields

Features:

- Front portion is Lexan tinted.
- Protects wearer's ears and neck from sun rays.
- Extends brim all the way around.

Material: Polyurethane



SKU	Used With	Suspension
454-697410	V-Gard	Attaches to Brim

Hard Hats & Caps

Honeywell
AUTHORIZED
DISTRIBUTOR

SuperEight® E1 Hard Hats



Features:

- Dissipates force on impact by reducing it to smaller increments and spreading it over a greater area.
- The exclusive smooth crown design contains a technically advanced suspension with eight load bearing points to stabilize and balance the hat or cap during everyday wear.

Material: Thermoplastic

Size Group: One Size Fits Most

SKU	Suspension
280-E1RW01A000	8-Point Ratchet

SuperEight® E2 Series Hard Caps



Features:

- Energy control system dissipates force by reducing it into smaller increments and spreading it over a wide area.
- The exclusive smooth crown design contains a technically advanced suspension with eight load bearing points to stabilize and balance the hat or cap during everyday wear.

Material: Thermoplastic

Size Group: Standard

SKU	Suspension
280-E2RW01A000	8-Point Ratchet

MSA

The Safety Company

Skullgard® Protective Caps and Hats



Features:

- Strong, protective hats offer outstanding protection in hot, dangerous industries.
- Tested to radiant heat loads producing temperatures up to, but not exceeding, 350F.
- Smooth crown allows easy use of MSA welding equipment.
- Heavy duty construction produces a sturdy, reliable product for long-lasting use.

Material: Phenolic

Type: Non-Slotted

Size Group: Standard; 6-1/2 to 8

Suspension: Fas-Trac® Ratchet

SKU
454-475395
454-475407



V-Gard® Protective Hats

Features:

- Convenient caps and hats provide comfortable, lightweight protection.
- Polyethylene shell provides superior impact protection.
- Available with Fas-Trac® III or Staz-On® suspension.

Adjusting Method: Ratchet

Material: Polyethylene

Size Group: Standard; 6-1/2 to 8



SKU
454-475369

V-Gard® Slotted Hard Hat Caps

Features:

- Comfortable, durable protection.
- Polyethylene shell provides superior impact protection.
- Iconic V design has been a mainstay for many years on even the toughest worksites.

Adjusting Method: Ratchet

Material: Polyethylene

Size Group: 6-1/2 in to 8 in; Standard



SKU	Suspension
454-475358	Fas-Trac® III

Welding Helmet Parts & Accessories



Cover Lens

Features:

- Convenient protective cover lens is resistant to abrasion, pitting, spatter, chemicals and solvents.
- Optically correct and balanced.
- Provides superior welding lens protection.

Window Size: 2 in x 4.25 in

Lens Coating/Shade: Clear



SKU	Material
901-SP-1	70% CR-39 Plastic
901-SP-2	100% CR-39 Plastic



Glass Filter Plates

Features:

- Best Welds filter plates offer ultimate protection against ultraviolet and infrared rays present in the welding environment.
- Precision ground and edged to allow a safe and proper fit.
- Precisely shaded and optically correct.

Window Size: 2 x 4-1/4 in

Material: Hardened Glass



SKU	Lens Coating/ Shade
901-932-105-10	10

Safety Plate

Features:

- Safety plate provides strong impact resistance for added safety.
- Optically correct and balanced.
- Light-weight.

Material: Polycarbonate

Lens Coating/Shade: Clear

Style: Rectangular



SKU	Window Size
901-932-440	2 in x 4-1/4 in
901-932-442	4-1/2 in x 5-1/4 in



Speedy-Loop™ Mounting Systems

Features:

- Easy on/off system for mounting welding helmets onto protective caps.
- Fully adjustable.

Material: Plastic

Size: Adjustable



SKU	Used With
280-5000-H5	Fibre-Metal Protective Caps



THE V-Gard C1™ HARD HAT

A higher degree of heat stress protection. The patent-pending ReflectIR™ Thermal Barrier works to block the energy of the sun, keeping the inside of the hard hat up to 20°F (11°C) cooler, reducing the risk of heat stress. **Find where to buy at www.msasafety.com/vgardc1.**

MSA
The Safety Company

HEAT STRESS PROTECTION

Activity Drinks



G Series O2 Perform® Thirst Quencher Instant Powders

Features:

- Hydrates with electrolytes that help them replace the carbs, electrolytes and fluids they lose when they sweat.
- Carbohydrates help stimulate rapid fluid absorption and fuel the active body.

Package Yield: 2.5 gal



SKU	Flavor
308-03944	Fruit Punch; Lemon-Lime; Orange; Frost Riptide Rush
308-03969	Lemon-Lime
308-03970	Orange
308-33673	Frost Riptide Rush
308-33677	Glacier Freeze
308-33691	Fruit Punch

G Zero Powder Sticks

Features:

- Gatorade® G Zero in convenient single serve sticks.
- Sugar-free G Zero packs are designed for those on the go, simply add to a 20 oz bottle of water.
- Gatorade® G Zero is an ideal electrolyte solution for those interested in maintaining a ketosis state.

Flavor: Glacier Freeze



SKU	Package Yield
308-04457	16.9 oz

Powder Sticks

Features:

- Powdered mix contains the same electrolyte formula found in the original Gatorade.
- The refreshing choice when you need to replace electrolytes lost from sweat while performing rigorous physical activity.
- Take these convenient packets with you anywhere

Package Yield: 16.9 oz



SKU	Flavor
308-04702	Fruit Punch
308-04701	Orange
308-04700	Lemon Lime



Qwik Stik® ZERO Sugar

Features:

- Great-tasting sugar-free electrolyte replacement.
- Ideal for diabetics and carb-conscious consumers.

Package Yield: 20 oz



SKU	Flavor
690-159060099	ZERO Sugar Strawberry Lemonade
690-159060100	ZERO Sugar Orange
690-159060101	ZERO Sugar Mixed Berry
690-159060102	ZERO Sugar Fruit Punch
690-159060103	ZERO Sugar Lemonade
690-159060106	ZERO Sugar Lemon-Lime
690-159060107	ZERO Sugar Grape
690-159060119	ZERO Sugar Fruit Punch; ZERO Sugar Mixed Berry; ZERO Sugar Orange; ZERO Sugar Strawberry Lemonade

Squeeze® Freezer Pops

Features:

- Great way to cool down the body during hot or fatiguing work situations.
- Just freeze and serve to administer a tasty way to provide electrolytes to any work crew.
- Formulated to be absorbed significantly faster than water, allowing the body to replenish electrolytes and minerals for proper hydration.

Flavor: Cherry; Grape; Lemon-Lime; Mixed Berry; Orange



SKU	Package Yield
690-159200201	3 oz

Sweat Bands



Headgear Sweatbands

Features:

- Individually packaged.
- Hook & loop closure allows the fit onto most major brand headgear.
- Sweat absorbent air cushioned layer lined with 100% fleece cotton.

Used With: Suspension Headgear

Strap Type: Hook and Loop



SKU	Material
101-SB320V	Fleece Cotton

LOCKING DEVICES

Lockouts & Hasps

**Master
Lock**

Portable Lockout Kits

Features:

- Kit includes padlocks and electrical focused high-use products.
- Supplies store securely in a rugged toolbox to help keep important lockout devices and padlocks together.
- For added individual worker convenience, padlocks are supplied keyed alike.

Width: 25/32 in Body -

Shackle Length: 1-1/4 in

No. of Padlocks: 4

Includes: (1) S1017 Durable Lockout Toolbox; (3) 410KARED Zenex™ Padlocks; (1) 7C5RED Circuit Breaker Padlock; (1) 427 Red Labeled Snap-On Lockout Hasp; (3) 493B Circuit Breaker Lockouts; (2) 491B Circuit Breaker Lockouts; (1) 496B Wall Switch Cover; (1) 497A Do Not Operate Laminated Safety Tags (12-pack)

Depicted Text: Danger Do Not Operate; Danger Locked Out Do Not Remove



SKU
470-1457E410KA

Zenex™ Thermoplastic Safety Lockout Padlocks

Features:

- Designed exclusively for lockout tagout applications.
- Durable, lightweight, non-conductive Thermoplastic lock body.
- Customize on-site with permanent, write-on labels.
- Compliance with "One Employee, One Lock, One Key" directive.
- High security, reserved-for-safety cylinder.
- Key retaining, ensures that padlock is not left unlocked.
- 6-pin tumbler for Keyed Alike (KA), Keyed Different (KD), and Master Keyed (MK) styles.
- Choose from 1-3/4 inch (406 and 410) or 3 inch (411) body heights.
- Dielectric (406) options available.



SKU	Type
470-410RED	6-Pin Tumbler Cylinder

RESPIRATORY PROTECTION

Cartridge Respirator Parts & Accessories

3M

3M™ Particulate Filter

Features:

- Lightweight and easy to breathe through.
- Bayonet compatibility allows use with many 3M™ half and full facepieces and certain 3M™ Scott™ full facepieces.
- Assortment of filters available for a wide range of applications.

Filtration Grade: P100



SKU	Resistance
142-2091	Oil and Non-Oil Based Particles
142-2097	Nuisance Level Organic Vapor

3M™ Organic Vapor Cartridge 6001

Features:

- Swept-back design allows an enhanced field of view and comfort.
- Bayonet compatibility allows use with many 3M™ Half and Full Facepiece Respirators.
- Wide range of applications reduces inventory needs.
- Simple installation and usage requirements reduces training requirements.



SKU	For Model
142-6001	3M™ Half/Full Facepieces 6000, 6500, 7000, 7500, 7800S, and FF-400 Series with bayonet filter holders

3M™ Organic Vapor Cartridge/Filter

Features:

- Unique design for enhanced comfort and visibility.
- Particulate filter is permanently attached to cartridge for easy, one-step assembly.

Filtration Grade: P100



SKU	Resistance
142-60921	Organic Vapor; Asbestos; Mold; Silica
142-60923	Acid Gases; Organic Vapors



AUTHORIZED DISTRIBUTOR



Particulate Filters

Features:

- Can be used alone with filter holder and cover (N750037) or with any Honeywell North N-series cartridge (with N750036).
- Low profile with curved top will not catch on pipes or other objects.

Filtration Grade: P100

SKU	For Model
068-7580P100	5500, RU8500 and 7700 Half Masks; 5400, RU6500 and 7600 Full Facepieces

Cartridge Respirators



3M™ Full Facepiece Reusable Respirator



Features:

- Unique center adapter directs exhaled breath and moisture downward, and helps reduce debris from depositing in the valve.
- Smooth surface allows for quick and easy cleaning.
- Large lens provides a wide field of view and excellent visibility.
- 3M™ Cool Flow™ Valve provides cool, dry comfort.
- Lightweight well-balanced design and silicone face seal for enhanced comfort and durability.

Body Material: Silicone; Thermoplastic Elastomer

SKU	Size Group
142-6800	Medium
142-6900	Large

3M™ Half Facepiece Reusable Respirator



Features:

- Half facepiece drop down.
- Used with 2000, 6000 and 7000 Series filters and cartridges.
- Remarkably comfortable with soft, lightweight facepiece and the easy-to-adjust head straps.
- Reusable.
- Just dispose of the cartridges/filters when used to capacity.

Body Material: TPE

SKU	Size Group
142-6200	Medium
142-6300	Large



AUTHORIZED DISTRIBUTOR

7700 Series Half Mask Respirators



Features:

- Silicone facepiece conforms to facial features.
- Contoured sealing flange and cradle suspension system eliminates discomfort.
- Cradle suspension system allows the facepiece to seal evenly on the face without creating pressure points.

Body Material: Silicone

SKU	Size Group
068-770030M	Medium
068-770030L	Large

Disposable Respirators



3M™ Particulate Respirator 8210



Features:

- Two-strap design with single point attachment helps provide a secure fit.
- Adjustable noseclip reduces eyewear fogging and helps ensure a better fit and seal.
- Lightweight construction enhances worker comfort and wear time.
- Patented filter media with advanced electrostatically charged microfibers help make breathing easier and cooler for enhanced user comfort.

Size Group: One Size

Suspension: Two Fixed Straps

SKU	Usage	Includes
142-8210	Grinding; Sanding; Sweeping; Bagging; Other Dusty Operations	Adjustable Noseclip
142-8210V	Construction; General Manufacturing; Mining; Oil & Gas; Transportation	3M™ Cool Flow™ Valve; Adjustable Noseclip
142-8511	Grinding; Sanding; Sweeping; Bagging; Other Dusty or Arid Operations	3M™ Cool Flow™ Valve; M Noseclip

MOLDEX**2200 Series N95 Particulate Respirators****Features:**

- For humid and/or dusty work environments, this is a mask that fits the bill.
- Dura-Mesh® shell stands up to extreme heat environments while providing better protection to the filter.
- Contoured face seal and molded nose bridge deliver enhanced comfort, particularly during extended periods of wear.

Size Group: Medium/Large**Suspension:** 2-Strap

SKU
507-2200N95

2300 N95 2-Strap Particulate Respirators with Exhale Valve**Features:**

- Exhale valve lets workers breathe easy and stay cool.
- Dura-Mesh® shell resists collapsing in heat and humidity.
- Molded nose bridge seals easily without a metal noseband.
- Facepiece is naturally contoured for less pressure.
- Straps are securely attached so they don't break at the seal.
- Softspun® lining for increased comfort and durability.
- Soft foam nose cushion for added comfort.
- Available in three sizes to fit more workers and increase OSHA compliance.

Size Group: Medium/Large

SKU
507-2300N95

SAFETY STORAGE**Safety Can Parts & Accessories****Justrite****Funnel Attachments for Type I Steel Safety Cans****Features:**

- Economical way to aid pouring into smaller openings.
- Bolt-on funnel with galvanized hose.
- For Type I steel cans only.

Dia.: 0.5 in

SKU	Material
400-11202Y	Polyethylene

Safety Cans**Type I Safety Cans****Features:**

- Electric seam weld joins top and body.
- Stainless steel flame arrestor.
- Sturdy 16 gauge shock rim for bottom support.

Dia.: 12-1/2 in**Height:** 15-1/2 in**Material:** Galvanized Steel**Resistance:** Chemicals

SKU	Capacity Vol.
258-UI50FS	5 gal

Justrite**Type I Steel Safety Cans****Features:**

- Color coding avoids accidents.
- Self-closing lid controls spills.
- Leakproof, auto-venting lid prevents explosion.
- Available with funnel for cans 1 gal or larger.
- Cans up to 1 quart feature a trigger-release handle, while larger capacities have a swinging handle to greatly ease carrying of heavier loads.

Dia.: 11.75 in | **Height:** 16.875 in**Material:** 24-ga Galvanized Steel | **Capacity Vol.:** 5 gal

SKU	Type	Color	Includes
400-7150100	Gas	Red	Stainless Steel Flame Arrestor; Swinging Handle
400-7150110	Gas	Red	Poly Funnel; Stainless Steel Flame Arrestor; Swinging Handle
400-7150200	Diesel	Yellow	Stainless Steel Flame Arrestor; Swinging Handle

Type II AccuFlow™ Safety Cans**Features:**

- Color coding avoids accidents.
- Stainless steel flame arrestor prevents flashback ignition.
- Easy-to-use Safe-Squeeze® trigger for controlled pouring.
- Two-openings, one for targeted pouring, one with ergonomically designed lift-lever for easy filling.

Dia.: 11.75 in**Height:** 17.5 in | **Hose O.D.:** 1 in**Capacity Vol.:** 5 gal

SKU	Color
400-7250130	Red
400-7250230	Yellow

TRAFFIC SAFETY

Safety Tapes



Economy Barrier Tape

Features:

- Sturdy safety tape.
- Repeat wording clearly identifies hazard.
- Bright colors and Bolder Print to attract attention.
- Durable, yet easily disposable.

Width: 3 in

Length: 1000 ft

Material: Polyethylene



SKU	Depicted Text	Color
101-R10003	Danger	Red
101-Y10003	Caution	Yellow



Safety Barricade Tapes

Features:

- Safety tapes indicating warning or danger areas.
- Large bold lettering is easy to read at a distance.
- Durable plastic material remains pliant in cold weather.

Width: 3 in

Length: 1,000 ft



SKU	Depicted Text	Color	Thickness
272-71-1001	Caution	Yellow	2 mil
272-77-1001	Caution	Yellow	2 mil
272-77-1004	Danger	Red	4 mil

FILLER METALS

Welding Stick Electrodes



Mild Steel Electrodes

Features:

- Excellent arc starting and stability.
- For best performance, store in rod oven at recommended temperature.

Material: Carbon Steel

Length: 14 in



SKU
900-7018-18X50

GAS CUTTING & WELDING

Outfits



G-150-J-CPT Totes with Tanks

Features:

- Designed with a patented and molded plastic carrying case.
- Ergonomic handle.
- Patented balance design with small footprint.
- Built-in storage compartments.



SKU	Gas Type
341-0384-0948	Acetylene

Regulators & Flowmeters



VN Series HVAC Nitrogen-Purging Regulators/Flowmeters

Features:

- Hybrid design—regulator and flowmeter all in one.
- Easy-to-read nitrogen cylinder content gauge with preset flow rates.
- Heavy-duty brass body designed for rugged field use.
- No adaptors needed.

Gas Type: Nitrogen

Operating Pressure: - 500 psi Test; 3000 psi

Connection Type: CGA-580

Outlet Size: 1/4 in

Outlet Type: Male SAE Flare



SKU
312-VN-500

Tips & Nozzles



Victor® Style 1-Pc Acetylene Cutting Tips - 1-101 Series

Features:

- One-piece tip for acetylene-oxygen.
- Medium preheat for general hand and machine cutting.
- Fits 2460, CA 1060, ST, SST, 1400C machine torches.

Orifice: 0.060 in

Material: Copper

Gas Type: Acetylene; Oxygen

Process: General Hand or Machine Cutting

Used With: 2460; CA 1060; ST; SST; 1400C

Head Type: Cutting torch



SKU	Type	Tip Size Symbol
900-1-101-2	1-Pc Cutting Tip	2

SOLDERING & BRAZING

Soldering/Brazing Torches



High Heat Torch

Features:

- Work faster and more efficiently with maximum heat.
- Ideal for job site projects including large soldering, brazing, heat treating and light welding.
- Large, optimized swirl flame provides maximum heat output.
- Cast aluminum body for durability.
- Pressure regulated for consistent performance when tilted or momentarily inverted.
- Run-lock button keeps the torch lit for continuous use.

Process: Brazing; Heat Treating; Large Diameter Soldering

Includes: High Heat Torch



SKU	Gas Type	Body Material
189-361524	MAPP® (Methyl Acetylene-Propadiene)	Cast Aluminum

TORCH & WEED BURNERS



Hotspotter All Purpose Propane Torches

Features:

- Flame tools are for exterior maintenance and repair.
- Hotspotter is an all-purpose propane torch that delivers at full cylinder pressure with no smoke and no fumes.
- Ergonomic handle with adjustable trigger.
- Hooks up to standard 20-pound propane tank.

Gas Type: Propane

Handle Length: 31 in

Hose Length: 10 ft

Output Power: 500000 Btu



SKU	Type	Includes
312-WB-101	Heavy-Duty Open Flame Torch	Brass Propane Tank Adaptor; Brass Flow Control Shut-Off Valve; Spark Ignitor; Cast Iron and Steel Nozzle; Hose
312-WB-102	Medium-Duty Open Flame Torch	Brass Propane Tank Adaptor; Brass Flow Control Shut-Off Valve; Spark Ignitor; Welded Tube Nozzle; Hose

WELDING & CUTTING ACCESSORIES

Anti-Spatter & Chemicals



Anti-Spatters

Features:

- Helps protect MIG gun nozzles, contact tips, accessories and all welding zones during single- and multi-pass welding.
- Non-flammable.
- Reduces spatter build-up on MIG nozzles, prevents spatter adhesion.
- Heat-resistant to withstand high temperature use.
- Paint compatible.
- Contains no silicones, no fluorocarbons.

Chemical Compound: Solvent-Based



SKU	Capacity Vol.
905-620-160Z	16 oz

Centering Heads

CURV-O-MARK®

Centering Heads

Features:

- Aids in setting of center lines, establishing angles and marks for butt-ins, location points inside pipes and tanks, laying out keyways, and measuring declivity.
- The Y-type head is fitted with an adjustable dial bubble protractor (DSL).
- Use a tapping hammer to operate the hardened centering pin.



Head Type: Y-Type

Type: #6 Standard Centering Head; DSL

SKU	Pipe Cap.	Head Width
430-14775	1/2 in - 4 in	4 in



Magnetic Centering Heads with Vial

Features:

- One piece Y-shaped body design with magnetic legs.
- Built-in dial with 2-1/2° increments that turns 360°.
- Hardened center punch marks set position by taping with a hammer.
- Used to establish and mark a centerline at any angle around circumference on a pipe or tank or as a protractor level.
- Excessive heat can damage magnets.
- Keep magnets away from sensitive electronic devices.



SKU	Pipe Cap.	Size
496-53025-M	1 in - Larger	Small
496-53076-M	6 in - Larger	Medium

Cutting & Burning Guides

CURV-O-MARK®

Wrap-A-Round® Rulers

Features:

- Feature metric scale and pitch chart.
- Resists heat and cold.

Width: 3.88 in



SKU	Size Group	Length	Pipe Capacity
430-14752	Medium	4 ft	3 in - 6 in
430-14753	Large	6 ft	3 in - 10 in



Wizard Wraps

Features:

- Wizard wrap, made from a non-asbestos, heat resistant material, has a nice thick edge for easier more accurate marking and helps keep your soapstone from slipping.
- 36" tape measure printed on the medium & large Wizard-limits the need for an extra tape measure.
- Circumference & Quartering scale printed on every wrap-limits the need for calculation.
- Packaged in a durable, reusable container that will hold up in your tool box.

SKU	Size Group	Width	Length	Resistance	Pipe Capacity
496-WW-16	Small	2-5/8 in	30 in	Gasoline; Heat; Kerosene; Oil; Sea Water; Water	1 in - 6 in
496-WW-17	Medium	3-7/8 in	60 in	Gasoline; Heat; Kerosene; Oil; Sea Water; Water	2 in - 16 in
496-WW-17A	Large	5-1/4 in	120 in	Heat	6 in - 30 in
496-WW-19	Extra Large	7 in	180 in	Gasoline; Heat; Kerosene; Oil; Sea Water; Water	12 in - 48 in

Cylinder & Caps



MAP-Pro™ Hand Torch Cylinders

Features:

- Ideal for medium to heavy soldering and brazing.
- Flame temperature in air is 3600 degrees F.

Wt.: 1.9 lb



SKU	Gas Type
870-332477	MAP-Pro™



WORTHINGTON
CYLINDERS
A Worthington Industries Company

TX 9 Propane Cylinders

Features:

- Ideal for general soldering.
- Flame temperature in air is 3450 degrees F.

Capacity Vol.: 14.1 oz

Wt.: 1.9 lb



SKU

870-304182

Rod Holders



Rod Storage Tubes

Features:

- Easy way to store and organize all of your filler metals properly.
- 1/8-inch nominal wall thickness for superior strength and durability.
- Neoprene seal keeps your rods air and water tight.
- Each rod storage tube comes with a key tag to identify the contents.
- Made of high impact polyethylene.
- Available in a variety of lengths and colors.
- Increase tube to accommodate 1-meter rods with 3-inch extension (BW36-BLA-EXT) sold separately.



SKU

900-BW14-BLU

Capacity Wt.

10 lb

Spark Lighter & Flints

SL-E Spark Lighters

Features:

- Single flint lighter.
- Consistent, reliable sparking.
- Long lasting.



SKU

900-SL-E

SHURLITE

Flints

Features:

- Economically priced and designed for any of the Shurlite® family of flint lighters.
- Guaranteed to fit perfectly on Shurlite® lighters.
- Guaranteed to remain seated in the flint holder.
- Larger size for longer life.



SKU

322-3011X

Shurlite® Spark Lighters

Features:

- Strong frame and rugged design.
- Options available for flat file with round cup design, single-flint round, triple-flint, and Shoot-a-lite flat pistol shaped spark lighters.



SKU

322-3001

Type

Universal Single-Flint Round File Spark Lighter; Flint Easily Replaced; Round File Spins; Square Hood

322-4501

Three-Flint Spark Lighter; Heavy-Duty Steel Band; Strong Frame

Tip Cleaners

WYPO

Tip Cleaner Sets

Features:

- Uniform ridges wipe and polish the orifice wall.
- Tapered ends allows smooth easy entry without scratching.
- Attractive aluminum case with a contained spool assembly.
- Smooth leader pilot.
- Tangle-free closed loops.

Dia.: 0.014 in; 0.018 in; 0.021 in; 0.024 in; 0.028 in; 0.032 in; 0.035 in; 0.037 in; 0.039 in; 0.042 in; 0.048 in; 0.055 in; 0.062 in

Size Group: 6 to 26

Used With: Welding Tips



SKU

326-STANDARD

Material

Stainless Steel

Includes

(13) Cleaners; Case; File

Welding Cables & Power Cables



Welding Cables

Features:

- Custom lengths available.
- Custom assemblies available.
- Resistant to oil, chemicals, and solvents.

Amps: Consult Ampacity Chart

Temp Range: -50° C (-58° F) - 105° C (221° F)

Jacket Material: EPDM

Number of Conductors: 1

Insulation Thickness: 0.08 in

Voltage: 600 V

Insulation: EPDM

Conductor Material: Stranded Copper



SKU	Cable/Wire Description
911-1/0-500	1/0 AWG x 500 ft
911-2/0-500	2/0 AWG x 500 ft

Welding Hoses

Grade R Twin-Line Welding Hoses

Features:

- High quality Grade R twin-line welding hoses.
- Green hose carries oxygen to welding equipment.
- Red hose carries acetylene.
- Hose cover resists oils.

Pressure: 200 psi

Hose I.D.: 1/4 in

Gas Type: Acetylene Only



SKU	Length
907-LB504	50 ft
907-LB1004	100 ft

SPECIAL ORDERS

Don't see it here? Just ask.





BOSCO
BROS., L.L.C. NORCO, LA